

## Two More Royal LePage Advantages

President's Gold Winner Again!



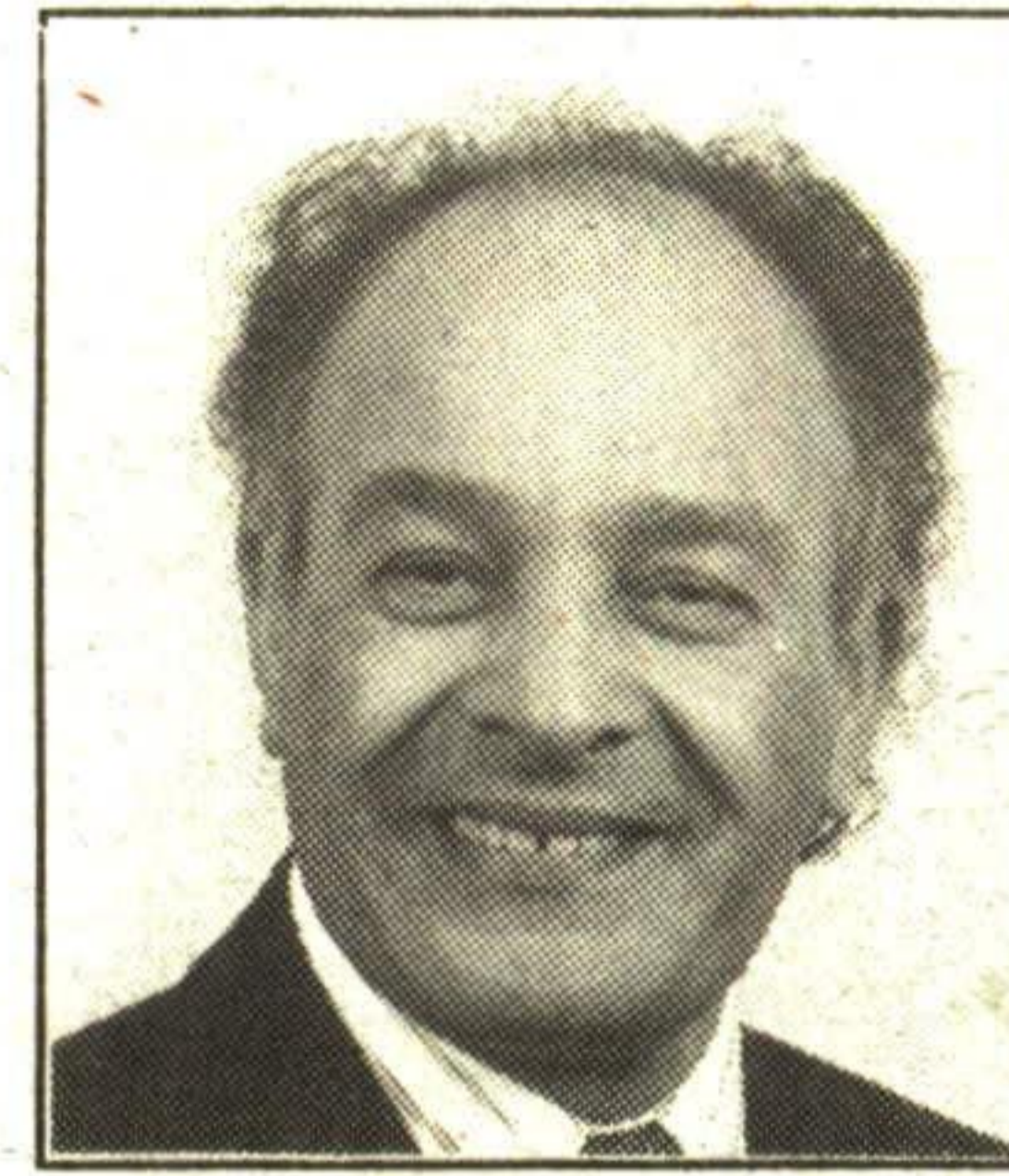
MARY MAAN\*  
\*Sales Representative

Besides Home Match, InfoHome, and the only Broker in town to be a Member of Toronto Real Estate Board as well as Brampton Board.

**EXPOSING YOUR PROPERTY  
TO OVER 24,000 AGENTS**

Interested in Real Estate? Buying, Selling, or Just Curious?  
Talk to MARY or TONY MAAN

Res. 873-7207 **877-0173** Tor. 874-3068



TONY MAAN\*  
\*Sales Representative

INDEPENDENT FREE PRESS

A PRIME  
LOCATION  
FOR HOMES



Where is the  
best place to  
look for a  
new home?

Our Real Estate  
Digest.

You'll find a  
wide variety of  
styles, locations  
and prices.

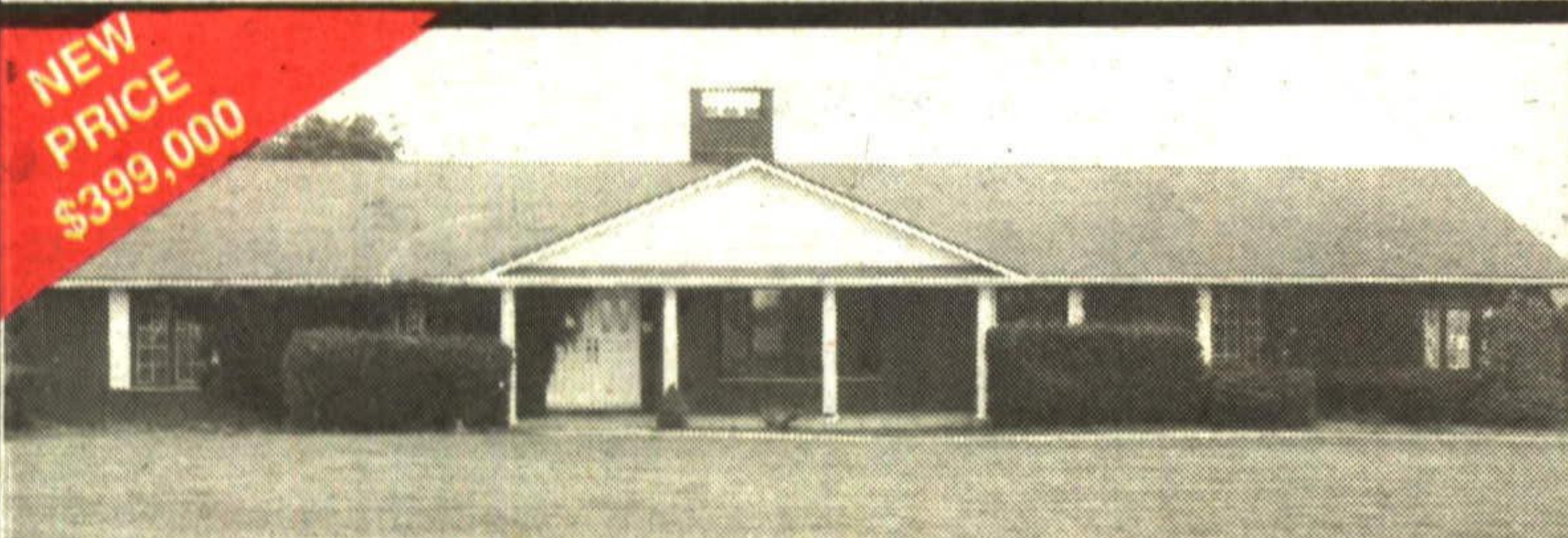
Locate your new  
home now - read  
our Real Estate  
Digest.

3.4 ACRES  
OVERLOOKING LAKE

New energy efficient home overlooking an 8 acre lake. This property is very private with many tall hardwood trees. This upgraded home is loaded with the very best of everything, excellent construction and materials throughout, walking distance to Hillsburgh, commuting distance to Toronto. Listed at an asking price of \$275,000. This is truly one of the best buys in the country. Call

LOUIS & CATHY ROMANELLI  
Sales Representatives  
456-1000

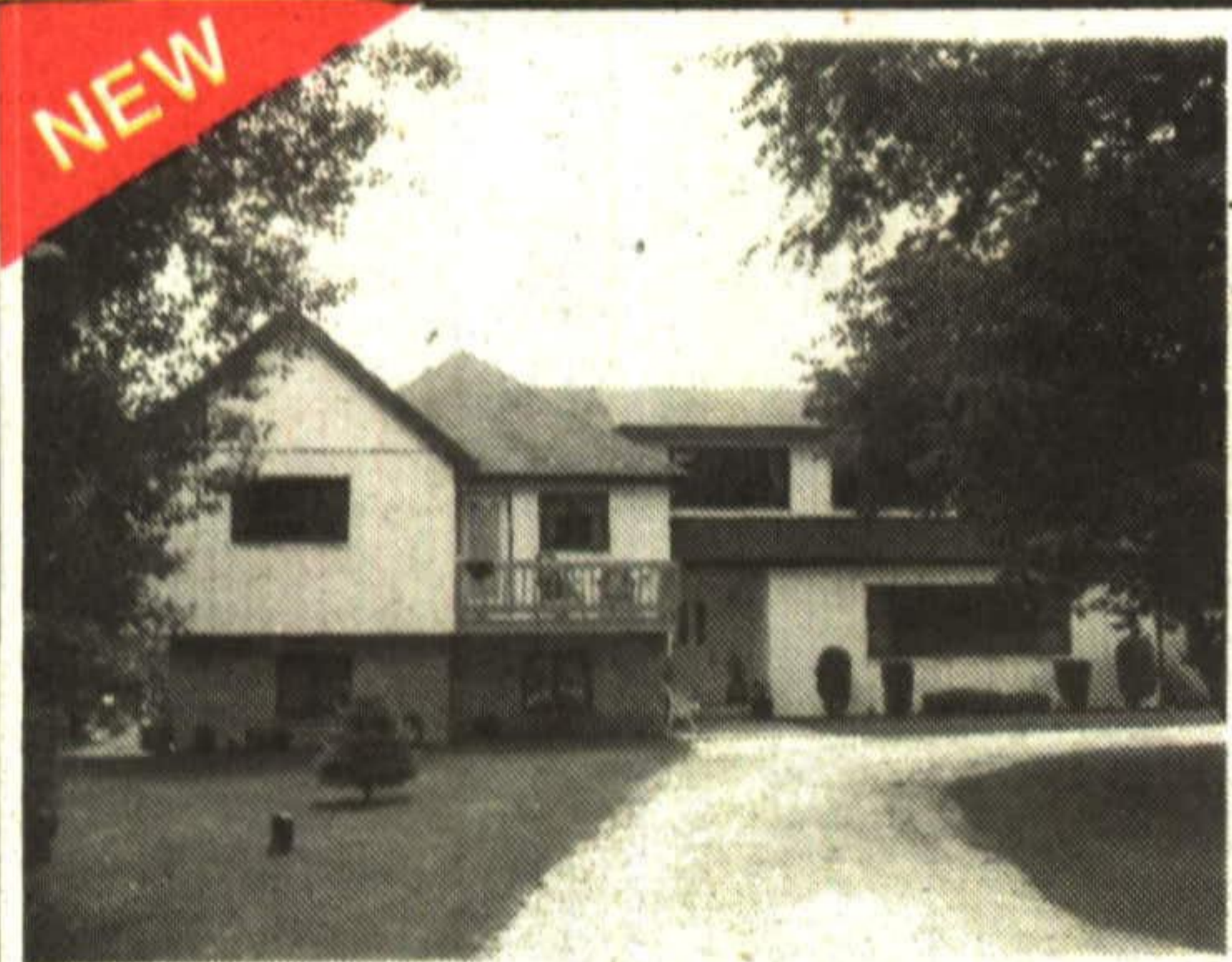
RE/MAX BRAMPTON  
INC. RLTR.



**LUXURIOUS COUNTRY BUNGALOW WITH EXCEPTIONAL 3100 SQUARE FOOT WORKSHOP**  
• 5.4 rolling acres with fabulous views in all directions • Property professionally landscaped and fully fenced • Tennis Court • Well over 5,000 sq. ft. on two gracious levels • 4 bedrooms, 4 bathrooms, 2 fireplaces • Central air • Intercom system throughout • 200 amp service • included are dishwasher, fridge, stove, garbage compactor, washer, dryer and water softener • Workshop has pine-lined office, 2 pc washroom, 220 amp service - a must to view!! Mary Maan\* 31-72



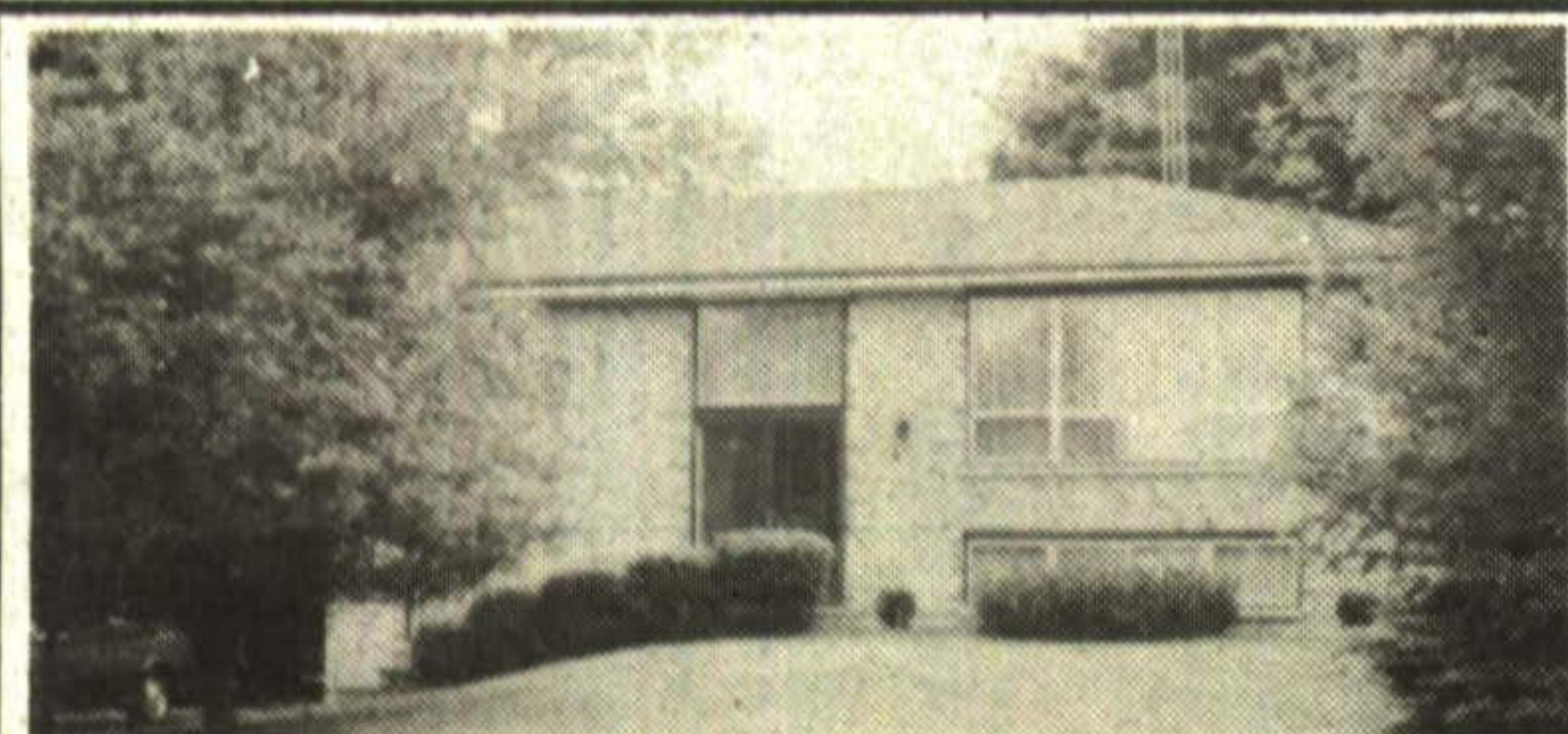
**\$269,900 - GEORGETOWN COUNTRY**  
Just under an acre, minutes from 401 on Eighth Line. Great spacious family home, inground fenced pool, huge party room. Mary Maan\* 31-78



**\$399,000 - ERIN**  
Secluded, custom built executive 3000 sq. ft. home on 2.3 rolling acres. Circular driveway, great room with large bow windows, fireplaces & cathedral ceiling, master bedroom with ensuite & private den, upgrades galore. Mary Maan\* 31-77



**\$195,000 - ERIN**  
Newer home, upgrades galore, landscaped, 18 x 20 deck, fenced yard, master bedroom ensuite, fireplace in living room. Have to see it to appreciate the value. Mary Maan\* 31-70



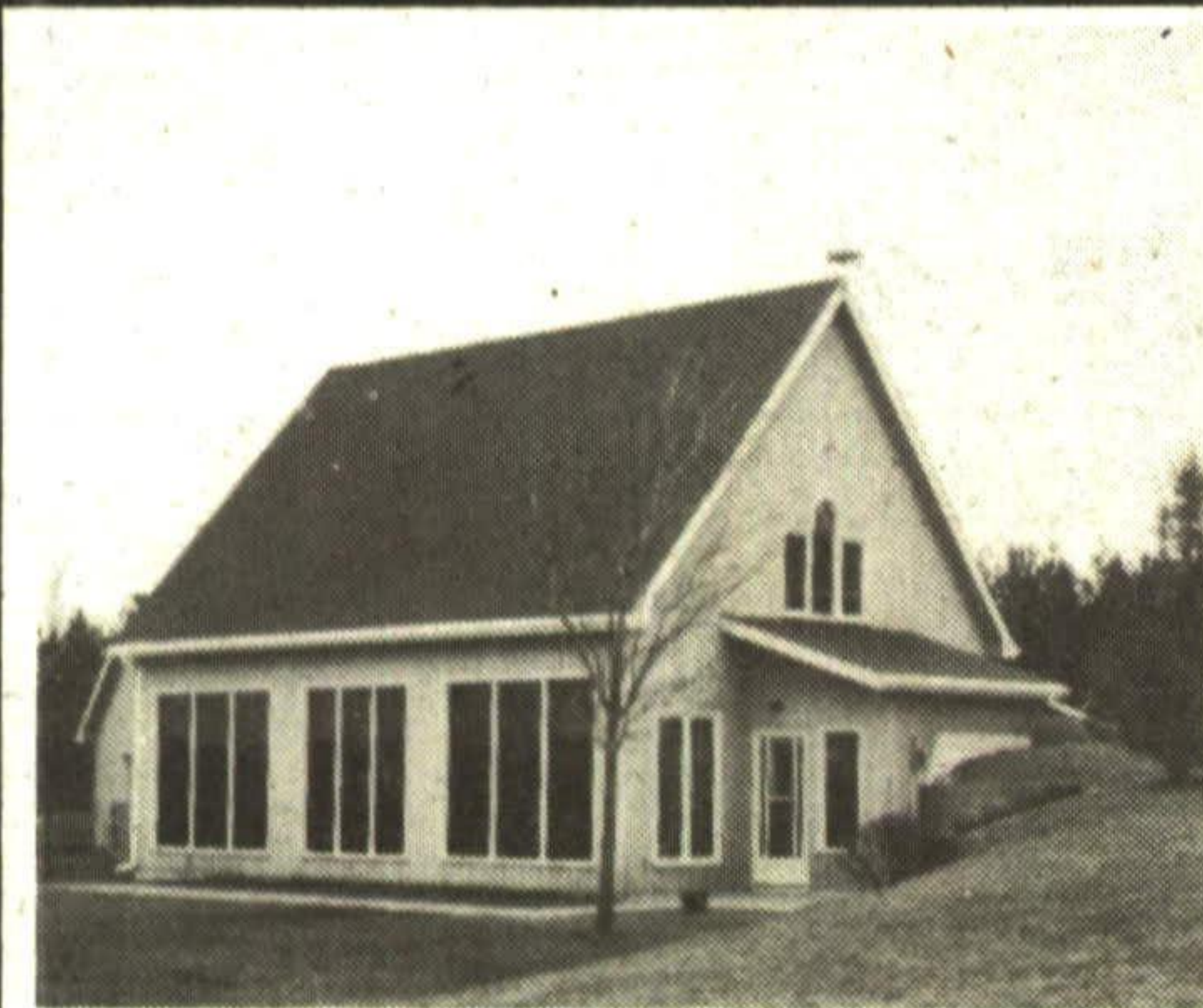
**\$199,000 - BALLINAFAD**  
Country setting, bungalow set well back on a large lot with mature trees. 4 bedrooms, finished rec room, rugs laid over beautiful hardwood floors to protect from the dog. Mary Maan\* 31-74



**\$225,000 - GEORGETOWN**  
5 acres, minutes from town, spacious bungalow, needs T.L.C. Priced to sell. So close to town. Mary Maan\* 31-71



**\$69,000 - ERIN**  
Lovely 3 bedroom mobile home on 88' x 145' lot. Cul-de-sac location in Stanley Park. Think about the low mortgage. Mary Maan\* 31-75



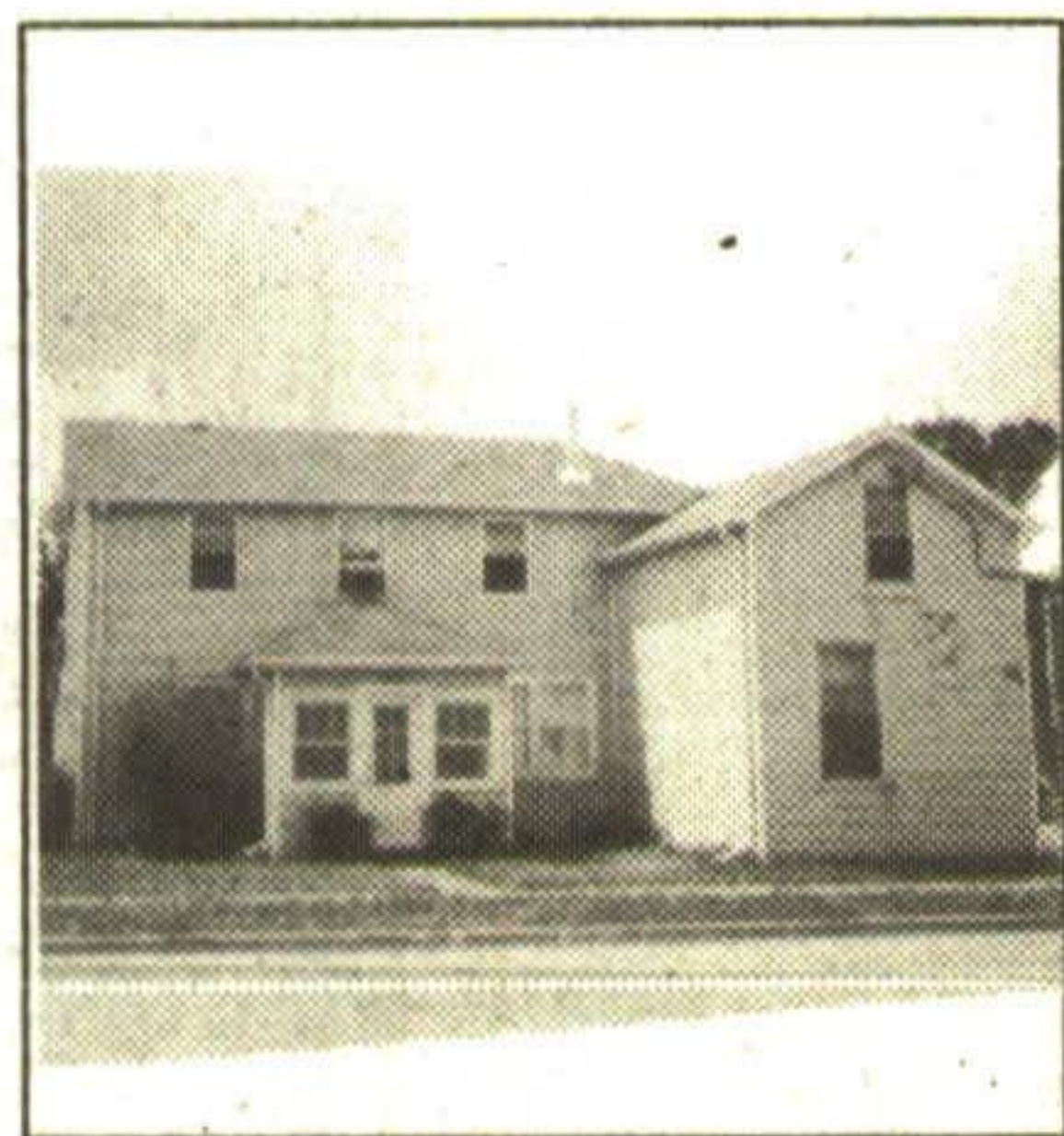
**\$195,000 HILLSBURGH**  
Home for 2 only, could be lovers, professionals or retirees. Straight out of the pages of homes and gardens. Set on 2 picture perfect acres, unique open concept property. Tony Maan\* 30-3



## NEW IN ACTON



2 bdrm apt. + commercial space  
Tony Maan\* C1 Zoning



3 bdrm house semi detached 2 bdrm house semi detached  
Tony Maan\* C1-H Zoning



4 bdrm detached house  
Tony Maan\* C1-H Zoning



\$550,000 TO BE SOLD AS ONE PARCEL  
3 Investment Properties (Commercial) C1-H Zoning. Right next to IGA Plaza



## \$395,000 - HALTON HILLS

Excellent corner 1 1/4 acre property. Family run profitable fruit market, potential for tremendous increase in sales due to residential development all around. Busy Hwy. 7 & 22nd Sideroad. Take your future into your own hands. Up to 50% financing could be arranged for suitable person. Tony Maan\* 30-2