



Doug & Dianne Penrice
*Sales Representatives

Your
Hometown
Real Estate
Professionals

HOMES TO FIT EVERYONE'S POCKET BOOK!!

ALL THIS FOR \$159,000!!



- 3 Bedroom Bungalow
- Tastefully decorated
- Large eat-in kitchen

- Raise your family here
- Close to Downtown
- Quiet neighbourhood
- Move-in condition
- A 10++



UNIQUE LIVING!!!!

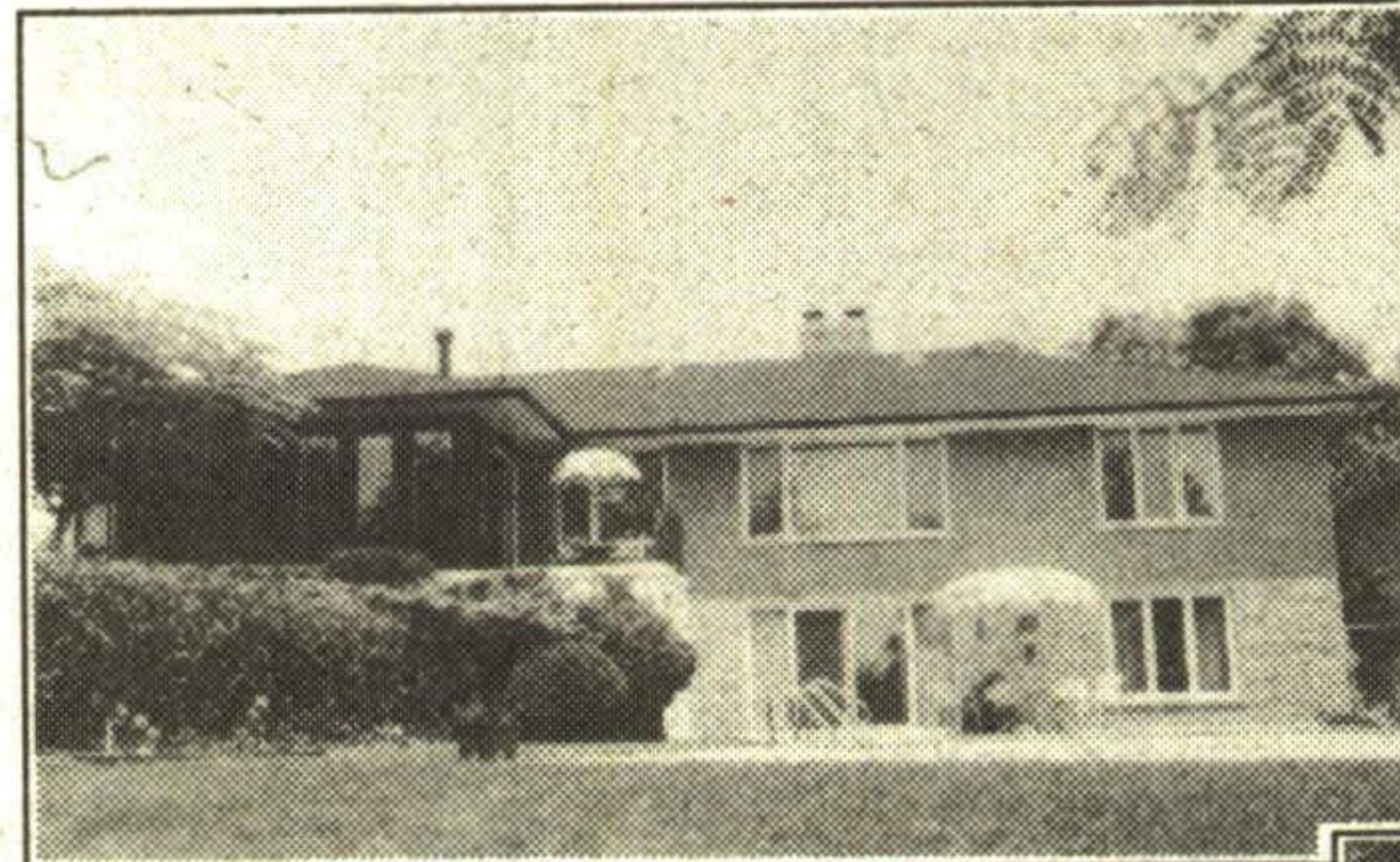


GORGEOUS
SUNKEN
LIVING ROOM

EXECUTIVE
RANCH
BUNGALOW

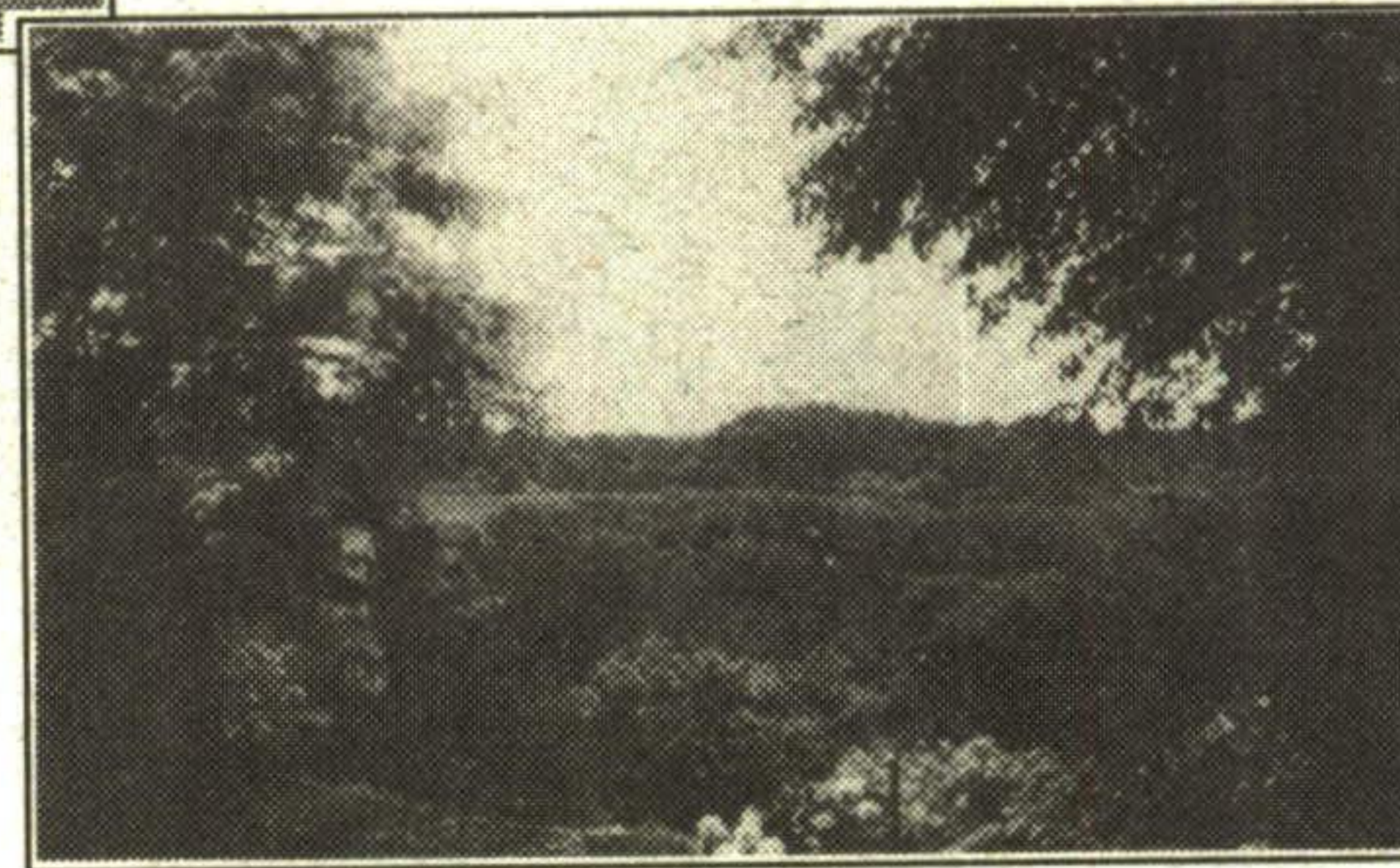


FANTASTIC
BACKYARD
WITH
MARBLEIZED POOL



HERE'S A VIEW
ANYONE
WOULD LOVE

BY APPOINTMENT ONLY!



CW93-098

YOU'LL LOVE IT!!

Lovely, private setting,
no one behind you.
Mulberry Model. Quiet
cul-de-sac. Asking
\$139,900.

CW93-088



★ NEW HOMES UNDER CONSTRUCTION ★

★ PICK YOUR COLOURS ★

★ ON THE RAVINE ★



EDEN 300 - 2659 sq. ft.
Loaded with Extras
ASKING \$269,900



EDEN 200 - 2680 sq. ft.
Clay Brick, Air Conditioning, Ceramics
ASKING \$266,900

Call Doug* or Dianne* Penrice
Countrywide All-Pro Realty Inc.

328 Guelph St., Georgetown

JOIN OUR GROWING LIST OF SOLDS

873-3377

Countrywide
Independent
Member
Broker



WOULDN'T
YOUR HOME
LOOK
GOOD
HERE?