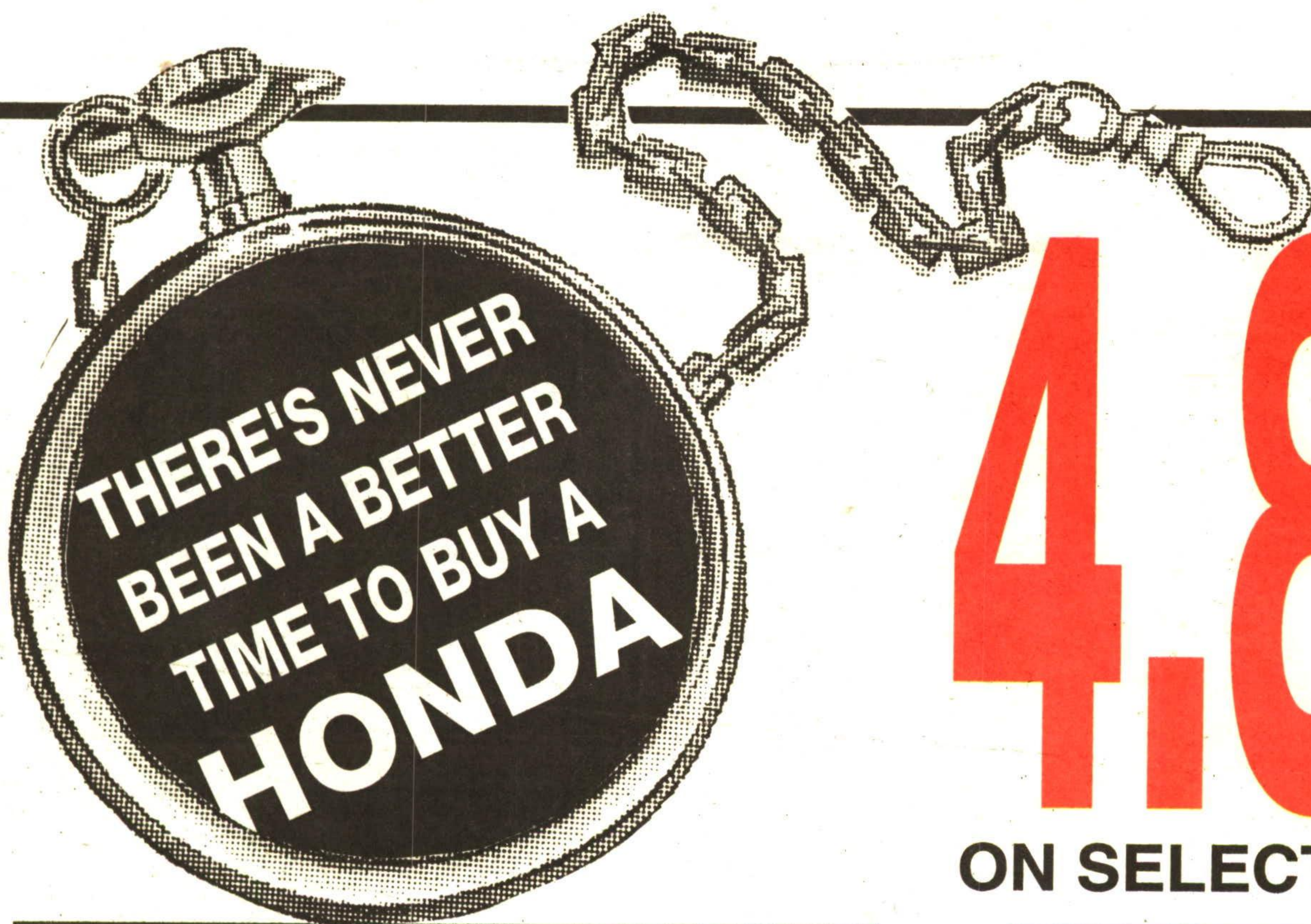


GEORGETOWN HONDA



4.8%

FINANCING
NO
LIMIT

ON SELECTED MODELS

1993 CIVIC CX HATCHBACK

ONLY
\$9,888*



\$179⁰⁰**
per month

5 speed

1993 CIVIC DX HATCHBACK

ONLY
\$11,488*



\$209⁰⁰**
per month

5 speed

1993 CIVIC LX SEDAN

ONLY
\$11,488*



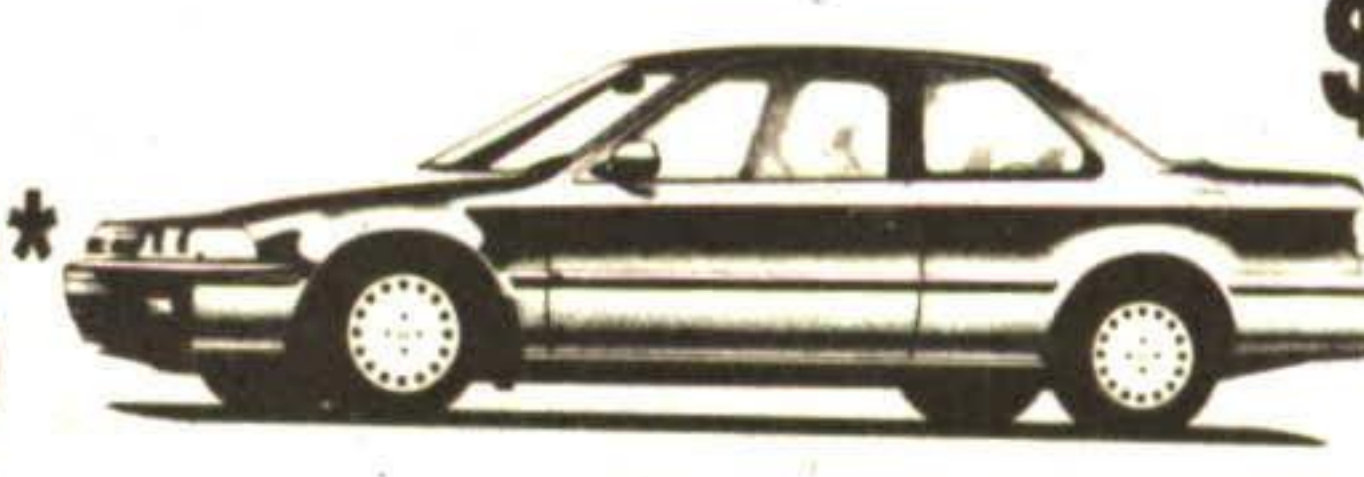
\$217⁰⁰**
per month

5 speed

PLUS 4.8%***

1993 ACCORD LX COUPE

ONLY
\$15,266*



\$248⁰⁰**
per month

5 speed

PLUS 4.8%***

1993 ACCORD LX SEDAN

ONLY
\$16,266*



\$259⁰⁰**
per month

5 speed

PLUS 4.8%***

1993 PRELUDE SR-V 190 H.P.

ONLY
\$24,488*



\$444⁰⁰**
per month

PLUS 4.8%***

BRAND NEW 1992



PLUS 4.8%***

1992 PRELUDE S inc. Spoiler

\$16,985*

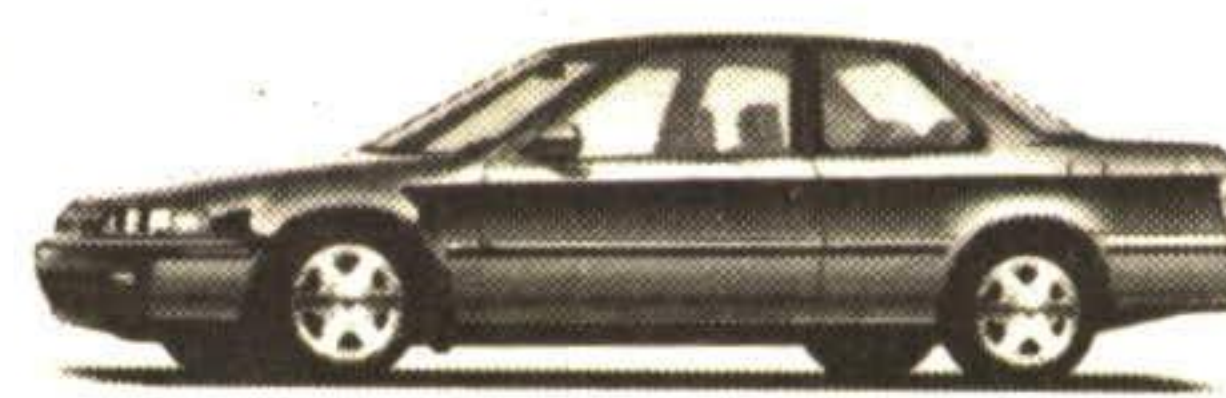
1992 PRELUDE SR inc. Spoiler

\$21,566*



1992 ACCORD EX WAGON

Auto **\$18,944***



1992 ACCORD EX-R COUPE

Auto **\$18,960***

'93 DEMO CLEARANCE

1992 ACCORD EX SEDAN

Auto

\$17,851* PLUS 4.8%***

No Freight or PDI

1992 ACCORD SE SEDAN

Auto, leather, heated seats, electric heated mirrors, Bose sound system, rear spoiler.

Bug deflector and sun visor.

\$24,976*

No Freight or PDI

ALSO . . . A GREAT SELECTION OF FULLY RECONDITIONED CIVIC & ACCORDS

* Plus Freight & PDI & Taxes.
** O.A.C. based on 48 month lease. \$1,000.00 down plus 1st Security and Taxes.
*** O.A.C. 4.8% No Limit 48 Month Term.



GEORGETOWN HONDA

203 GUELPH ST. (HWY. 7) GEORGETOWN

873-1818