

CONNECT



JOHNSTON & DANIEL

JOHNSTON & DANIEL LIMITED REALTOR

The Right Connection

CONNECTED



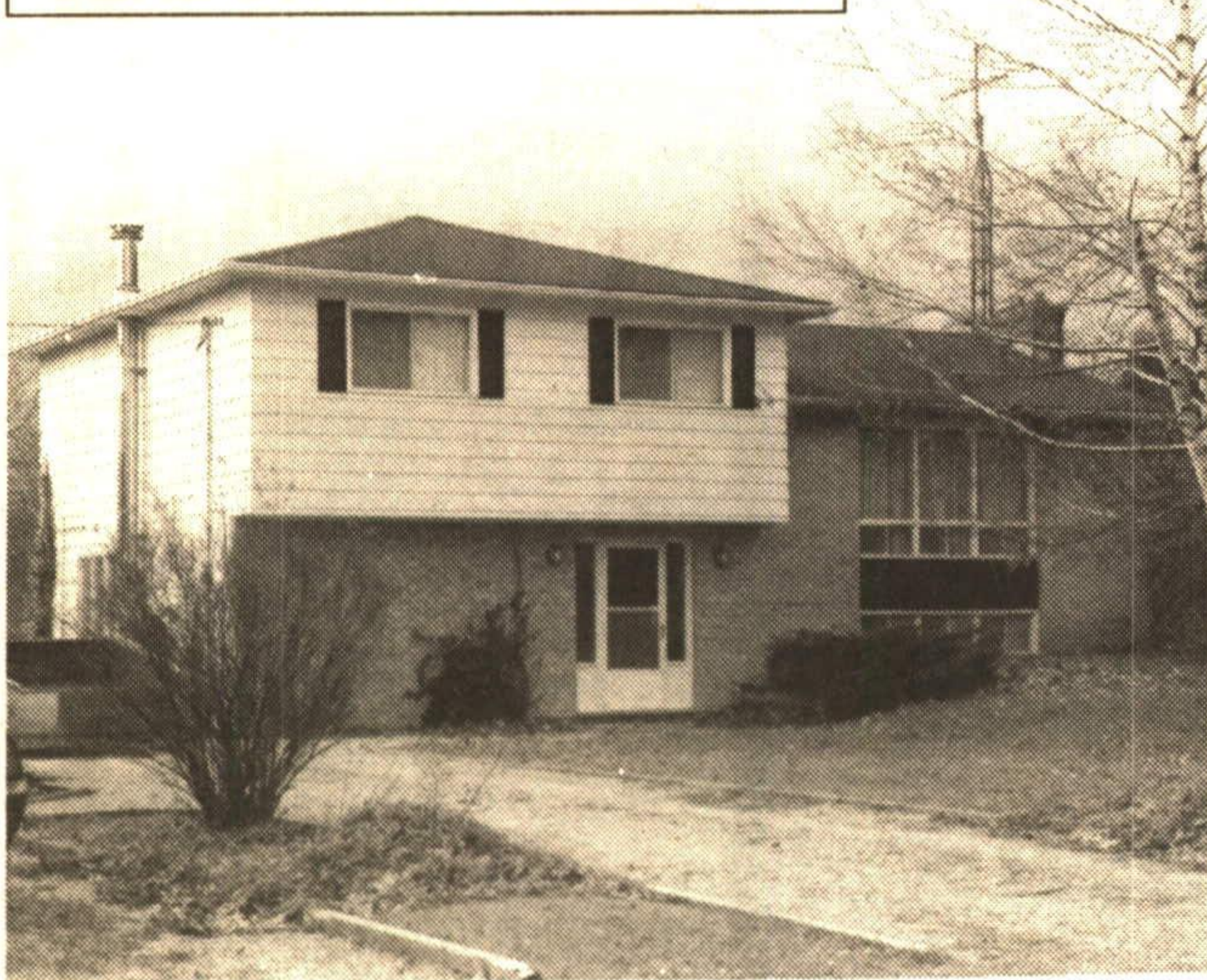
OPEN HOUSE - CALEDON

Starting out or retiring? Here are two houses side by side that could be right for you. One is a 3 bedroom bungalow and the other a 2-storey. Both overlook the Credit River in charming Cheltenham. One \$164,900 and the other \$179,000. Directions: Creditview Road North of King Street, to Kennedy Road in Cheltenham, then left on Credit Road to signs.

CALL CANDIS ROUSSOS 846-2270

14396 CREDITVIEW ROAD, CHELTENHAM, ONTARIO L0P 1C0 TELEPHONE (416) 838-3830 (CALEDON) (416) 846-2270 (TORONTO LINE)

VENDOR WANTS SOLD!



3/4 ACRE CLOSE TO BRUCE TRAIL

Bright and sunny 3 bedroom, main floor family room with Franklin fireplace. Large 2 car garage or workshop. Large assumable mortgage at 7.37%. Don't wait!

CW92-159

Call Ursula Zeidler
Sales Representative
Countrywide
All-Pro Realty Inc.
873-3377



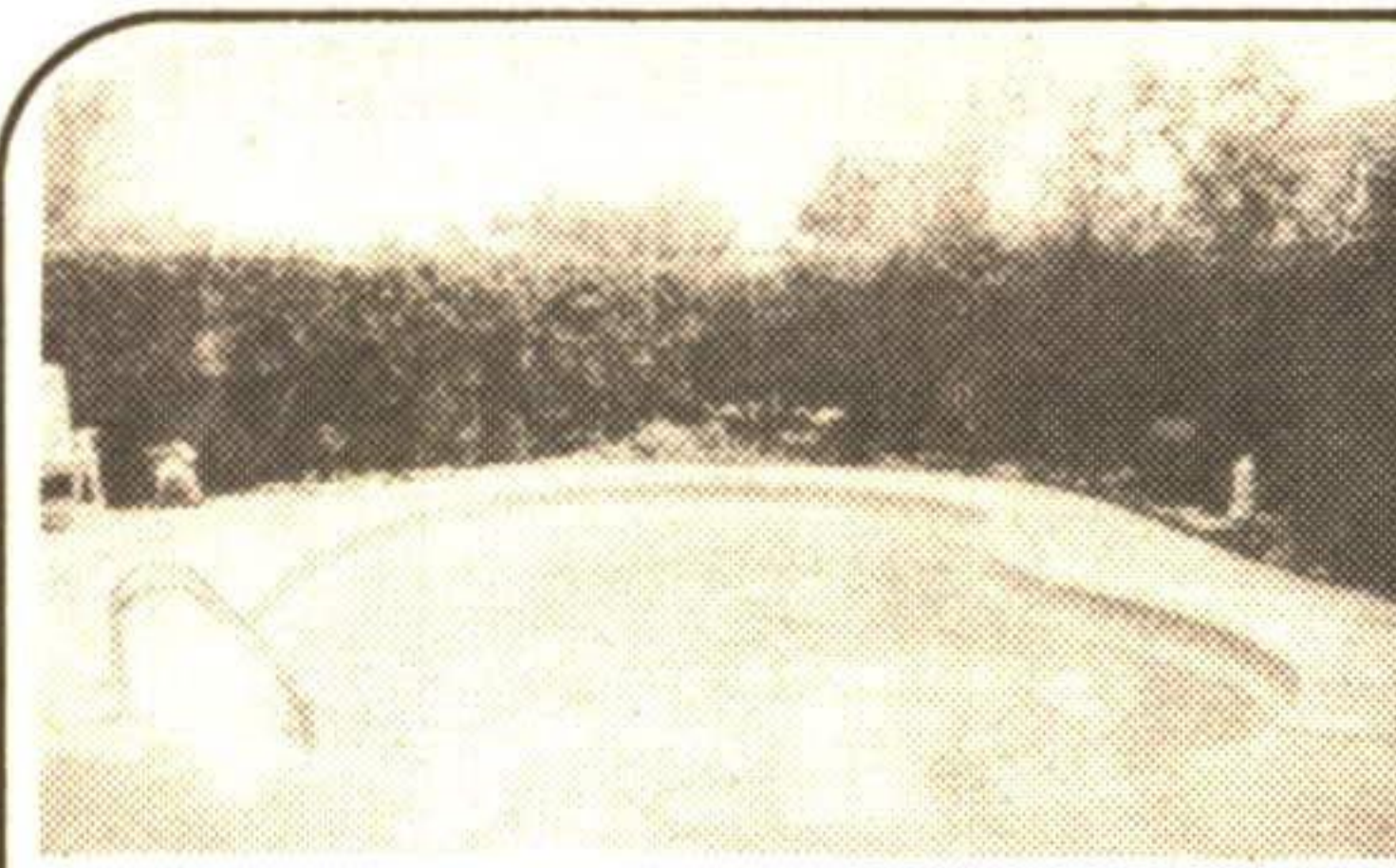
Kathy Ellis

*Sales Representative

Helping You Find Your Dream Home

873-0300

Tor. 874-3048



LAKEVIEW GEM \$164,900

The best value in Lakeview: This charming sidesplit offers upgraded kitchen, bathrooms, hardwood floors, new vinyl floors in kitchen, 3 bedrooms, 2 bathrooms and family room. The backyard offers a fabulous pool (recently renovated) patio & privacy. Priced Right - \$164,900. 0031



NEW



SPECTACULAR COUNTRY RETREAT

This lovely 3200 sq. ft. bungalow sits on 20 acres of wonderful rugged escarpment land. The home has lovely large principal rooms, four bedrooms, 3 bathrooms, two fireplaces and large picture windows overlooking the property & ponds. \$439,000. 0054



HAVEN'T YOU ALWAYS...!

wanted to live in the country but thought you couldn't afford it? This nicely decorated home offers: lovely views, a beautiful large pine kitchen, walkout to deck, and privacy, an extra large living room and everything you need on one floor (including laundry room). The garage workshop is heated and insulated. Priced only \$186,900. 0051

NEW



EMERALD LAKE IN TERRA COTTA

Sell your cottage and come live all year round on Emerald Lake. This lovely 2400 sq. ft. home is situated to maximize views of your very own 2 acre lake. The home has 3 bedrooms, beautiful stone fireplace in family room, jacuzzi, a stone feature wall, French doors from master bedroom to deck, Jennair in kitchen, office above garage and views everywhere. The property is fantastic, 11 acres of lakes, waterfalls, Rogers Creek, forest and meadow, only 10 minutes from Georgetown. \$519,000. 0067



PRIME LOCATION

22,000 sq. ft. of Industrial Space with office on Mountainview. Excellent location. This warehouse is heated, insulated and sprinklered with 4 bay doors. The office is air conditioned and has five separate offices. Vendor wants SOLD. \$675,000. 0056

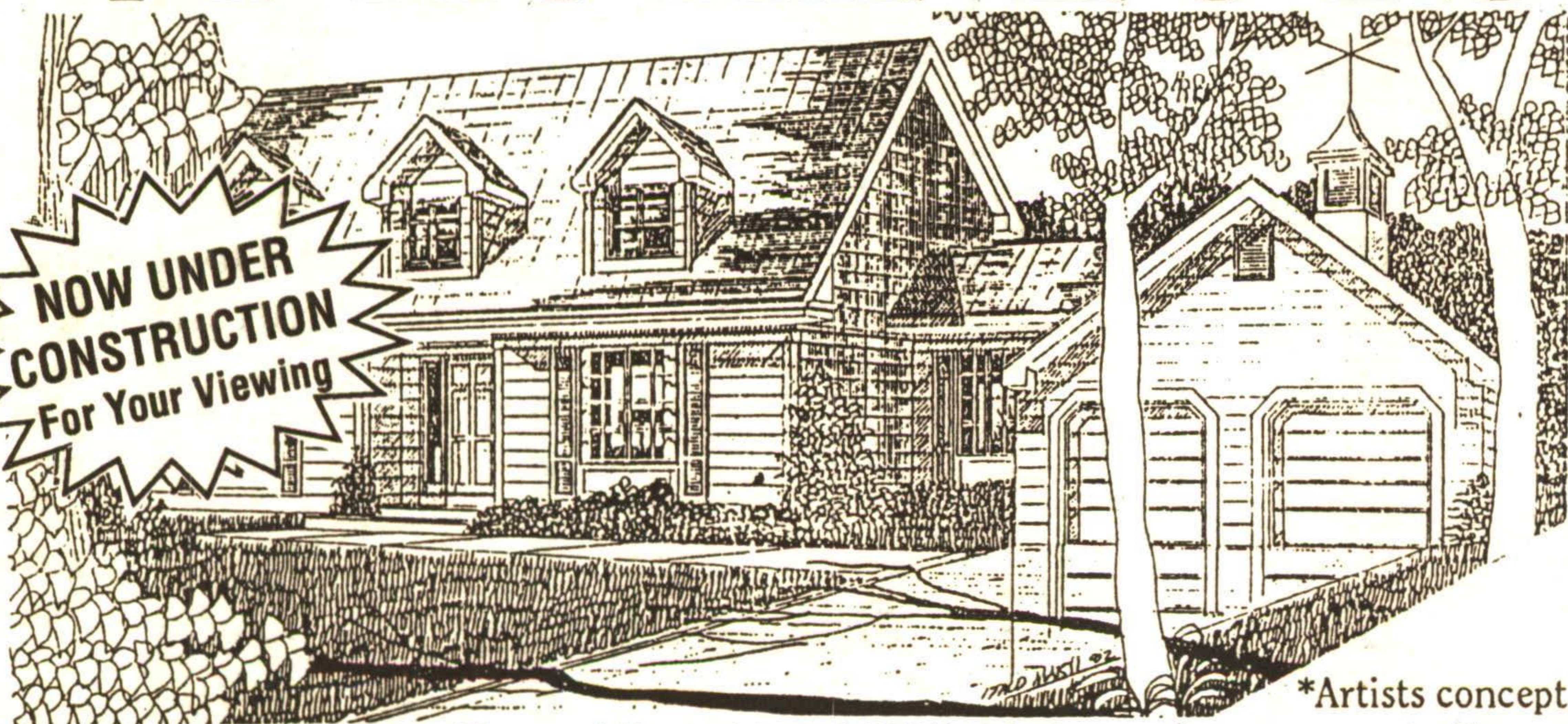


WHAT MORE COULD YOU WANT?

This spectacular Tudor style bungalow has it all. 3,000 sq. ft. of beautifully appointed living space on main floor, an additional 1500 sq. ft. downstairs with walkout (could be a nanny suite). There are six bedrooms, 5 bathrooms, spectacular large principal rooms and the property is delightful. \$439,000. 9971

Quiet village life as it used to be, on

1/2 ACRE LOTS



NOW UNDER CONSTRUCTION
For Your Viewing

*Artists concept
As Shown
from \$179,000.

Features:

- * Some backing onto conservation
- * Early Occupancy
- * Double Car Garage
- * Central Air

From

\$149,900

(All Prices Include G.S.T.)

ATHENWOOD IN ORTON MEADOWS

Only 17 Lots Left

Sales Office

1-519-855-6181

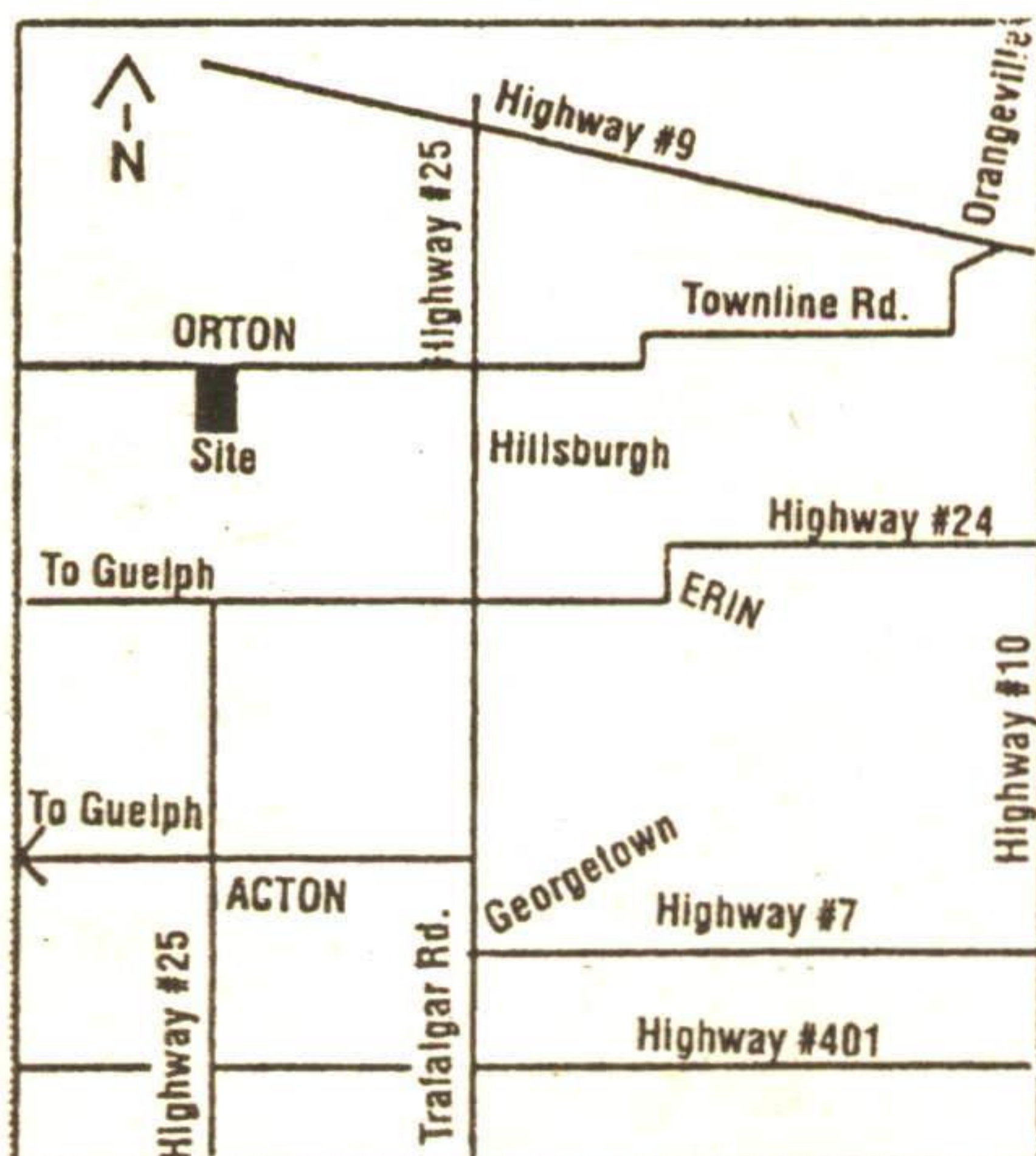
Hours: Sat., Sun., Mon., Tues.
Noon-5 p.m.

Wed., Thurs., Fri. - CLOSED
Sales & Construction Managed by

Petersfield Developments

Builder's of fine homes
in Orangeville & Brampton

*Brokers Protected



Excellent Service Rating
By Ontario New Home Warranty



NATIONAL REAL ESTATE SERVICE

NRS BRAND REALTY INC.