

Turf Tips



Duncan Atkinson
Eileen Atkinson

MOWING YOUR LAWN

The appearance and health of your lawn is maintained by mowing your lawn at the proper height. A common, very serious error is to mow lawns too short!

A lawn should always be mowed at least 5 to 6 cm (2 to 2 1/2 inches) above the ground. Mowing height should be increased during the heat of summer. Grasses require the longer cut to survive the summer heat and drought.

The lawn should be mowed frequently so that only a small clipping is taken from the grass plant. Never remove more than 1/3 of the total grass blade when mowing.

Mower blades should be kept razor sharp. This sharp cut will make a clean wound that will heal quickly, look tidy and resist disease attack. It may be necessary to have mower blades sharpened 2-3 times yearly. Ideally, the best time to mow your lawn is early morning.

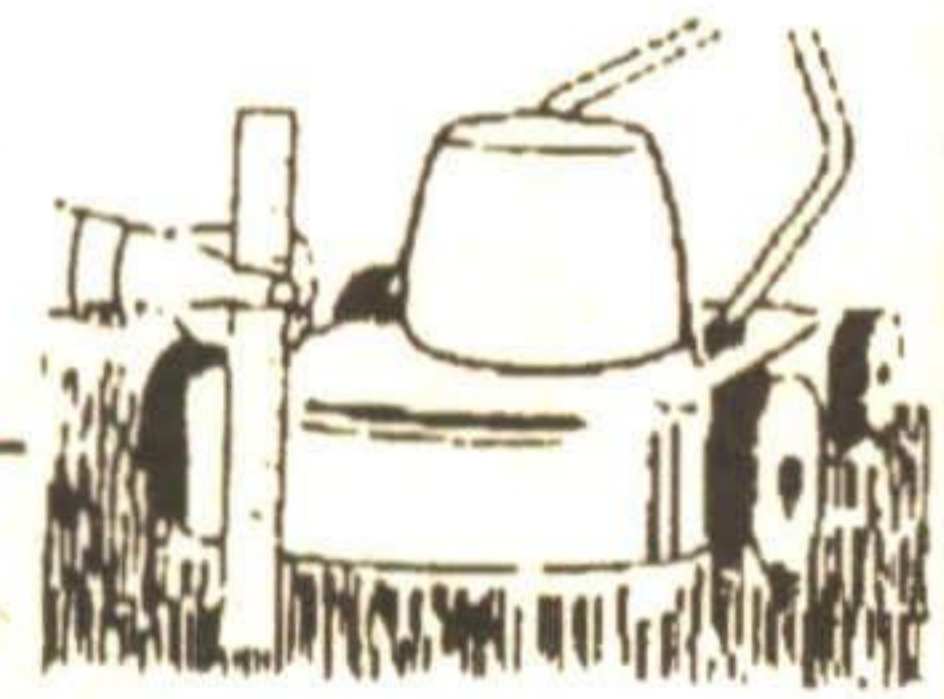
Weed Man®

WE CARE FOR YOUR LAWN!

This is a weekly lawn care column.

For additional information contact Duncan or Eileen

873-2062



72 Mill Street #8
Georgetown, Ontario



"I LIKE YOUR OPTIMISM, RICH..."

FOR TRAVEL INFORMATION - GIVE US A CALL

TRAVEL ROOS AGENCY

232 GUELPH ST., UNIT 10, GEORGETOWN
873-2000

GIVE
MICHELLE
A CALL....
873-0301
ASK HER
ABOUT
THE
UPCOMING
REAL
ESTATE
FEATURE!

A Rare Opportunity To Own A Piece of History! Offered at only \$289,000

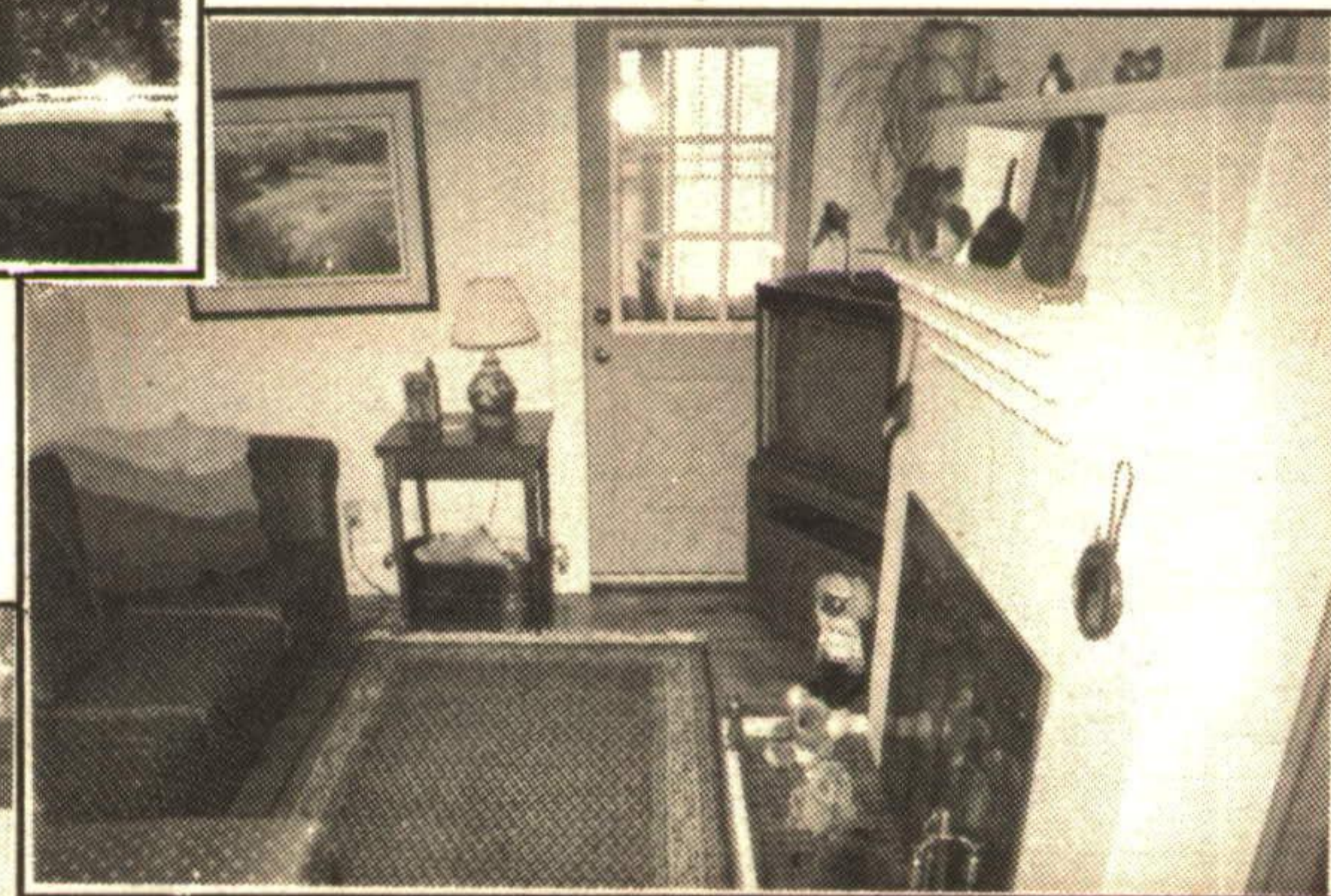


Just off the entry there is a charming den that has a brick fireplace and a door leading to the enclosed sun porch, the perfect setting for casual entertaining. The gracious and inviting living room is divided dramatically by lovely pocket doors from the formal

dining room.

A delightful dream kitchen is brimming with cupboards galore and every conceivable convenience, gleaming hardwood floor and sunny eating area. This lovely kitchen has been tastefully blended into the design of the home also has access into the sun porch.

On the second storey there are four bedrooms with gorgeous pine floors that have been lovingly restored. Just off the master bedroom there is a cozy sitting room or library with French doors to a front balcony.



On the third storey there is a walk up attic that is unfinished but has unlimited potential for a studio, nanny's suite, etc.

Also enjoy the comfort of the new high efficiency gas furnace, in addition to the central air conditioning in



Step back in time and experience the elegance and grandeur of days gone by through classic architecture. This exquisitely restored stately residence offers many original architectural details found only in classic older homes. This exclusive landmark property is one of Georgetown's finest historical homes CIRCA 1885. A picturesque piece of history tastefully restored to preserve its classic charm and elegance.

Set in a parklike neighbourhood of well kept homes, this fine residence is only a stroll to schools, shops and transportation. Set on a mature treed property, it is further enhanced by extensive landscaping. Flagstone steps and walkway lead up to the inviting front porch.

Gracious entry hall has plush broadloom and greets guests and family with warmth. The centre hall plan provides access to entire house without undue traffic thru other rooms.

summer.

The detached double car garage has a loft that has tremendous potential as a future guest house or summer studio, or use your imagination.

Many of the windows in this classic home are either leaded glass, beveled glass, or stained glass.

This exquisite home has been tastefully decorated and impeccably maintained. The quality, fine details and appointments make this fine home truly gracious and elegant.



Re/Max Suburban (91) Inc.

For Your Personal Appointment Call
Peter or Yvonne Hrkac

Sales Representatives

877-5211 or 874-3051

