

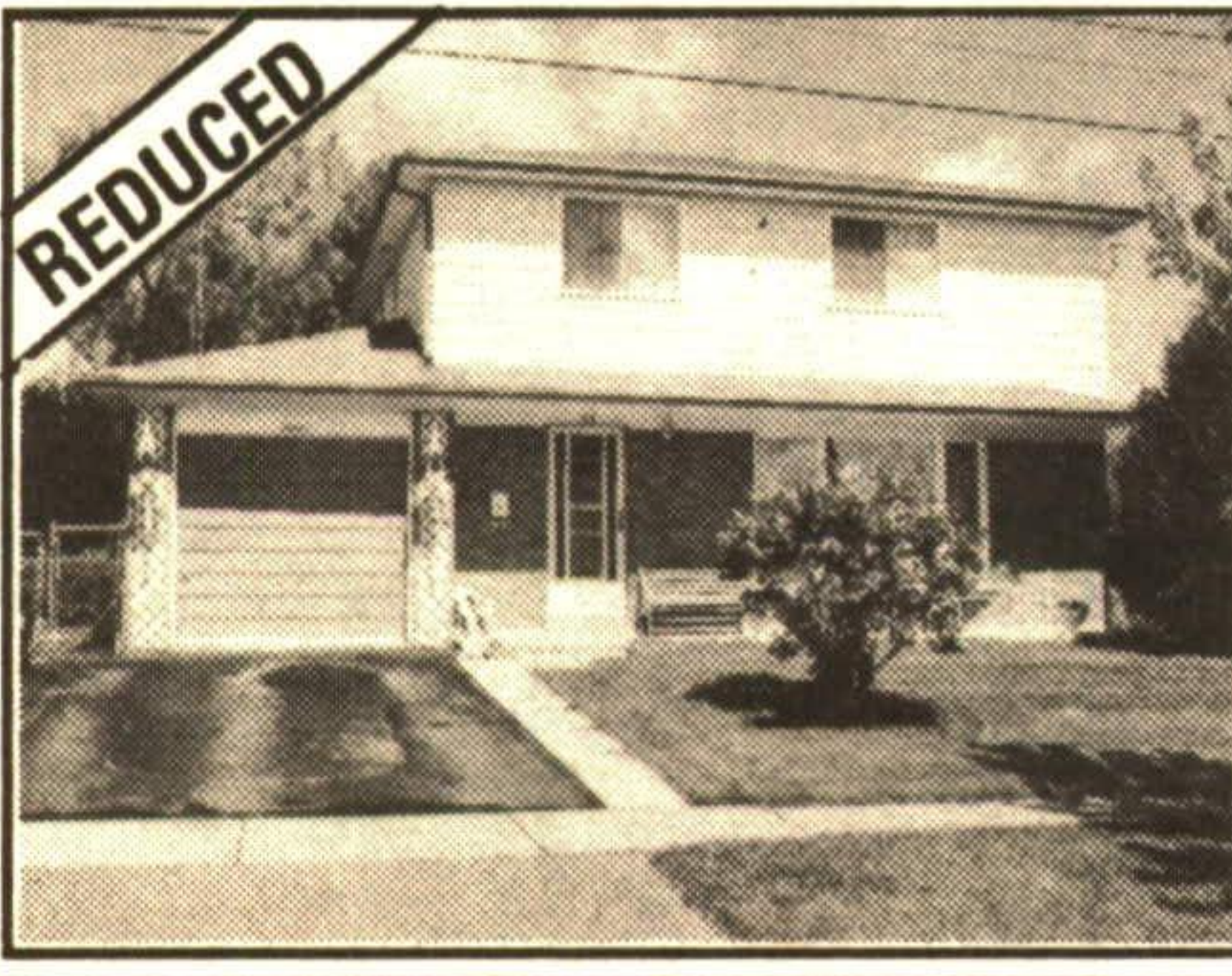


RE/MAX Brampton Inc. Rltr.

Jim & Jeanne Christie

Sales Representatives

456-1000 459-3981



OPEN HOUSE
JUNE 12 12:30-4:00
23 Garnet St.

A STEAL OF A DEAL
4 BEDROOM DET. - \$169,900
Immaculately kept & nicely decorated, upgraded kitchen, walk-in from garage, living room with bay window. Separate dining room with walkout. Basement finished with small office. Best buy on the market. Give us a call.

Jim & Jeanne Christie 456-1000

RE/MAX

BLUE SPRINGS

Realty (Halton) Corp.

SERVICE OF THE '90's!

Wayne will market your property on TWO Real Estate Boards with over 1500 sales reps or members at no additional cost to you!

BUS. 856-4348

TOR. (416) 874-3053



Wayne Saunders

*Sales Associate

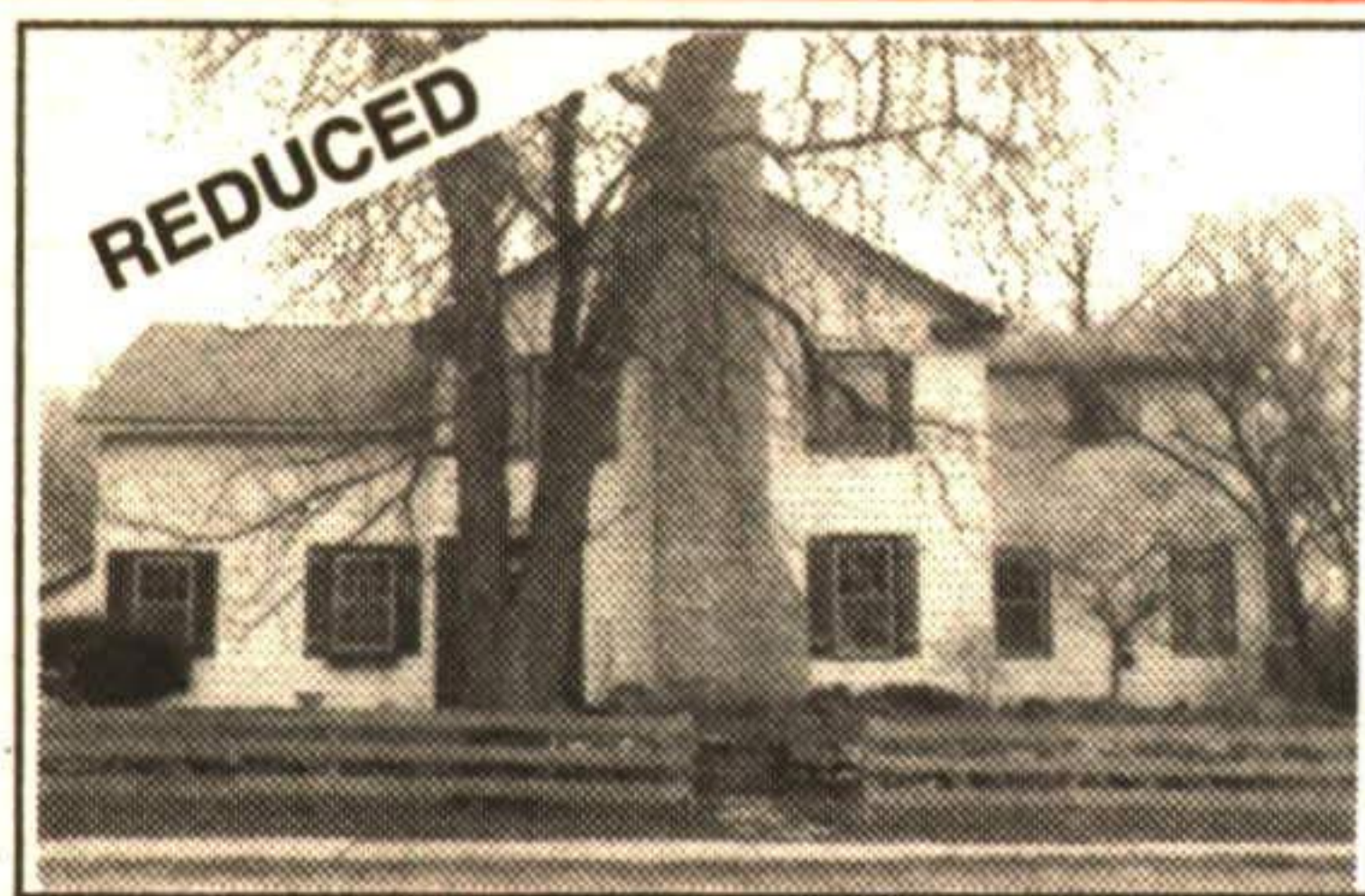
SERVICE OF THE '90's!

Wayne offers a written comprehensive market evaluation of your home at no cost to you!

FAX. 856-2128

Wayne Sells Properties Just Like Yours!

\$204,900 - ROCKWOOD



Century home on 2 1/2 lots, 1 of which maybe severed. Over 3,200 sq. ft. of history. Large principal rooms and 6 plus bedrooms. Call Wayne Saunders* for more information. 856-4348.

RMRW93-65

\$279,900 - COUNTRY AT ITS BEST



On a tranquil setting near Rockwood of over 2 1/2 well treed acres this 13 year old custom built, brick home has all the toys. Over 2600 sq. ft. of functional living space plus a basement apartment with walkout. The additional garage is only 3 years old. Call Wayne* to view this excellent value. RMRW93-01

RMRW93-01

COUNTRY DELIGHT - \$234,900

\$234,900 - 1-1/2 MILES NORTH OF HWY. 7



Located just east of Rockwood this 4 year old 1850 sq. ft. sidesplit has much to offer including a 29 x 21 rec room with woodstove and sliding doors, walkout, large principal rooms + 3 bathrooms. Call Wayne*. RMRW93-16

Ready for your country dream. This 46 acre parcel has mature maples across the front, a paved road and lovely views of the Eramosa Valley to the rear. 16 acres of bush, 30 acres presently worked and numerous home sites. Call Wayne*. RMRW93-17

RMRW93-17

\$189,900 - A JOY TO BEHOLD!



This quality custom built 1400 sq. ft. bungalow is now available, placed on a manicured 1.2 acre with mature trees, and a 2nd garage (workshop) and carport. A recent custom oak kitchen, new roof and central air are a few of the features. RMRW93-49

RMRW93-49

\$199,000 - EDEN MILLS



Presently 2 residences (1 was built 5 years ago). This updated property has some commercial uses as well. "Placed on a mature lot 78' x 132' and in a picturesque setting, near the River. Call Wayne* for details. RMRW93-56

RMRW93-56

\$314,900 - EDEN MILLS RETREAT

\$289,000 JUST FOR YOU



A private piece of nature (2.7 acres) backing onto the Eramosa River. Canoeing or skating, pick your season. This 2650 sq. ft. residence lacks nothing. A recent gourmet kitchen, 24' x 21' oak floored living room with massive stone fireplace, 21' x 14' master bedroom with 4 pc. bath and walk-in closet, 21' x 13.6' elevated family room. The list goes on and on. A pleasure to view, a pleasure to own. Call Wayne* for details of this fine offering. 856-4348. RMRW93-57



16.5 scenic acres 3 miles north of Hwy. 24 on a maple-lined paved road. Featuring a 12 year old custom built quality home. Approx. 13 acres workable and a steel, insulated and heated workshop with large door access. This property shows a "10". Call Wayne Saunders*. RMRW93-55

RMRW93-55

\$195,500 ROCKWOOD'S FINEST

\$159,900 - SOUTH ROCKWOOD



\$195,500. Offered under replacement cost. This lovely upgraded 1750 sq. ft. home features cathedral ceilings, fireplace, ceramic floors, main floor laundry, ensuite bath and walk-in closets. Need I say more? Just call Wayne*. RMRW93-25



This spacious updated century home offers all the modern conveniences with the charm of yesteryear. 2 minute walk from Rockwood Conservation Park on a well treed and landscaped lot with extensive rockeries & terraced grounds a pleasure to view. Call Wayne*. RMRW93-38

RMRW93-38

* MEMBER OF THE GUELPH & DISTRICT REAL ESTATE BOARD AND THE BRAMPTON REAL ESTATE BOARD TO SERVE YOU BETTER!

PROVEN PERFORMANCE

ARTHUR F. JOHNSON & ASSOCIATES LIMITED REALTOR

877-5165

MARTHA SUMMERS*

877-5165 874-3040

PRESIDENTS J.A. Tor.

833-9714 873-0655

Erin

Res.



MARTHA SUMMERS
Sales Representative*



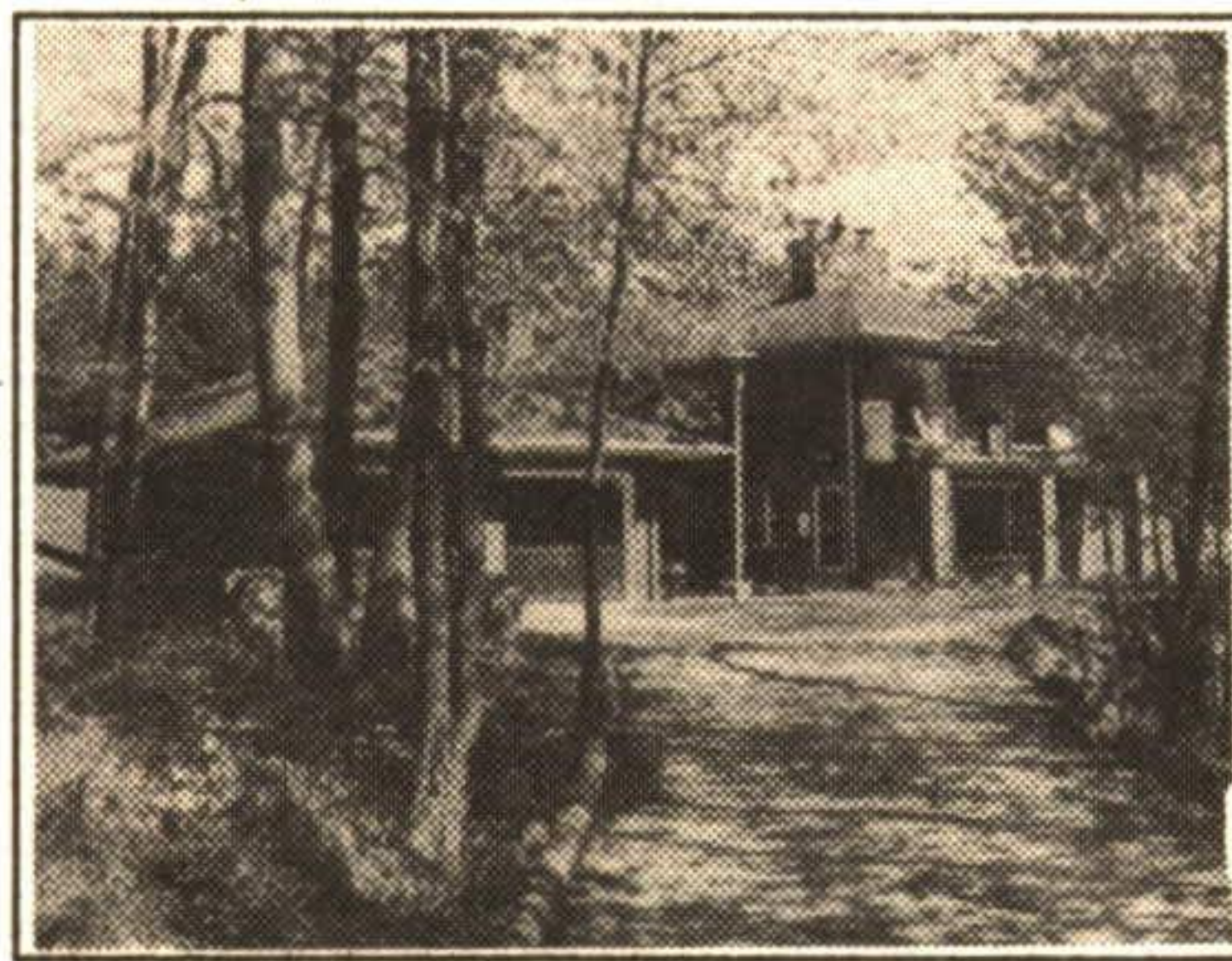
ULTIMATE LIVING

5 acres of paradise designed to take advantage of comfort and country enjoyment. This must be seen more than once to appreciate all that is here. \$525,000. 93-2-395



FABULOUS 100' RAVINE LOT

\$149,000
Upgraded with new kitchen with ceramics, new windows, upgraded bathroom with jacuzzi. Detached garage. What a great start. 93-2-322



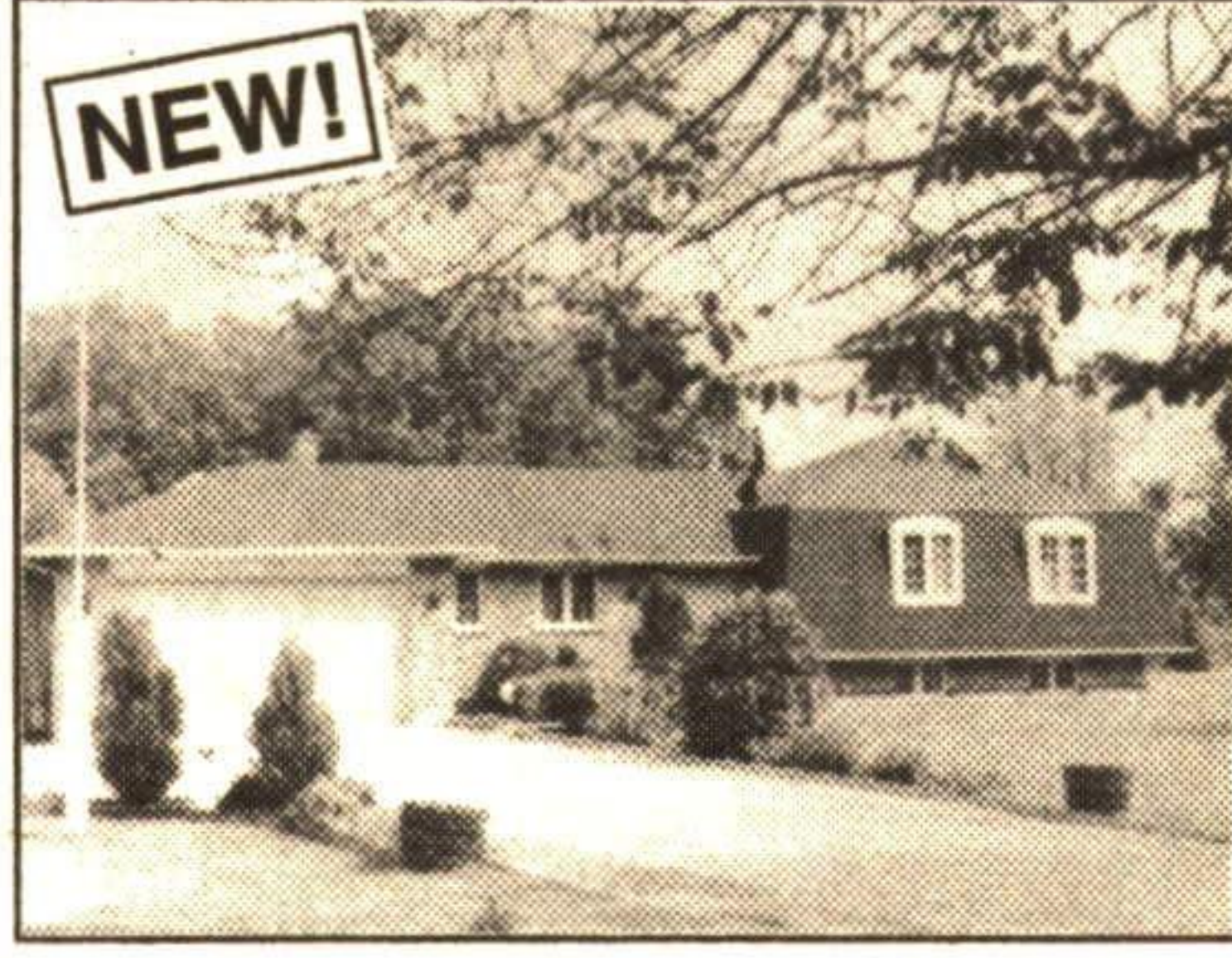
LOOK AGAIN IT'S ALL HERE!

10 acres - superb hardwood bush, springfed pond and rolling lawns. Bright and spacious executive home with 2 fireplaces, 4 bedrooms, hardwood floors and more! Located south of Erin Village. 93-2-339



COUNTRY LIVING

Renovated 5 bedroom brick Victorian on 47 acres complete with spring fed pond, barn and hardwood bush. Excellent location for commuting. \$599,000. 93-2-396



CUSTOM BUILT STONE HOME

Excellent Halton location on rural 5 acres. Superb spring fed pond. Quality throughout with oak kit, beveled French doors, 2 stone fireplaces on main level plus a 5 piece ensuite. \$279,000. 93-2-410



SWIM YEAR ROUND

What you don't see is the indoor pool with balcony leading to 2 of the bedrooms. 25' living room with beamed vaulted ceilings and hardwood floors. Full in-law suite. A must to see at \$359,900. 93-2-411



COUNTRY CLASSIC

5 fireplaces, 2 storey atrium, 80 acres with pond, stream, bush and meadow. A bank barn completes the picture. Ultimate country living. 93-2-332



SUPER STARTER ON QUIET STREET

Bright eat-in kitchen, spacious living room and dining room. The pool is ready and waiting. \$119,000. 93-2-358



GEORGETOWN INCOME PRODUCING

\$319,000
Well maintained in good location. Separate large 2 car garage, plenty of parking. Adjacent corner lot available at \$99,900. 93-2-266



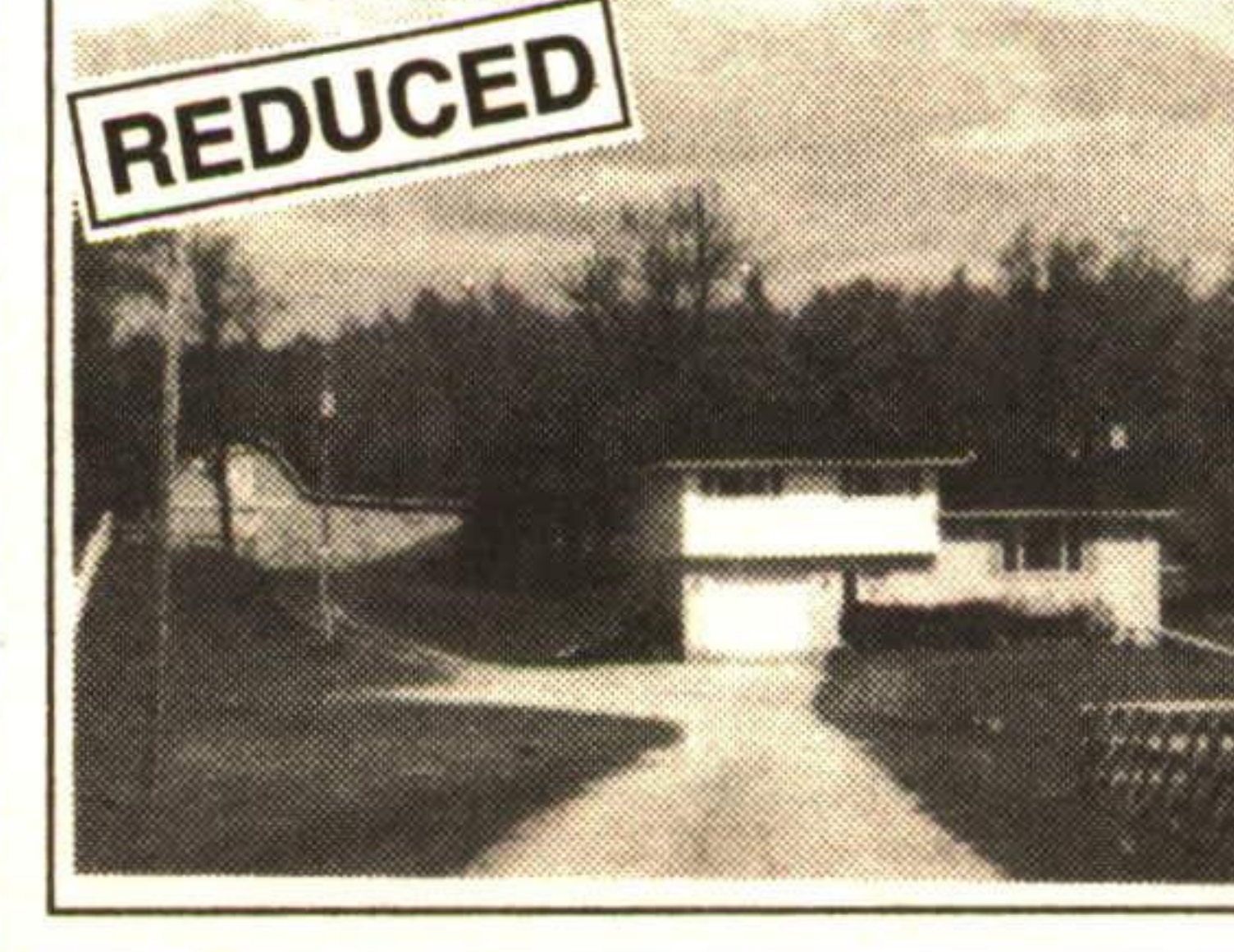
COUNTRY VALUE

3.3 ACRES
300 feet frontage on paved road. Open concept, vaulted ceilings, sunroom, large bedrooms with walkouts, full ensuite, main floor laundry. One level living south of Erin Village. \$178,500. 93-2-260



ERAMOSIA - SUPERB 24 ACRES

\$329,000
Large principle rooms, overlooking springfed pond. Greenhouse, workshop, meadow and bush. 93-2-305



ERIN 5 ACRES

\$224,900
Superb hardwood bush for walking or riding. Well maintained home and barn in move-in condition. Hardwood floors. Great location. 93-2-271



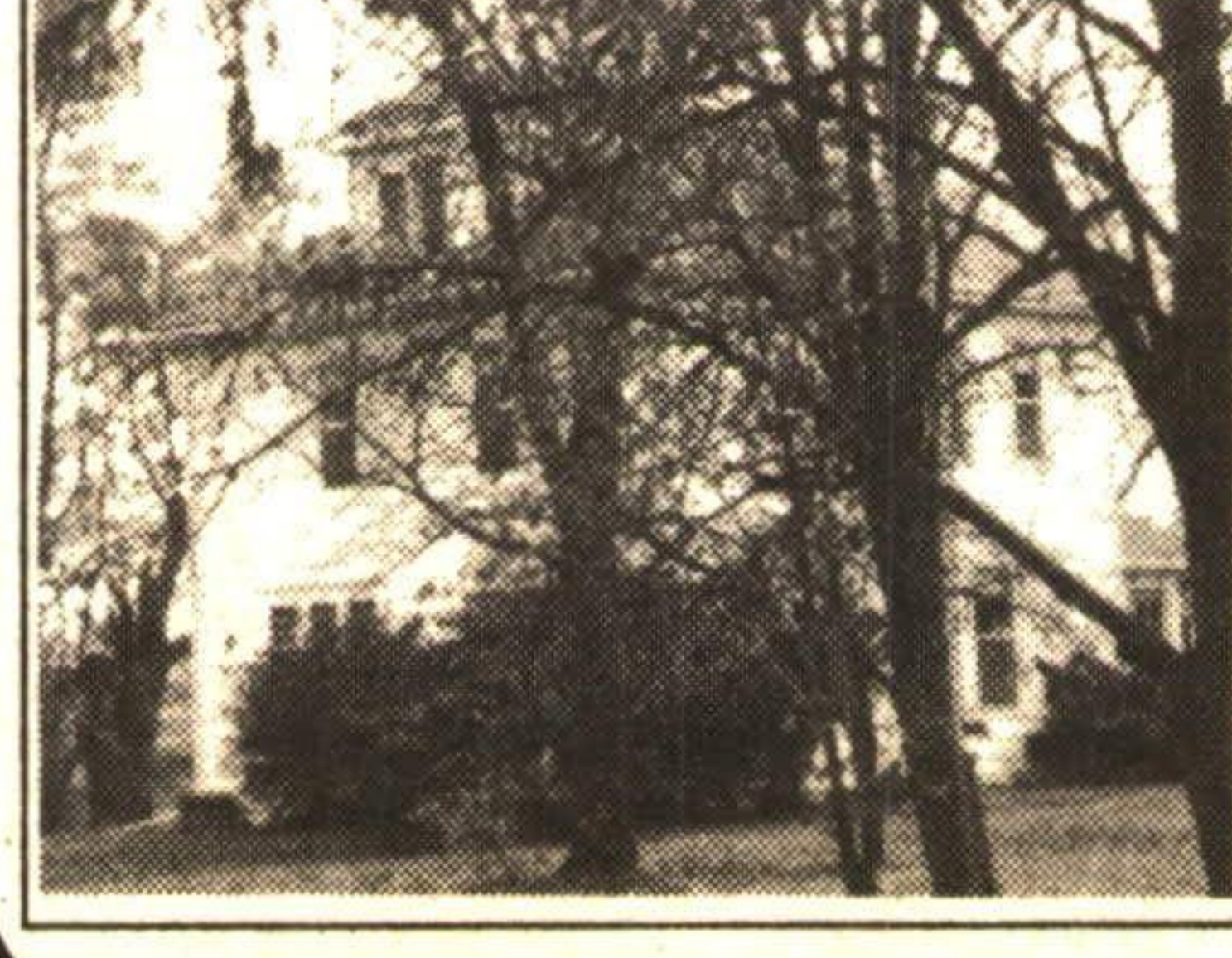
ERIN 10 ACRES

\$249,000
Good location, 3 bedrooms, open concept with lovely views of property. Finished rec room. 24 x 40 barn or workshop. 92-2-275



SUPERB CALEDON EXECUTIVE

A must to see inside, spacious and gracious with hardwood floors, 25' dining room with fireplace, 4 bedrooms and a great country kitchen. A 20 acre wooded wonderland. 93-2-147



CALEDON REDUCED

\$244,900
Backs onto a ravine. Bright and spacious, bleached oak kitchen, hardwood floors, finished loft. 92-2-495



EXECUTIVE REQUIRED

29 private acres with lovely views over field towards hardwood bush. Cedar sunroom, hot tub, large deck plus 40 x 60 outbuilding. \$599,000. 93-2-347