

THE STANDARD OF EXCELLENCE

JOHNSTON & DANIEL

LIMITED - REALTOR
14396 CREDITVIEW RD., CHELTENHAM
COUNTRY PROPERTIES
416-838-3830 TOR. 846-2270



IN THE STORYBOOK VILLAGE OF CHELTENHAM.

\$164,900

Spend winters curled up by the woodstove and summers on the deck enjoying your river view. Country living with an easy commute. Call Candis Roussos 846-2270.

ONLY \$179,000 IN CALEDON!

Starting out or retiring? This could be for you. Fully renovated three bedroom home overlooking the Credit River. Gleaming pine floors, cathedral ceilings and more. To view call Candis Roussos 846-2270.

RE/MAX

SERVICE OF THE '90's!

Wayne will market your property on TWO Real Estate Boards with over 1500 sales reps or members at no additional cost to you!

BUS. 856-4348

TOR. (416) 874-3053



Wayne Saunders
Sales Associate

BLUE SPRINGS

Realty (Halton) Corp.

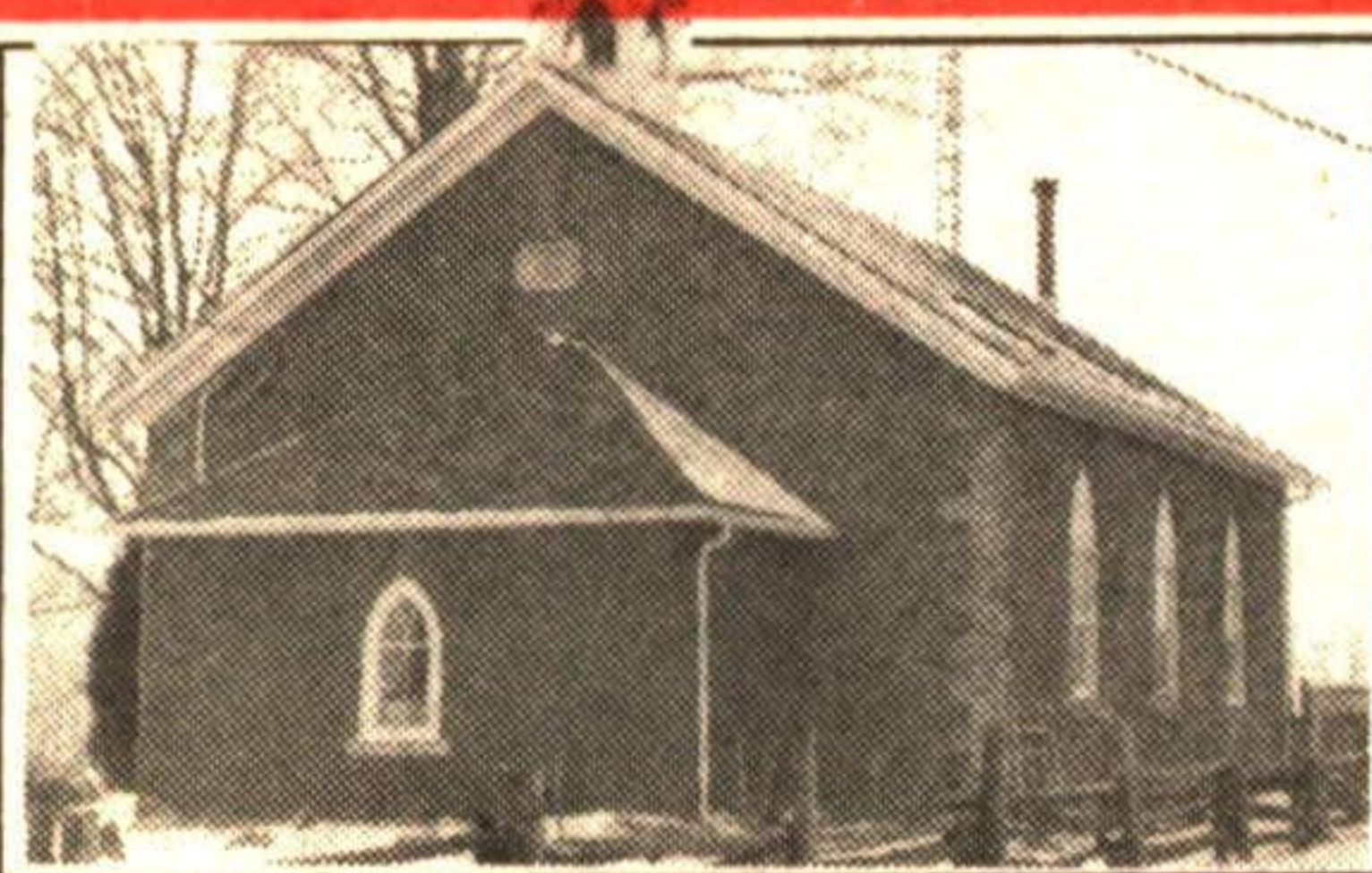
SERVICE OF THE '90's!

Wayne offers a written comprehensive market evaluation of your home at no cost to you!

FAX. 856-2128

Wayne Sells Properties Just Like Yours!

\$184,900 - IT ISN'T VERY OFTEN...



...that a country school house is offered for sale. This historic, renovated home is located just east of Rockwood. Placed on .8 acre and featuring 3 bedrooms, country kitchen, main floor laundry, cathedral ceilings and much more! Just call Wayne*. RMRW93-26

\$279,900 - COUNTRY AT IT'S BEST



On a tranquil setting near Rockwood of over 2 1/2 well treed acres this 13 year old custom built, brick home has all the toys. Over 2600 sq. ft. of functional living space plus a basement apartment with walkout. The additional garage is only 3 years old. Call Wayne* to view this excellent value. RMRW93-01

COUNTRY DELIGHT - \$234,900

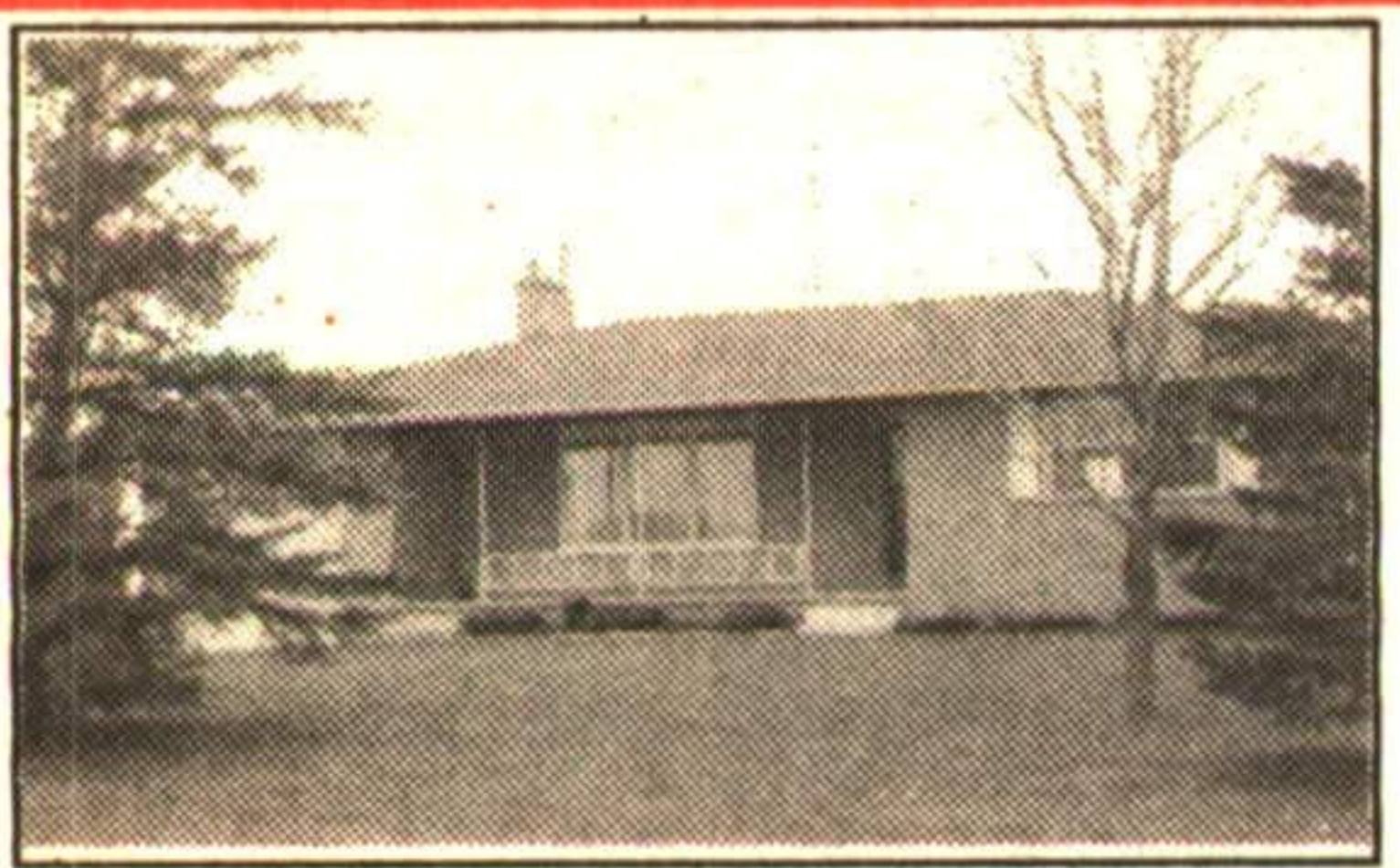


\$154,000 YOUR OWN NATURAL PARADISE
Located just north of Acton off Hwy. 25. 22.8 acres of tranquil country. Rolling land with approx. 10 acres of bush, 4 acres are hardwood and approx. 12 acres of worked land. Very secluded & private. Call Wayne*. RMRW93-28

\$234,900 - 1-1/2 MILES NORTH OF HWY. 7

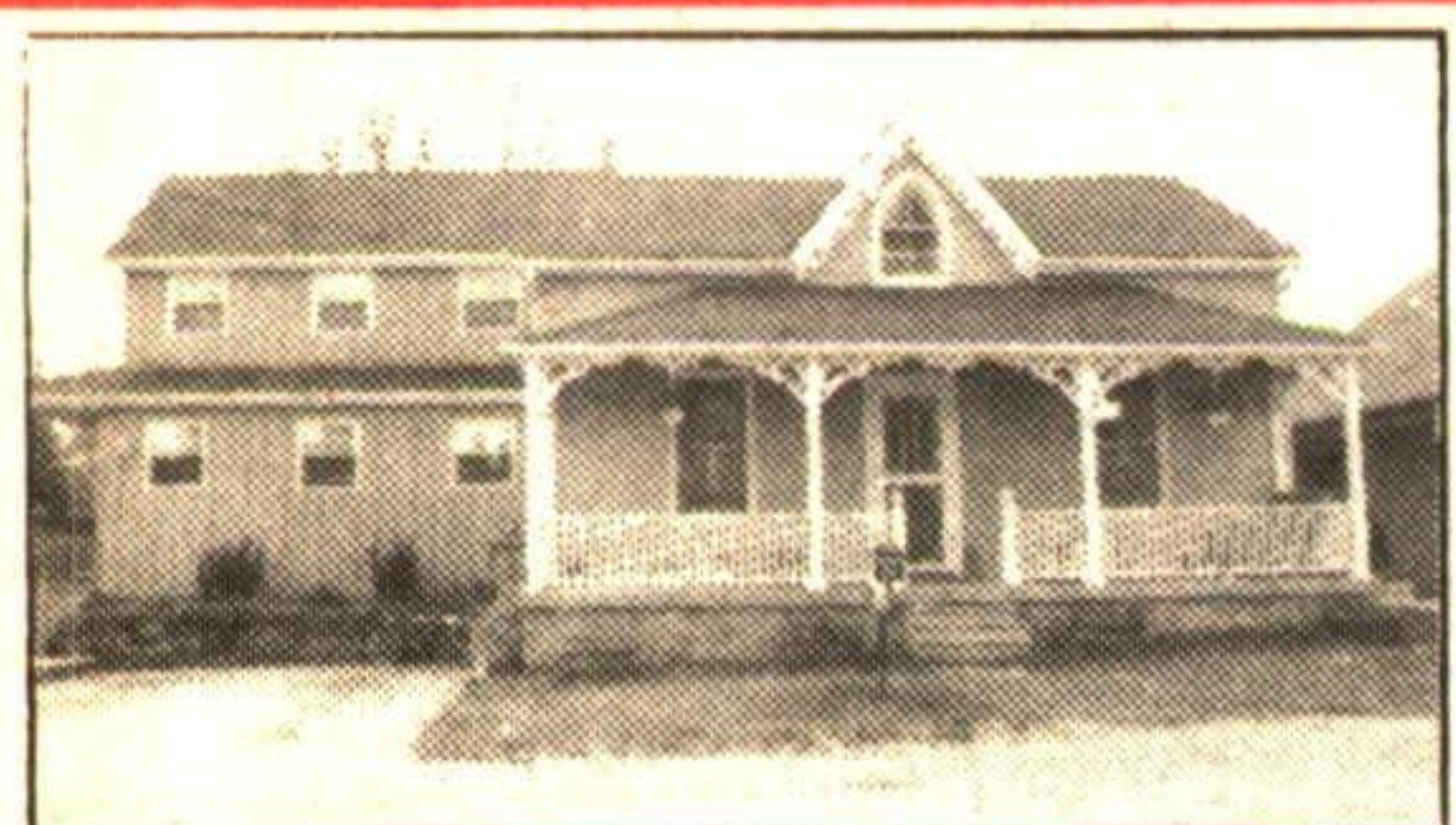
Ready for your country dream. This 46 acre parcel has mature maples across the front, a paved road and lovely views of the Eramosa Valley to the rear. 16 acres of bush, 30 acres presently worked and numerous home sites. Call Wayne*. RMRW93-17

\$189,900 - A JOY TO BEHOLD!



This quality custom built 1400 sq. ft. bungalow is now available, placed on a manicured 1.2 acre with mature trees, and a 2nd garage (workshop) and carport. A recent custom oak kitchen, new roof and central air are a few of the features. RMRW93-49

\$199,000 - EDEN MILLS



Presently 2 residences (1 was built 5 years ago). This updated property has some commercial uses as well. Placed on a mature lot 78' x 132' and in a picturesque setting, near the River. Call Wayne for details. RMRW93-56

\$225,000 - 20 ACRE HOBBY FARM



Located 5 miles north of Hwy. 24. This spacious property is approx. 5 acres of bush & a secluded 2190 sq. ft., 2 storey, 19 year old home. Included is a 35' x 25' block & steel barn. Just call Wayne*. RMRW93-27

\$195,500 ROCKWOOD'S FINEST



\$195,500. Offered under replacement cost. This lovely upgraded 1750 sq. ft. home features cathedral ceilings, fireplace, ceramic floors, main floor laundry, ensuite bath and walk-in closets. Need I say more? Just call Wayne*. RMRW93-25

\$319,000 VALUE PLUS!



This spacious 3800 sq. ft. custom built home is now available in Rockwood. Placed on a double lot with 4 car garage and backing onto a conservation park. This home is an excellent value. All the toys and must be seen to appreciate. Call Wayne*. RMRW93-32

\$159,900 - SOUTH ROCKWOOD



This spacious updated century home offers all the modern conveniences with the charm of yesteryear. 2 minute walk from Rockwood Conservation Park on a well treed and landscaped lot with extensive rockeries & terraced grounds a pleasure to view. Call Wayne*. RMRW93-30

* MEMBER OF THE GUELPH & DISTRICT REAL ESTATE BOARD AND THE BRAMPTON REAL ESTATE BOARD TO SERVE YOU BETTER!

PROVEN PERFORMANCE

ARTHUR F. JOHNSON & ASSOCIATES LIMITED REALTOR

877-5165

MARTHA SUMMERS*

877-5165

874-3040

Tor.

833-9714

873-0655

Erin

Res.



MARTHA SUMMERS
Sales Representative*



SUPER STARTER
\$129,000

Quiet street, large yard with above ground pool. Bright and spacious 2 BR home with high ceilings. 93-2-358



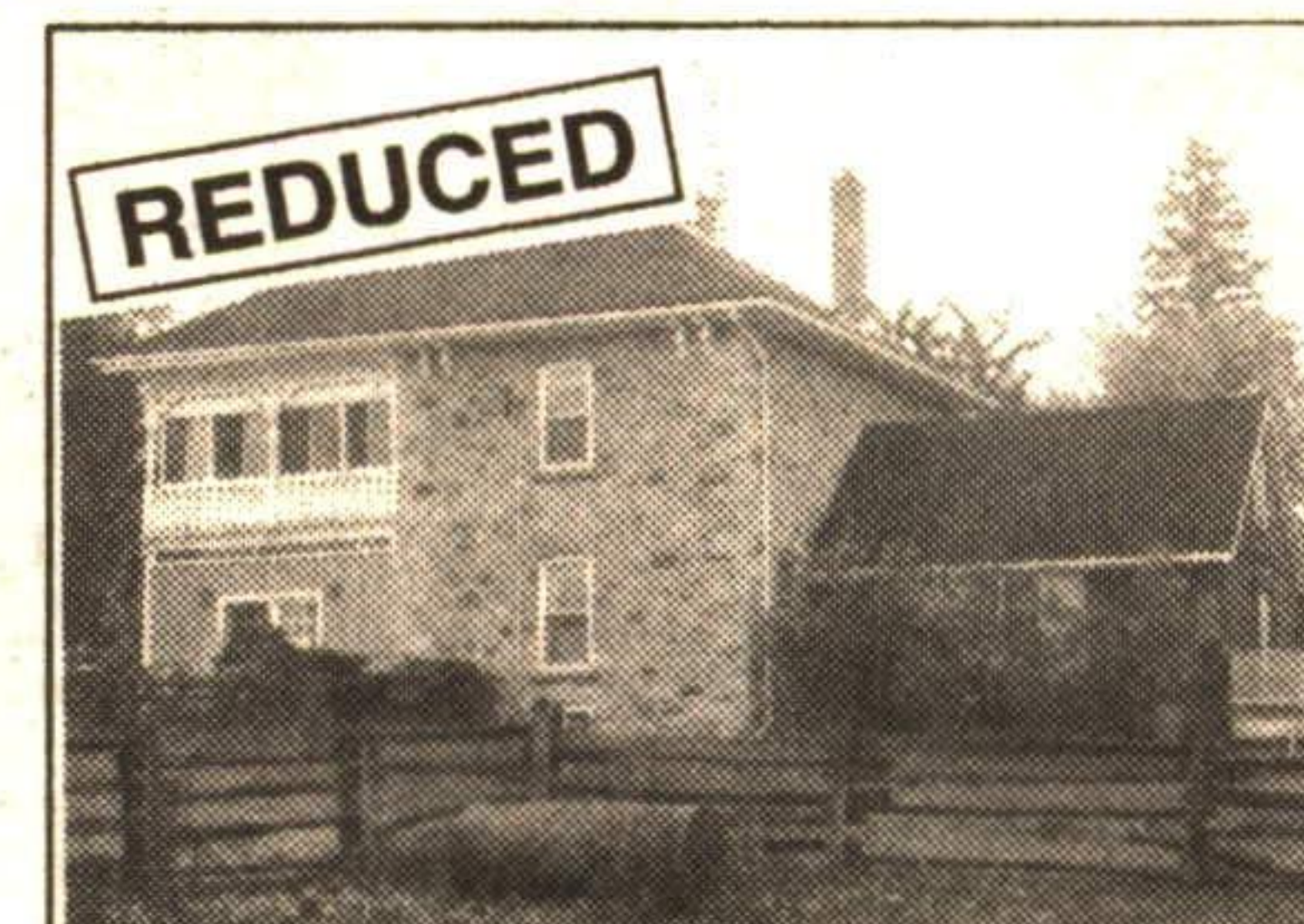
FABULOUS 100' RAVINE LOT
\$149,000

Upgraded with new ceramics, new windows, upgraded bathroom with jacuzzi. Detached garage. What a great start. 93-2-322



LOOK AGAIN IT'S ALL HERE!

10 acres - superb hardwood bush, springfed pond and rolling lawns. Bright and spacious executive home with 2 fireplaces, 4 bedrooms, hardwood floors and more! Located south of Erin Village. 93-2-339



ERIN 84 ACRE HORSE FARM

\$519,000 includes large century stone farmhouse, 38 box stall and a super indoor arena. Paddock, springfed pond, stream and fields complete the setting. 92-2-485



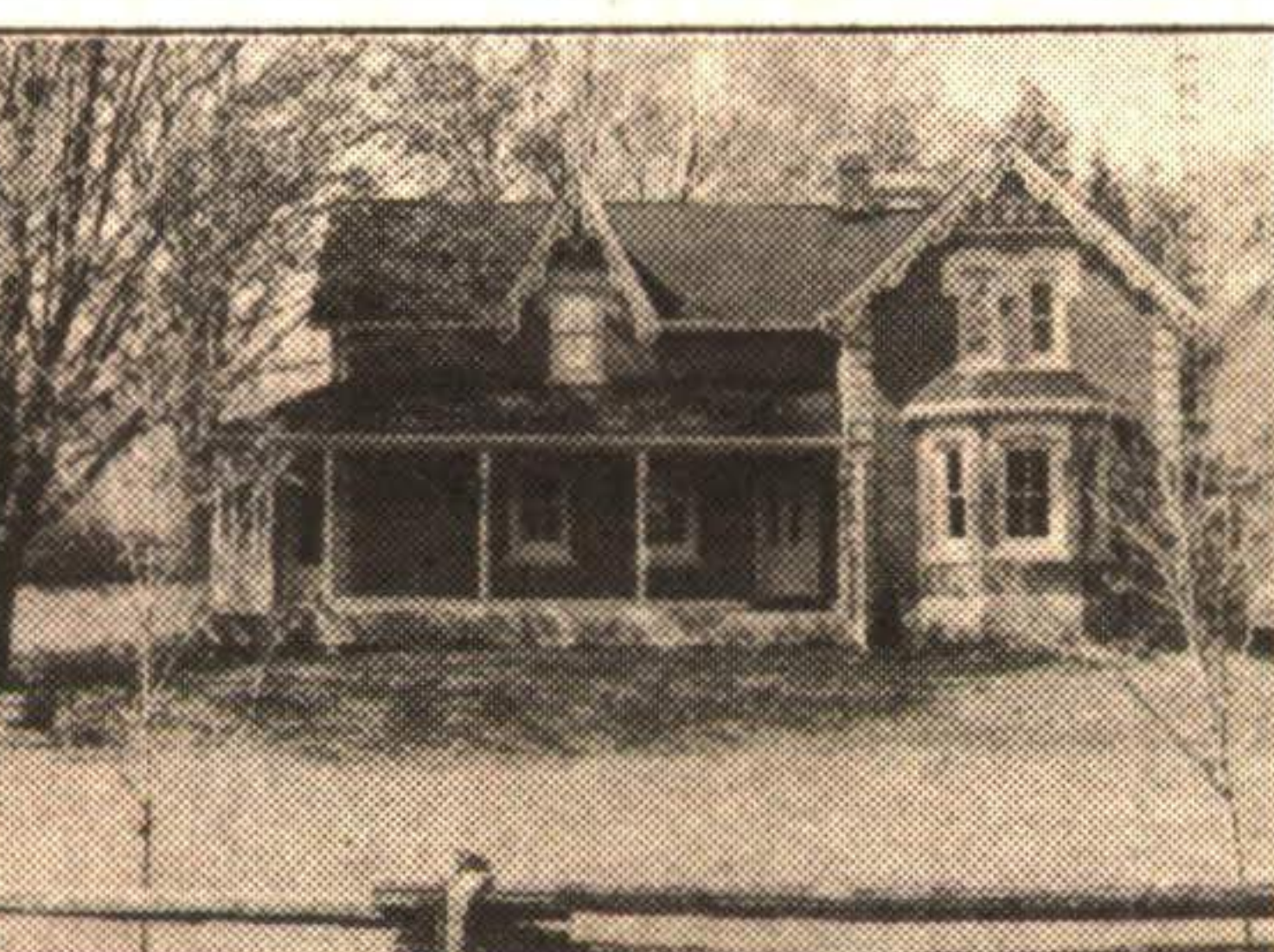
HILLSBURGH DEAD END STREET
\$199,000

Spacious, open concept, 3+ bedrooms, large country kitchen, heated workshop plus 2 car garage. Great for a car buff! 93-2-212



GEORGETOWN STARTER
\$154,900

339' deep, mature lot. High ceilings, walkout from dining room to yard, eat-in kitchen, 3 bedrooms. 93-2-225



COUNTRY CLASSIC

5 fireplaces, 2 storey atrium, 80 acres with pond, stream, bush and meadow. A bank barn completes the picture. Ultimate country living. 93-2-332



SUPER STARTER ON QUIET STREET

Bright eat-in kitchen, spacious living room and dining room. The pool is ready and waiting. \$129,000. 93-2-358



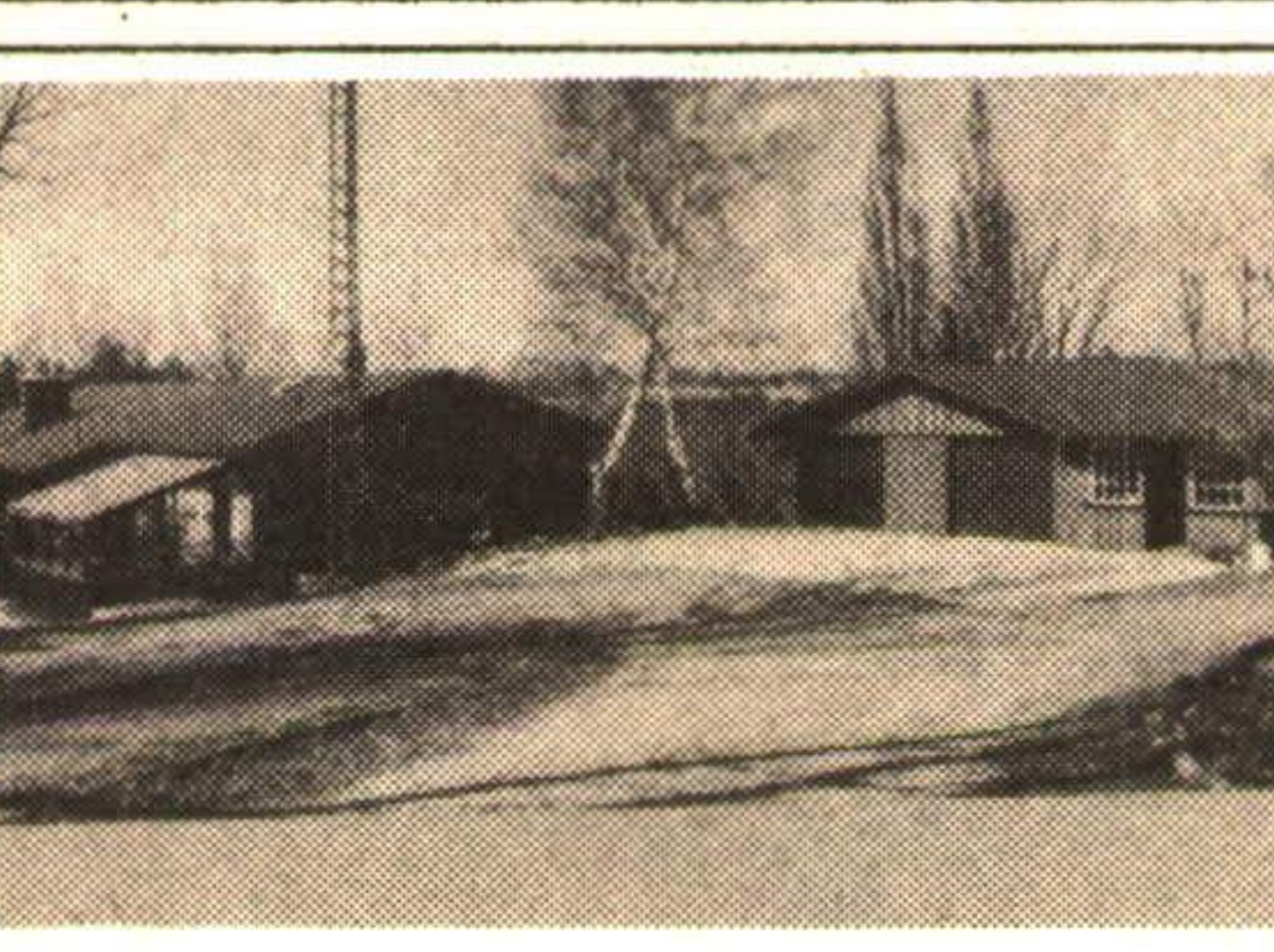
GEORGETOWN INCOME PRODUCING
\$319,000

Well maintained in good location. Separate large 2 car garage, plenty of parking. Adjacent corner lot available at \$99,900. 93-2-266



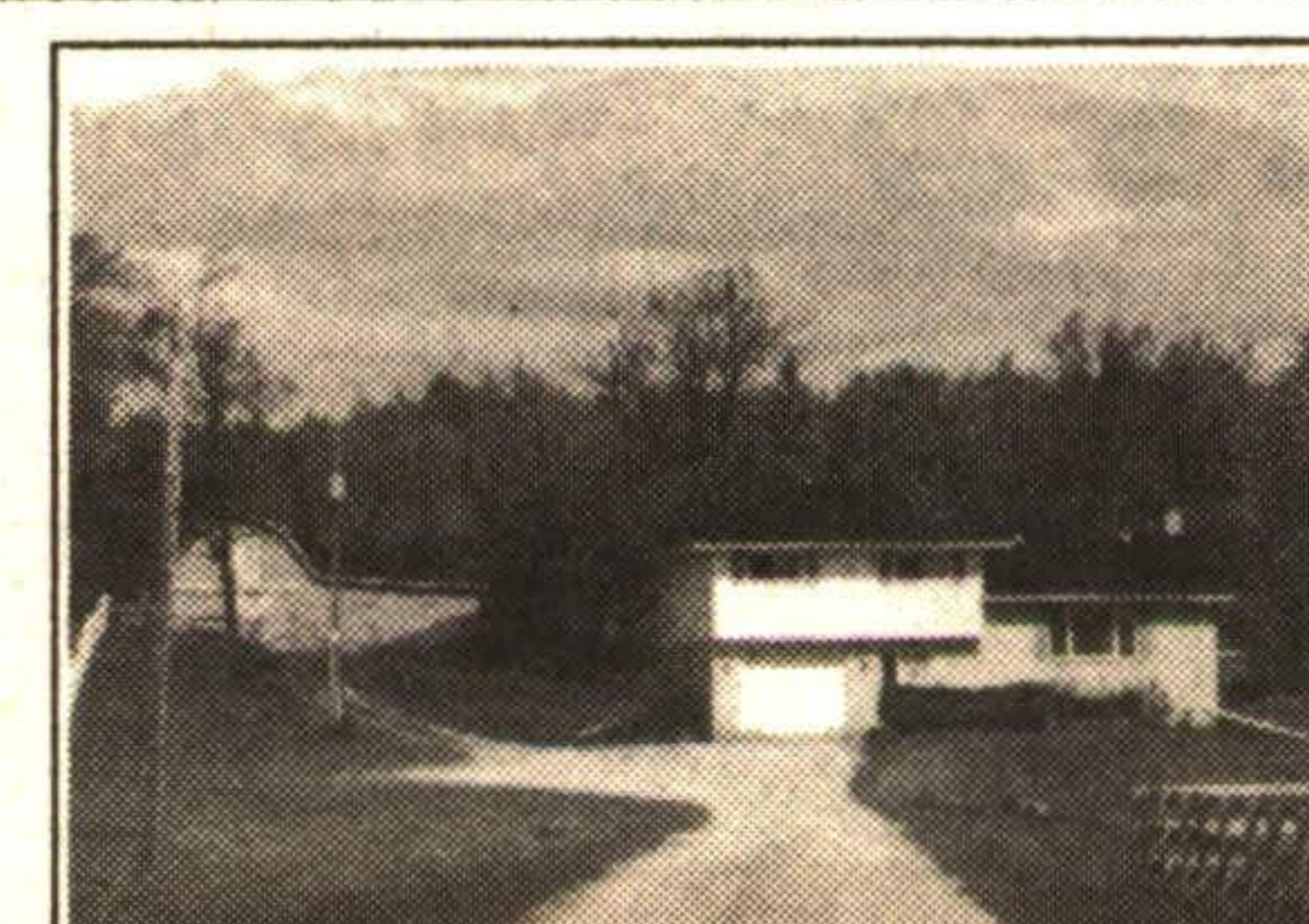
COUNTRY VALUE 3.3 ACRES

300 feet frontage on paved road. Open concept, vaulted ceilings, sunroom, large bedrooms with walkouts, full ensuite, main floor laundry. One level living south of Erin Village. \$178,500. 93-2-260



ERAMOSA - SUPERB 24 ACRES
\$329,000

Large principle rooms, overlooking springfed pond. Greenhouse, workshop, meadow and bush. 93-2-305



ERIN 5 ACRES
\$239,900

Superb hardwood bush for walking or riding. Well maintained home and barn in move-in condition. Hardwood floors. Great location. 92-2-459



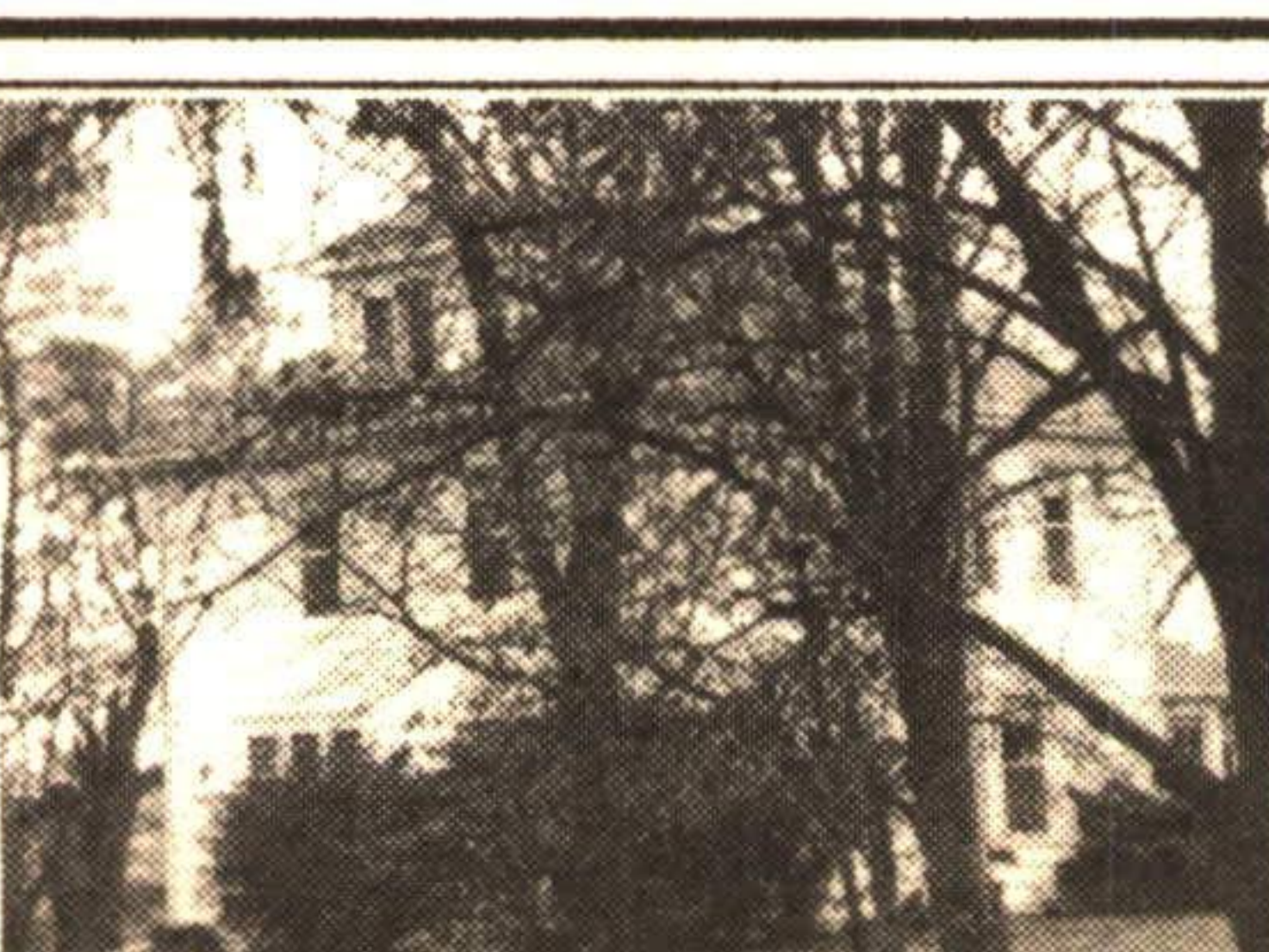
ERIN 10 ACRES
\$249,000

Good location, 3 bedrooms, open concept with lovely views of property. Finished room. 24 x 40 barn or workshop. 92-2-275



SUPERB CALEDON EXECUTIVE

A must to see inside, spacious and gracious with hardwood floors, 25' dining room with fireplace, 4 bedrooms and a great country kitchen. A 20 acre wooded wonderland. 93-2-147



CALEDON REDUCED
\$244,900

Backs onto a ravine. Bright and spacious, bleached oak kitchen, hardwood floors, finished loft. 92-2-495



EXECUTIVE REQUIRED

29 private acres with lovely views over field towards hardwood bush. Cedar sunroom, hot tub, large deck plus 40 x 60 outbuilding. 93-2-347