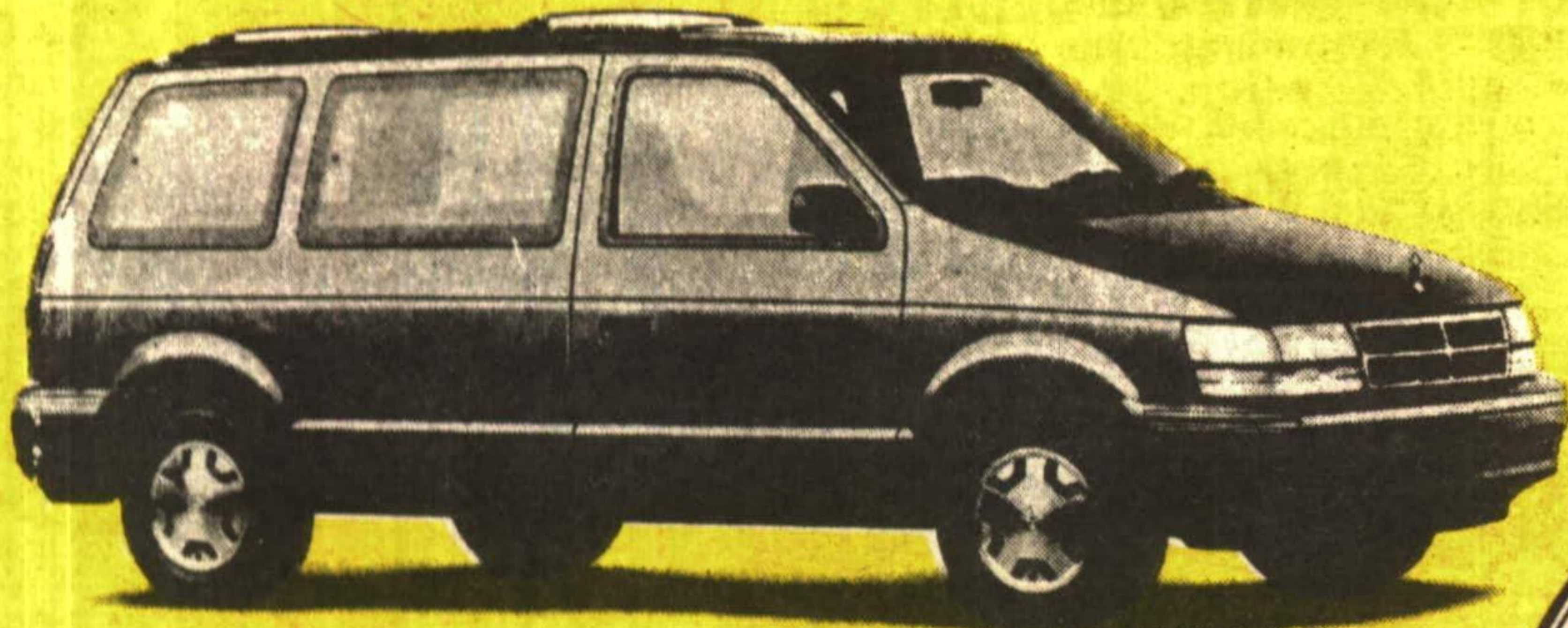


Introducing

The All New **GEORGETOWN CHRYSLER 1993 LTD.**

CHRYSLER'S #1 SALES EVENT *is all about you*

1993 DODGE CARAVAN OR PLYMOUTH VOYAGER



- Standard driver's side bag
- 7 passenger seating
- Air Conditioning
- Auto transmission
- 3.0 litre V6 engine
- Front wheel drive
- Luggage Rack
- AM/FM Stereo
- Convenience light package



As Low As
5.9% Financing
 Cashbacks Up To
\$1500

\$16,293*

LEASE PRICE

\$269**/mo.

\$9,993*

LEASE PRICE

\$179**/mo.

1993 DODGE SHADOW OR PLYMOUTH SUNDANCE

- Standard driver's side bag
- Floor Mats
- Air Conditioning
- Auto transmission
- Centre Console
- Front wheel drive
- Tinted Glass
- AM/FM Stereo
- Convenience light package Pkg. #22D

OVER 20 FULLY CERTIFIED RESALE VEHICLES TO CHOOSE FROM

INCLUDING X3 1993 GRAND VOYAGEURS SE'S
 LOADED WITH 3.3 LITRE, V6, AIR, CASSETTE, CRUISE, TILT, 7 PASSENGER SEATING,
 BALANCE OF FACTORY WARRANTY.

NO FREIGHT, NO AIR TAX, NO GAS TAX

ONLY \$19,885.

*Rebate Assigned to Dealer. Frt., Tax & Lic. Extra

** Lease based on 48 month with \$1,000 down OAC. Frt., Tax & Lic. Extra

GEORGETOWN CHRYSLER (1993) LTD.

Hwy. #7 (336 GUELPH ST.) GEORGETOWN

877-0149 877-5108 846-1170

CHRYSLER All you have to do is drive one.

