

# "JUST TO BE SURE"

**NRS Home Warranty Program**  
Home appliance and home systems warranty program that offers security and peace of mind to both buyers and sellers. A home warranty program to:

- Enhance the value of your home
- Protect your family's budget
- Give your home a marketing edge
- Protect your investment

Give us a call!



**NATIONAL REAL ESTATE SERVICE**  
For more information on  
**THE NRS HOME WARRANTY PROGRAM**  
please call **NRS BRAND REALTY INC.**  
**873-0300**

## Properties for Sale

- \* \$47,500 In Town Lot
- \* \$101,000 Condo. Apt.
- \* \$129,900 In Town Lot For Townhouses
- \* \$214,900 House, 2.7 Acres, Limehouse
- \* \$275,000 62 Acres Close To Town
- \* \$349,000 23 Acres, House, Terra Cotta
- \* \$369,000 New Estate Home To Be Built
- \* \$1,400,000 In Town Industrial Bldg.



Call Don Sargent  
F.R.I., C.R.F., Associate Broker\*\*  
877-5165/874-3040 24 hr pager

**ARTHUR F. JOHNSON & ASSOCIATES**  
LIMITED REALTOR

DO IT YOURSELF  
WITH  
**APC**  
AND SAVE

### PATIO SLABS

24" x 24"  
Grey, Red,  
Brown, White  
from

**\$4<sup>25</sup>** each

(\$3.75 per bundle of 24)

Perma Paving Stone From \$1.15 sq. ft.

**ACTON PRECAST CONCRETE LIMITED**

MANUFACTURERS SINCE 1963

CALL **853-1529**

SEPTIC TANKS & CISTERNS - WELL TILES & CULVERTS  
STEPS & PORCHES - YARD & PATIO PRODUCTS

PROVEN  
PERFORMANCE

ARTHUR F.  
**JOHNSON & ASSOCIATES**  
LIMITED REALTOR

**877-5165**

**MARTHA SUMMERS\***

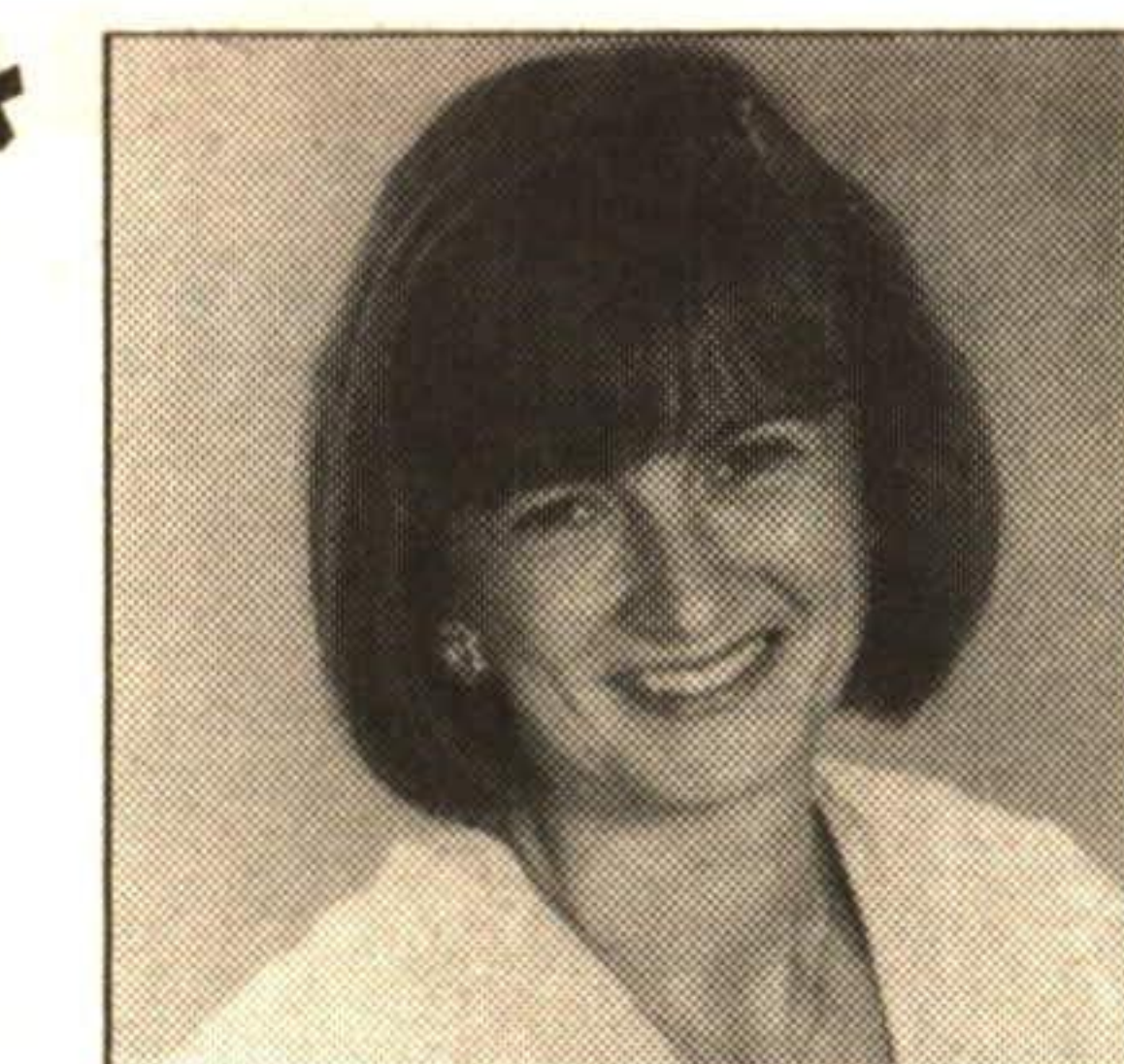
**877-5165 874-3040**

Tor.

**833-9714 873-0655**

Erin

Res.



**MARTHA SUMMERS**  
Sales Representative\*



**ERAMOSA - SUPERB 24 ACRES**  
**\$329,000**

Large principle rooms, overlooking springfed pond. Greenhouse, workshop, meadow and bush. 93-2-305



**LOOK AGAIN IT'S ALL HERE!**

10 acres - superb hardwood bush, springfed pond and rolling lawns. Bright and spacious executive home with 2 fireplaces, 4 bedrooms, hardwood floors and more! Located south of Erin Village. 93-2-339



**COUNTRY CLASSIC**

5 fireplaces, 2 storey atrium, 80 acres with pond, stream, bush and meadow. A bank barn completes the picture. Ultimate country living. 93-2-332



**SUPER STARTER ON QUIET STREET**

Bright eat-in kitchen, spacious living room and dining room. The pool is ready and waiting. \$129,000. 93-2-358



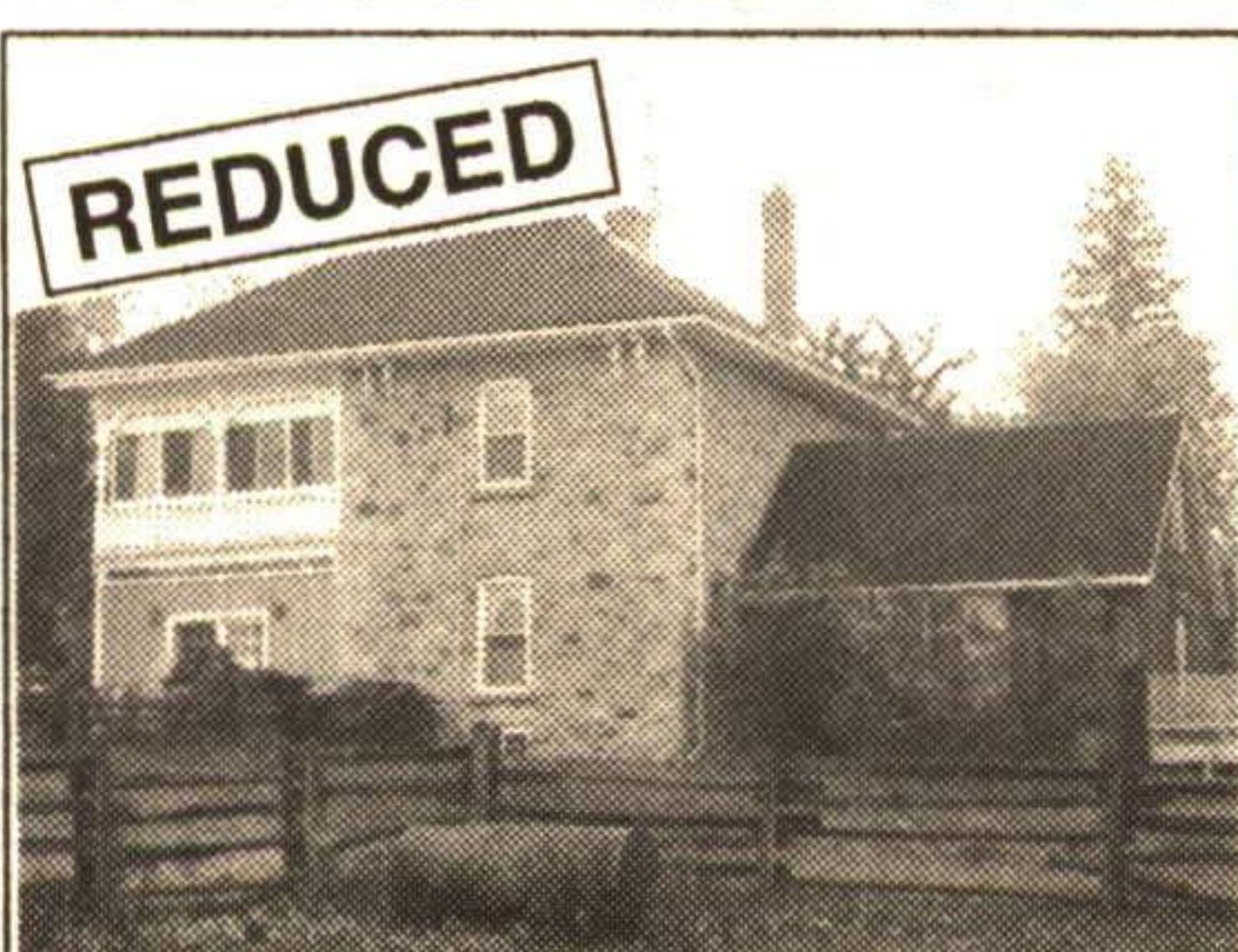
**GEORGE-TOWN INCOME PRODUCING**  
**\$319,000**

Well maintained in good location. Separate large 2 car garage, plenty of parking. Adjacent corner lot available at \$99,900. 93-2-266



**COUNTRY VALUE 3.3 ACRES**

300 feet frontage on paved road. Open concept, vaulted ceilings, sunroom, large bedrooms with walkouts, full ensuite, main floor laundry. One level living south of Erin Village. \$178,500. 93-2-260



**ERIN 84 ACRE HORSE FARM**  
**\$519,000**

Includes large century stone farmhouse, 38 box stall and a super indoor arena. Paddocks, springfed pond, stream and fields complete the setting. 92-2-485



**ERIN 5 ACRES**  
**\$239,900**

Superb hardwood bush for walking or riding. Well maintained home and barn in move-in condition. Hardwood floors. Great location. 92-2-459



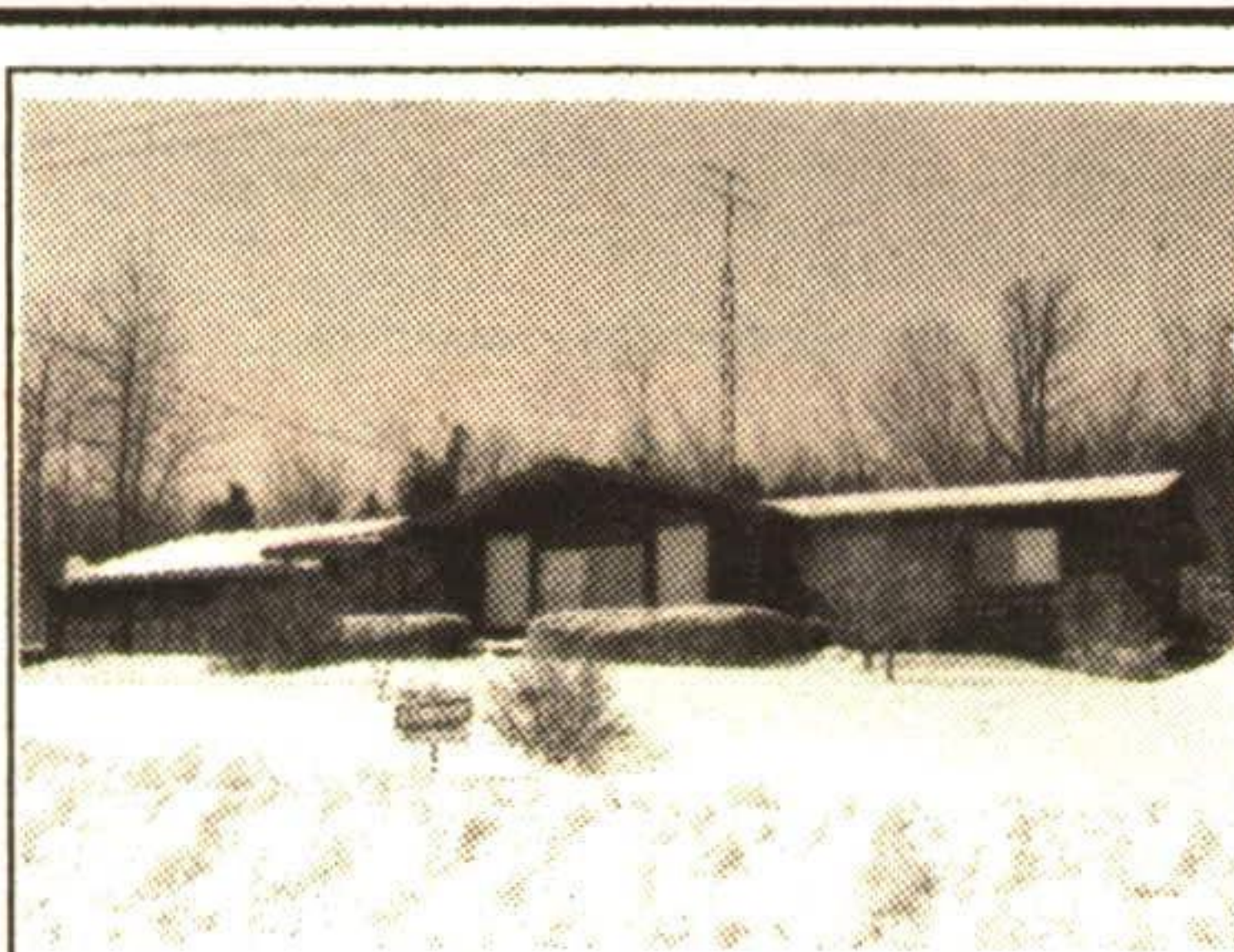
**ERIN 10 ACRES**  
**\$249,000**

Good location, 3 bedrooms, open concept with lovely views of property. Finished rec room. 24 x 40 barn or workshop. 92-2-275



**SUPERB CALEDON EXECUTIVE**

A must to see inside, spacious and gracious with hardwood floors, 25' dining room with fireplace, 4 bedrooms and a great country kitchen. A 20 acre wooded wonderland. 93-2-147



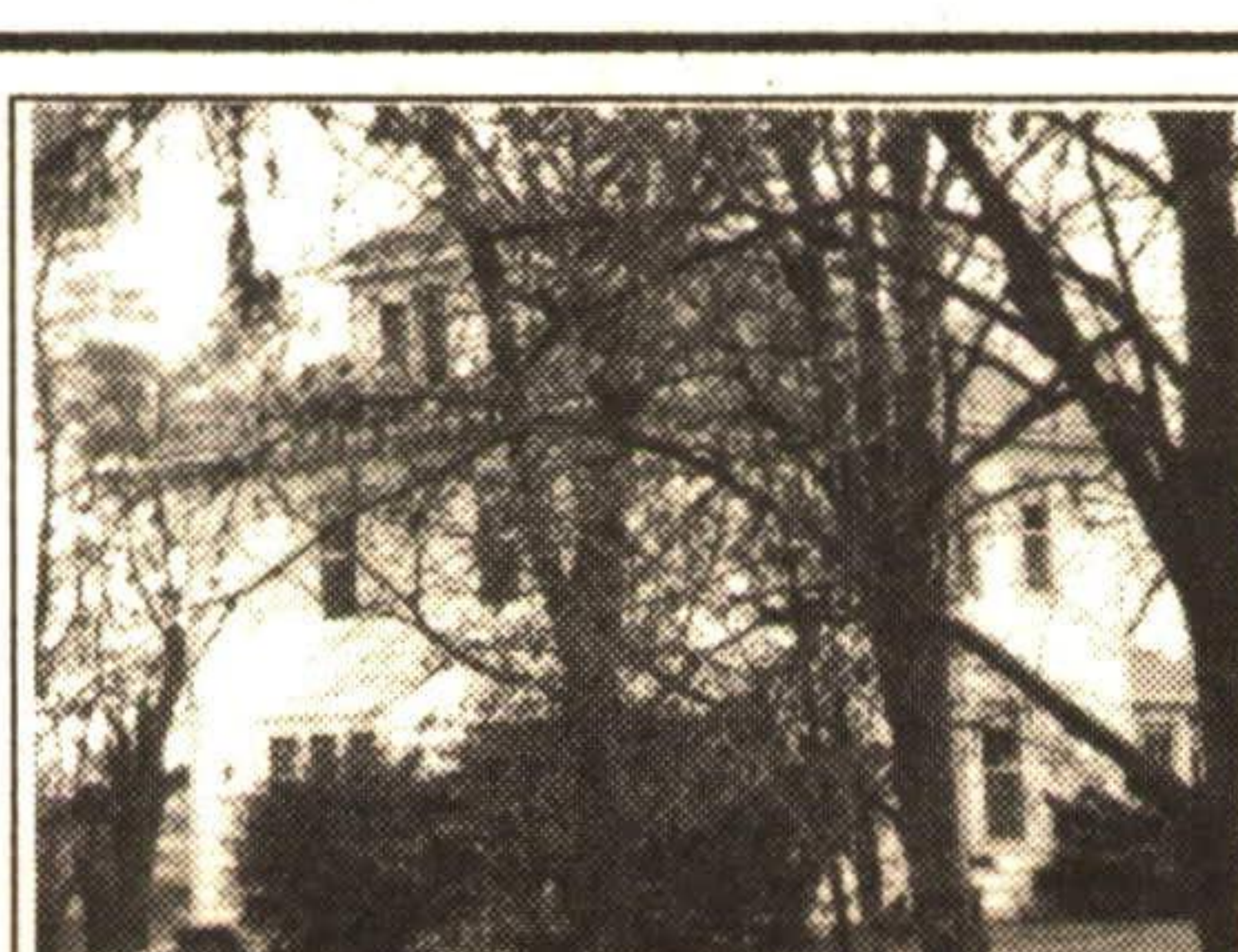
**HILLSBURGH DEAD END STREET**  
**\$199,000**

Spacious, open concept, 3+ bedrooms, large country kitchen, heated workshop plus 2 car garage. Great for a car buff! 93-2-212



**CABINET MAKERS LOOK AGAIN**

You can have it all - executive home plus insulated attached workshop with class. There is even room for your nanny in the finished loft. Cheltenham area. 93-2-195



**CALEDON REDUCED**  
**\$244,900**

Backs onto a ravine. Bright and spacious, bleached oak kitchen, hardwood floors, finished loft. 92-2-495



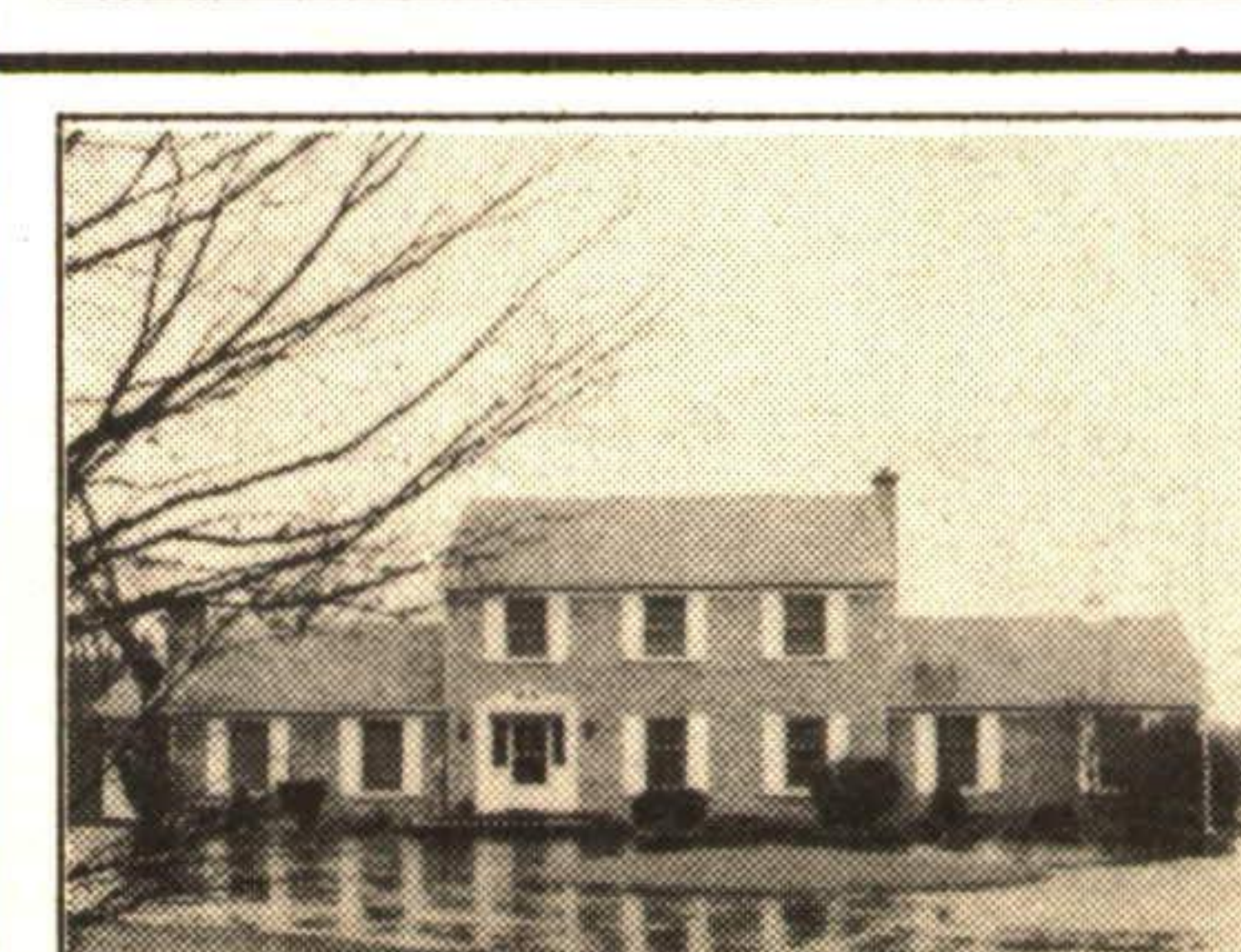
**GEORGETOWN STARTER**  
**\$157,000**

339' deep, mature lot. High ceilings, walkout from dining room to yard, eat-in kitchen, 3 bedrooms. 93-2-225



**FABULOUS 100' RAVINE LOT**  
**\$149,000**

Upgraded with new kitchen with ceramics, new windows, upgraded bathroom with jacuzzi. Detached garage. What a great start. 93-2-322



**EXECUTIVE REQUIRED**

29 private acres with lovely views over field towards hardwood bush. Cedar sunroom, hot tub, large deck plus 40 x 60 outbuilding. 93-2-347