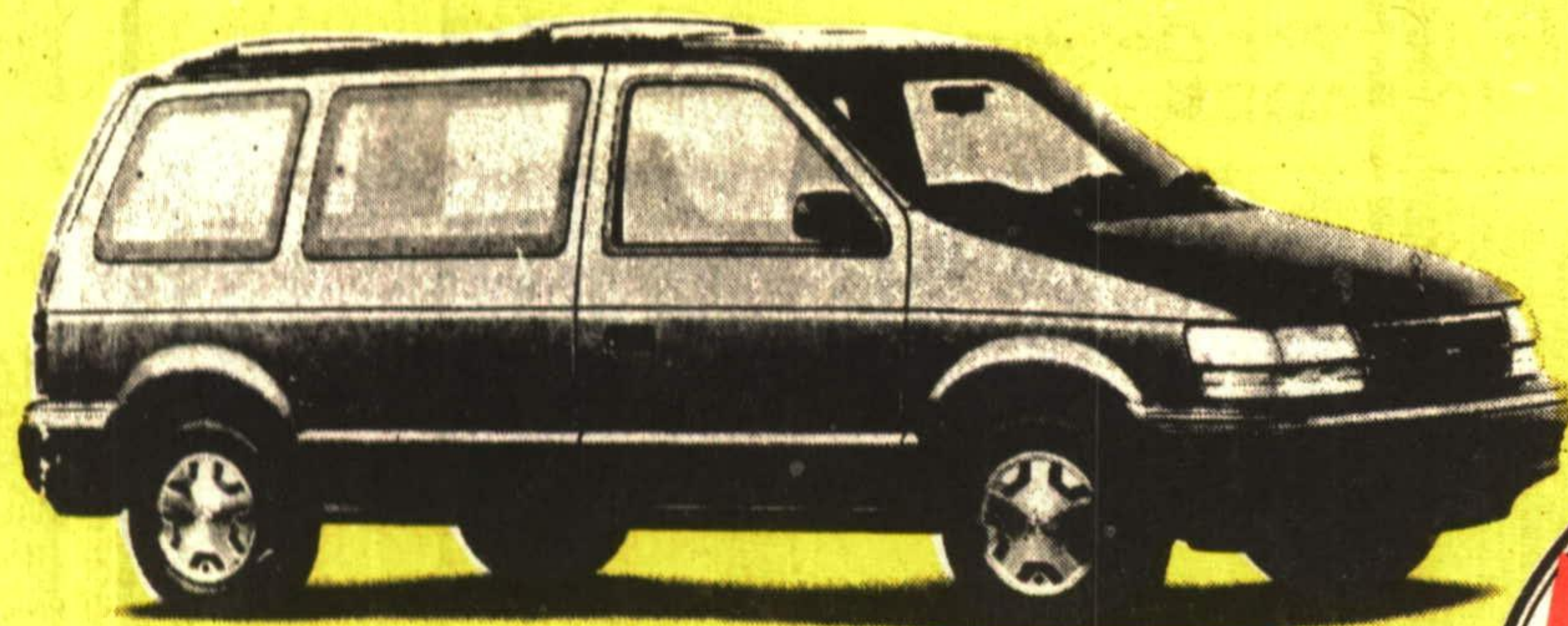


*Introducing*

*The All New* **GEORGETOWN CHRYSLER 1993 LTD.**

**CHRYSLER'S #1 SALES EVENT** *is all about you*

**1993 DODGE CARAVAN OR PLYMOUTH VOYAGER**



- Standard driver's side air bag
- 7 passenger seating
- Air Conditioning
- Auto transmission
- 3.0 litre V6 engine
- Front wheel drive
- Luggage Rack
- AM/FM Stereo
- Convenience light package



*As Low As*  
**5.9%** Financing  
*Cashbacks Up To*  
**\$1500**

**\$16,293\***  
 LEASE PRICE  
**\$269\*\***/mo.

**\$9,993\***  
 LEASE PRICE  
**\$179\*\***/mo.

**1993 DODGE SHADOW OR PLYMOUTH SUNDANCE**

- Standard driver's side bag
- Floor Mats
- Air Conditioning
- Auto transmission
- Centre Console
- Front wheel drive
- Tinted Glass
- AM/FM Stereo
- Convenience light package Pkg. #22D

**OVER 20  
 TOTALLY RECONDITIONED USED VEHICLES  
 TO CHOOSE FROM**

**INCLUDING 6 1993 GRAND VOYAGEURS SE'S**  
 LOADED WITH 3.3 LITRE, V6, AIR, CASSETTE, CRUISE, TILT, 7 PASSENGER SEATING,  
 BALANCE OF FACTORY WARRANTY.

**NO FREIGHT, NO AIR TAX, NO GAS TAX**

**ONLY \$19,885.**

\*Rebate Assigned to Dealer. Frt., Tax & Lic. Extra

\*\* Lease based on 48 month with \$1,000 down OAC. Frt., Tax & Lic. Extra



**GEORGETOWN CHRYSLER (1993) LTD.**

Hwy. #7 (336 GUELPH ST.) GEORGETOWN

877-0149 877-5108 846-1170

CHRYSLER All you have to do is drive one.

