

Business, education leaders join for 'ground-breaking' symposium

On May 19, the Halton Industry Education Council will host a ground-breaking symposium bringing business people and educators together to start the dialogue about common concerns.

The symposium at 1:15 p.m. at the Burlington Holiday Inn will focus on the theme, From School to Work: Managing the Transition. Speakers include:

- Ken Pizer, vice-president of Human Resources, GE Canada Inc., member, Conference Board of Canada's Corporate Council on Education who will talk about the Conference Board's Employability Skills Profile;

- Wayne Roth, director, Labour Market Outlook Unit, Employment and Immigration Canada who will bring an insider's perspective to the issue of occupational projections;

- Dr. John Walsh, associate professor, University of Guelph, author of "Report on Skilled Trades and Career Selection," who will look at the difficulty in filling trade jobs.

Bringing local viewpoints to the event will be a blue-ribbon panel of business and education leaders including Bill Campbell, chairman, Bailey Canada Inc., Doug Barber, president and CEO of Gennum Corporation, Cheryl Craig, Cheryl

Craig Careers, Mary Hofstetter, president, Sheridan College, Graeme Barrett, superintendent of Instructional Services, Halton Board of Education and Cliff Byrnes, director of Education, Halton Roman Catholic School Board. In addition, Mike Farnan, parliamentary assistant to the Minister of Education and Training, will bring education's response.

Also confirmed for the symposium is dinner speaker Rick Spence, editor of Profit Magazine, the magazine for Canadian entrepreneurs. Spence's talk will likely include a sneak preview of his magazine's release of the 100 fastest growing companies in Canada. Spence also serves on the Advisory Council of the Council for Entrepreneurship Education.

Cost of the symposium is \$175. For information call the Halton Industry Education Council at (416) 634-2575 or fax (416) 634-2705.

The Halton Industry Education Council provides a forum for dialogue among business, industry, labor and education. The council operates a Career Centre which provides career awareness programs for students and orientation sessions for parents and businesses. It has served over 6,000 students.



POOL HEATERS



- Season Start-ups
- Safety Checks
- Clean-Outs
- Repairs
- Complete Installations
- Reconditioned Units
- Fully Licensed & Insured

MBH MECHANICAL

PLUMBING • HEATING • AIR CONDITIONING

555 MAIN STREET E, #15 MILTON 875-1145

This newspaper can be recycled!

DINNER AND DANCING
with Live Entertainment

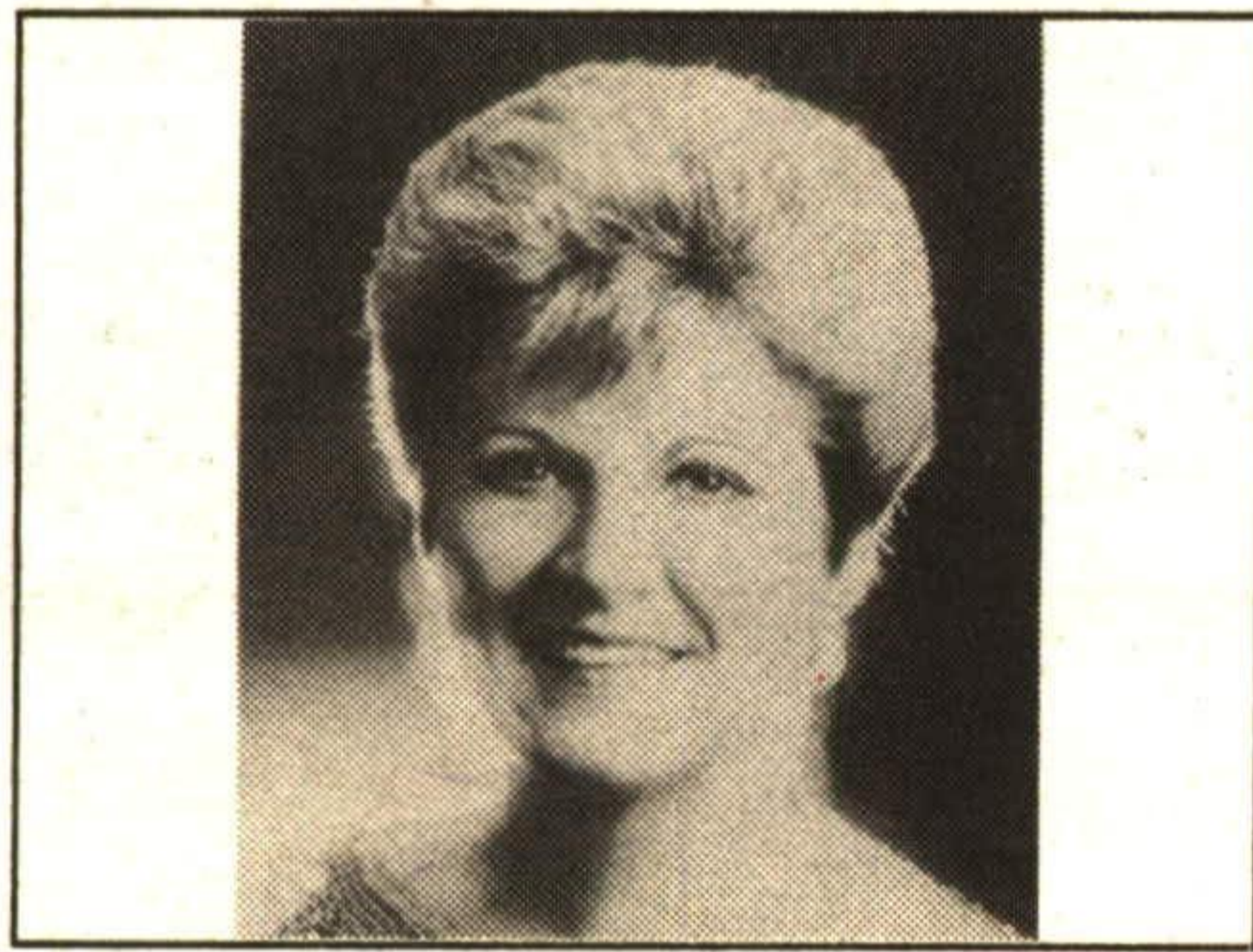
Join us Every Saturday Evening
(Never a Cover Charge)
Our Flowers and Shrubs Throughout
Will be Your First Taste of Spring

Fixed Price Full Course Meals
from \$21.95

Open 7 Days a Week Except Saturday Lunch

Someplace Else
Country Restaurant & Tavern
Mississauga Road, 5 km North of Highway #401

455-8610
Serving the Community for Over 25 Years



GLORIA ELLIOTT

(MINISTERING IN WORD AND SONG)

GEORGETOWN ALLIANCE CHURCH

(8th Line South of Maple Ave.)

SUNDAY, MAY 16, 11 A.M.

NO ADMISSION CHARGE

ALL WELCOME



Discreet Repeats & Rare Findz

An Upscale Ladies Resale Clothing Boutique

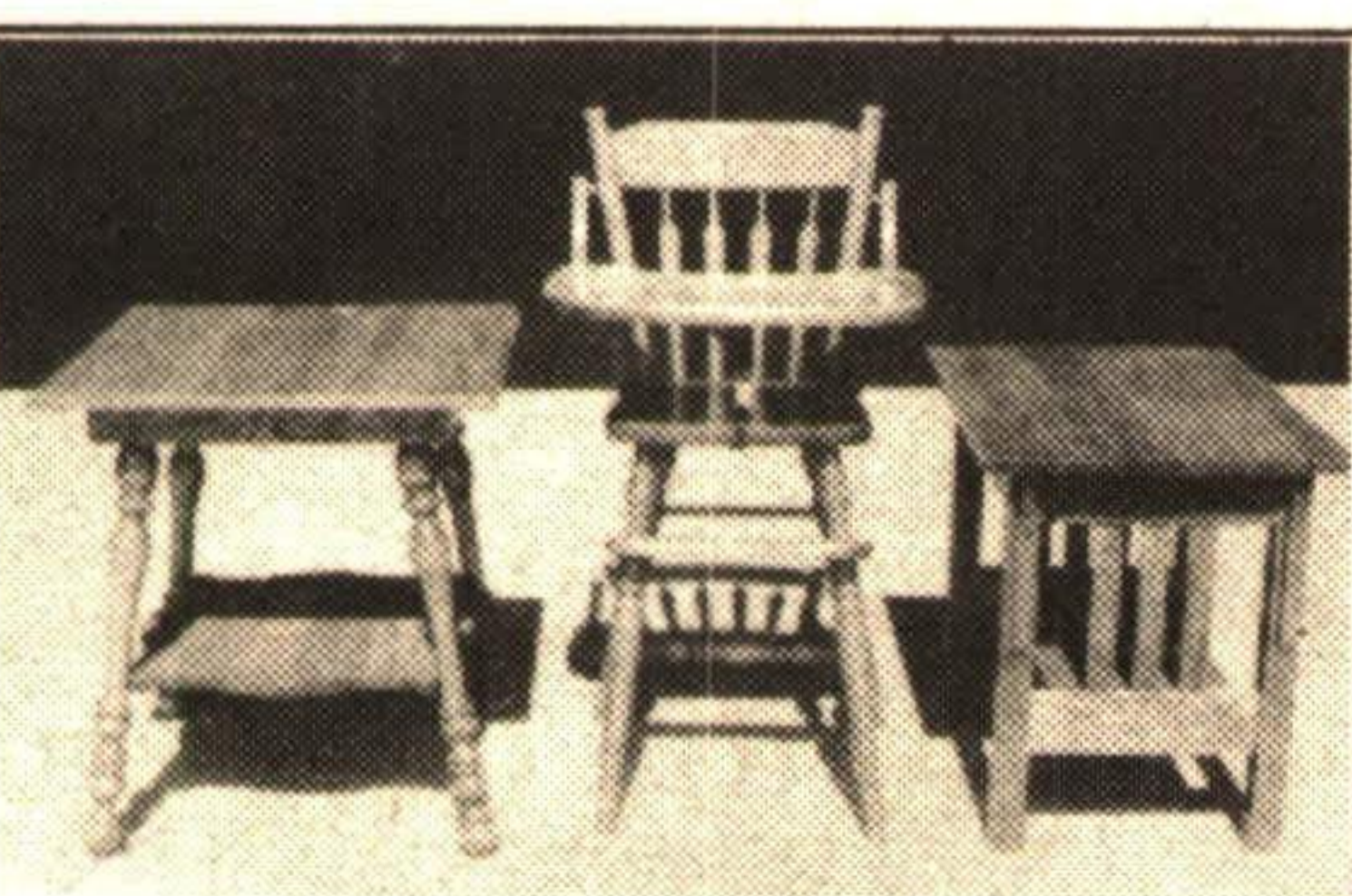
Featuring many current fashions and well-known names. One of a kind wedding party wear, spring formals & some better mens wear. Drop in, our prices and selection will surprise and delight. Consignments are by appointment and the better percentage of the sale goes to you.

OPEN TUESDAY - SUNDAY

927-9303 29 Elizabeth St. Caledon Village

NEW SOLID OAK FURNITURE

TABLES, CHAIRS, CABINETS, HUTCHES AND MORE



available at

HUME'S AUCTION FARM

9313 - 4th Line, Milton

Call 878-4878 for more information

ROBINSON'S BIRTHDAY SALE

It's our President's Birthday Sale!
Sale in effect May 15 to 22nd

All vehicles windshield priced!

1993 GMC SAFARI
with \$1150 NO CHARGE OPTION PACKAGE:
• Captain's chairs
• Two-tone paint
• Rally wheels
• Deep tinted glass
• many other features
\$17,995 *WITH CASH BACK APPLIED
\$339 **PER MONTH OVER 48 MONTHS LEASE

1993 BUICK REGAL
FROM UNDER **\$18,888** *
WITH CASHBACK APPLIED **\$349** **36 MONTH LEASE RATE

1993 ASUNA SUNFIRE
1.9% 48 month financing or Low Lease Rate OR **\$2300 CASHBACK**

1993 PONTIAC SUNBIRD
4 cylinder engine
4 wheel anti-lock brakes
Automatic transmission
24 hour roadside assistance
3 year/60,000 km No Deductible GM TOTAL™ warranty and more
\$199 *PER MONTH
36 MONTH LEASE including no-charge air

1993 PONTIAC TRANS SPORT
from **2.9%** 12 months
3.9% 24 months LEASE
4.9% 36 months OR
5.9% 48 months FINANCE
\$2000 CASH BACK

ROBINSON
PONTIAC-BUICK-ASUNA-GMC
875 Woodlawn Rd. W. In The Guelph Auto Mall K-W & CAMBRIDGE
821-0520 653-6007

ROBINSON'S BIRTHDAY SALE