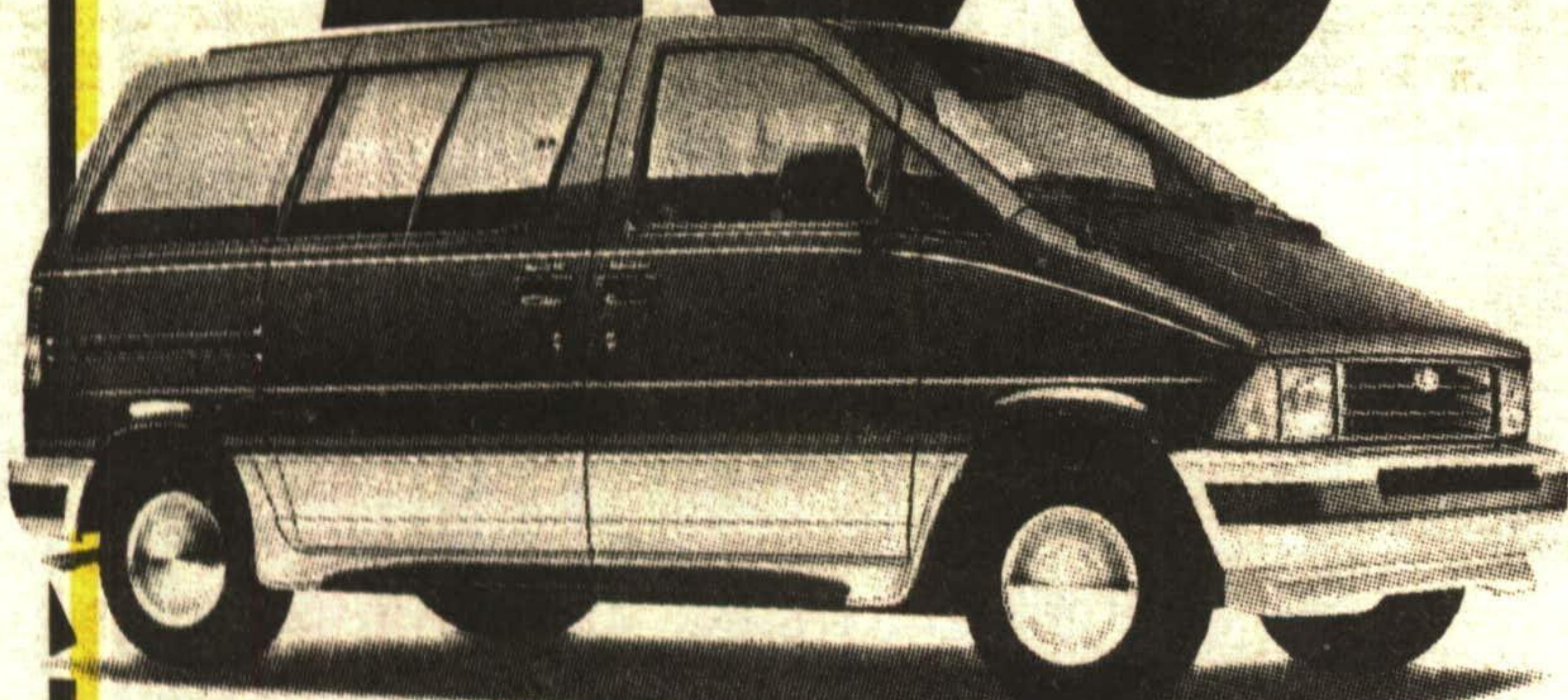


# DRIVE A LEADER.



FORD MAKES 6 OF THE 12 BEST-SELLING VEHICLES IN NORTH AMERICA:

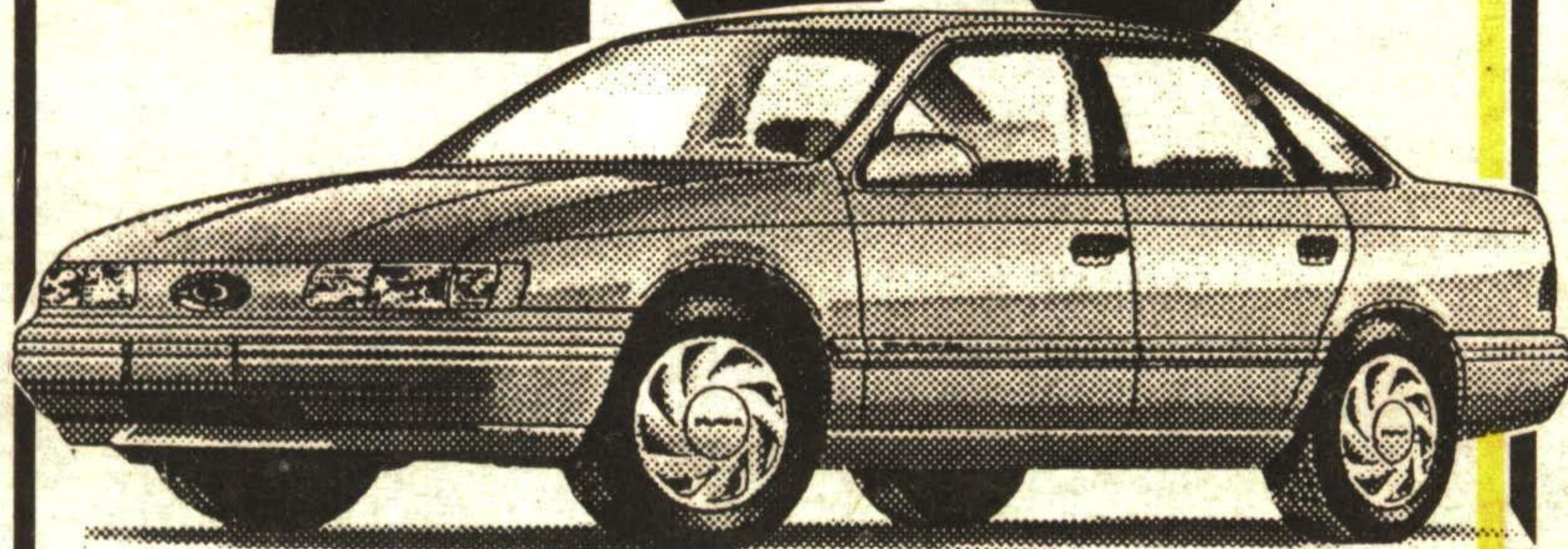
## \$299\*



### '93 AEROSTAR

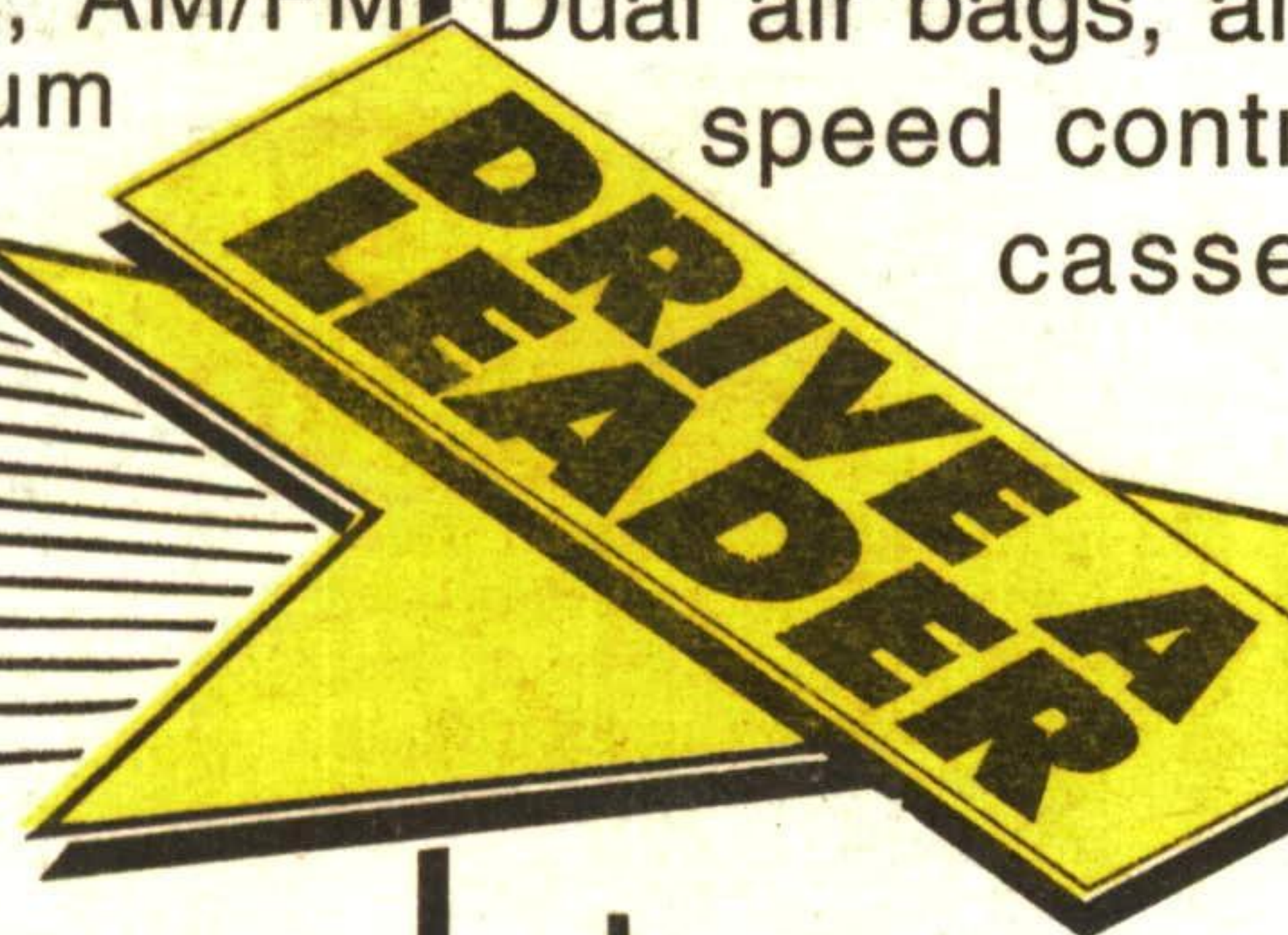
Air bag, air conditioning, automatic, AM/FM stereo, captain chairs, aluminum wheels, running boards, rear wiper/washer, rear anti-lock brakes, tu-tone paint, convenience group, more...

## \$299\*

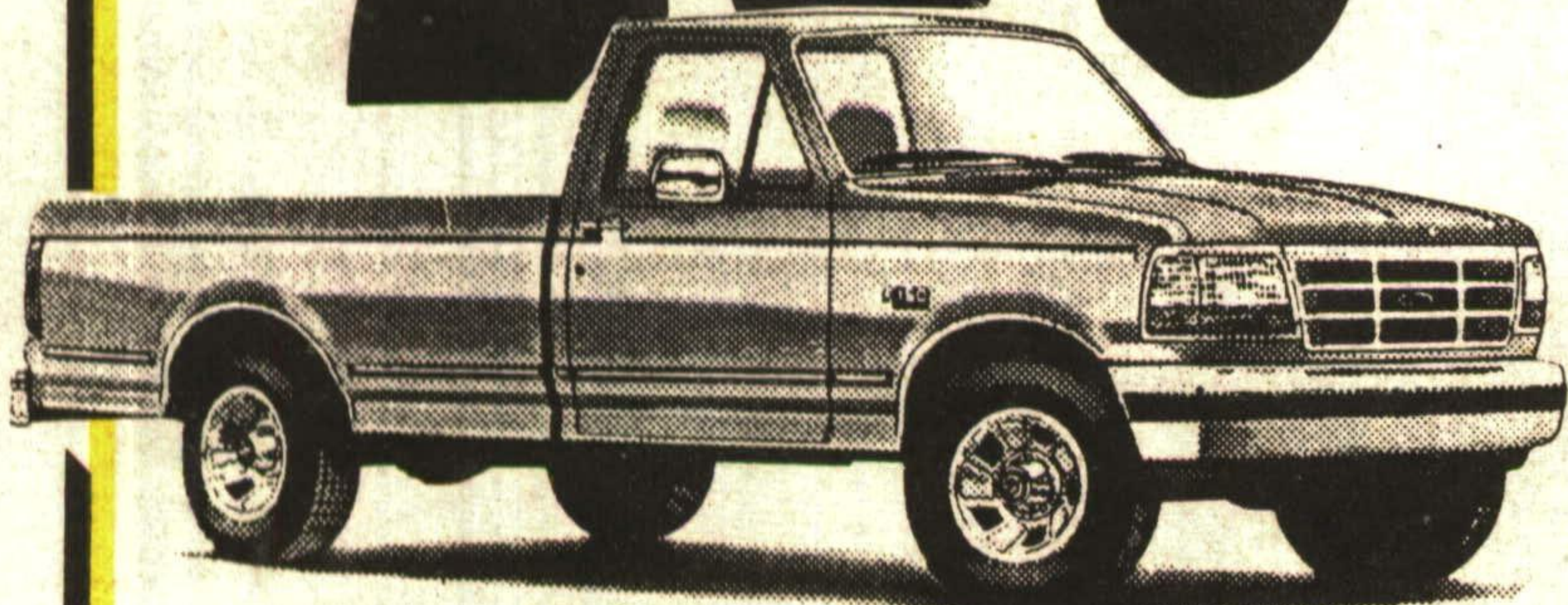


### '93 TAURUS GL

Dual air bags, air conditioning, automatic, speed control, tilt steering, AM/FM cassette, light group, floor mats, interval wipers, more...



## \$299\*



### '93 F150 XLT

5 Litre, V8 engine, cruise/tilt, automatic, air conditioning, AM/FM cassette, heavy duty suspension, chrome wheels, plus more...

## \$299\*



### '93 RANGER SUPER CAB XLT

V6, captain chairs, console, air conditioning, aluminum wheels, AM/FM cassette, power mirrors, sliding rear window, tu-tone paint, tilt steering, speed control, more...

\*24 month RCL, OAC. 1st payment plus refundable security deposit and down payment (Aerostar \$1000, Ranger \$1500, Taurus/F Series \$2000). Freight, taxes, license extra. Some mileage conditions may apply. New vehicles only. Limited time offer.

# CAPITAL FORD

HWY. #7, GEORGETOWN  
873-1626

NUMBER  
1  
In Customer Satisfaction

## GREEN THUMB GARDENING



By CHRISTINE COLE  
VEGETABLE GARDENING

### Hot Tips for a Cool Crop

\* If you forget to protect your plants on a night that frost occurs you can save them from damage by watering their foliage before the sun melts off the frost.

\* Before planting large seeded vegetables such as peas, beans, and pumpkins - soak them overnight in a little water. This hastens their germination.

\* To prevent cutworm damage on your broccoli, cauliflower and other brassicas place a paper cup that has the bottom removed around the stem of the plant. Push it into the soil about 1 inch.

\* To produce white curds on cauliflower, wrap the outer leaves around the head when the small inner leaves no longer protect the developing head from the sun. Tie them in place with twine.

\* Pepper plants grow and produce a better crop in lean (not too fertile) soil.

\* Potatoes develop a green (inedible) green skin when they are not covered by enough soil.

\* Potatoes and onions store better if they are not washed. Just brush the dirt off and place in cold storage for winter use.

\* Do not plant corn on the west end of the vegetable garden. It will shade other vegetable plants.

\* Most vegetables require 6-8 hours of full sun.

\* Avoid walking or working amongst the bean plants when their foliage is moist. This promotes the spread of diseases.

\* The germination of spinach drops considerably when the soil temperature reaches or exceeds 16°C. Plant it during late April.

\* Tomatoes are one of the few plants that can be planted with part of their stem underground. Roots will form on the stem.

\* Lettuce, spinach, broccoli and cauliflower will bolt (go to seed) if they mature during the heat of the summer.

\* Rotate the location of vegetable in the garden every year.

\* Root crops such as carrots and parsnips will be misshapen if planted too close and/or you have many stones in your soil.

Each week Christine Cole of Tuitman's Garden Centre and Landscaping, Highway 25, 1 mile south of Acton, 853-2480, will be presenting helpful tips and information to assist you in creating your garden show-place!

TUITMAN'S GARDEN CENTRE  
ACTON  
853-2480