

A DIFFERENT APPROACH

THE BETTER WAY DONNA RAE*



*Sales Representative

WANTED IMMEDIATELY

WITH CLOSING OF YOUR CHOICE

DETACHED FIRST TIME

BUYER HOME

\$120,000-\$139,000

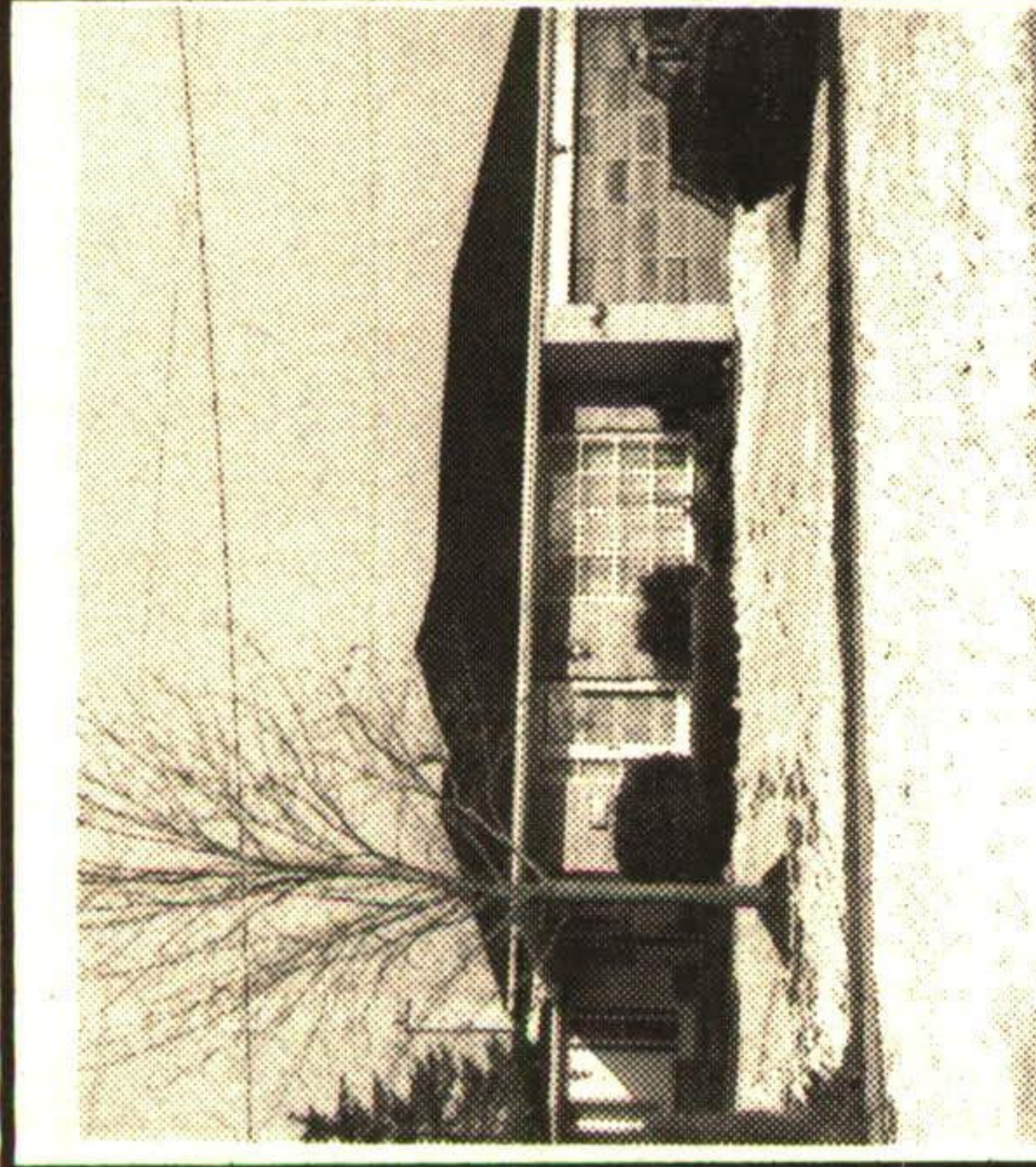
CALL NOW, I HAVE CASH BUYERS!



CUSTOM BUILT

Over 2000 sq. ft. Large main floor family room, main floor laundry. Central air, central vac, intercom. Almost finished rec room, 3 washrooms, 4 bedrooms, large rooms. Gorgeous 1 acre property. Wonderful neighbourhood. RM280-92

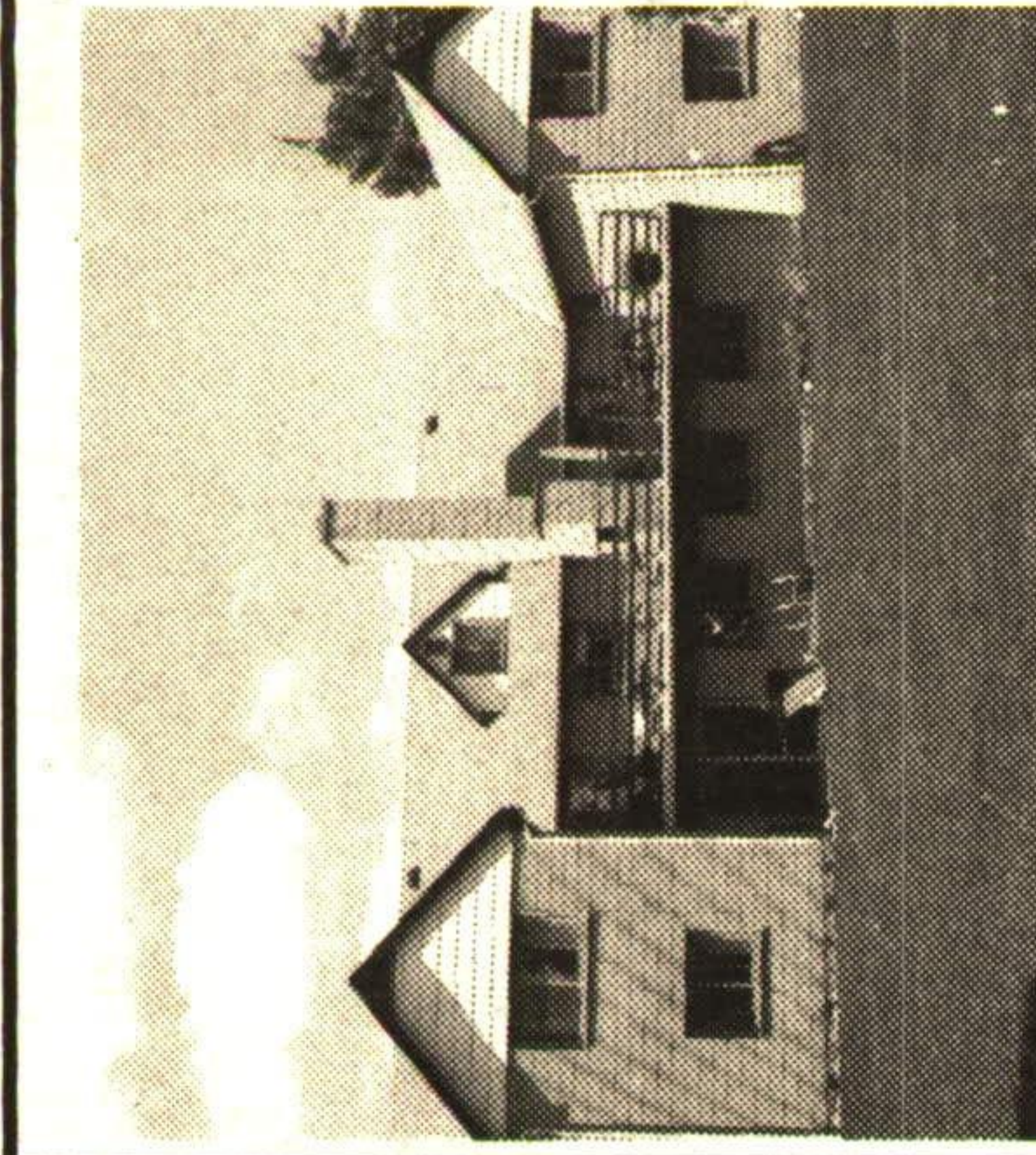
Donna Rae* 877-5211



GORGEOUS BACKSPLIT ON QUIET RAVINE PROPERTY

Lovely sunroom off kitchen. Oak kitchen, ceramics and plush carpet. Inground pool, 4th bedroom in basement and washroom. This home shows 10++++. Move in condition. Garage door opener, hardwood under broadloom throughout. RM344-92

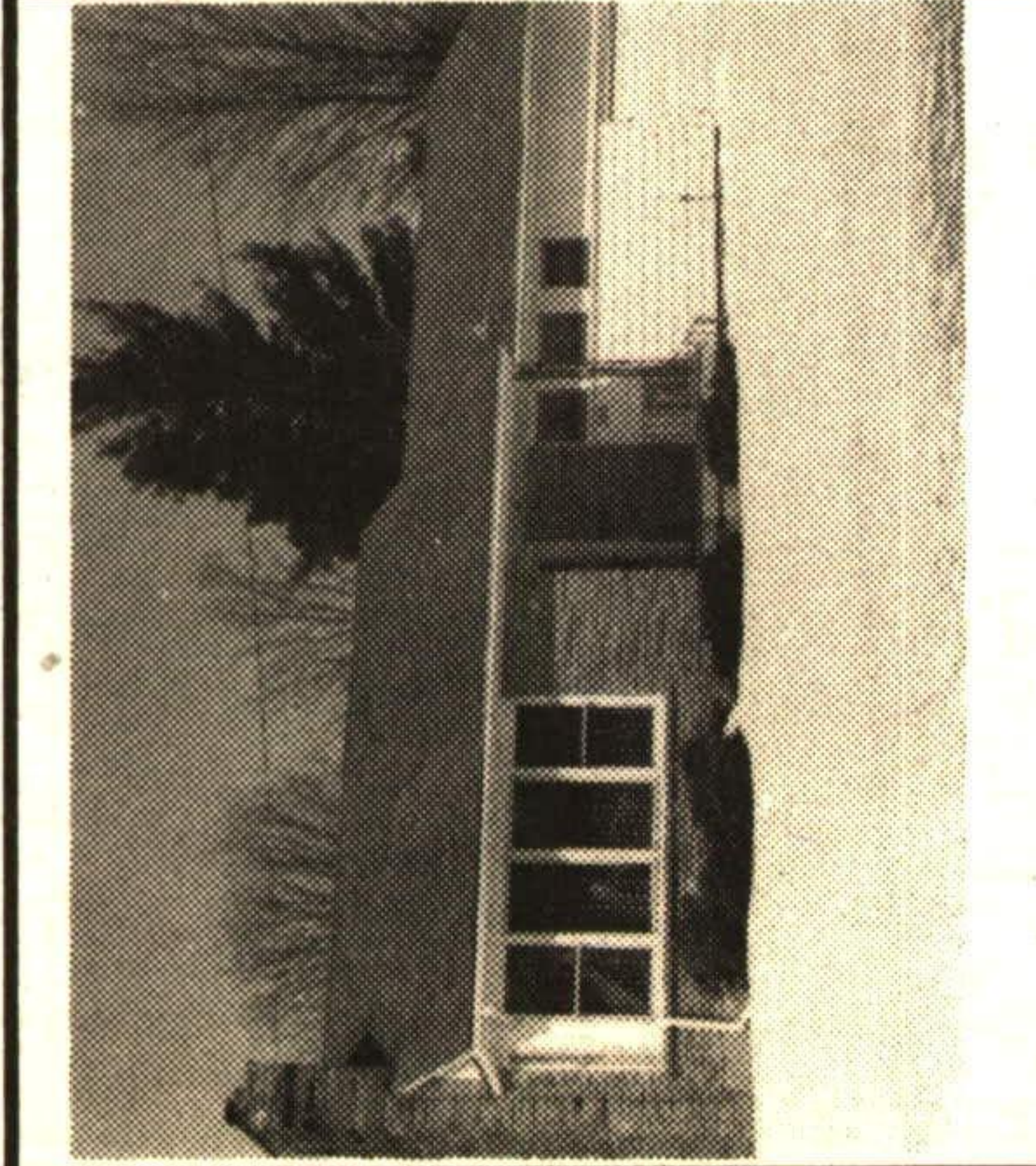
Donna Rae* 877-5211



GORGEOUS COUNTRY CHARM

Tree lined, private, massive and priced at \$389,900. One of a kind offering 2 in-law suites. A gorgeous home. Immaculate and "Pride of Ownership". Move in condition. RM219-92

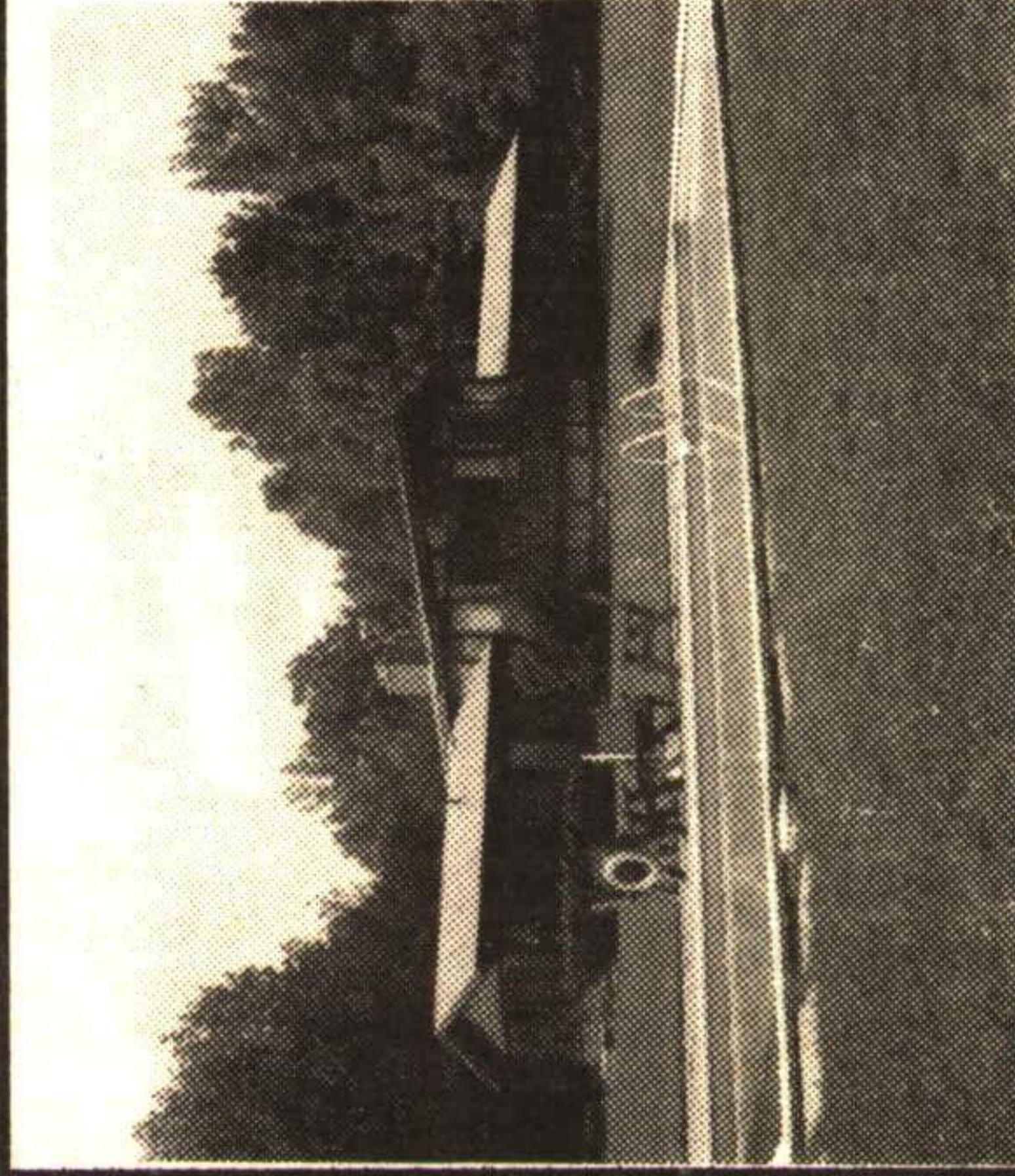
Donna Rae* 877-5211



PARK LOCATION

Walk to downtown. This home shows 10++++. It's immaculate, charming and move in condition. Hardwood floors, bright new eat-in kitchen. \$189,900. RM094-93

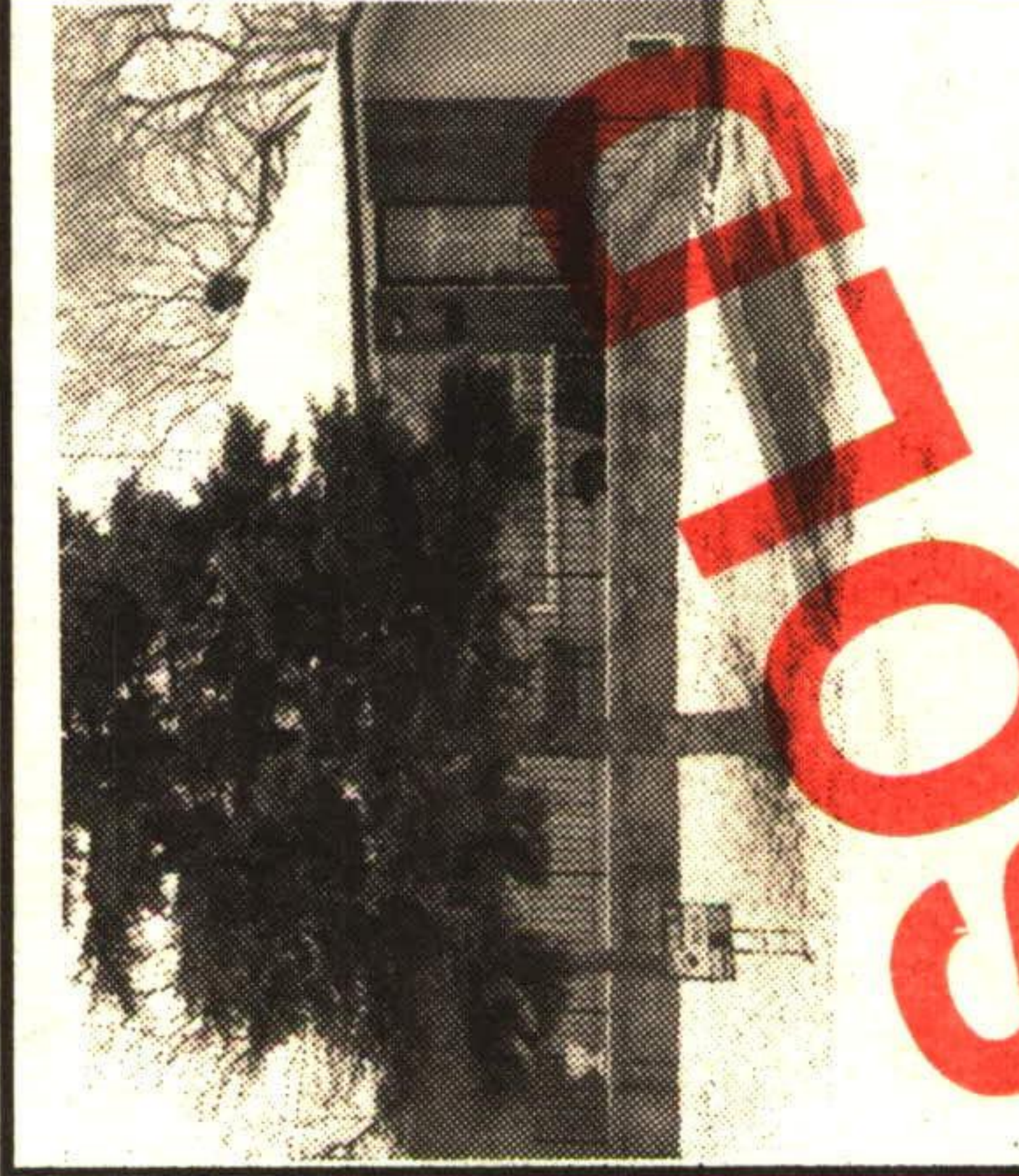
Donna Rae* 877-5211



UNBELIEVABLE ...

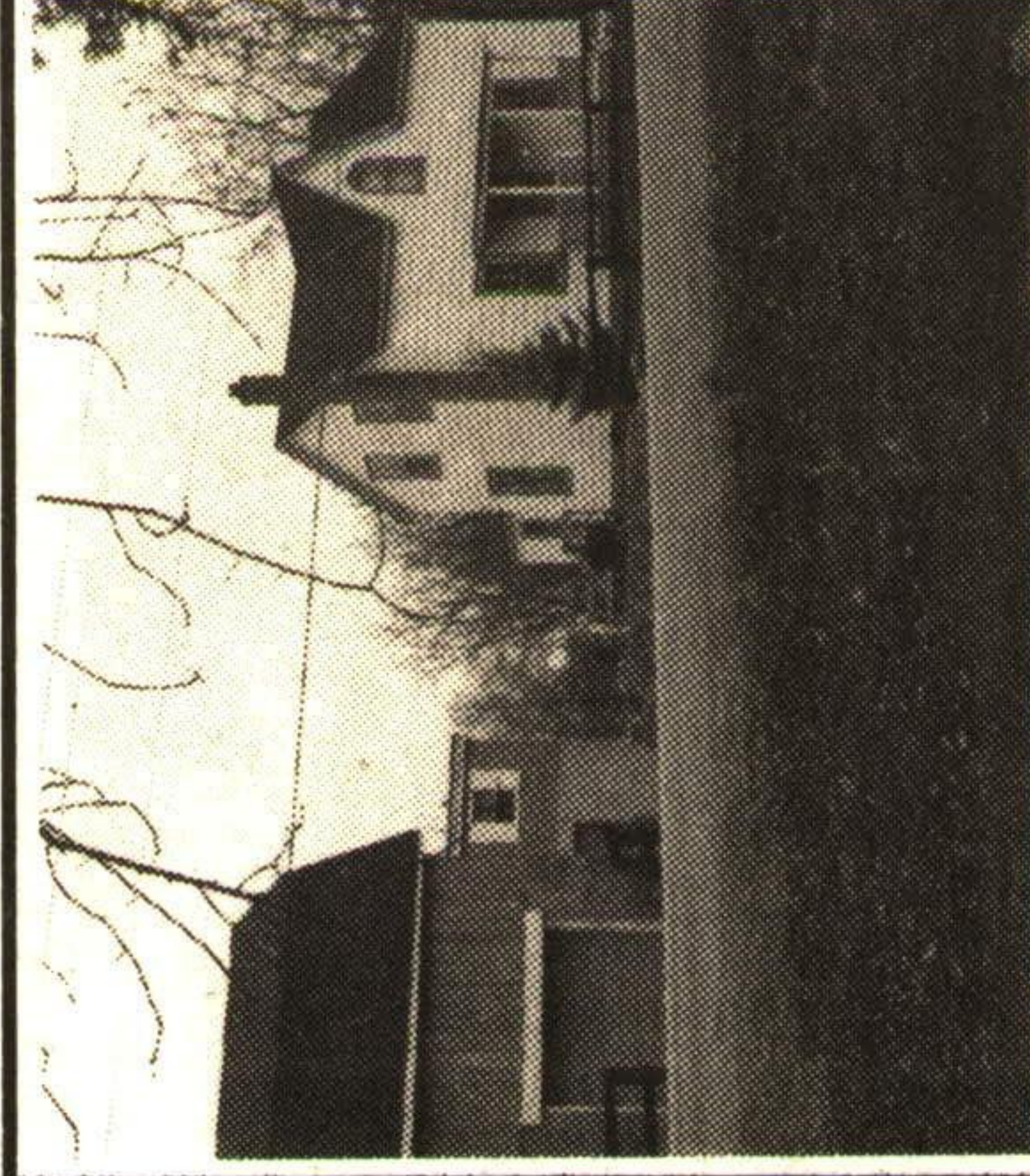
8 acre property. Trees, pool, privacy, tranquility, birds and deers. Sound great? You bet it is! Over 2000 sq. ft. chalet style home. Cathedral ceiling, large rooms, 2 washrooms and much much more. \$289,900. RM223-92

Donna Rae* 877-5211



SOLD THE BETTER WAY RAE* DONNA RAE

RM388-92

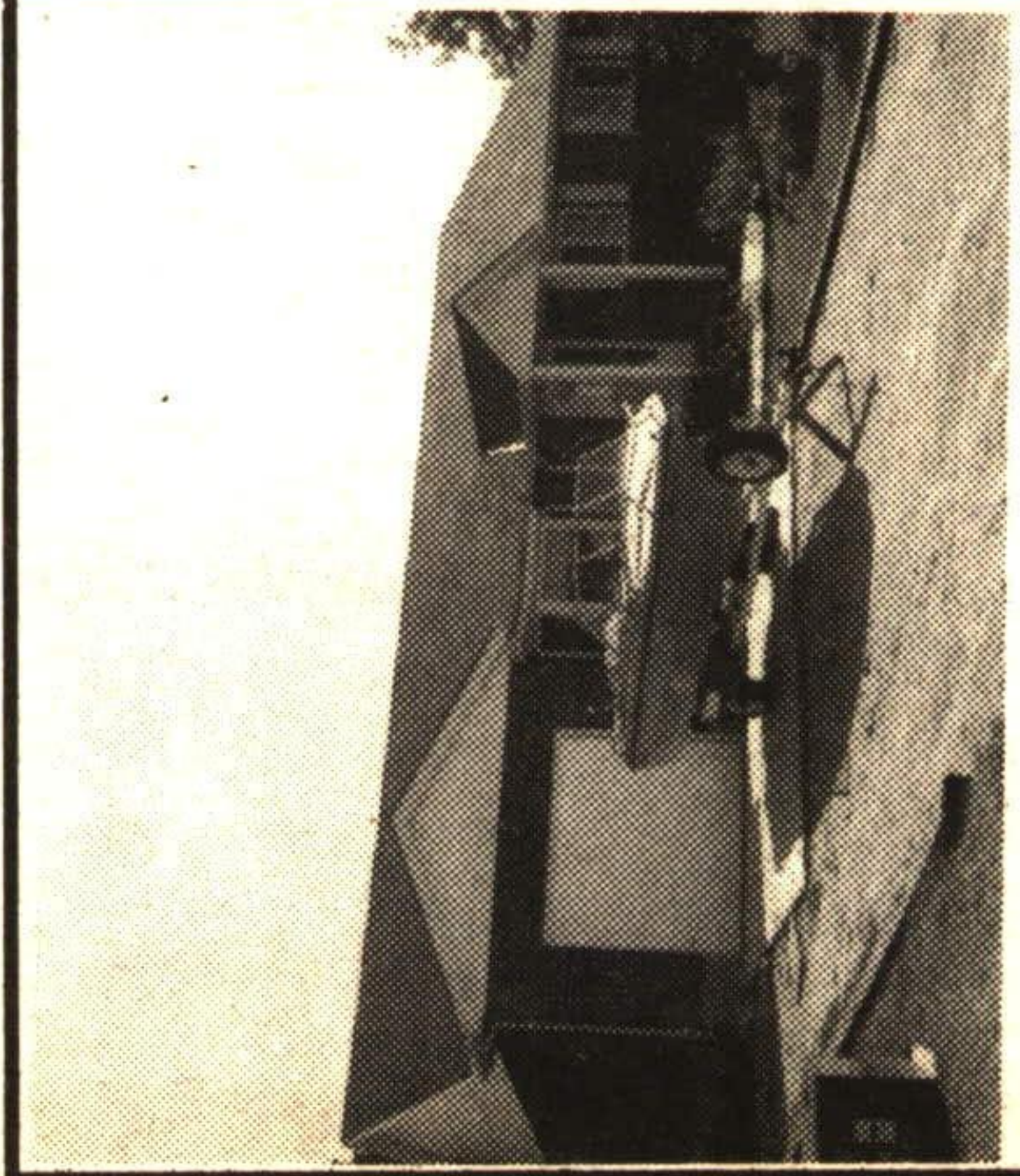


4 SOURCES BALLINAFAD COMMERCIAL

- ★ House or Tea Room
- ★ Extra income Historical Barn
- ★ Antiques or Crafts Shop for
- ★ Mechanics - Zoned Commercial
- ★ In-law suite over shop
- ★ Rapidly Growing Community

RM277-92

Donna Rae* 877-5211



VENDOR SAYS SELL NOW

\$185,000 for an approximately 2000 sq. ft. bungalow. Oak kitchen with breakfast area. Large family room with fireplace. Two washrooms, 3rd roughed in basement. Master with ensuite. Huge huge yard. CALL NOW for specific details. RM265-92

Donna Rae* 877-5211

CUT OUT NOW

NO OBLIGATION

NO PRESSURE

FREE

MARKET

ANALYSIS

OF YOUR HOME

CALL NOW

**877-5211 OFFICE
874-3051 TORONTO
(519) 833-7117 ERIN**

RE/MAX SUBURBAN (91) INC.

