

LOOK

CERTIFIED AND READY TO GO!



1992 TAURUS L

V6, air, automatic power windows, low kms. Stk. #9323

\$14,995



1991 EXPLORER

Sport pkg., air, 4x4, AM/FM cassette, very clean. Stk. #9311

\$17,995



1989 CROWN VICTORIA

Loaded. Loaded. Loaded. Only 66,000 kms. Very desirable. Stk. #9322

\$13,995



1988 AEROSTAR XL

V6, air, power locks & windows, automatic. Stk. #92124

\$9,995



1991 ESCORT LX

Air, auto, AM/FM, power locks. Stk. #92154

\$8,995



1989 F150 PICK UP

Two tone, 5 speed, AM/FM. Stk. #82163A

\$10,295



1989 THUNDERBIRD

3.8 CTR, auto, power locks & windows. Choice of two. Stk. #6300A

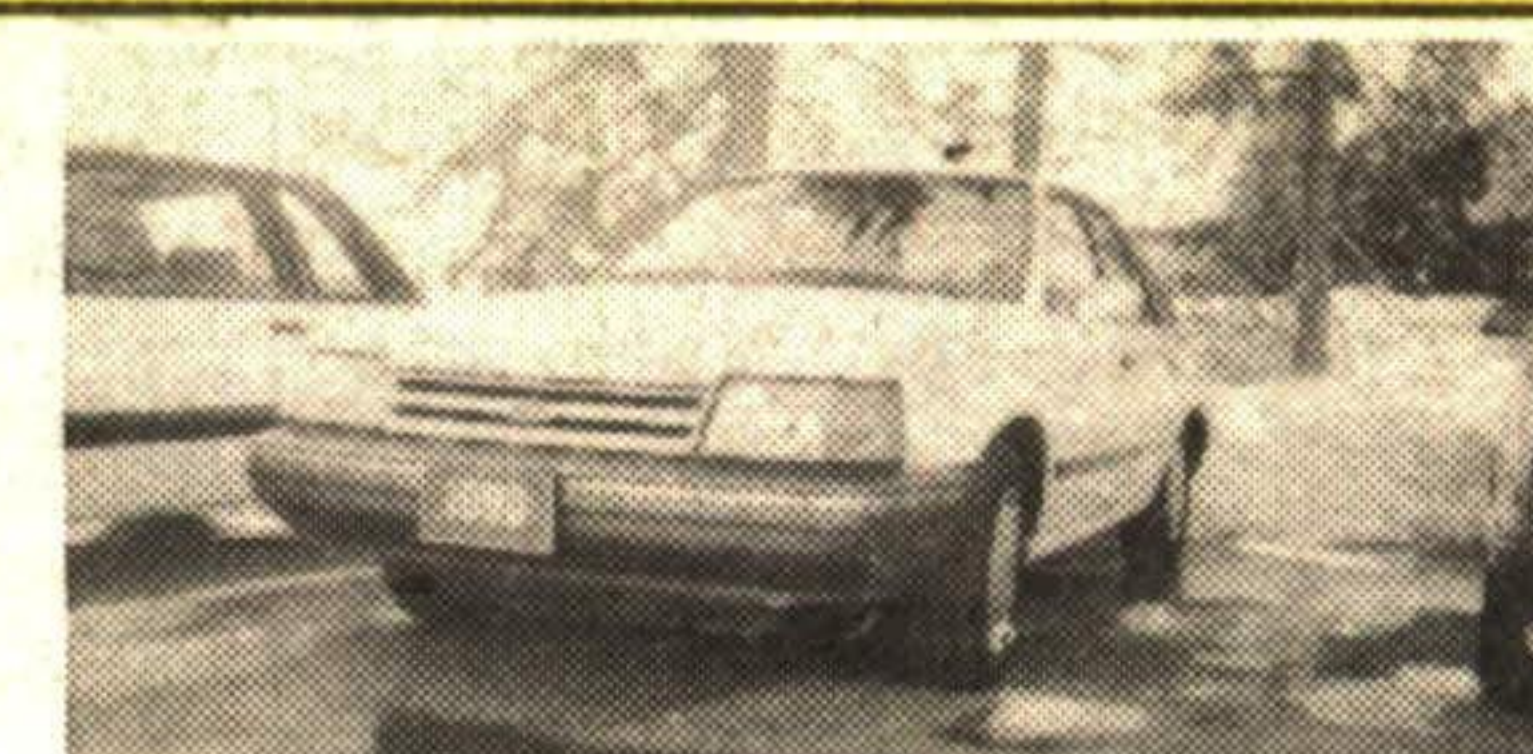
\$10,895



1990 F150 XLT LARIAT

V8, auto, air, power locks & windows, exterior decor pkg. Stk. #9327

\$12,995



1990 ESCORT LX

Air, automatic, AM/FM, 5 dr. hatchback. Stk. #9328

\$7,295



1991 F150 SUPER CAB XLT

V8, air, automatic, AM/FM cassette. Stk. #82184A

\$15,795



1988 COUNTRY SQUIRE WAGON

Loaded with options. Stk. #A8340A

\$7,995



1989 JEEP CHEROKEE LIMITED

4 x 4, air, power windows & locks. A.B.S. Stk. #9326

\$16,995



1989 MUSTANG LX COUPE

Auto, air, power windows & locks. Tilt and cruise. Stk. #91250

\$7,795



1990 TAURUS LX

V6, auto, air, power seats and much, much more. Stk. #9315

\$10,995



1989 MUSTANG LX COUPE

5 speed, sunroof, AM/FM. Stk. #6104A

\$5,295

GREEN THUMB GARDENING



By CHRISTINE COLE

COMBINING COLOURS IN THE GARDEN

We can all view a garden and know if it is pleasing to our eye. But, have you ever wondered why we like it? Some colour schemes seem to work well together while others don't and colour plays an important role in all of this. All colours convey a sense of temperature: warm or cool. You can remember warm colours as those of fire - red, orange, and yellow. Cool colours are the colour of water - blue, green, violet. Beige or tan, black, silver (and sometimes white) are known as neutral colours. These colours blend and co-ordinate the warm and cool coloured plants and flowers.

The trick to all of this is to create a balance with the various colours. The fewer colours that you use the more relaxing it looks. But be careful - too much of this could be a bit boring, in the other extreme - too many colours makes a garden appear very busy, or "a riot of colour". A garden with many colours is difficult to focus on since there is too many things fighting for your attention. One technique to unify this kaleidoscope is to make large clumps or drifts of the same colour (they can be the same or different plants, as long as the colour is similar). This physically separates the colours and makes them less overpowering and makes the garden appear more unified. Another effective technique is to separate the warm and cool coloured plants with a neutral coloured plant. A subtle way to tone down bright, vibrant coloured flowers is to put a plant beside it that is a softer shade of that colour. For example, you can tame a bright, canary yellow (Jackmani cinquefoil) by planting a soft yellow petunia around it or a pale yellow "Moonshine" Achillea beside it.

You can use colours for an illusion as well. Warm coloured plants (blooms) seem to look as if they are closer to you while cool colours appear further away. Use this little trick on whole or part of a flower bed - you can make your yard "seem" bigger or cozier and smaller, more balanced and unified all with the use of colour.

There's more to a great garden than putting a few plants in the ground - the best gardens combine colour in an interesting and creative manner.

Each week Christine Cole of Tuitman's Garden Centre and Landscaping, Highway 25, 1 mile south of Acton, 853-2480, will be presenting helpful tips and information to assist you in creating your garden show-place!

TUITMAN'S GARDEN CENTRE
ACTON
853-2480

CAPITAL FORD

HWY. #7, GEORGETOWN
873-1626

NUMBER
1

In Customer Satisfaction