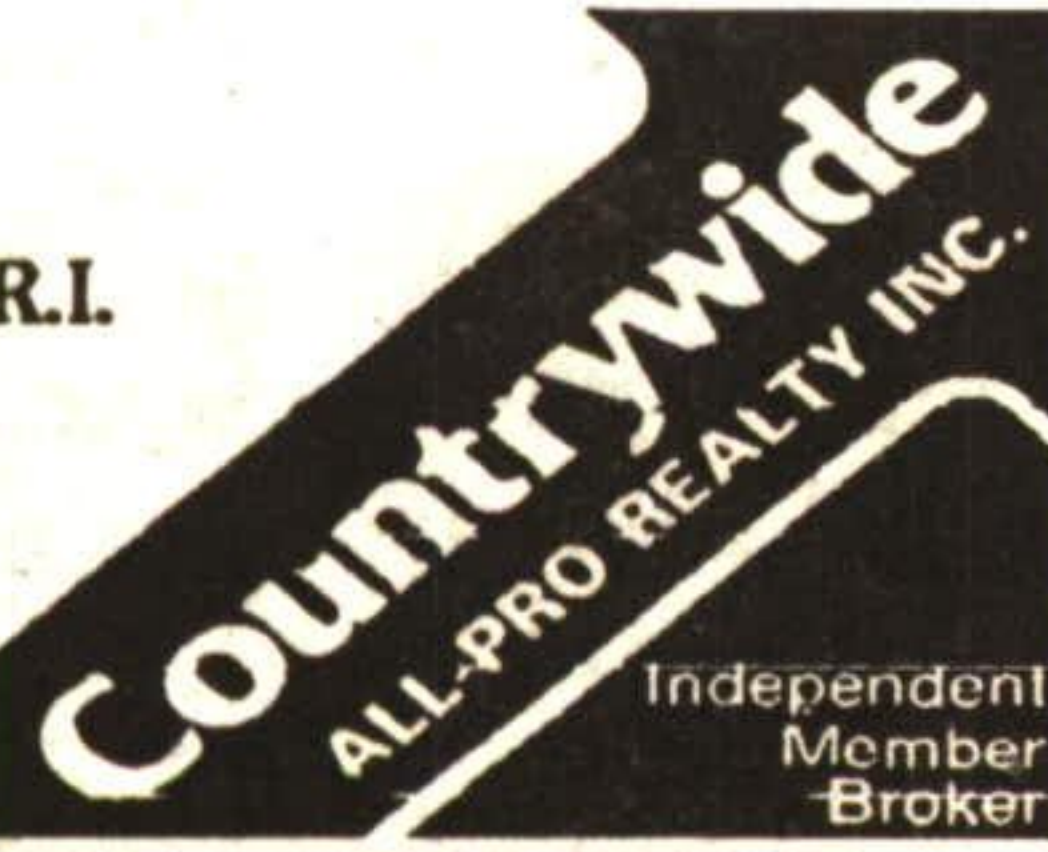


**A LITTLE DOUGH  
WILL DO YOU**

This sidesplit, detached home is located in an area of fine homes. Casual living with all modern conveniences, 3 bedrooms, 2 baths, recreation room & den, lovely kitchen, charming living room, central air conditioning, garage & spacious roofed-over patio leading to large swimming pool.

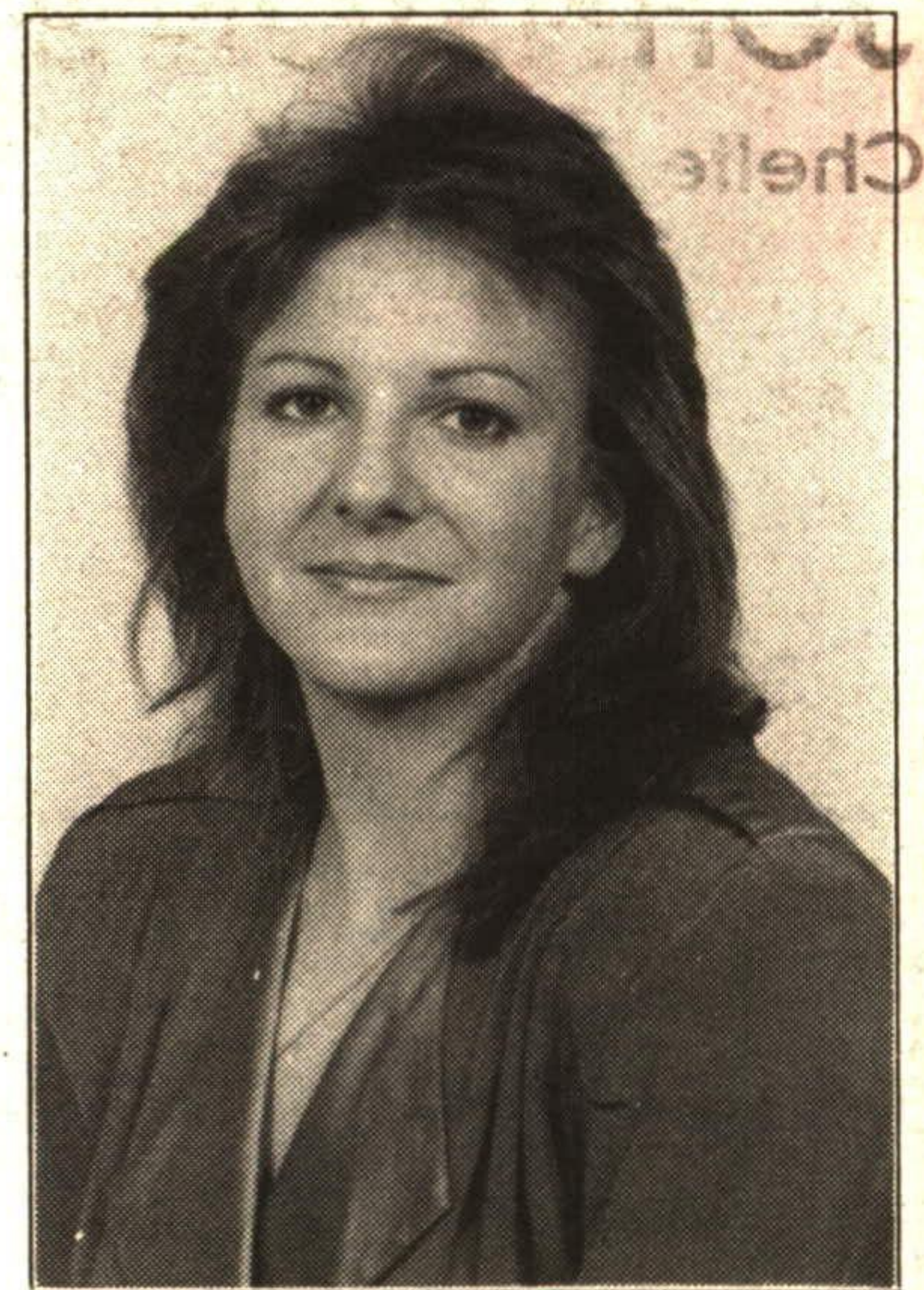
**J. Hector LeBlanc** M.B.A. (RE), LL.B., F.R.I.  
Associate Broker  
**452-7272**  
res. (519) 853-0552



Jim Akers, Manager, Countrywide All-Pro Realty Inc., is pleased to announce that Andrea Skanes, Sales Representative, has joined our fast growing sales staff. Andrea's dedication to service and her abundance of enthusiasm will definitely be an asset in her new challenging career choice.

Andrea invites all of her friends & future clients to drop in & visit our call her at her new office location at 328 Guelph Street, Georgetown.

She will be glad to help you anytime with your real estate needs.



**Andrea Skanes**  
Sales Representative  
Res. (416) 877-9222

**Countrywide All-Pro Realty Inc.**

Georgetown Division  
328 Guelph Street  
**873-3377**



**Countrywide**  
ALL PRO REALTY INC.

...the obvious choice

873-3377  
Tor: 874-3057

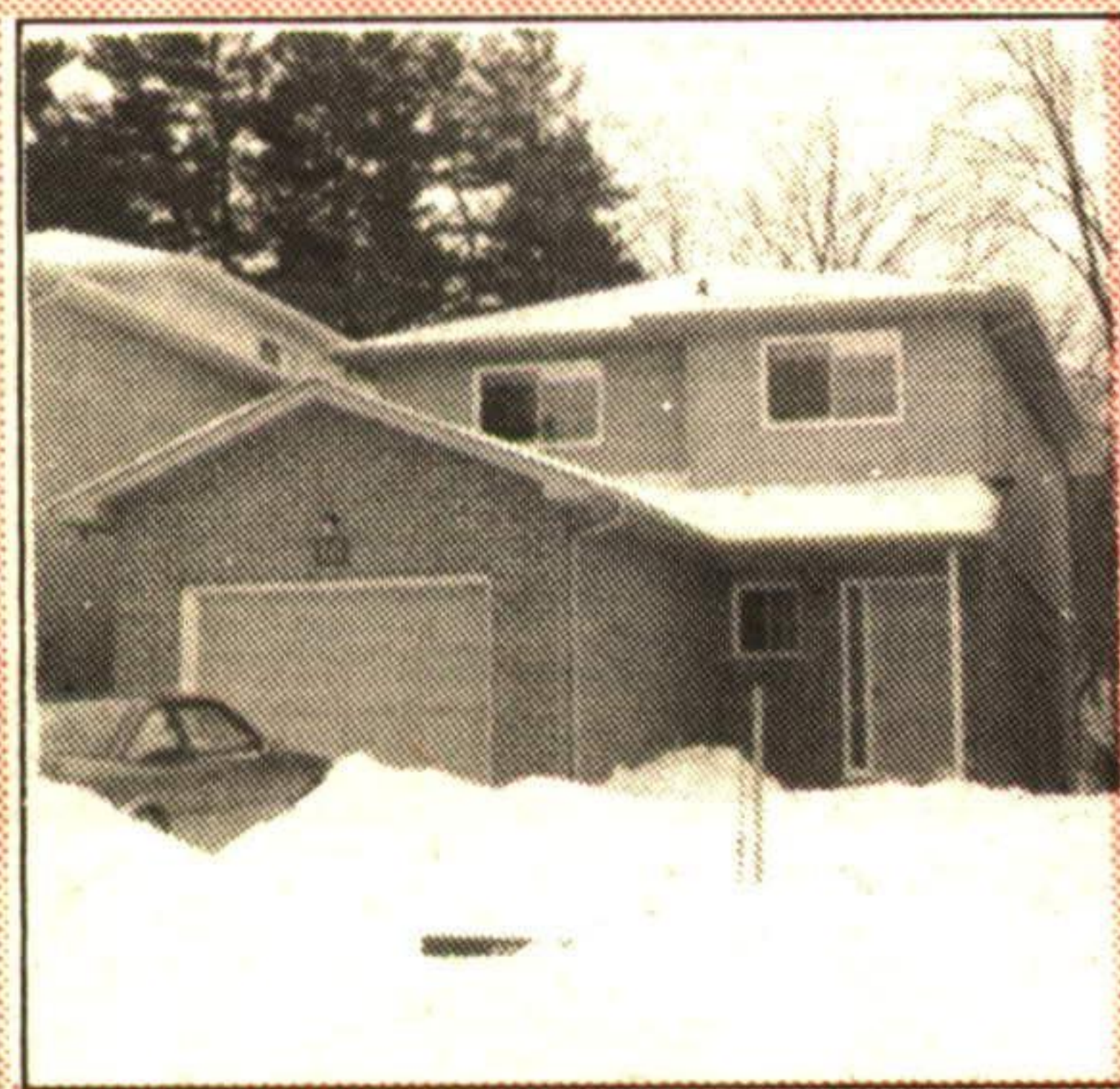


Joan Parkinson  
Sales Representative\*  
Res: 877-4830

PRESENTING...  
**16 Rosset  
Valley**  
**\$179,900**



Michelle Corney  
Sales Representative\*  
Res: 877-0848



- \* Main floor family room with fireplace.
- \* 2-1/2 baths.
- \* Large master with ensuite and walk-in closet.
- \* 3 bedrooms.
- \* Completely finished basement.
- \* Backing onto parkland.

Call Joan Parkinson\*  
or  
Michelle Corney\*  
**873-3377**

**SOLD**

ARTHUR F. JOHNSON & ASSOCIATES LIMITED REALTOR

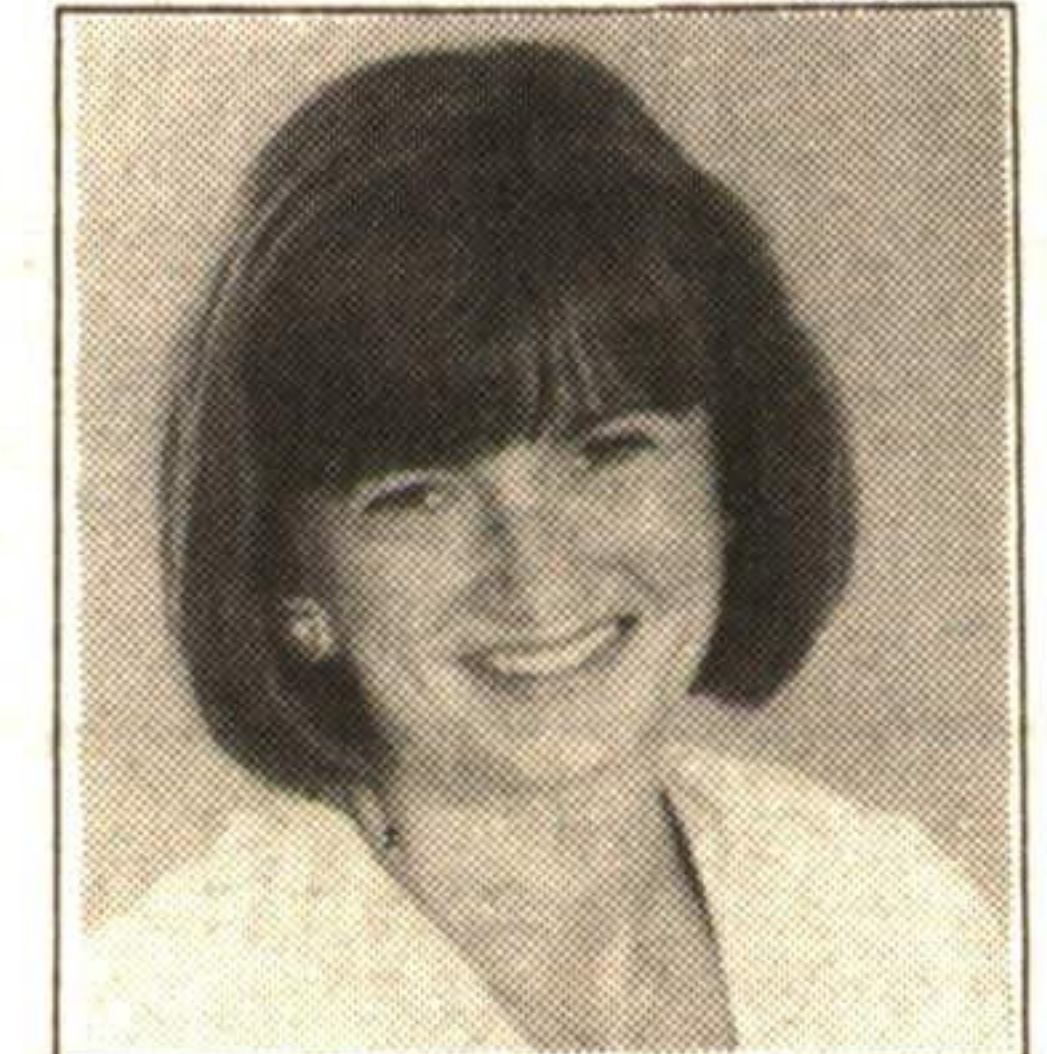
Performance Counts

**ARTHUR F. JOHNSON & ASSOCIATES**  
LIMITED REALTOR

877-5165 874-3040  
Tor.

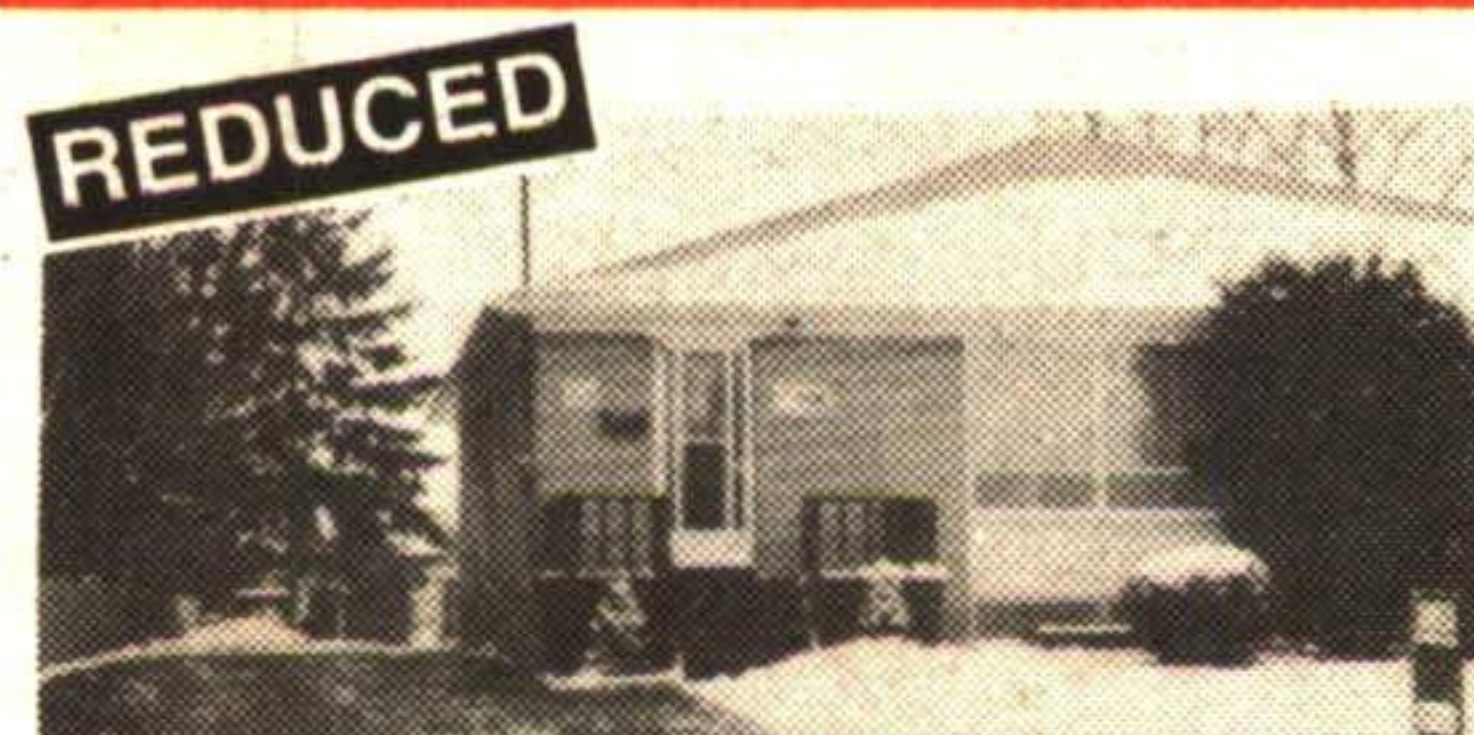


833-9714 873-0655  
Erin Res.



**MARTHA SUMMERS**  
Sales Representative

OPEN HOUSE



SUNDAY, MARCH 14 1-4 P.M.  
104 RAYLAWN CRES., GEORGETOWN  
PRICED TO SELL NOW \$143,900 92-2-114

VILLAGE CHARMER - \$149,000



A must to see inside - full of sunlight. Walkout from living room to deck and mature fenced yard. Interior has been redone with charm and character. Call Martha Summers\*.  
93-2-149

KEEP READING...



This picture doesn't tell all. Attached insulated workshop with nanny's quarters above. Superbly appointed home with attention to detail. A must to see on 1 acre with excellent location.  
93-2-195

PRICED TO SELL AT \$199,000



Pretty 2.75 acres with 10 minute access to 401. 3 bedrooms, living room with pine floors and woodstove for country warmth PLUS walkout to large deck PLUS separate large 2 car garage.  
93-2-162

CALEDON WHS - 20 ACRES



Fabulous wooded acreage, superbly appointed executive home with six-sided living room, large dining room with fireplace and country kitchen.  
93-2-147

CALEDON WHS 1 ACRE



Excellent value at \$179,000. 4 bdrms., large family room, walkout from lower level, garage.  
93-2-203

ERIN - 5 ACRES - \$239,900



No upgrades required, just move in to this immaculate home with large kitchen and tongue and groove pine. The barn & paddocks are all ready for your horses too!  
92-2-459

MILTON'S EDGE - \$529,000



Executive lifestyle with country privacy, commuting distance to Toronto or Guelph. Teak sunroom, hot tub, large deck, formal and informal living space. It is all here.  
92-2-510

GEORGETOWN - \$179,000



Need income from your property?? Here it is. Pretty treed lot with 2 separate yards. Separate 2 car garage. Custom pine kitchen, fireplace and woodstove, all add to the value.  
92-2-526

**REALTY WORLD** 390 TOWER ST. S. FERGUS  
YOUNGBLOOD-ATKINSON REALTOR **843-1365**

**OPEN HOUSE**

R.R. #5, Belwood  
Sunday, March 14th  
2:00 to 4:00 p.m.

Immaculate 2 storey home on 10.25 acres, 10 minutes east of Fergus. Suitable for horses. Has separate one bedroom apartment on main floor. \$329,900. Contact **LINDA MULLER (519) 843-1365 OR (519) 843-5098**. Directions: Hwy. 25 to Hwy. 24, left to Cty. Rd. 26, right to Cty. Rd. 18, left to Conc. 6, turn left 3/4 mile on left.

**OPEN HOUSE**

35 Amalia Cres., Belwood  
Sunday, March 14th  
1:00 to 3:00 p.m.

2500 sq. ft. almost new, original developers home. Lot has view of Lake and Countryside. Solid oak raised panel doors throughout interior. Spectacular 2 storey entrance. Winding oak staircases, unbelievable upgrades. Must see. Priced well below replacement costs. 20 minutes from Acton. Call **PAMELA LUMBY (519) 843-1365 or (519) 787-2142**. Directions: Belwood Estates - Hwy. 25 north to Hwy. 24, turn left to Wellington County Rd. 26, turn right down approx. 20 km to Belwood Estate on right.

ERIN 89 ACRES - \$589,000



Located just north of Hwy. 7, east of Acton. CENTURY STONE 4 bdrm. home, bush with stream, spring fed pond. 38 box stalls and indoor arena. Value + Location.  
92-2-485

ERIN 10 ACRES - \$249,000



Open concept, wood stove warmth, bright spacious country living, finished rec room, 20 x 40 utility building with drive through access.  
92-2-275

CALEDON EHS - \$249,000



Charming country home, renovated country kitchen, bright spacious living room/dining room, finished loft, separate garage, private lot.  
92-2-495