

MORTGAGE RATES THIS WEEK RATES TAKEN FEB. 25, 1993

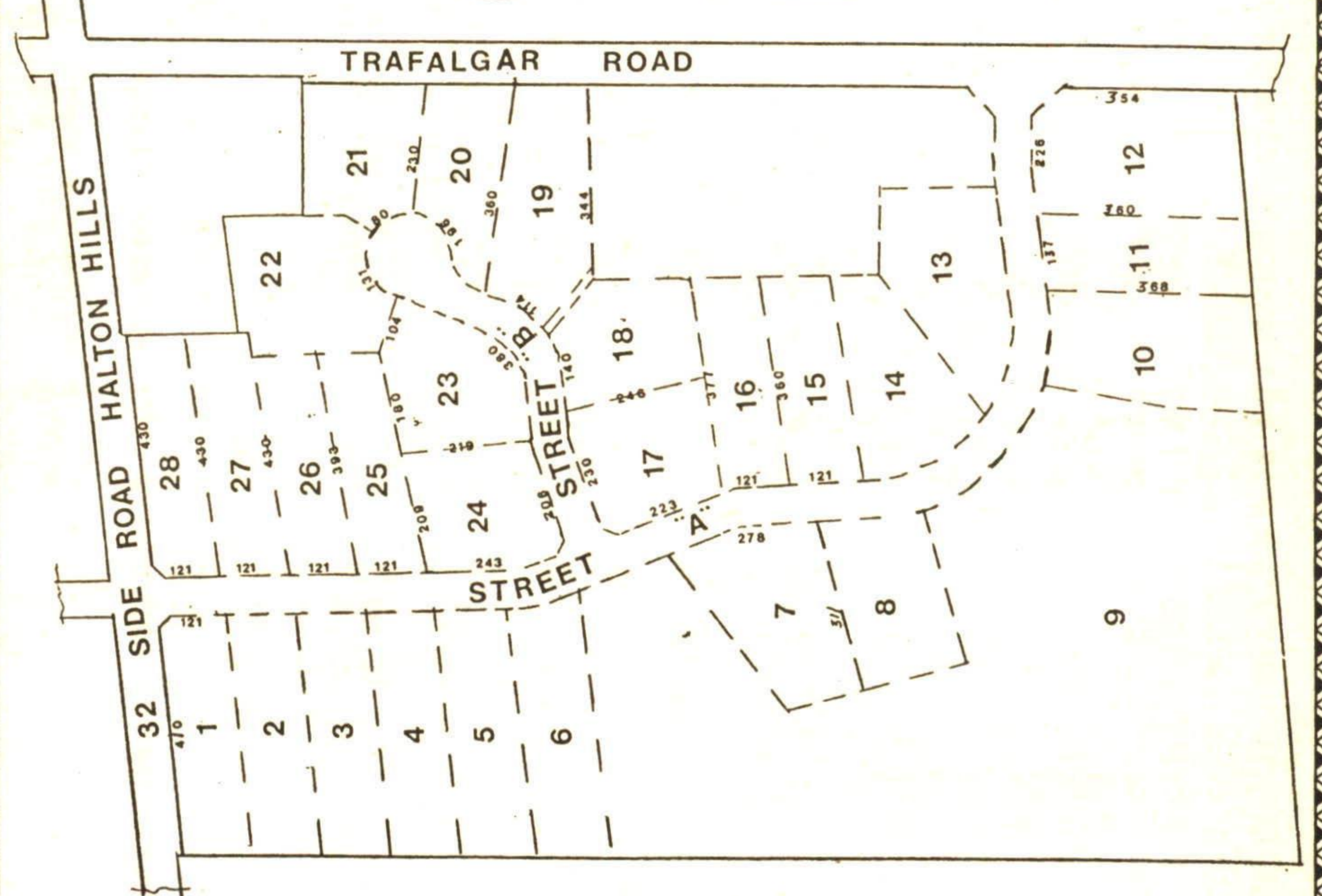
Institutions	Variable	6 Mths.	1 Yr.	2 Yrs.	3 Yrs.	4 Yrs.	5 Yrs.
Bank of Montreal	6-25 6.50op	7.95 8.45op	7.70 8.45op	8.20	8.70	9-1/4	9-1/2
Canadian Imperial			7.70 8.45op	8.20	8.70	9.35	9-1/2
Hongkong Bank	6-3/4op	8.45op	8	7-5/8 8-1/2op	8-1/4	8-3/4	9-1/4
Laurentian Bank	6-1/2op	8-1/2op	8	7-5/8 8-5/8op	8-1/8	8-3/4	9-1/4
Manulife Bank	n/a	7.95	7.70 8.45op	8.20	8.70	9-1/4	9-1/2
National Bank	n/a	7.95	7.70 8.45op	8.20	8.70	9-1/4	9-1/2
Royal Bank	n/a	7.95	7.70 8.45op	8.20	8.70	9-1/4	9-1/2
Scotiabank	6.50op	8.45op	8.45op	8.20	8.70	9-1/4	9-1/2
Toronto-Dominion	6.50op	8.45op	8.45op	8.20	8.70	9-1/4	9-1/2
Canada Trust	n/a	7-3/4 8.45op	7-1/2 8.45op	8.20	8.70	9-1/4	9-1/2
Central-Guaranty Trust	n/a	7.95 8.45op	7.70 8.45op	8.20	8.70	9-1/4	9-1/2
Co-Operative Trust	n/a	7.70 8.20op	7.70 8.45op	8.20 9op	8.70 9-3/4op		
Household Trust	n/a	8	7-3/4	8-1/4	9	9-1/4	9-1/2
Jet Power Credit Union	n/a	8	7.70	8-1/4	8-1/2	9-1/4	9.37
Montreal Trust	n/a	8-1/2op	8-1/4op				
National Trust	n/a	7.95 8-1/2op	7.70 8-1/2op	8.20	8.70	9-1/4	9-1/2
Premier Trust	6-3/4	8	7.70 8.45op	8.20	8.70	9-1/4	9-1/2
Prenor Trust	n/a	8	7.70 8.45op	8.20	8.70	9-1/4	9-1/2
Royal Trust	n/a	7-3/4 8-1/4op	7-1/2 8-1/2op	8 9op	8-3/4	9-1/4	9-1/2
		7.70 8.20op	7.70 8.45op	8.20	8.70	9-1/4	9-1/2

Prepared by Fiscal Agents. Notes: \*Interest rate charged subject to adjustment during term of mortgage. \*\*Please consult institutions for term of years available. All rates are prime rates and subject to change without notice. R.O.R. = RATES ON REQUEST op = OPEN - = NOT QUOTING R/O = RENEWALS ONLY N/A = NOT APPLICABLE 1/8 - .125 3/8 - .375 5/8 - .625 7/8 - .875

1+ ACRE BUILDING LOTS



In Scenic Ballinafad



from **\$89,900**

**READY TO BUILD**

Call Peter and Yvonne Hrkac  
Sales Representatives

**RE/MAX SUBURBAN (91) INC.**  
**877-5211 874-3051**



**GET SOLD ON US!**

HALTON HILLS MARKETPLACE

**JOHNSTON & DANIEL Limited Realtor**  
Cheltenham 416-838-3830 Tor./Bram. 416-846-2270  
**STANDARD OF EXCELLENCE**



**10 PRETTY ACRES - HUGE BARN \$339,000**

This home says 'welcome' as you walk through the door. By no means perfect, but well worth adding the finishing touches. At present there are 5 bedrooms, cosy sitting room, farmhouse kitchen with woodstove, main floor laundry. Pine board floors and pine clad windows in living room. Pool too - above ground. Pottery workshop too. 2 car garage. Magnificent maples line the driveway. You should see this one - soon. Call Gladys Scott\* 416-838-3830. JD93-019



**CLASSIC GRACE - CONTEMPORARY FLAIR**

Quite the best of both. This new 5 plus bedroom 5 bath stone clad home on 2 acres features MASSIVE halls, elegant living and dining rooms, hardwood floors, French doors, conservatory and a simply stunning kitchen. European baths and fittings, sauna. Palatial master bedroom suite. Exquisite and extraordinary, about 6,000 sq. ft. Asking \$895,000. Guelph-WR Waterfowl Park location. Call Gladys Scott 838-3830 or Res. 838-0198. JD93-021



**A GREAT START**

A clean, well-maintained "B" model River Run townhome with upgraded carpeting throughout. Single car garage. Good complex. Newly listed at \$134,000. Call Madeline Davies\*. 92-2-515



**OPPORTUNITY KNOCKS!**

Excellent opportunity to operate at home business. Currently operating as corner variety store. 2 storey home contains 2 apartments. Prime Huttonville location with great potential all for only \$249,900. Call Madeline Davies\*. 93-2-121



**TREASURED HEIRLOOM STONE COTTAGE**

A delightful reminder of the way we were (1850 and all that), situated on a rise amid mature trees this charming home offers 3 bedrooms... the master is large and has an ensuite bath, large living room, plus a formal parlour, an office and a den, in the new addition which has been so carefully matched in stone, is a welcoming kitchen/family room with a huge fireplace, oak cupboards etc. The workmanship is exemplary. Also a dining room with exposed stone walls and walkout to the stone terrace and lawn. Main floor laundry and powder room, attached garage. Two small outbuildings. All this is located on 2.47 acres in a charming hamlet south and east of Cambridge. Asking price is \$395,000. If you are in the market for something distinctive and charming, don't discount this one before you've seen it. Call Gladys Scott\* at 416-838-3830. JD93-018



**ORANGEVILLE 10 ACRES HUGE POND \$329,000**

Corner farm, great 3 bedroom brick home, beautifully restored, living room features beautiful fireplace with built-in bookcases either side. Chef's kitchen, great hardwood floors, barn that could use help! Gladys Scott\* 416-838-2270. JD93-026

**GRAB YOUR HOUSE PLANS**



**DAYBREAK AND SUNSET**

Excellent two acre building lot south of Hwy. #7. Ideal setting for your country home. Exceptionally good well already on lot and driveway is in. Don't hesitate. \$119,000. Call Madeline Davies\*. 92-469

Enjoy both and the hours in between at this beautiful waterfront building lot on Georgian Bay at Collingwood. A rare opportunity to build your dream home or cottage by the bay within walking distance to downtown. \$149,000. Call Madeline Davies\*. 92-2-256

**FIVE ACRE HOMESITE CAMPBELLVILLE**

Superb location south of 401, cul de sac, well in, stream through property \$250,000 firm. Yes, it is worth it!! Gladys Scott\* 416-846-2270. JD93-024

**STARTING OUT OR RETIRING?**

Lovely little two bedroom home with 3rd bedroom and rec room in basement. Great oak kitchen and built-ins and gleaming maple floors throughout. Owner may consider rent-to-own. \$109,900. Call Candis Roussos\* 838-3830. JD93-014



**Madeline Davies**  
Sales Rep.\*

BUS. 877-5165  
TOR. 874-3040  
ERIN 833-9714  
RES. 873-6588

ARTHUR F. **JOHNSON & ASSOCIATES**  
LIMITED REALTOR

