

DAVID BARBOUR REAL ESTATE

Beautiful Bungalow

Located in Hillsburgh on a cul-de-sac, Viceroy style, approx. 1500 sq. ft. bungalow, cathedral ceilings, 3 + 2 bdrms, 2 baths, stained glass windows, country kitchen, wood stove. 125' frontage. Fenced backyard with well established fruit trees and raised flower beds. Backs onto mature forest. Separate garage 28' x 44' with heated workshop. Listed \$229,000. B93-001

For further information call
DAN STEEVES, Sales Associate

Res. (519) 855-4826 Bus. (519) 855-4912 Fax (519) 855-4514

RE MAX BLUE SPRINGS

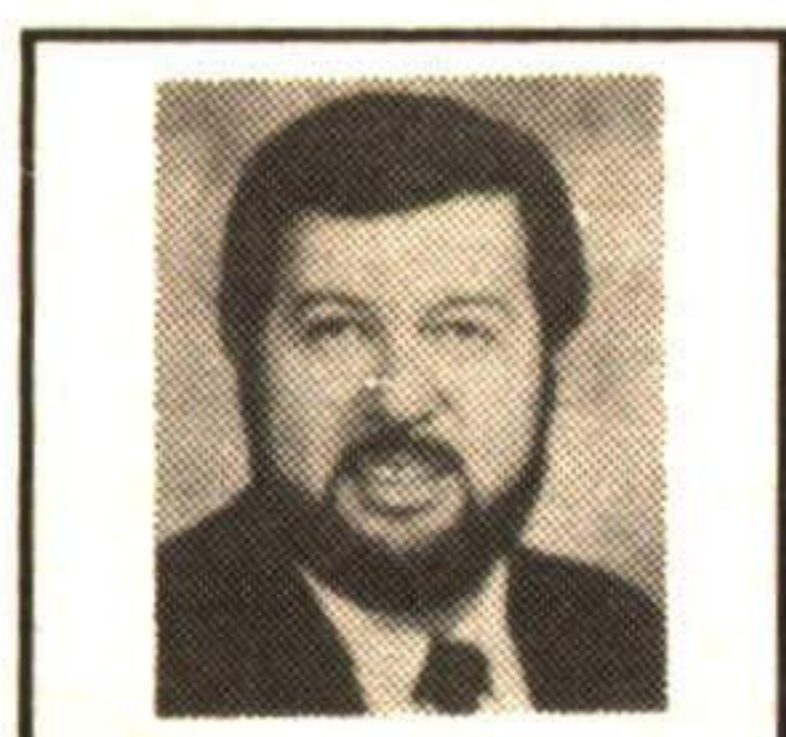
Realty (Halton) Corp.

SERVICE OF THE '90's!

Wayne will market your property on TWO Real Estate Boards with over 1500 sales reps or members at no additional cost to you!

BUS. **856-4348**

TOR. (416) 874-3053



Wayne Saunders
*Sales Associate

SERVICE OF THE '90's!

Wayne offers a written comprehensive market evaluation of your home at no cost to you!

FAX. 856-2128

Wayne Sells Properties Just Like Yours!

\$279,900 COUNTRY AT IT'S BEST



On a tranquil setting near Rockwood of over 2 1/2 well treed acres this 13 year old custom built, brick home has all the toys. Over 2600 sq. ft. of functional living space plus a basement apartment with walkout. The additional garage is only 3 years old Call Wayne to view this excellent value. RMRW93-01

\$229,900 CAPE COD COUNTRY! \$234,900 11/2 MILES NORTH OF HWY. 7



Located just west of Acton on a quiet paved road, this lovely custom built 4 bedroom home is placed on .7 acres and offers 2 x 6 construction. Family room, country size kitchen, main floor laundry & much more. Call Wayne. RMRW93-02

Ready for your country dream. This 46 acre parcel has mature maples across the front, a paved road and lovely views of the Eramosa Valley to the rear. 16 acres of bush, 30 acres presently worked and numerous home sites. Call Wayne. RMRW93-17

\$239,900 RANCH STYLE WITH PRIVACY



West of Acton in a hamlet setting with conservation at the rear. Over 2000 sq. ft., 4 bedrooms, custom built and a triple garage. A quality home. Call Wayne. RMRW93-03

\$105,900 START RIGHT HERE! \$239,000 HISTORY IN THE MAKING



Lovely 3 bedroom unit in Acton with finished rec room and walkout to private yard. Won't last. Call Wayne. RMRW93-00



Built for Dr. McConough in 1871 this 3200+ sq. ft. home is placed on 2 1/2 lots in the Village of Rockwood and offers great potential! Call Wayne for your private viewing. RMRW93-20

\$383,900 HORSES! HORSES! HORSES!

SOLD

This could be your house

\$259,900 4.5 ACRES OF COUNTRY CHARM



Located just east of Rockwood this 4 year old 1850 sq. ft. sidesplit has much to offer including a 29 x 21 rec room with woodstove and sliding doors, walkout, large principal rooms + 3 bathrooms. Call Wayne. RMRW93-16

*** MEMBER OF THE GUELPH & DISTRICT REAL ESTATE BOARD AND THE BRAMPTON REAL ESTATE BOARD TO SERVE YOU BETTER!**



Countrywide ALL PRO REALTY INC.

...the obvious choice 873-3377
Tor : 874-3057

Joan Parkinson
Sales Representative*
Res: 877-4830

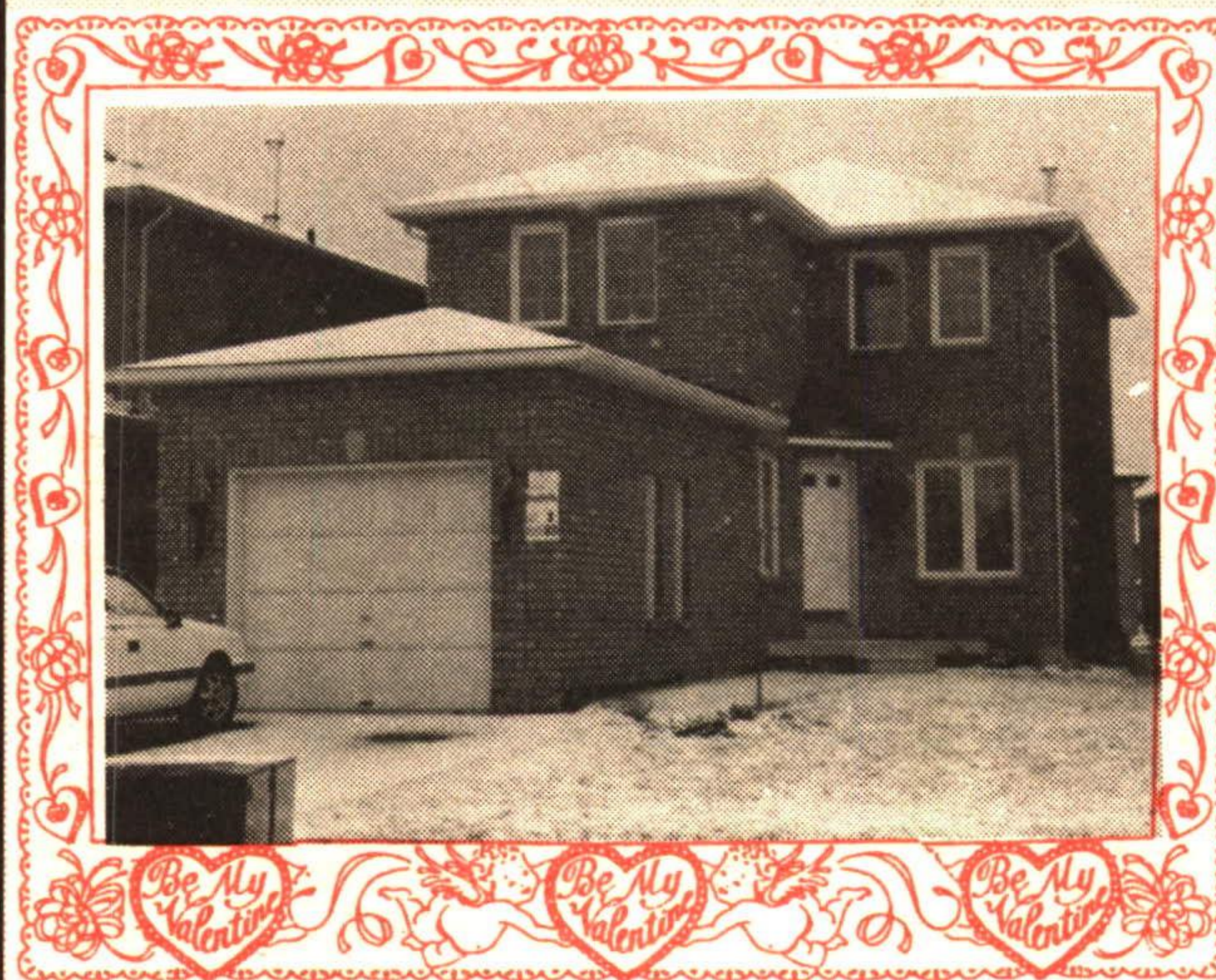
Michelle Corney
Sales Representative*
Res: 877-0848



COMPARE & SAVE

\$5,000

When you buy this resale instead of new. Call to enquire about our extra bonus when you buy this home from us in February.



Call Joan Parkinson* or Michelle Corney*
873-3377

For a sweetheart of a deal!

SOLD

ARTHUR F. JOHNSON & ASSOCIATES LIMITED REALTOR

Performance Counts

ARTHUR F. JOHNSON & ASSOCIATES LIMITED REALTOR

877-5165 874-3040

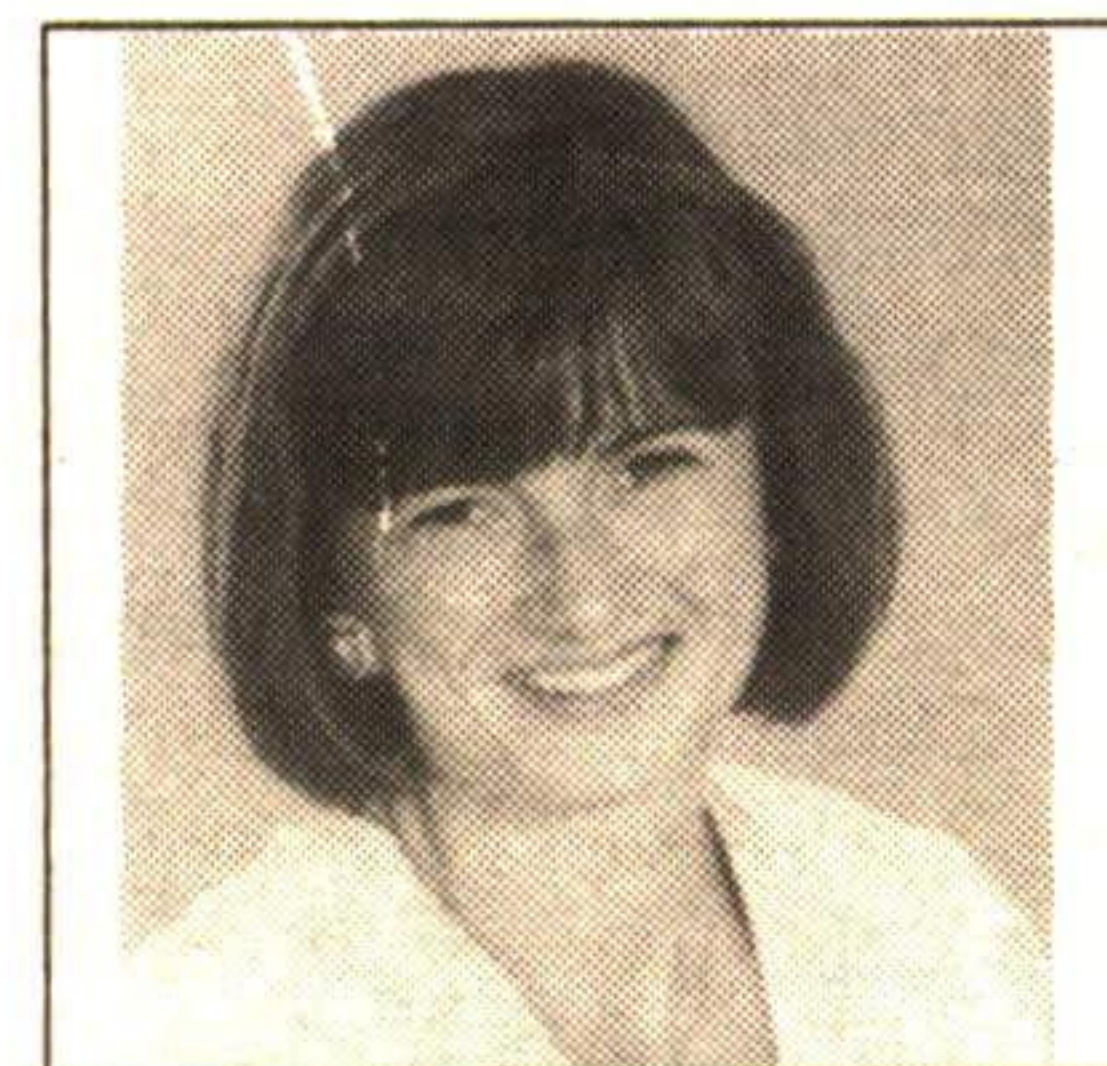
Tor.



833-9714 873-0655

Erin

Res.



MARTHA SUMMERS
Sales Representative

VILLAGE CHARMER - \$149,000



A must to see inside - full of sunlight. Walkout from living room to deck and mature fenced yard. Interior has been redone with charm and character. Call Martha Summers*. 93-2-149

HALTON HILLS - \$349,000



Large families will welcome the space this home offers with 5 bedrooms, skylit country kitchen, large family room, plus billiard room plus inground pool. 93-2-148

CALEDON WHS - 20 ACRES



Fabulous wooded acreage, superbly appointed executive home with six-sided living room, large dining room with fireplace and country kitchen. 93-2-147

PRICED TO SELL AT \$199,000



Pretty 2.75 acres with 10 minute access to 401. 3 bedrooms, living room with pine floors and woodstove for country warmth PLUS walkout to large deck PLUS separate large 2 car garage. 93-2-162

ERIN - \$229,000



Country charm and value featuring open concept with lots of light, solarium type kitchen, marble in ensuite and walkout from master to large deck. 92-2-281

BRUCEDALE - \$359,000



74 acre working farm, with 32' x 26' utility building with refrigeration unit plus 55' x 34' implement bldg. with concrete floor. Family home with country kitchen and long views. 92-2-474

ERIN - \$239,900



This is the year to keep your horses at home. 5 acres, 5 stalls, hardwood bush to ride through. 4 bedroom family home with pine rec room. 92-2-459

ERIN 10 ACRES - \$249,000



HAVE YOU LOOKED AT THIS?? It's all here for your hobby farm. Bright and spacious with excellent location in an area of horse farms. 92-2-275

GEORGETOWN - \$148,900



START HERE! Quiet street, fenced yard, double driveway, hardwood floors, eat-in kitchen, finished rec room. EXCELLENT VALUE. 93-2-114

ERIN 89 ACRES - \$589,000



Located just north of Hwy. 7, east of Acton. Century stone 4 bdrm. home, bush with stream, spring fed pond. 38 box stalls and indoor arena. Value + Location. 92-2-485

GEORGETOWN - \$179,000



Great starter - live upstairs, rent out the lower level until you need the space, 2 yards, separate double car garage. Home filled with custom pine inside. 92-2-526

MILTON'S EDGE - \$529,000



Executive lifestyle with country privacy, commuting distance to Toronto or Guelph. Teak sunroom, hot tub, large deck, formal and informal living space. It is all here. 92-2-510