



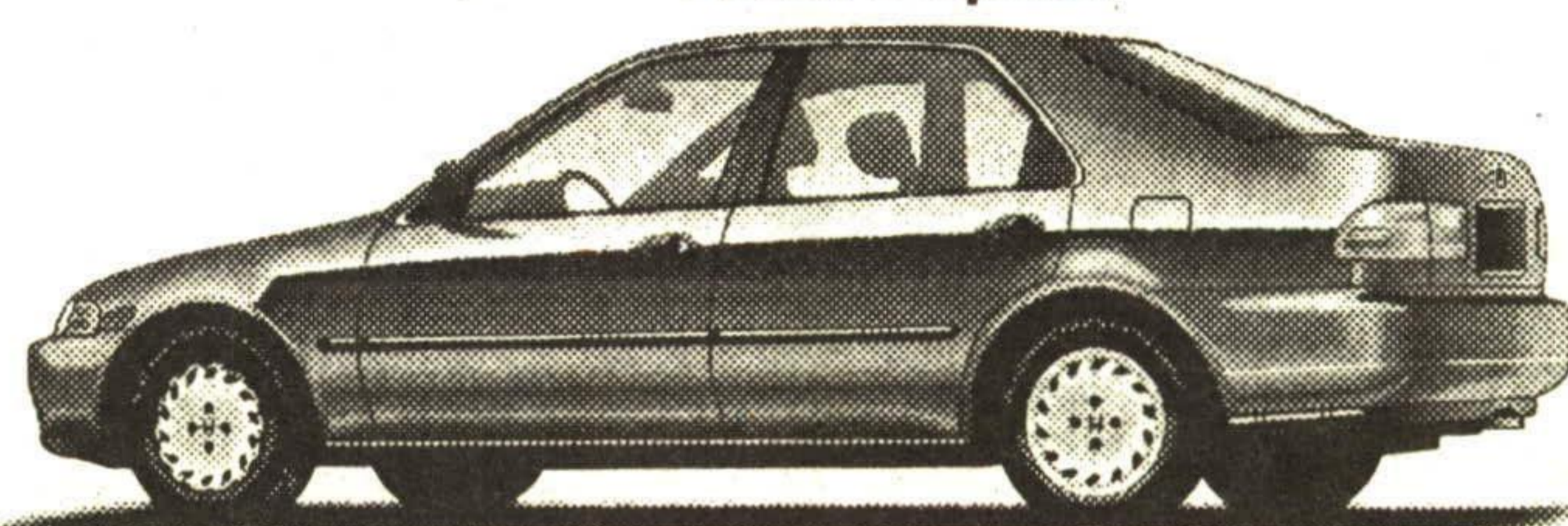
**WE ARE  
THE  
PRICE  
CRUSHERS**

**1993  
ACCORD SEDAN LX**  
5 Speed 4 Door



**\$298<sup>00</sup>**  
/month\*

**1993  
CIVIC SEDAN LX**  
4 Door 5 Speed



**\$228<sup>00</sup>**  
/month\*\*

**TOP \$\$\$  
FOR TRADE-INS**

**5.8%**  
FINANCING  
NO LIMIT  
ON 1992

**AND 1993 CIVIC SEDANS  
and ACCORDS\*\*\***

\*Lease based on Accord Sedan LX, 5-speed for 48 months for \$298 per month (total payments of \$14,304). \$500 down payment plus \$298 security deposit also required. 96,000 km allowance (\$0.10 per km over). OAC. Does not include taxes, licensing and insurance. At the end of 48 months return car to dealer or purchase it for an additional amount. Ask participating dealers for details. Dealers may lease for less.



**1990 NISSAN PATHFINDER SE**  
Trail Boss, auto, air, light bar, step rails, bush bar, colour Black. **\$17,995**

\*\*Lease based on Civic Sedan LX (EG854P), 5-speed for 48 months for \$228 per month (total payments of \$10,944). \$300 down payment plus \$228 security deposit also required. 96,000 km allowance (\$0.10 per km over). OAC. Does not include taxes, licensing and insurance. At the end of 48 months return car to dealer or purchase it for an additional amount. Ask participating dealers for details. Dealers may lease for less.  
\*\*\* 5.8% Finance Rate. No limit. 48 month maximum.



**1987 PONTIAC 6000 LE**  
V6, auto, air. Certified. **\$4,650**



**1989 PULSAR NX**  
5 speed, T-tops. 73,000 km. **\$8,500**



**1987 CIVIC SEDAN GL**  
5 speed, sunroof, all original 70,000 km. **\$6,450**



**1991 NISSAN KING CAB**  
5 speed, bed liner, jump seats, like new, 46,000 km. **\$9,995**



**1990 BERETTA GTZ**  
5 speed, air, like new, colour Maroon. 77,000 km. **\$11,800**



**1990 ACCORD EXR**  
5 speed, loaded, white, 50,000 km.. **\$15,700**



**1987 PRELUDE S**  
5 speed, sunroof, all original only 70,000 km. **\$7,850**



**1989 CIVIC SEDAN DX**  
5 speed, 73,000 km. **\$8,750**

*The New* **GEORGETOWN HONDA**  
203 GUELPH ST. (HWY. 7) GEORGETOWN  
**873-1818**