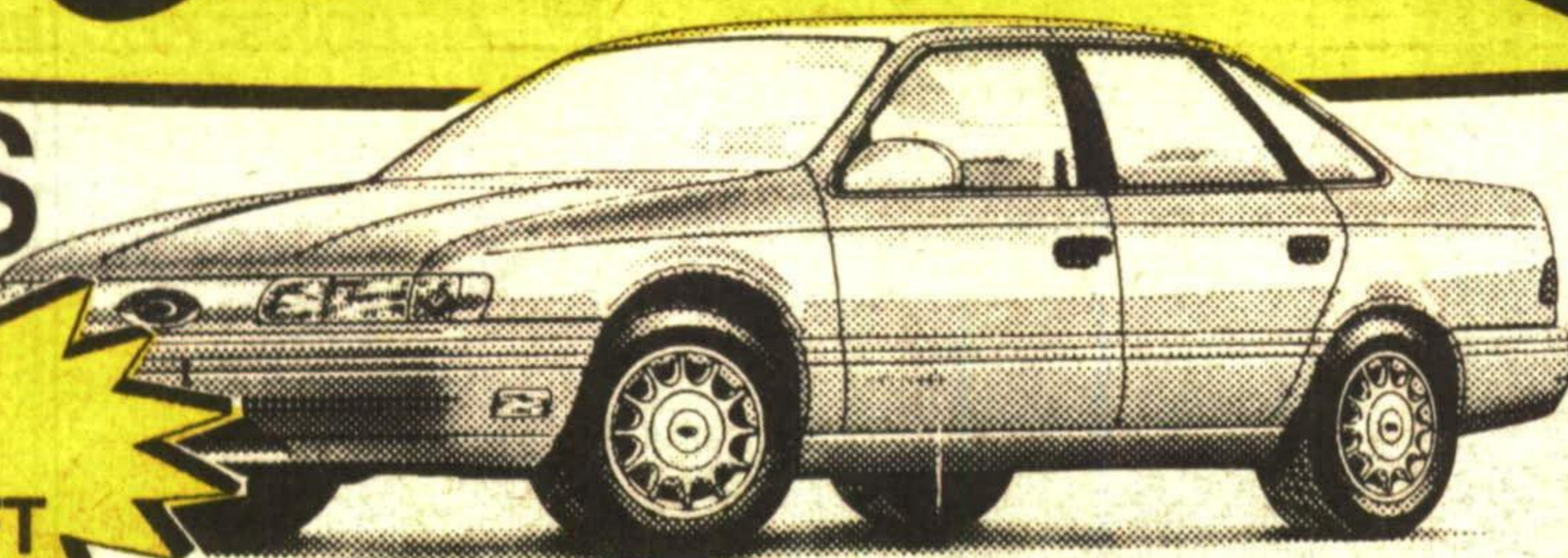


# '92 FINAL Clearance

**TAURUS**

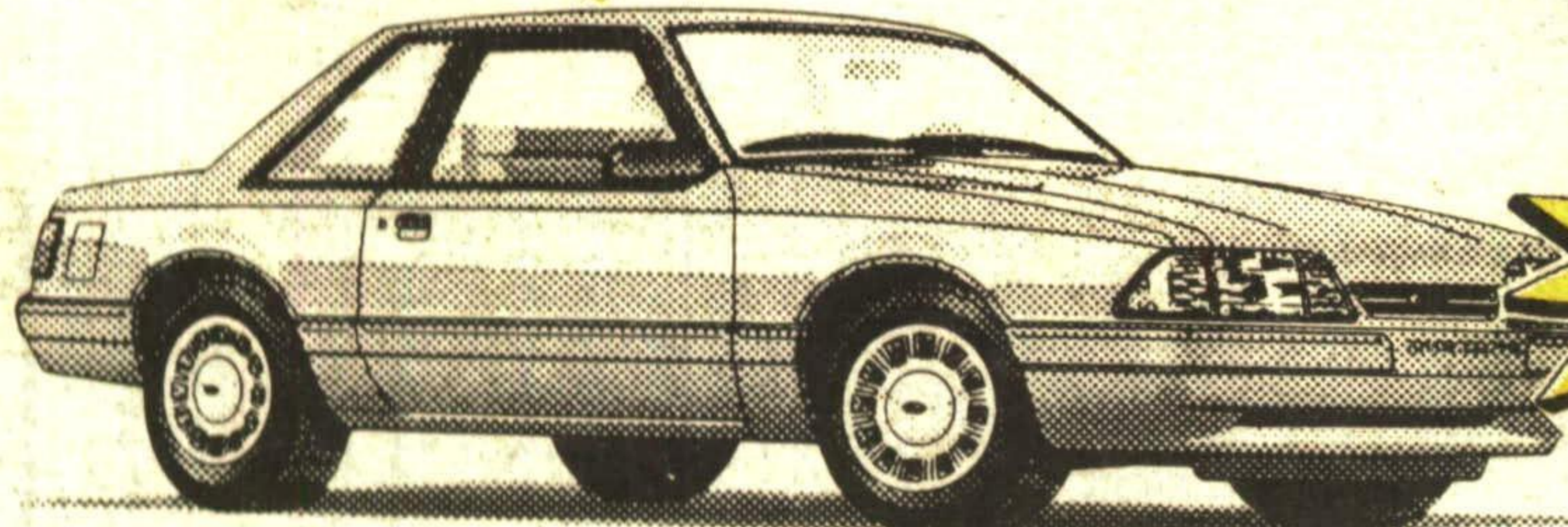
ONLY **5** LEFT



THESE PRICES WILL KNOCK YOUR SOCKS OFF!

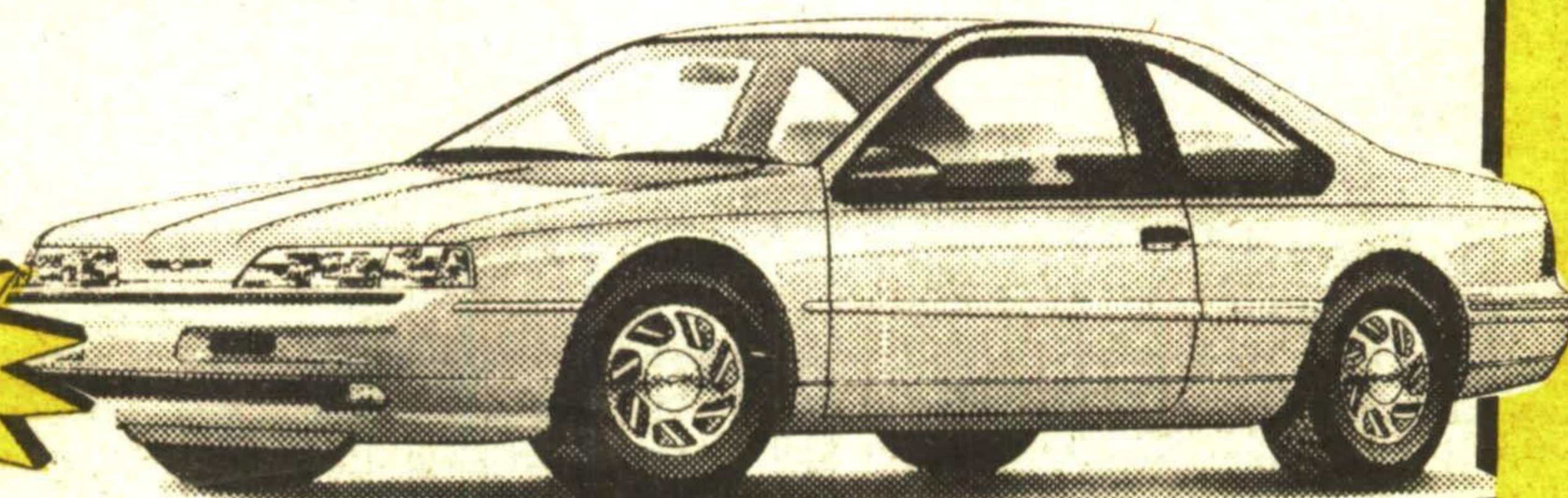
**MUSTANGS**

ONLY **2** LEFT



**THUNDERBIRDS**

ONLY **2** LEFT



**TEMPOS**

ONLY **8** LEFT

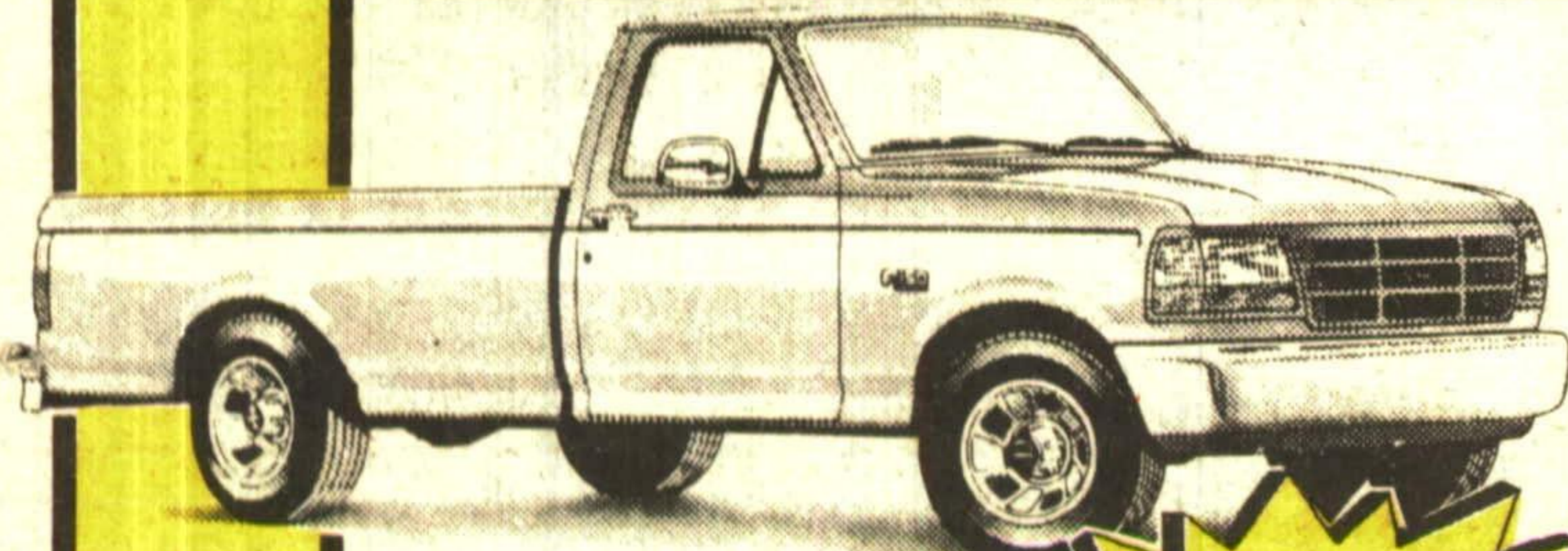
6.9% FINANCING



**ALL WINDSHIELD PRICED  
NO NEGOTIATIONS NECESSARY**

**EXPLORER 4X4**

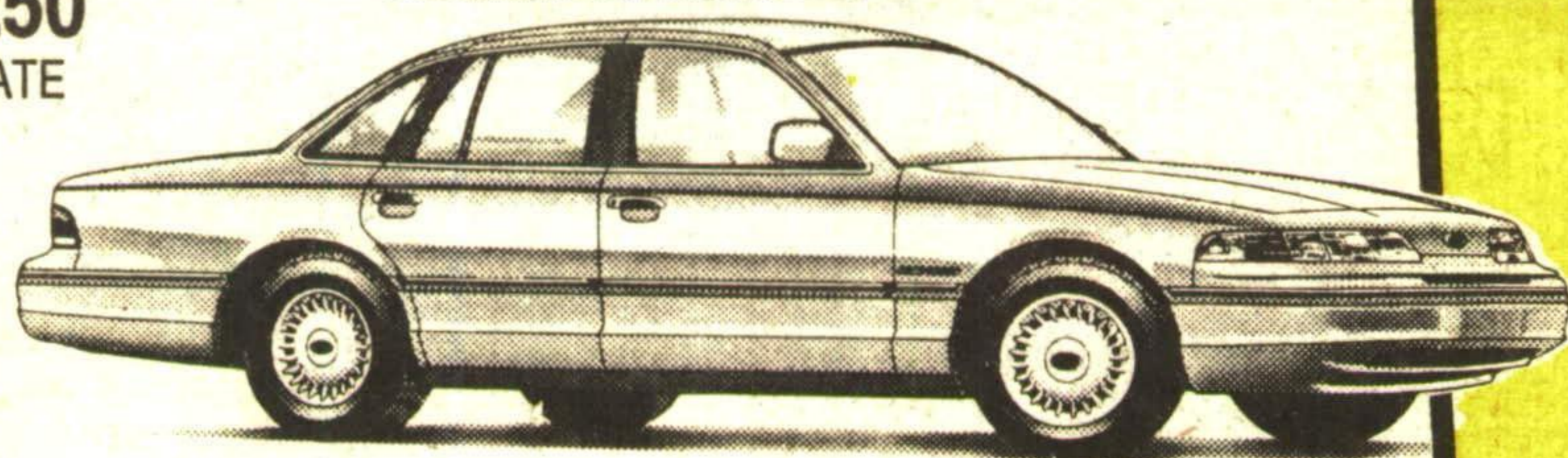
ONLY **5** LEFT



**TRUCKS**

ONLY **6** LEFT

UP TO \$2250 REBATE



**CROWN VICTORIA**

ONLY **2** LEFT

**AEROSTAR**

ONLY **2** LEFT

\$1250 REBATE

**SHOP EARLY FOR BEST SELECTION**

**CAPITAL FORD**

HWY. #7, GEORGETOWN

**873-1626**

Number **1**  
In Customer Satisfaction

**GREEN THUMB GARDENING**



By **CHRISTINE COLE**  
**AN INDOOR PINE TREE?**

The Norfolk Island Pine is a large forest tree in its native habitat but as a houseplant it grows slowly and stays within an enjoyable size for many years. It is amazing how much it looks like an outdoor evergreen with short, soft needle-like foliage. The arrangement of its tiered branches also adds a unique touch. This elegant evergreen houseplant makes an excellent Christmas tree that can be decorated year after year.

The Norfolk Island Pine is not demanding in its care. It grows best in a bright, well-lit location but out of direct sunlight. It can be grown in a cool to moderate temperature with average to high humidity, it likes to be kept moist but not too soggy.

Occasionally the bottom branches may be lost from the plant. This can be considered a decorative effect or a disaster. There is a number of reasons that this can happen or even a combination of them. Low humidity, too high room temperature, overwatering during the dormant season and letting the soil dry out too much can lead to the loss of the lower branches. One suggestion to camouflage the bare stem is to plant one or two smaller pines in the same pot to create a multi-stemmed potful of plants.

Each week Christine Cole of Tuitman's Garden Centre and Landscaping, Highway 25, 1 mile south of Acton, 853-2480, will be presenting helpful tips and information to assist you in creating your garden show-place!

**TUITMAN'S GARDEN CENTRE**  
ACTON  
853-2480