

Give Michelle a call . . . 873-0301
**Ask Her About The
 Upcoming Real Estate
 Feature!**

MORTGAGE RATES THIS WEEK RATES TAKEN OCT. 30, 1992

Institutions	Variable	6 Mths	1 Yr.	2 Yrs.	3 Yrs.	4 Yrs.	5 Yrs.
Bank of Montreal	8-1/4	8-3/4op	8-3/4op	8-1/4	8-3/4	9	9-1/4
Canadian Imperial	8-1/4	8-3/4op	8-3/4op	8-1/4	8-3/4	9	9-1/4
Hongkong Bank	7-3/4	8-3/4op	8-3/4op	8-1/4	8-3/4	9	9-1/4
Laurentian Bank	n/a	7-1/2	7-1/2	7-3/4	8-1/4	8-1/2	8-3/4
National Bank	n/a	8	8	8-1/4	8-3/4	9	9-1/4
Royal Bank	7-3/4	8-3/4op	8-3/4op	8-1/4	8-3/4	9	9-1/4
Scotiabank	8-1/4	8-3/4op	8-3/4op	8-1/4	8-3/4	9	9-1/4
Toronto-Dominion	8-1/4	8	8	8-1/4	8-3/4	9	9-1/4
Capital Trust	n/a	8	8-3/4op	8-1/4	8-3/4	9	9-1/4
Canada Trust	n/a	7.70	7-3/4	8-1/4	8-1/2	9	9-1/4
Central Guaranty Trust	n/a	8	8	8-1/4	8-3/4	9	9-1/4
Co-Operative Trust	n/a	7-3/4	7-3/4	8-1/4	8-3/4	9	9-1/4
General Trust	n/a	7-3/4	8	8-1/4	8-3/4	9	9-1/4
Household Trust	n/a	8-3/4	8-3/8	8-1/2	9-1/4	9-3/8	9-1/2
Jet Power Credit Union	n/a	7-1/2	7-3/4	8-1/4	8-3/4	9	9-1/4
Montreal Trust	n/a	7-7/8	8	8-1/4	8-3/4	9	9-1/4
National Trust	8-1/4	8	8	8-1/4	8-3/4	9	9-1/4
Premier Trust	n/a	8	8	8-1/4	8-3/4	9	9-1/4
Prenor Trust	n/a	8op	8op	8-1/4op	8-3/4	9*	9-1/4
Royal Trust	n/a	7-3/4	7-3/4	8-1/4	8-3/4	9	9-1/4

Prepared by Fiscal Agents. Notes: *Interest rate charged subject to adjustment during term of mortgage. **Please consult institutions for term of years available. All rates are prime rates and subject to change without notice.

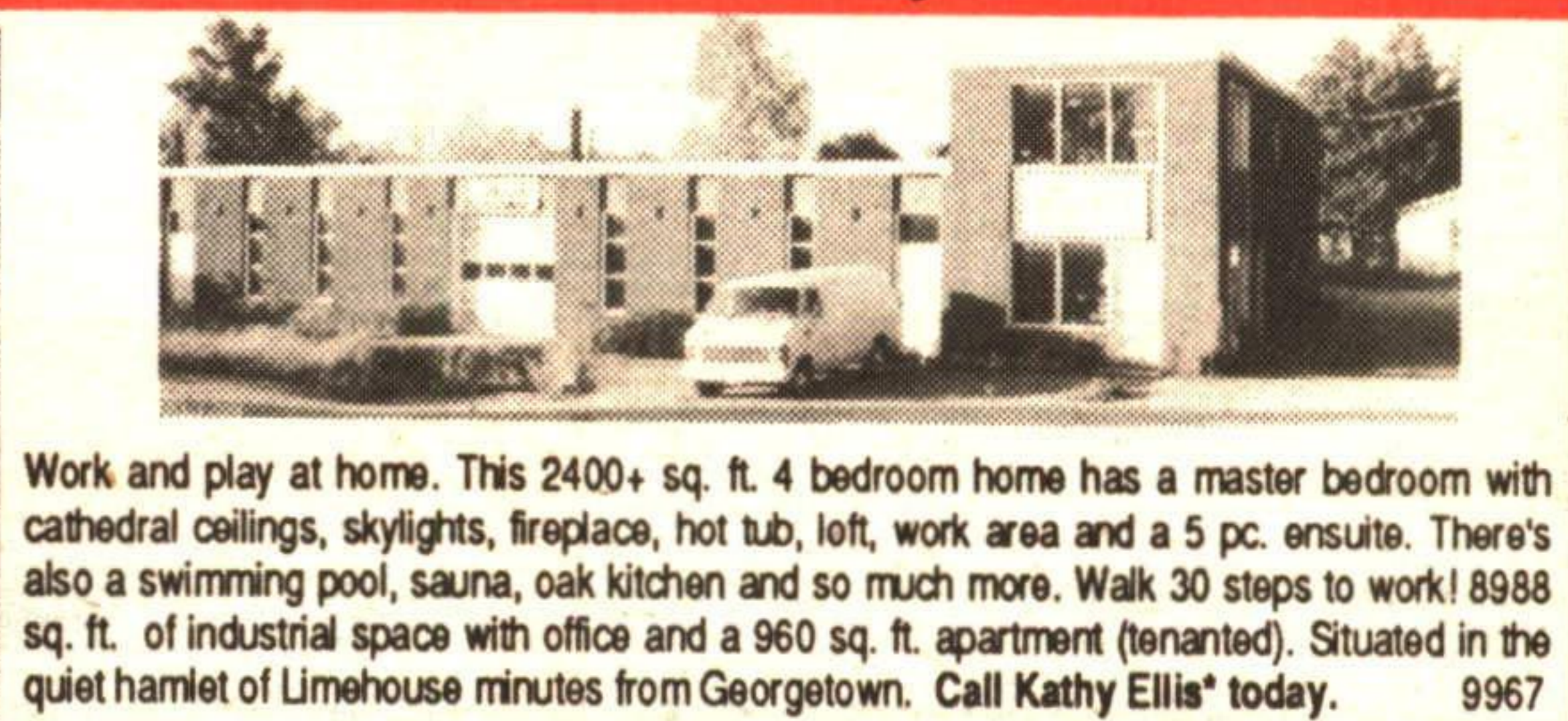
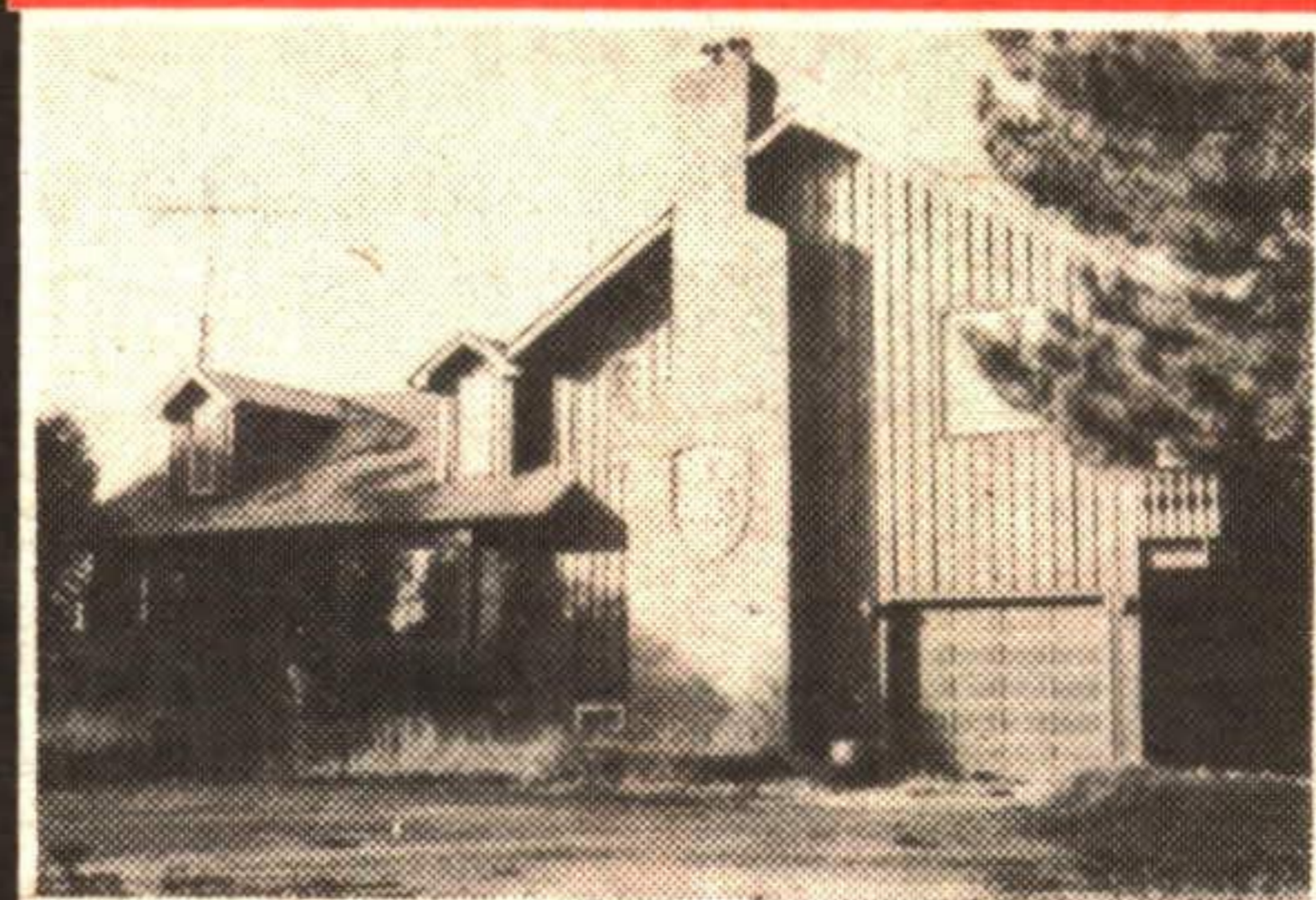
R.O.M. - RATES ON REQUEST
 op - OPEN
 * - NOT QUOTING

N/O - RENEWALS ONLY
 N/A - NOT APPLICABLE

1/4 - .125
 3/8 - .375
 5/8 - .625
 7/8 - .875



POWER OF SALE \$385,000

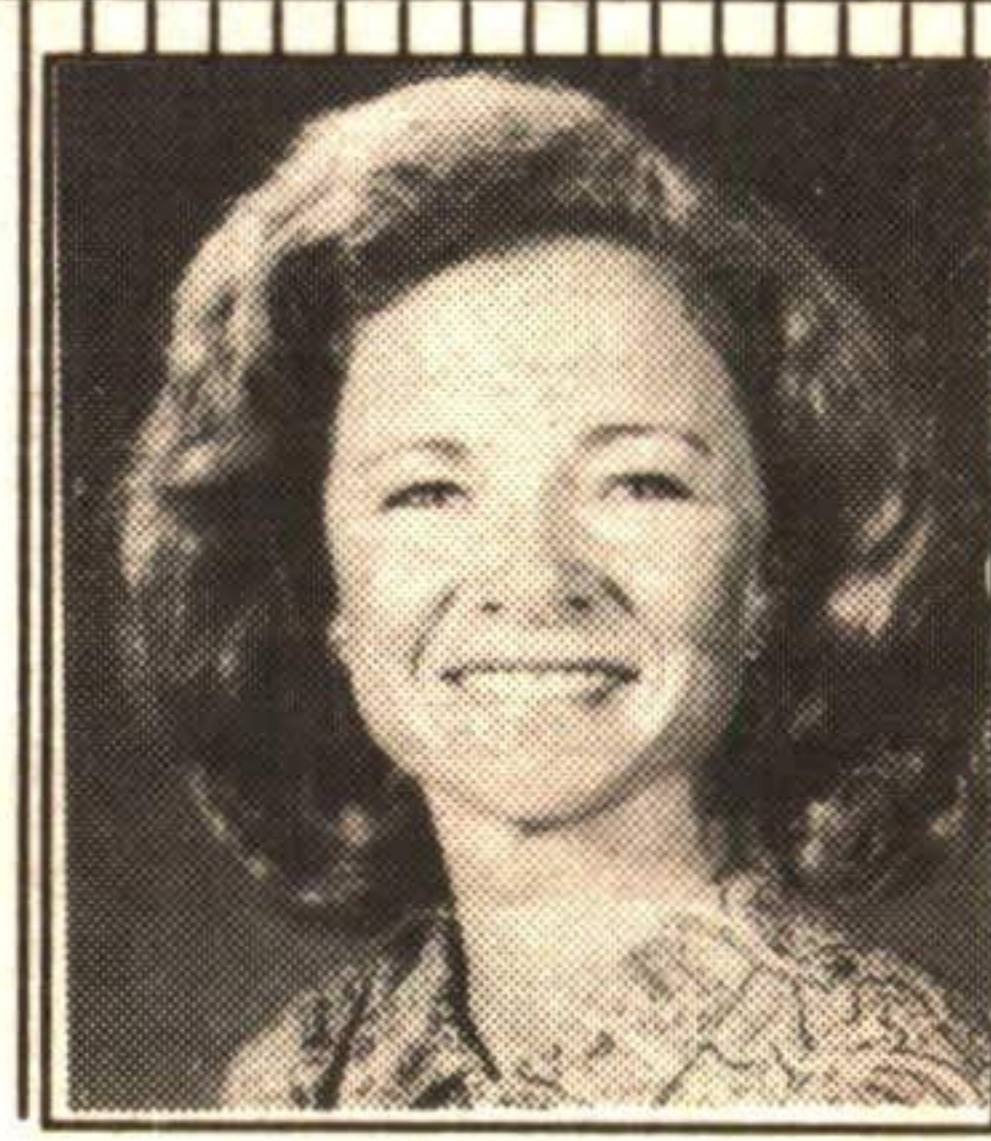


Work and play at home. This 2400+ sq. ft. 4 bedroom home has a master bedroom with cathedral ceilings, skylights, fireplace, hot tub, loft, work area and a 5 pc. ensuite. There's also a swimming pool, sauna, oak kitchen and so much more. Walk 30 steps to work! 8988 sq. ft. of industrial space with office and a 960 sq. ft. apartment (tenanted). Situated in the quiet hamlet of Limehouse minutes from Georgetown. Call Kathy Ellis* today. 9967

WHAT MORE COULD YOU WANT?

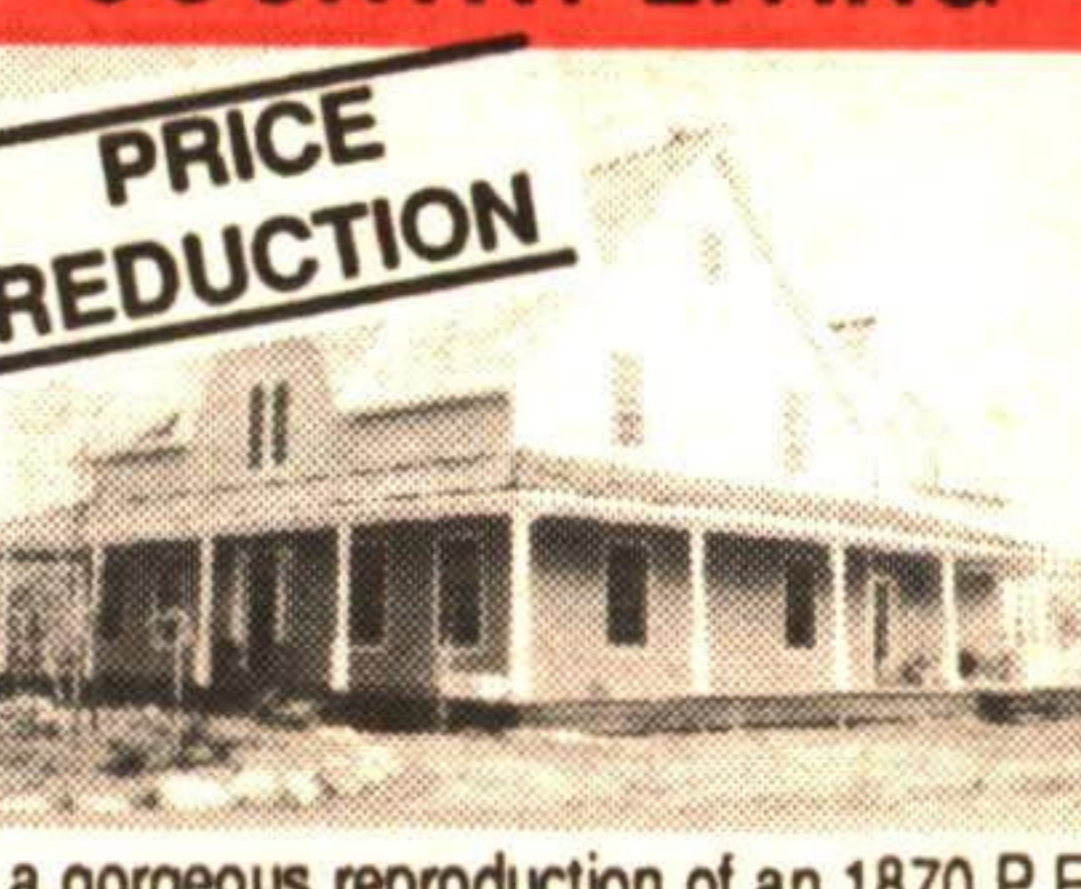


This spectacular Tudor style bungalow has it all. 3,000 sq. ft. of beautifully appointed living space on main floor, an additional 1500 sq. ft. downstairs with walkout (could be a nanny suite). There are six bedrooms, 5 bathrooms, spectacular large principal rooms and the property is delightful. Call Kathy Ellis* for your appt. \$469,000. 9971



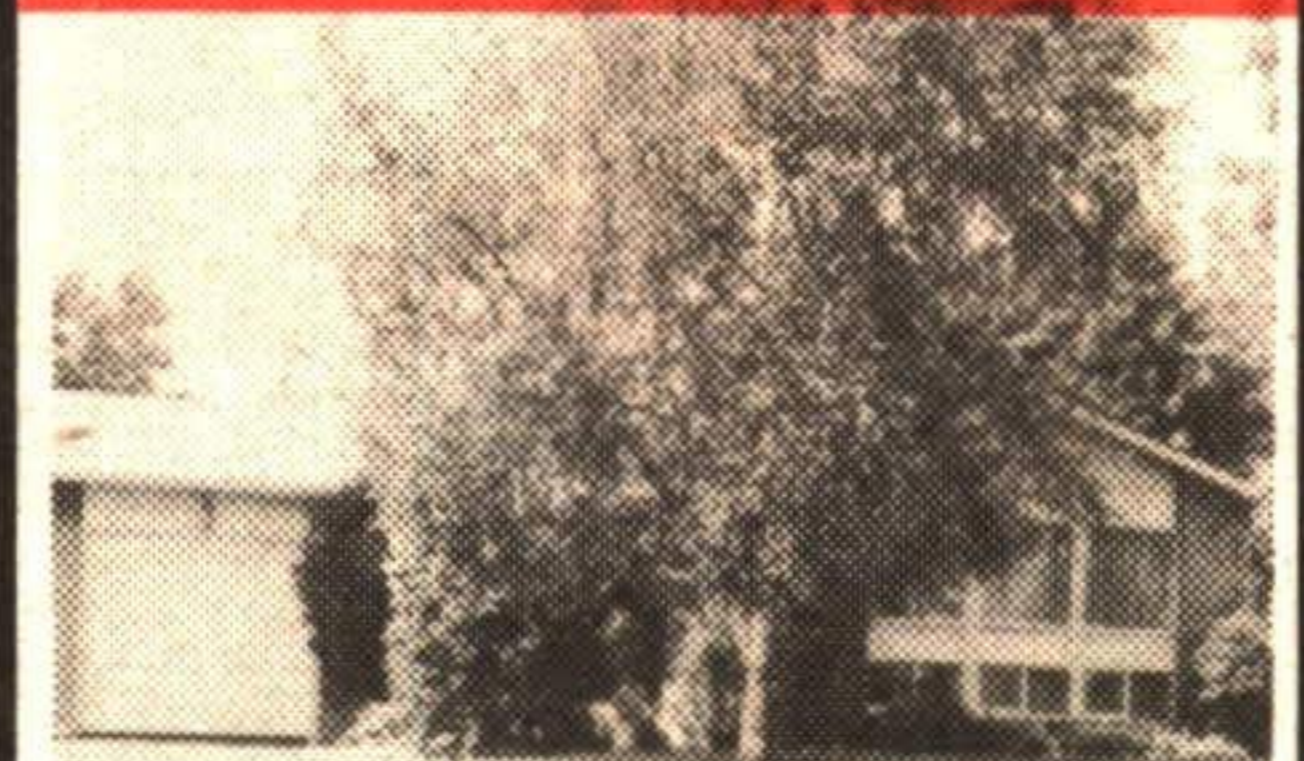
Kathy Ellis
 Sales Representative
*No Promises,
 Just Performance*
873-0300

COUNTRY LIVING



In a gorgeous reproduction of an 1870 P.E.I. museum. This 5400 sq. ft. home is beautifully situated on a 2.67 acres in an area of estate homes surrounded by 90 acres of common conservation land. Located within an easy commute to the city. Some of the features of this 6 bedroom, 6 bath home are: antique maple floors, pickled pine ceilings, Poggenpohl kitchen and so much more. Call Kathy Ellis*. 9882

REDUCED



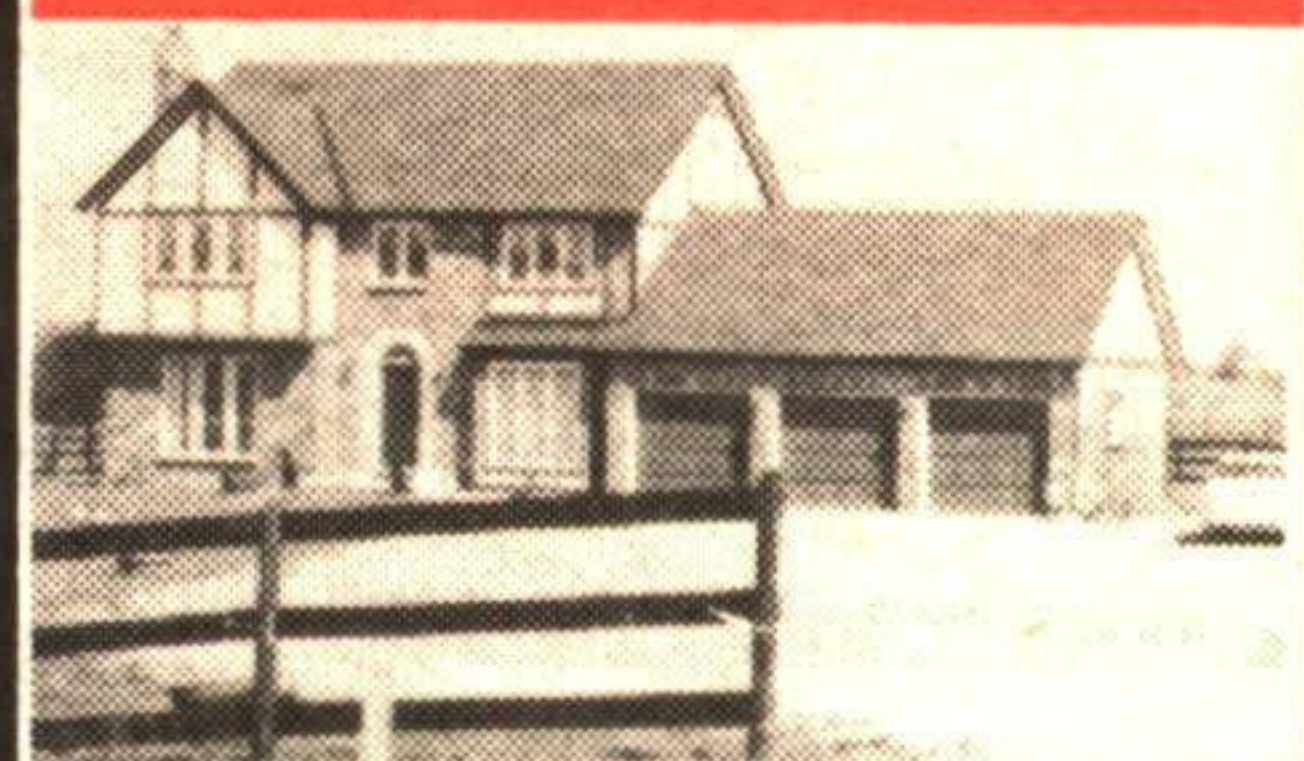
VENDOR MOTIVATED - \$174,900
 This charming sidesplit is located in the Lakeview area of Acton. The property is fantastic with a backyard that offers privacy, pool and patio. 3 bedroom home has upgraded bathrooms & kitchen, hardwood floors and so much more. Don't hesitate call Kathy Ellis* today for your showing 877-2725 or 877-0300. 9904

23 STUART McLAREN



This spacious 1200 sq. ft. townhome (Holly) offers many upgrades, walkout to deck with views & a fabulous floor plan. The master bedroom is extra large with bow window and master ensuite. Some of the upgrades are oak cabinets, pedestal sink, ceramics and upgraded underpadding. Priced to sell at \$147,900. Call today, Kathy Ellis*. 9961

COMMUTERS' SPECIAL

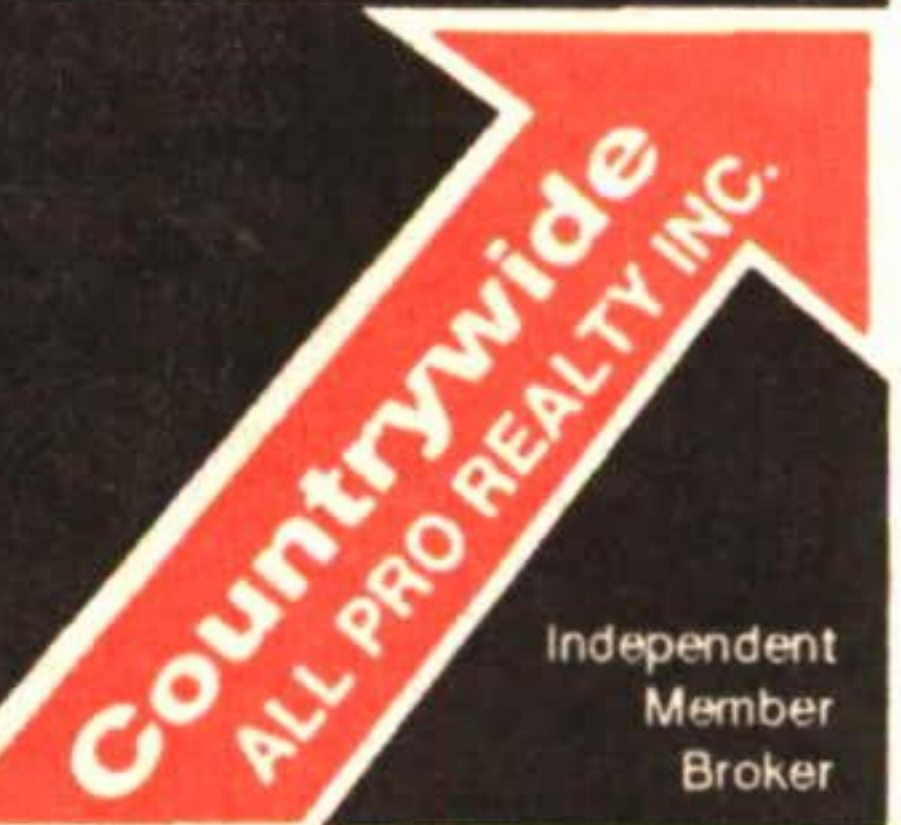


This 4 bedroom Tudor style home is fantastic, tastefully decorated and immaculate. There are four agricultural acres with paddocks, 6-8 stall barn & driveway. Location? 40 minutes to Toronto airport, 15 minutes to Guelph and Acton, 25 minutes to Georgetown. \$384,500. Call Kathy Ellis*. 9874

Countrywide

ALL PRO REALTY INC.

...the obvious choice 873-3377
 Tor. 874-3057



A LOT MEANS A LOT!



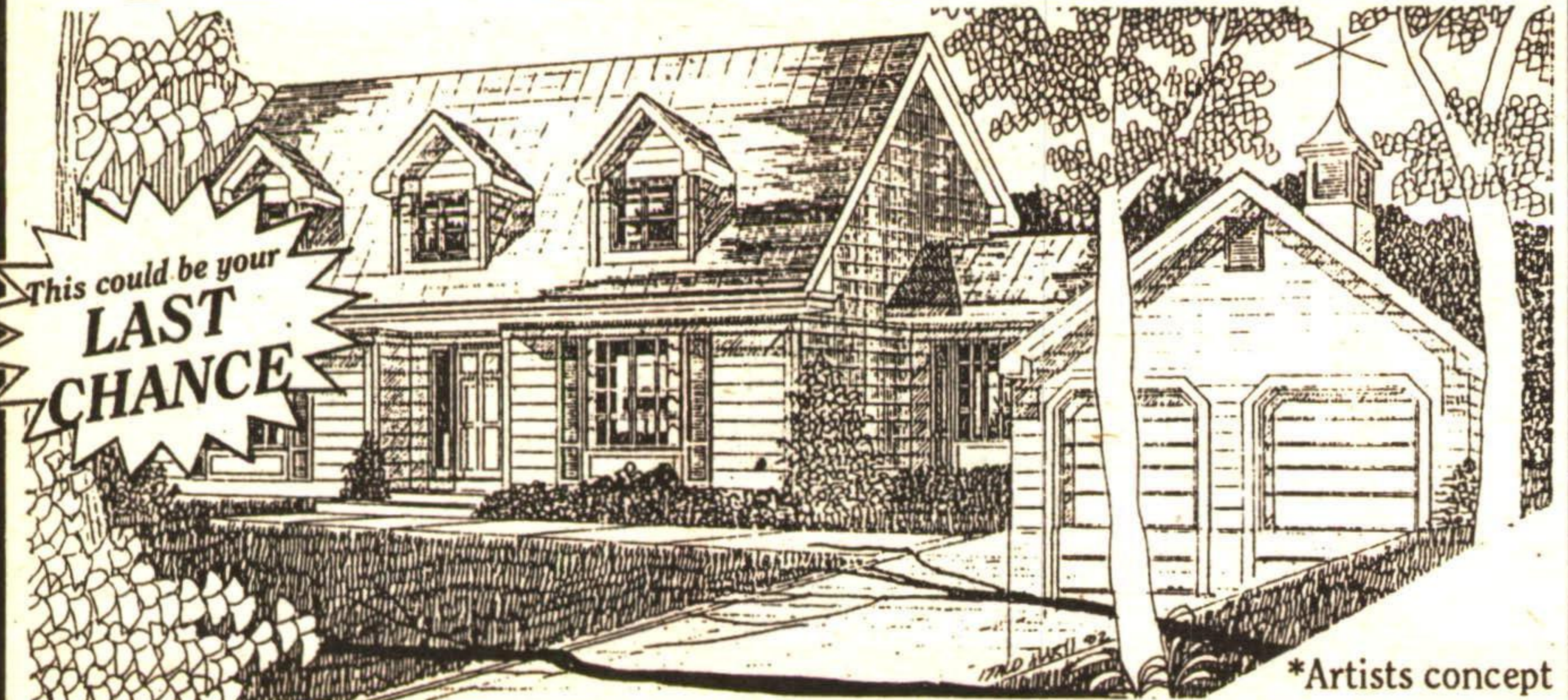
- Super extra large lot with mature trees
 - Quiet court location
 - Sharp 4 bedroom, 2 storey
 - Rec room with bar
 - Roof re-shingled, central air, etc.
- A must if you want a place with space. CW92-100

NOW \$199,900!



Call **Sandra Hurley**
 Sales Representative*
873-0300 874-3057

Quiet village life as it used to be, on
1/2 ACRE LOTS

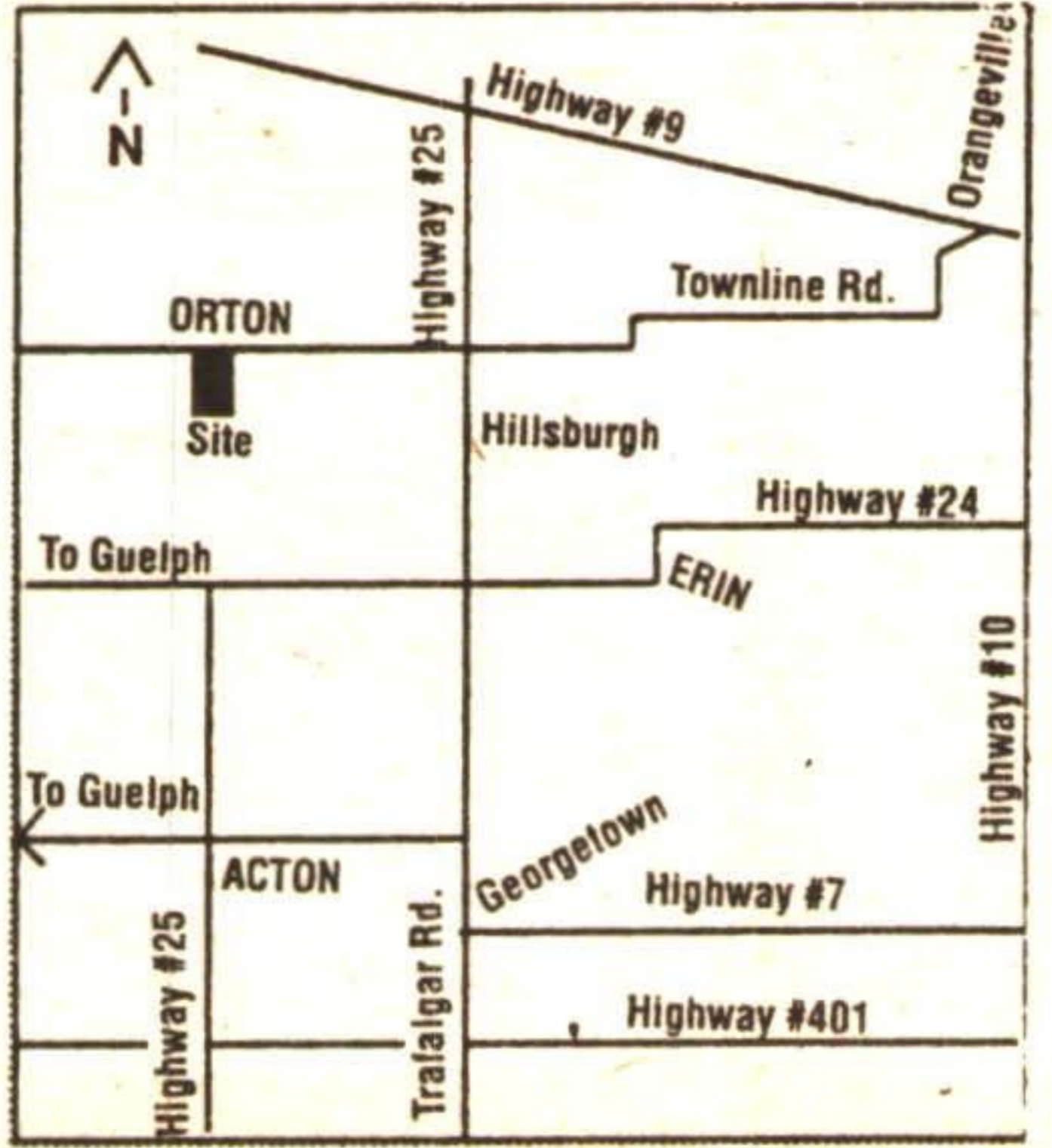


Features:
 * Some backing onto conservation
 * March/April occupancy

From \$149,900

17 ONLY 26 LOTS
ATHENWOOD IN ORTON MEADOWS

Sales Office
1-519-855-6181
 Hours: Sat., Sun., Mon., Tues.
 Noon-5 p.m.
 Wed., Thurs., Fri. - CLOSED
 Sales & Construction Managed by
Petersfield Developments
 Builder's of fine homes
 in Orangeville & Brampton
 *Brokers Protected



Excellent Service Rating
 By Ontario New Home Warranty