

GREEN THUMB GARDENING



By CHRISTINE COLE RHODODENDRONS

Rhododendrons are beautiful broad-leaved evergreens that are attractive garden plants during every season of the year. When in bloom, few other shrubs can rival their showy flowers. Their clusters of trumpet-shaped flowers range in colors from light pink, mauve to bright red. Sometimes the flowers are so numerous that the foliage is partially hidden. There is now several varieties - that have a small stature at maturity (3-5 feet), and that are hardy to 30°C. Such as: P.J.M., Nova Zembla, Roseum Catawbnense, and more.

The successful culture of rhododendrons is a worthwhile endeavour. The planting site and soil are the first steps toward a healthy, flowering shrub. The best site is one that is protected from the winter westerly winds and sun. Rhododendrons planted in an exposed location may be affected by windburn, dessication and scorched leaves. Rhododendrons also require an acid, well-drained soil that is high in organic matter. Unfortunately, this soil texture is rare in this area, therefore the soil will have to be amended to produce such a medium. In alkaline soils it is advisable to excavate the planting area to a depth of two feet, place a five inch layer of gravel in the bottom of the bed and fill in the rest with a light topsoil and peat moss mixture or straight peat moss. The peat moss provides the acidity required to grow healthy rhododendrons. Over time the soil may lose its acidity, mulching with shredded oak leaves or the addition of aluminum sulphate to the soil will lower the PH (more acid) to a desirable level.

Once rhododendrons are established they require little maintenance. And if the location is properly chosen little or no winter protection is necessary. However, the branches of your Christmas tree placed over the shrub in tee-pee fashion will prevent wind burn and dessication and the dropped needles will be a beneficial mulch. Rhododendrons flower on the seasons wood and should only be pruned after it has flowered.

Each week Christine Cole of Tuitman's Garden Centre and Landscaping, Highway 25, 1 mile south of Acton, 853-2480, will be presenting helpful tips and information to assist you in creating your garden show-place!

TUITMAN'S
GARDEN CENTRE
ACTON
853-2480

ASSIC

ALERT

*Be prepared
when travelling*

Because the Ontario Health Insurance Plan (OHIP) has drastically reduced its medical coverage for out of country travellers, it has become more important to examine costs of various medical plans. This only applies to out-of-country as the provinces now have a reciprocal agreement to accept each other's rate structure for purposes of reimbursement. The September issue of "Good Times," a Canadian Magazine for Successful Retirement, wrote an excellent article entitled "Health Insurance should be a priority." This can be

helpful for those wishing more information.

A few points to keep in mind when shopping around for travel insurance are as follows:

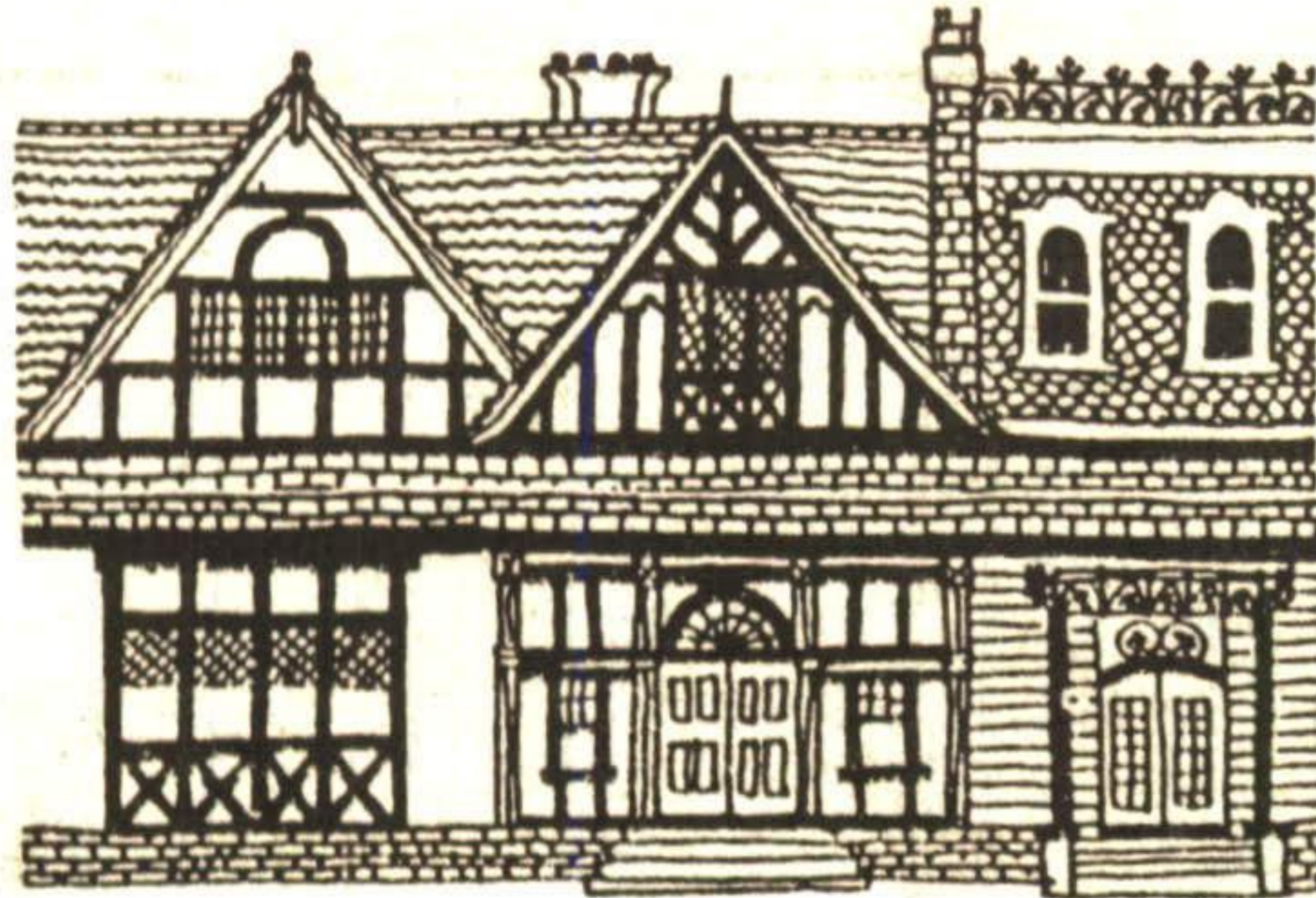
1. Know what is covered by the province - look for a plan to compliment what is not covered. Also notify them of your vacation so that your absence is not misinterpreted and your coverage cut off.
2. What types of coverage does this plan include?
3. Does the company have a toll free number, worldwide phone number which can be accessed 24

hours a day.

4. Should you become ill, will you have to pay for the health care you receive and then apply for reimbursement?

In general, travellers need to compare health coverage plans to determine which one best suits their needs prior to purchasing one.

For information on travel insurance packages call or visit a travel agency or drop in to Acton Social Services and Information Centre (ASSIC), 19 Willow St. North, Acton or call us at 853-3310.



CHATEAU RESTAURANT

367 Guelph Street (Hwy. #7)
Georgetown, Ontario

Christmas Party Specials

- | | | |
|----|---|---------|
| #1 | PRIME ROAST BEEF: <i>Au Jus</i> | \$13.95 |
| #2 | ROAST TURKEY, <i>Served with -
Dressing, Gravy, Cranberry Sauce, Mashed Potatoes</i> | \$ 9.95 |
| #3 | 10 oz. NEW YORK STEAK, <i>Served with -
Mushrooms or Peppercorn Sauce</i> | \$13.95 |
| #4 | TWO BROILED BONELESS CHICKEN BREASTS,
<i>Served with - Cranberry Sauce</i> | \$11.95 |
| #5 | 7 oz. SIRLOIN STEAK, <i>Served with -
Mushrooms or Peppercorn Sauce</i> | \$10.95 |
| #6 | CHICKEN & RIBS COMBO,
<i>(1/4 BBQ Chicken & Half Rack of Back Ribs)</i> | \$11.95 |
| #7 | CHICKEN NEPTUNE
<i>(Breaded Chicken Breast filled with
Scallops & Lobster Meat topped with
Cheese Sauce)</i> | \$11.95 |



*All Dinners Include: choice of Soup, Caesar or
All you can eat Salad Bar
Choice of Potatoes or Rice
And Choice of Cherry or Apple Pie or
Pudding of the day or Ice Cream
and Beverage*



ONLY ONE DINNER CHOICE PER GROUP OF TEN TO FIFTY AT THESE PRICES:
WE DO ISSUE SEPARATE CHEQUES UPON REQUEST!
TAXES AND GRATUITY ARE EXTRA:

We can accommodate any group from 10 - 50 people

For Special Rates Call and Ask for Terry or George

877-7629

*Our Gift Certificates make an excellent Christmas Gift
Sold in any Denomination*

Buy \$100.00 or more and get an additional
10% FREE