

**MORTGAGE RATES THIS WEEK RATES TAKEN SEPT. 25, 1992**

Institutions	Variable	6 Mths.	1 Yr.	2 Yrs.	3 Yrs.	4 Yrs.	5 Yrs.
Bank of Montreal	6-1/4	5.90 6-3/4op	6-1/4 7-1/4op	6-7/8	7-3/4	8	8-1/2
Canadian Imperial	6-1/4	6-3/4op	6-1/4 7-1/4op	6-7/8	7-3/4	8	8-1/2
Hongkong Bank	6-1/4	5-7/8 6-3/4op	6-1/4 7-1/4op	6-7/8	7-3/4	8	8-1/2
Laurentian Bank	n/a	5-7/8 7op	6-1/4 7-1/4op	6-7/8	7-3/4	8	8-1/2
National Bank	n/a	5.90 6-3/4op	6-1/4 7-1/4op	6-7/8	7-3/4	8	8-1/2
Royal Bank	6-1/4	5.90 6-7/8op	6-1/4 7-1/4op	6-7/8	7-3/4	8	8-1/2
Scotiabank	6-1/4	5.90 6-3/4op	6-1/4 7-1/4op	6-7/8	7-3/4	8	8-1/2
Toronto-Dominion	6-1/4	5.90	6-1/4 7-1/4op	6-7/8	7-3/4	8	8-1/2
Cabot Trust	n/a	6-1/8	6-1/4 7-1/4op	6-7/8	7-3/4	8	8-1/2
Canada Trust	n/a	5-3/4 6-3/4op	6-1/4	6-7/8	7-3/4	8	8-1/2
Central-Guaranty Trust	n/a	5.90 6-3/4op	6-1/4 7-1/4op	6-7/8	7-3/4	8	8-1/2
Co-Operative Trust	n/a	5.90 6-3/4op	6-1/4 7-1/4op	6-7/8 7-3/4op	7-3/4 8-3/4op	8	8-1/2
General Trust	n/a	5-7/8 6-3/4op	6-1/4 7-1/4op	6-7/8	7-3/4	8	8-1/2
Household Trust	n/a	7	7	7-1/2	8-1/4	8-1/4	8-3/4
Jet Power Credit Union	6-1/4	6-3/4op	6-1/4op	7op	8	8-1/4	8-3/4
Montreal Trust	n/a	5.90 6-3/4op	6-1/4 7op	6-7/8	7-3/4	8	8-1/2
National Trust	6-1/2	5.90	6-1/4 7-1/4op	6-7/8	7-3/4	8	8-1/2
Premier Trust	n/a	5.90	6-1/4 7-1/4op	6-7/8	7-3/4	8	8-1/2
Preneur Trust	n/a	6 6-1/2op	6-1/4 6-3/4op	7 7-1/2op	7-3/4	8-1/4	8-3/4
Royal Trust	n/a	5.61 6-3/4op	6-1/4 7op	6-7/8	7-5/8	8	8-1/2

Prepared by Fiscal Agents.  
 Notes: \*\*Interest rate charged subject to adjustment during term of mortgage. \*Please consult institutions for term of years available.  
 All rates are prime rates and subject to change without notice.  
 R.O.R. = RATES ON REQUEST R/O = RENEWALS ONLY 1/8 - .125  
 op = OPEN N/A - NOT APPLICABLE 3/8 - .375  
 -- NOT QUOTING 5/8 - .625  
 7/8 - .875

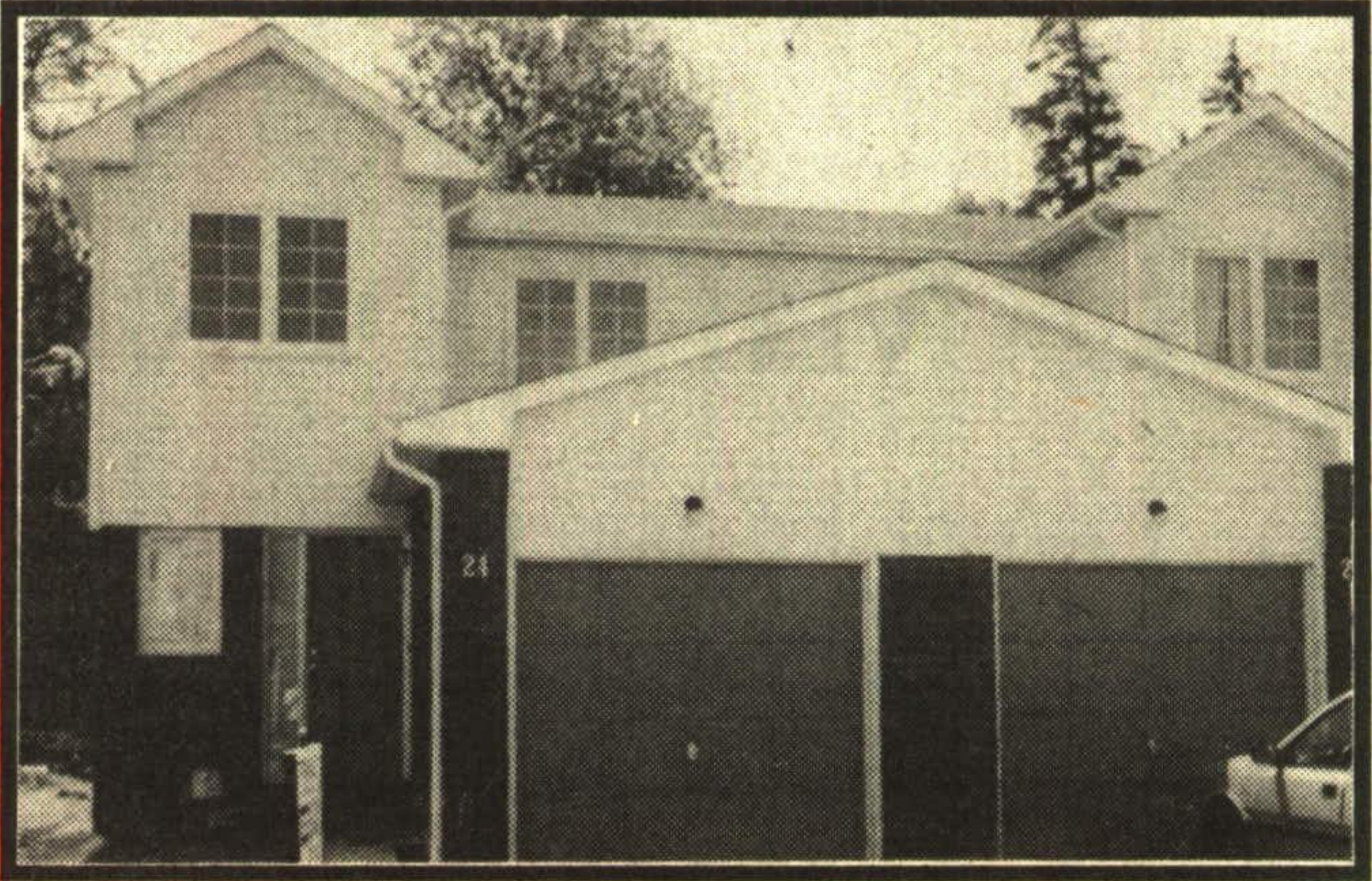
**Royal LePage Real Estate Services Ltd.**  
 170 Guelph St. GEORGETOWN  
**ROYAL LEPAGE**  
**877-0173 874-3068**

**KINGSMILL ON THE CREDIT - \$139,900**



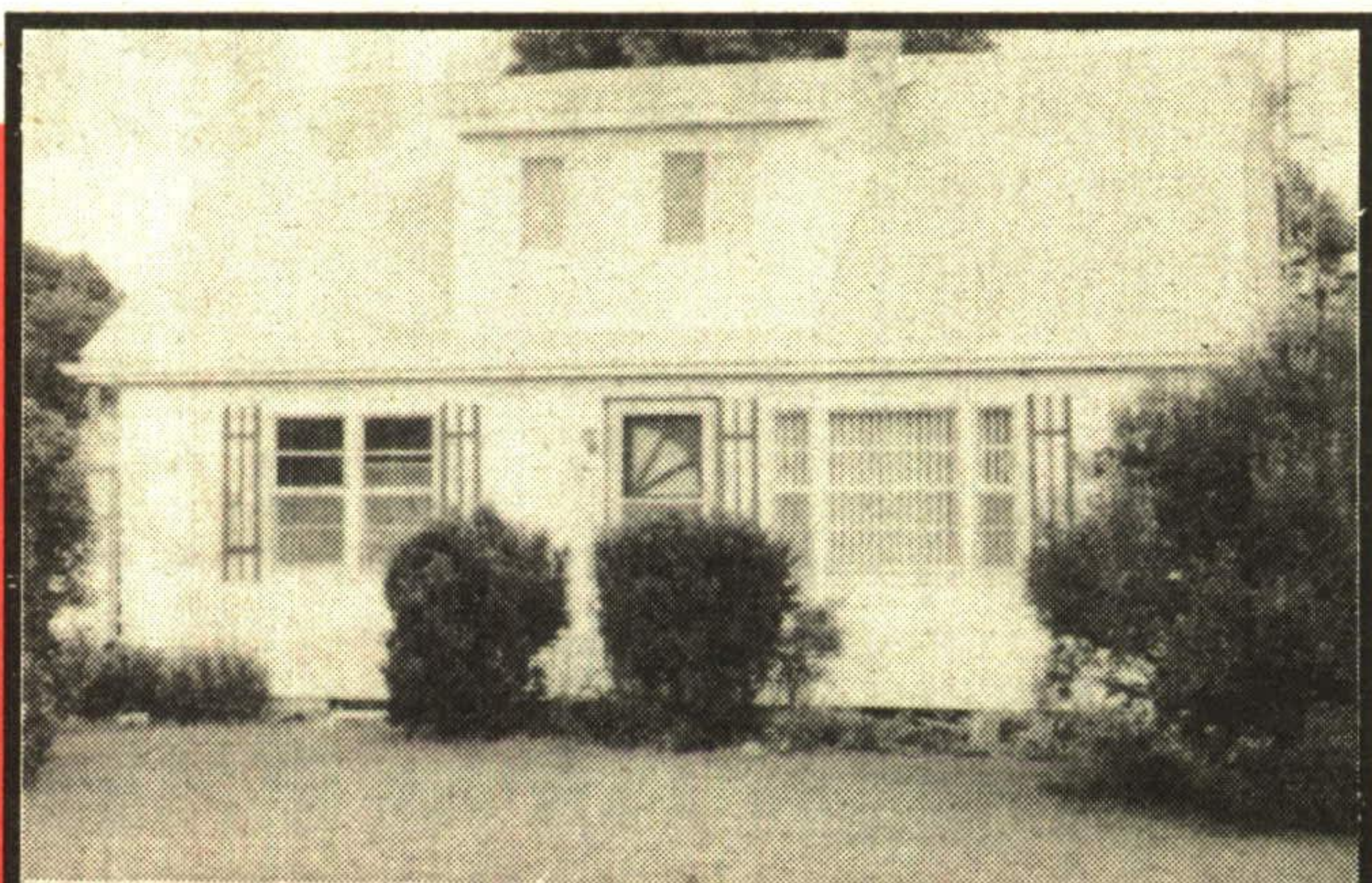
This open concept Mulberry model has a walkout from the kitchen to a deck with fabulous view. 3 bedroom plan with 1 1/2 baths and convenient inside access to spacious garage. Beautifully decorated in neutral colors. Move right in. 1-36

**KINGSMILL ON THE CREDIT - \$139,900**



This spacious 2 bedroom Mulberry model has a five piece bathroom with ensuite privileges from both bedrooms. A 2 pc bathroom on the main level and a walkout from the kitchen to private greenbelt. Come see this end unit today! 1-37

**STOP! CIRCLE THIS AD - \$137,000**



If you have been waiting for an affordable detached home, this is it! 3 bedrooms, high efficiency woodstove in living room, hardwood floors and new broadloom in bedrooms. Large eat-in kitchen. All on an extra large lot. Call today for all the details. 5-39

**INVESTMENT OPPORTUNITY**

This is an opportunity to acquire a prime corner property in Acton consisting of two buildings with a total of six rental units. Income from rents and good potential for future development. Call today for all the details.



**DEAN JACKSON**  
 Sales Representative\*  
**877-8192**  
 Res.



UNICEF is committed to eradicate illiteracy by the year 2000. This Halloween support UNICEF and help make education a reality for everyone!



**This Halloween Support**

**Countrywide**

ALL PRO REALTY INC.  
 ...the obvious choice 873-3377 874-3057

24 HOUR PAGER  
 Countrywide ALL PRO REALTY INC.  
 Independent Member Broker



**NEW LISTING - NEW HOME**

Starting or retiring this sharp new townhome is a great move! Open concept, end unit in neutral decor offers fridge and stove, patio doors in eating area, 2 baths and garage. \$139,000. Dial Dora MacKinnon\*\* for details.

CW92-143



Dial  
 Dora MacKinnon  
 Associate Broker\*\*  
 for details  
**873-3377 or 874-3057**

