

**MORTGAGE RATES THIS WEEK
RATES TAKEN SEPT. 25, 1992**

Institutions	Variable	6 Mths.	1 Yr.	2 Yrs.	3 Yrs.	4 Yrs.	5 Yrs.
Bank of Montreal	6-1/4	5.90 6-3/4op	6-1/4 7-1/4op	6-7/8	7-3/4	8	8-1/2
Canadian Imperial	6-1/4	6-3/4op	6-1/4 7-1/4op	6-7/8	7-3/4	8	8-1/2
Hongkong Bank	6-1/4	5-7/8 6-3/4op	6-1/4 7-1/4op	6-7/8	7-3/4	8	8-1/2
Laurentian Bank	n/a	5-7/8 7op	6-1/4 7-1/4op	6-7/8	7-3/4	8	8-1/2
National Bank	n/a	5.90 6-3/4op	6-1/4 7-1/4op	6-7/8	7-3/4	8	8-1/2
Royal Bank	6-1/4	5.90 6-7/8op	6-1/4 7-1/4op	6-7/8	7-3/4	8	8-1/2
Scotiabank	6-1/4	5.90 6-3/4op	6-1/4 7-1/4op	6-7/8	7-3/4	8	8-1/2
Toronto-Dominion	6-1/4	5.90	6-1/4 7-1/4op	6-7/8	7-3/4	8	8-1/2
Cabot Trust	n/a	6-1/8	6-1/4 7-1/4op	6-7/8	7-3/4	8	8-1/2
Canada Trust	n/a	5-3/4 6-3/4op	6-1/4	6-7/8	7-3/4	8	8-1/2
Central-Guaranty Trust	n/a	5.90 6-3/4op	6-1/4 7-1/4op	6-7/8	7-3/4	8	8-1/2
Co-Operative Trust	n/a	5.90 6-3/4op	6-1/4 7-1/4op	6-7/8 7-3/4op	7-3/4 8-3/4op	8	8-1/2
General Trust	n/a	5-7/8 6-3/4op	6-1/4 7-1/4op	6-7/8	7-3/4	8	8-1/2
Household Trust	n/a	7	7	7-1/2	8-1/4	8-1/4	8-3/4
Jet Power Credit Union	6-1/4	5-3/4op	6-1/4op	7op	8	8-1/4	8-3/4
Montreal Trust	n/a	5.90 6-3/4op	6-1/4 7op	6-7/8	7-3/4	8	8-1/2
National Trust	6-1/2	5.90	6-1/4 7-1/4op	6-7/8	7-3/4	8	8-1/2
Premier Trust	n/a	5.90	6-1/4 7-1/4op	6-7/8	7-3/4	8	8-1/2
Prenor Trust	n/a	6 6-1/2op	6-1/4 6-3/4op	7 7-1/2op	7-3/4	8-1/4	8-3/4
Royal Trust	n/a	5.61 6-3/4op	6-1/4 7op	6-7/8	7-5/8	8	8-1/2

Prepared by Fiscal Agents.

Notes: **Interest rate charged subject to adjustment during term of mortgage. *Please consult institutions for term of years available. All rates are prime rates and subject to change without notice.

R.O. = RENEWALS ONLY
N/A. = NOT APPLICABLE
R.O.R. = RATES ON REQUEST
op = OPEN
- = NOT QUOTING

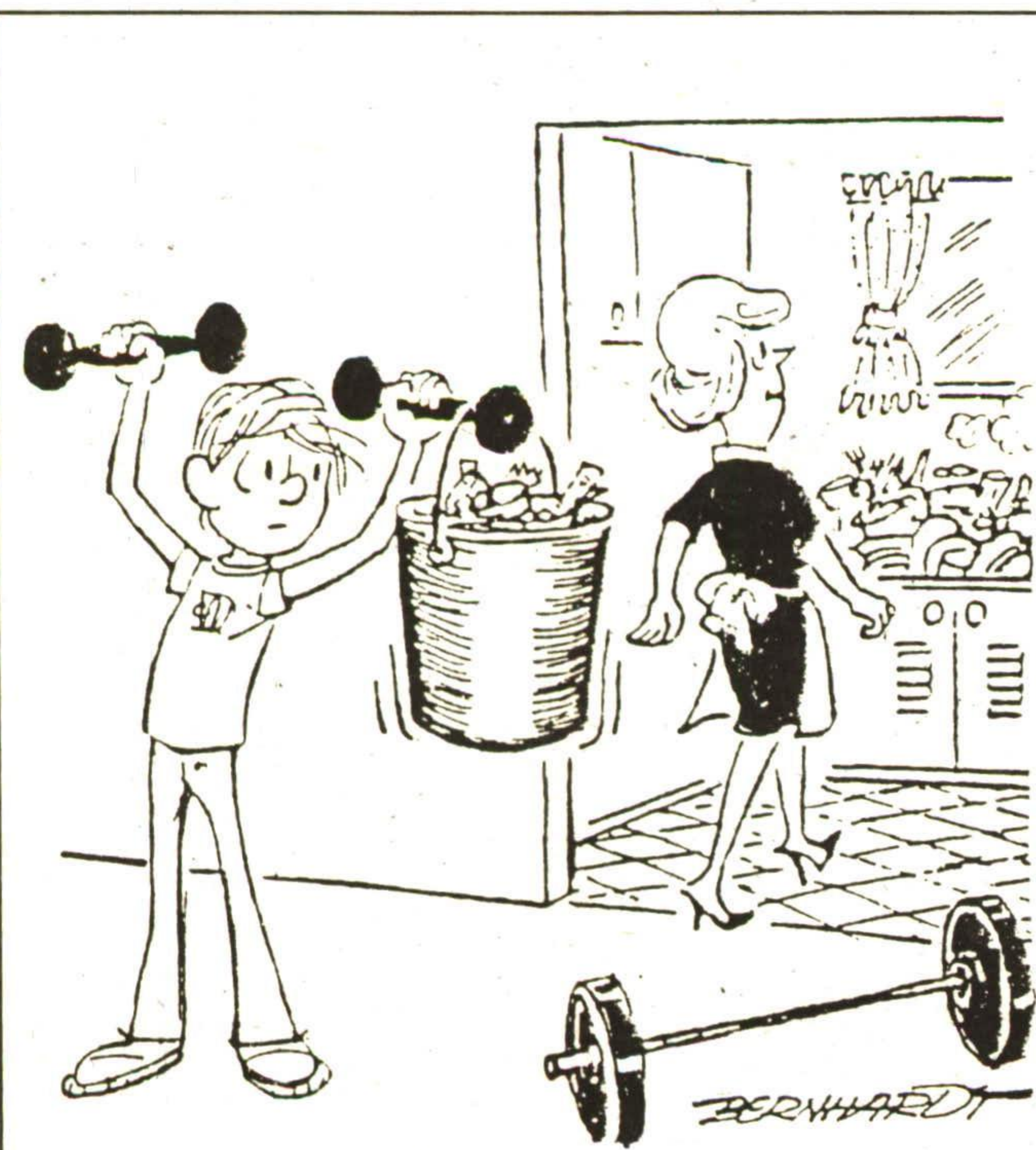
1/8 - .125 5/8 - .625
3/8 - .375 7/8 - .875

GORDON B.
Dawe

Gord Dawe Broker/Owner*** 856-4195 Alex Glenn Sales Rep.* 853-0923
Suzanne Robertson Sales Rep.* 856-2596 Michele Dawe Sales Rep.* 856-4195
25 MILL ST. E., ACTON 853-3790 Multiple Listing Service



**GEORGETOWN COUNTRY
2 ACRES \$299,000**
This quality built brick home offers privacy plus. Fireplace in sunken family room, sunken living room, walkout to 16' x 24' cedar wrap around deck. Oak kitchen, ceramic foyer - upgrades everywhere!! D92-133
**Open House Sat. 2-4 p.m.
Call Michele Dawe* or
Suzanne Robertson*
at 853-3790**



ROOS TRAVEL AGENCY

232 GUELPH ST., UNIT 10, GEORGETOWN
873-2000

Royal LePage Real Estate Services Ltd.

170 Guelph St. GEORGETOWN

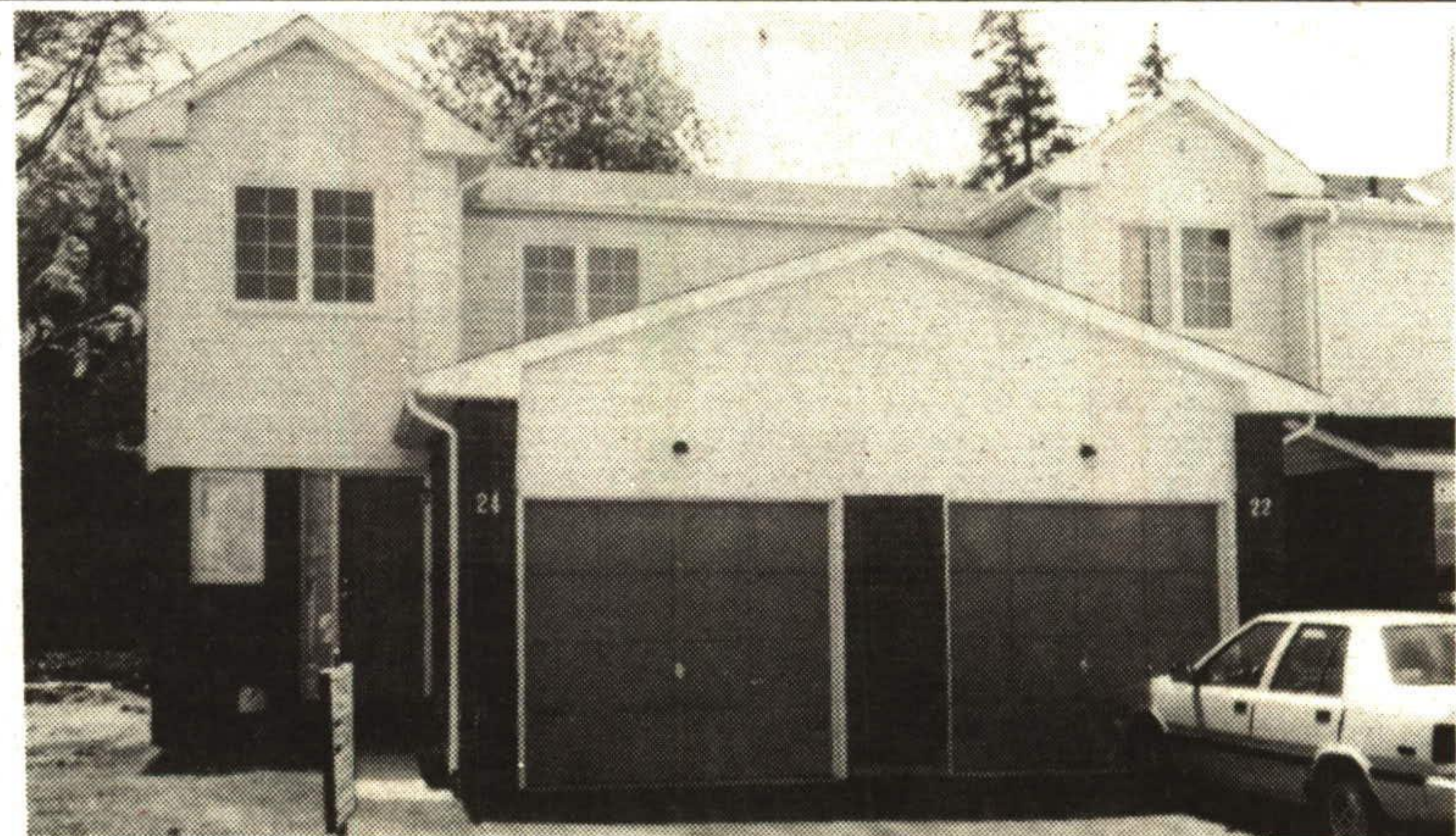
ROYAL LEPAGE

877-0173 874-3068



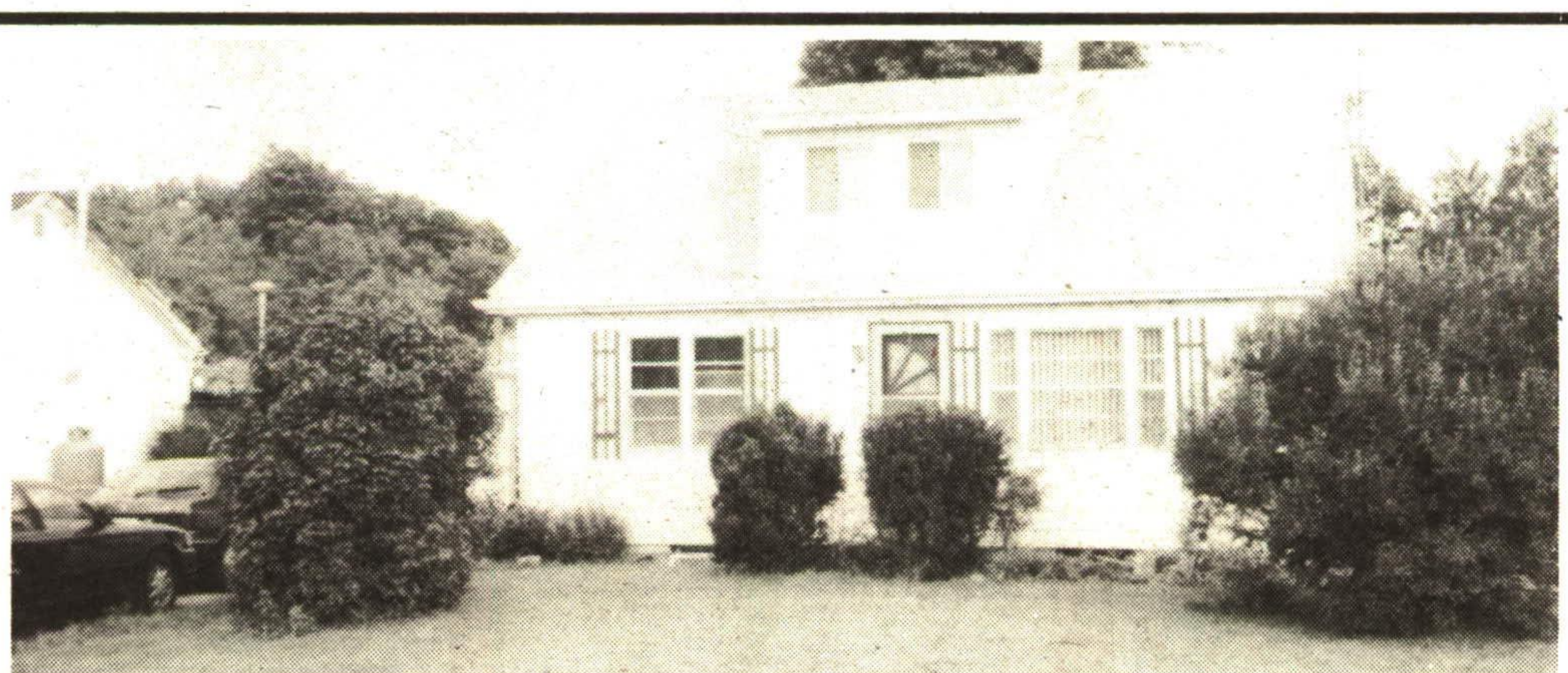
KINGSMILL ON THE CREDIT - \$139,900

This open concept Mulberry model has a walkout from the kitchen to a deck with fabulous view. 3 bedroom plan with 1 1/2 baths and convenient inside access to spacious garage. Beautifully decorated in neutral colors. Move right in. 1-36



KINGSMILL ON THE CREDIT - \$139,900

This spacious 2 bedroom Mulberry model has a five piece bathroom with ensuite privileges from both bedrooms. A 2 pc bathroom on the main level and a walkout from the kitchen to private greenbelt. Come see this end unit today! 1-37



STOP! CIRCLE THIS AD - \$137,000

If you have been waiting for an affordable detached home, this is it! 3 bedrooms, high efficiency woodstove in living room, hardwood floors and new broadloom in bedrooms. Large eat-in kitchen. All on an extra large lot. Call today for all the details. 5-39



DEAN JACKSON
Sales Representative*

877-8192 Res.