

NO HASSLE PRICE SALE

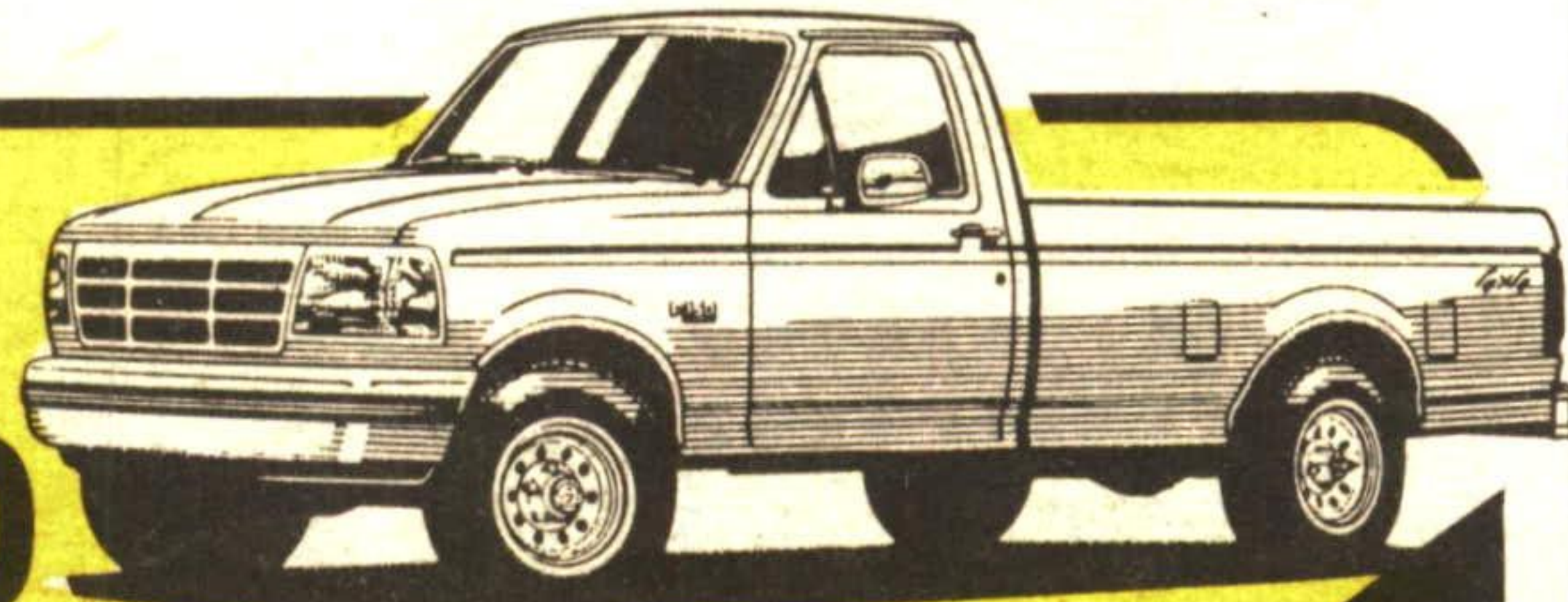
92 EXPLORER



Automatic O/D, air conditioning, sport captains chairs, privacy glass, AM/FM stereo/cass, luggage rack, clear coat paint, body side mouldings & more. #8217 MSRP \$25,952

\$22,499*

92 F150 REGULAR CAB SUPER CABS FLARESIDES IN STOCK



**EVERY VEHICLE WINDSHIELD PRICED.
3 DAYS ONLY OCT. 5, 6, 7TH**

CHOOSE
**1%
FINANCING
OR REBATES
UP TO
\$1500**



92 TAURUS LOADED, SEDANS, WAGONS 8 IN STOCK

92 TEMPO

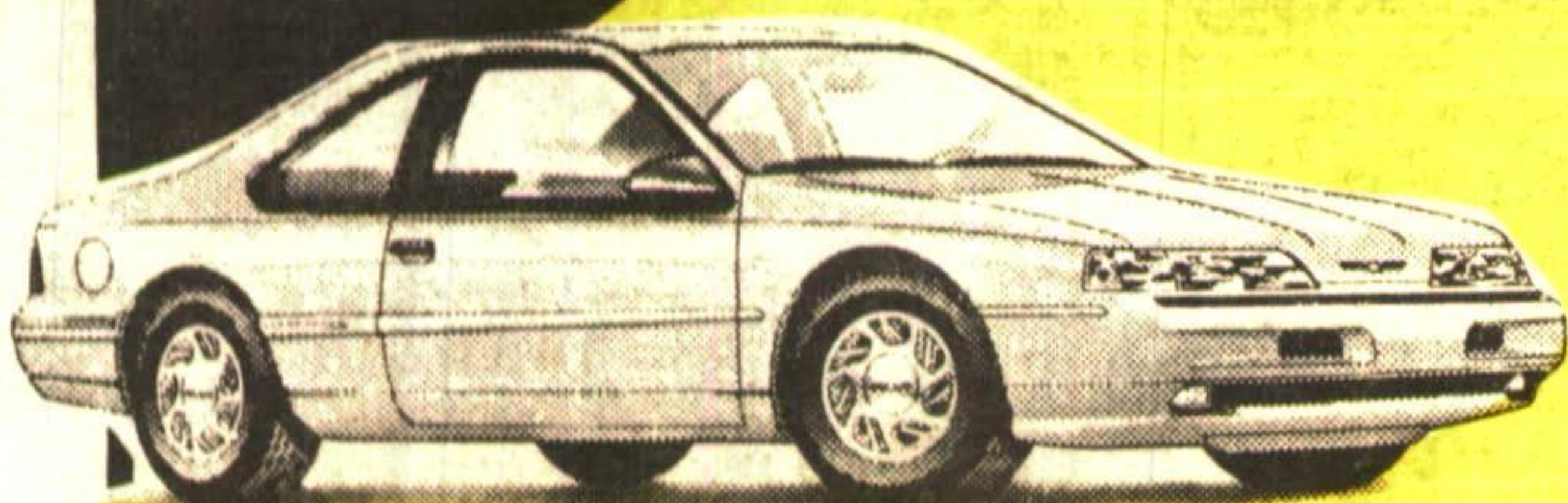


4 Door GL, automatic, air conditioning, power mirrors, power steering & brakes, AM/FM stereo, floor mats, electronic defroster.

FROM

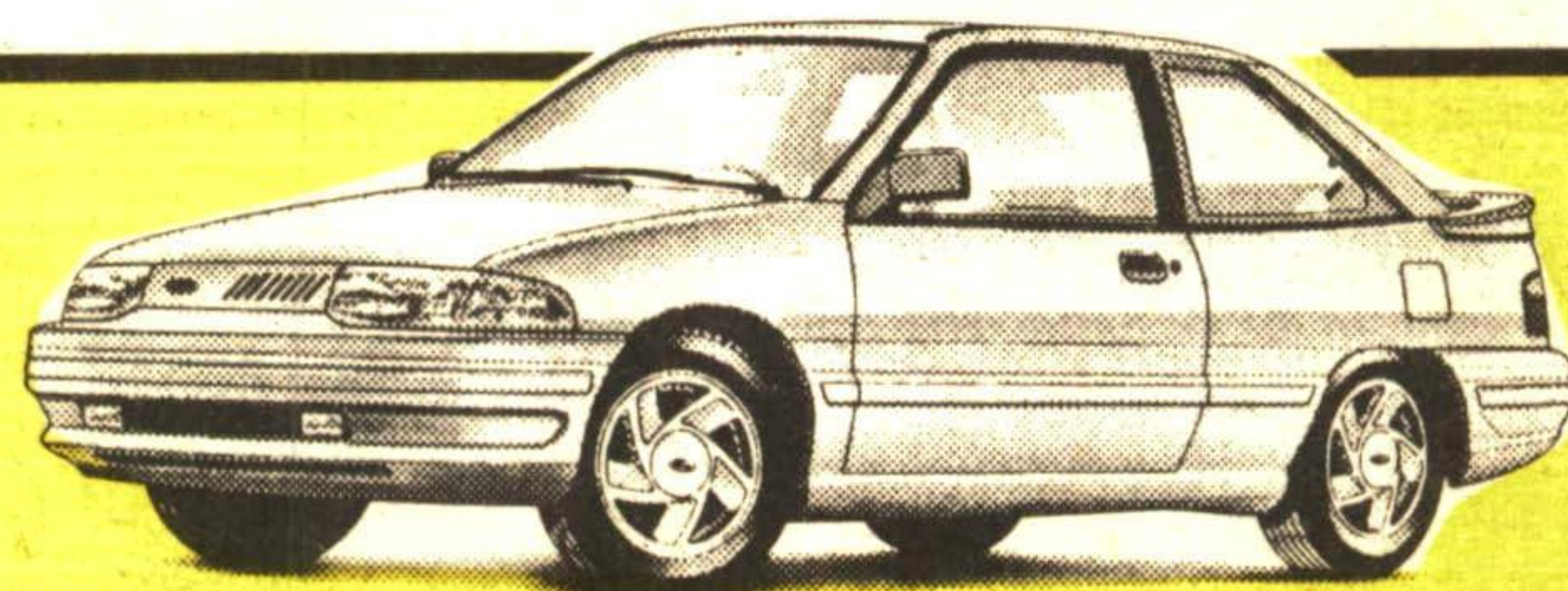
\$9,599*

92 THUNDERBIRD



AIR,
AUTO

ONLY 4 LEFT



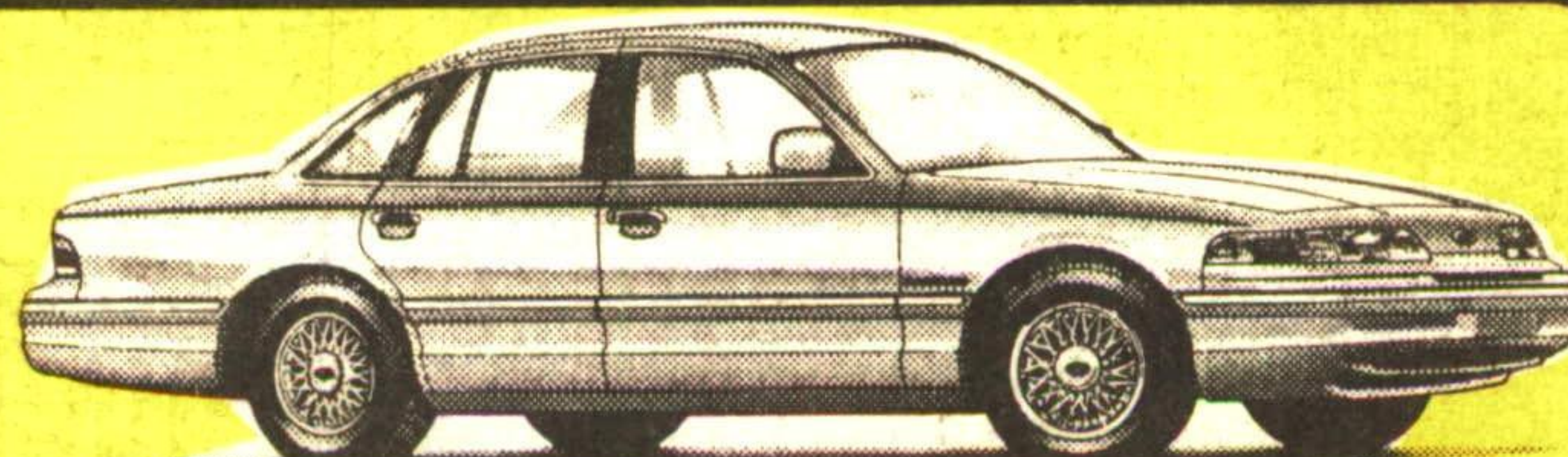
92 ESCORT

Air, Auto
ONLY 2 LEFT

92 MUSTANG



5 TO CHOOSE FROM



92 CROWN VICTORIA

Loaded with Air
7 TO CHOOSE FROM

*Rebate assigned to dealer. Freight, taxes, license extra. Financing 12 months

CAPITAL



QUALITY IS

JOB ONE!

HWY. #7, GEORGETOWN

Call
Now

873-1626

Number

1

In Customer
Satisfaction

GREEN THUMB GARDENING



By CHRISTINE COLE

SPRING IN YOUR HOME THIS WINTER

Spring flowering bulbs include some of the most beautiful of garden flowers. They are the focal point to the flower beds in the spring. However, you can have an earlier show of these flowers in your home this winter. All you have to do is force them to bloom earlier, in the winter instead of spring. To do this, pot the bulbs up in the fall, chill them for several weeks and then enjoy!

The easiest bulb to force indoors include Paperwhites, Crocus (especially 'Blue Pearl', 'Remembrances' and 'Pickwick'), Hyacinths, Tulips and Daffodils (especially 'King Alfred').

Bulbs that are prepared for winter blooming require well-drained soil, and the container should be twice as deep as the bulb being forced. Clay, ceramic, plastic and metal containers are all suitable for bulbs.

Place a few stones or broken clay pot pieces in the bottom of the pot. Add soil to half fill the container. Then, gently place the bulb in the soil, as this could damage the bulb and hinder its development. Tulips and daffodils need a small space between them (approx. one inch), but the smaller bulbs can be placed closer together. Add enough soil to bring it up to the tip of the bulb. Water well and then place the planted bulbs in a dark, cool (40°F-40°F) location for 12 to 15 weeks. A cool basement, garage or porch are suitable.

Essential root and bud development occur during this time, so keep the soil evenly moist. When the sprouts are one to three inches tall they can be moved to a warmer location (60°F).

In four to six days the container of forced bulbs should be ready to fill your home with spring beauty. For a succession of flowers fill several containers with bulbs and bring one container at a time out of cold storage.

Unlike other bulbs, Narcissi do not require any chilling or soil. These bulbs can be placed in a pot (without drainage hole) and filled with stones around the bulbs. Keep it evenly moist, and enjoy fragrant flowers this winter.

Pot up your bulbs this fall and force them to bring a little spring to your home.

Each week Christine Cole of Tuitman's Garden Centre and Landscaping, Highway 25, 1 mile south of Acton, 853-2480, will be presenting helpful tips and information to assist you in creating your garden show-place!

TUITMAN'S

GARDEN CENTRE

ACTON

853-2480