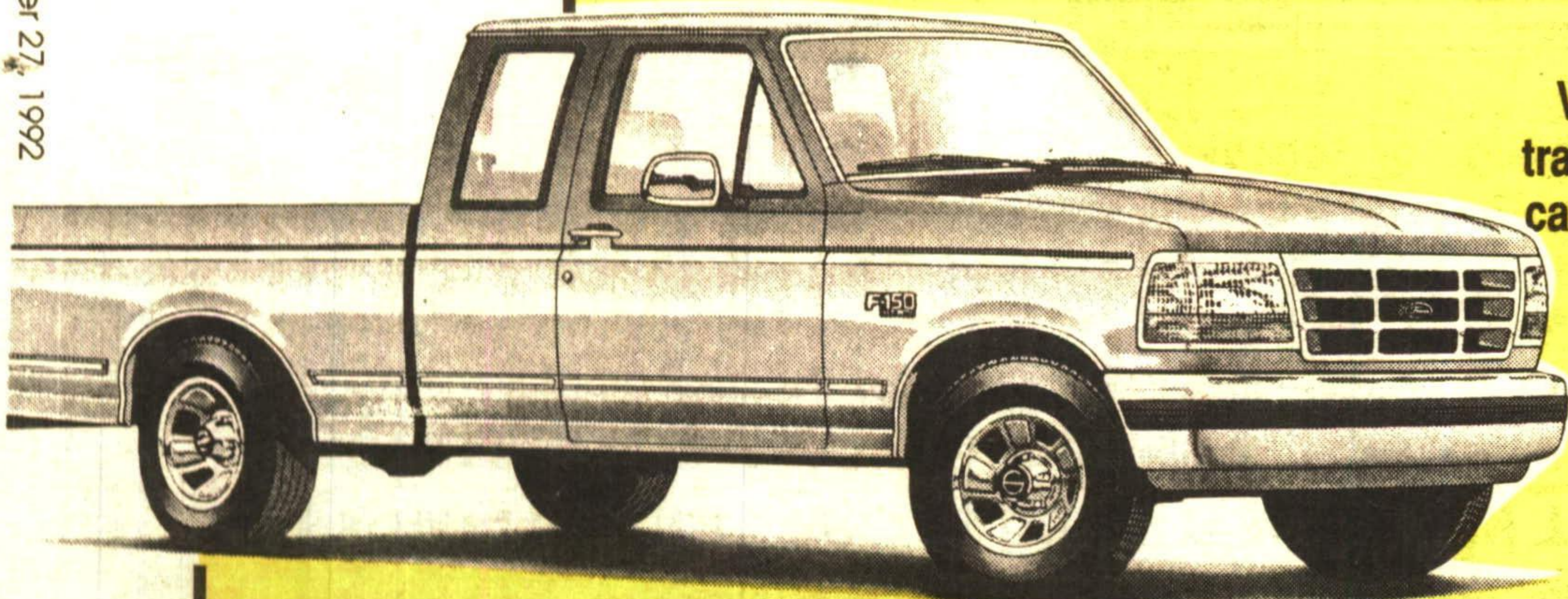


# WHY PAY MORE ELSEWHERE?

## 92 F150 SUPERCAB XLT



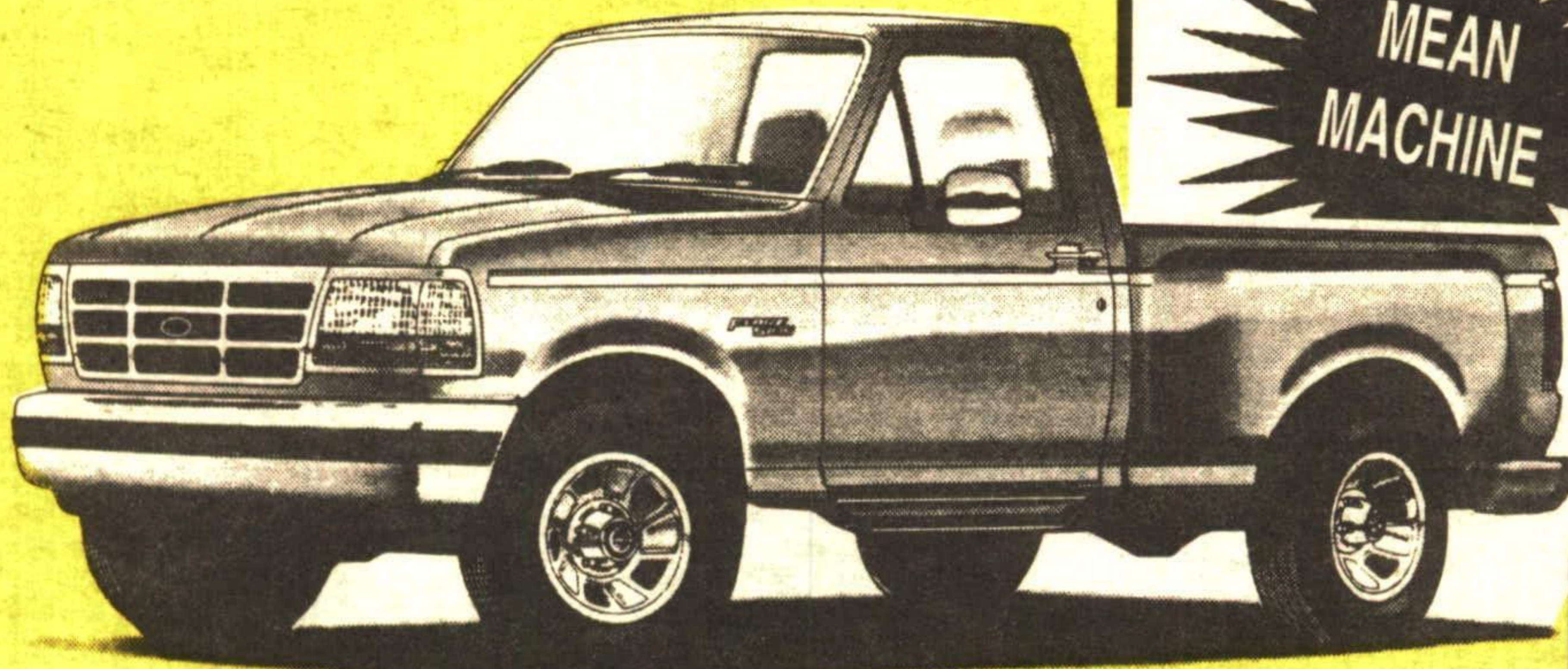
V8, auto O/D, air, pwr windows/locks, trailer towing package, speed/tilt, AM/FM cass, captains chairs, HD pkg and more.  
#82155 MSRP \$25,461

**SPECIAL PRICE \$19,992\***

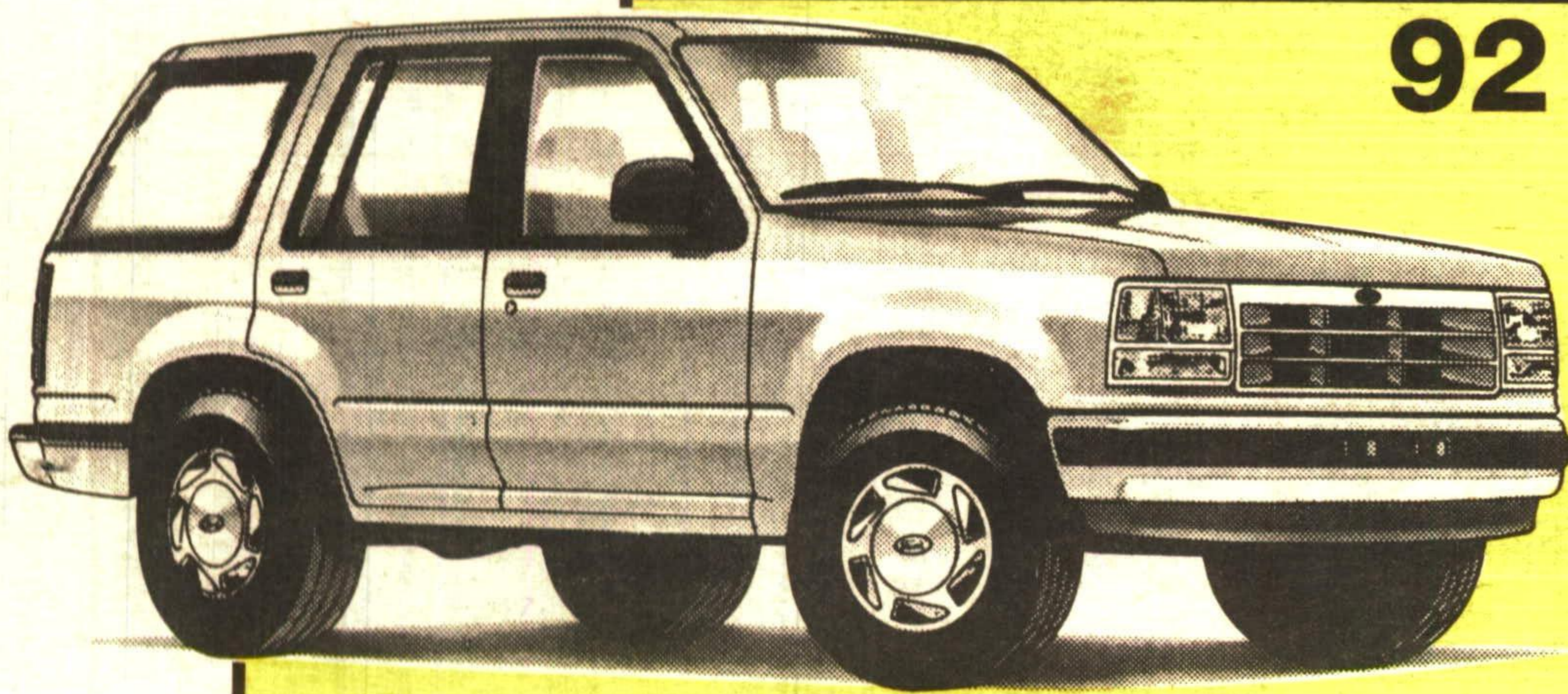
## 92 F150 4 X 4 FLARESIDE

V8, automatic, air conditioning, power windows/locks, tachometer, speed control, rear running boards, jet black, special road tires. #8271 MSRP \$25,284

**\$19,992\***



## 92 EXPLORER



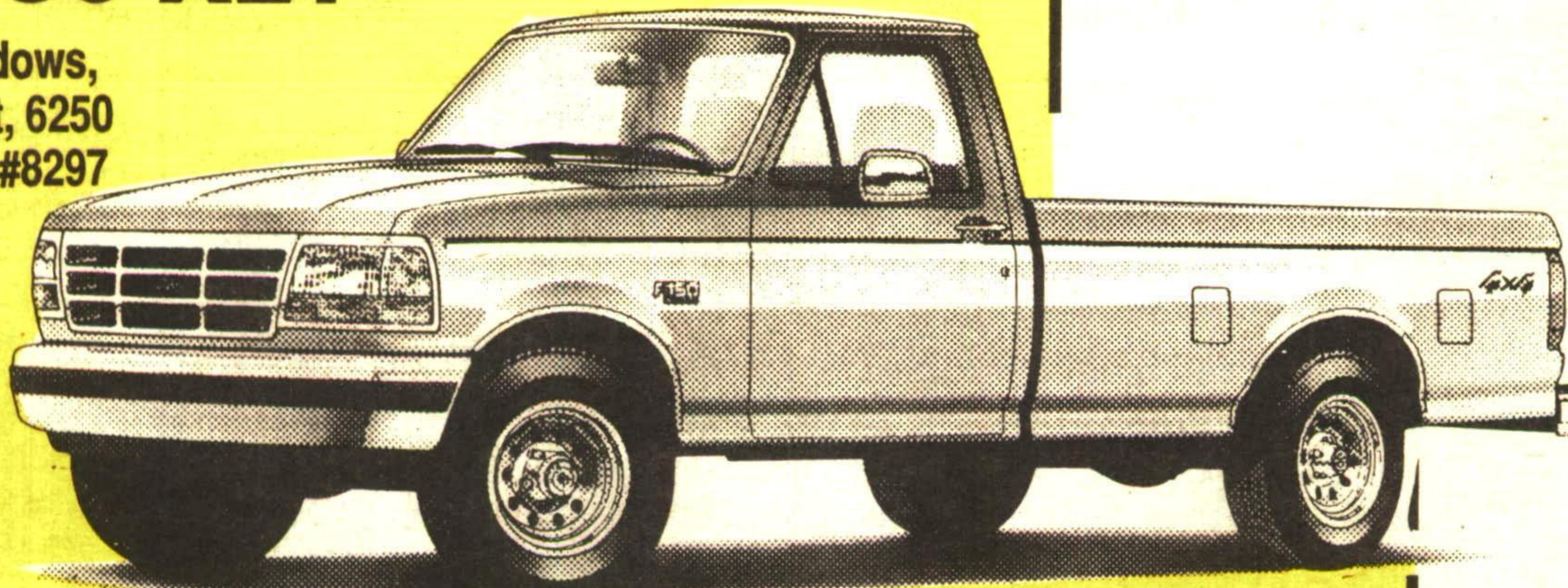
Automatic O/D, air conditioning, sport captains chairs, privacy glass, AM/FM stereo/cass, luggage rack, clear coat paint, body side mouldings & more.  
#8217 MSRP \$25,952

**\$23,500\***

## 92 F150 XLT

V8, automatic O/D, rear locks/windows, stereo/cass, camper pkg, speed/tilt, 6250 #GVW P235 tires, electric mirrors. #8297 MSRP \$23,090

**\$17,999\***



\*Rebate assigned to dealer, frt, taxes & lic. extra.

## GREEN THUMB GARDENING



By CHRISTINE COLE

### DISCOVER THE BEAUTY OF SPRING WITH BULBS

Spring flowering bulbs such as tulips, daffodils and crocuses are a refreshing and welcome sight each spring. They offer an abundance of color after a long winter.

Snowdrops are the first of the bulbs to push their white flowers through the soil in the spring.

These are soon followed by the more colorful crocuses and scullas (bell-shaped flowers). And later the most popular bulbs bloom: tulips, daffodils and hyacinths. But the less familiar bulbs should not be forgotten or avoided. They are just as easy to grow and add a splash of color throughout the spring and early summer. Many species of allium are available which generally bloom in early spring. Their flower is a large blue to purple ball borne on a large single stem. Their stately habit and large, long-lasting flower adds an unusual touch to the flower garden.

Fritillaria or crown imperial is another interesting bulb that deserves more recognition. Fritillaria grows approximately one foot tall and has checkered, nodding (pendulous) bell flowers in the spring. Unlike most other bulbs, fritillaria grows well in moist locations and should be planted about five inches deep.

Spring flowering bulbs should be planted from early to late fall. This permits them to produce a well-established root system before winter. A specially formulated fertilizer such as 9-9-6 Bulb Booster or Bonemeal should be incorporated into the soil prior to planting to increase root and blossom development.

A general rule is to cover bulbs about twice their own depth with soil. Tulips need about four inches for soil over them, and daffodils and fritillaria about five inches. Small bulbs such as crocus, sculla and grape hyacinth should be planted about two to three inches deep, and allium should be six to eight inches deep. Bulbs are most effective when displayed in a mass planting or in groups of five or more.

Have a beautiful spring by planting your bulbs this fall.

Each week Christine Cole of Tuitman's Garden Centre and Landscaping, Highway 25, 1 mile south of Acton, 853-2480, will be presenting helpful tips and information to assist you in creating your garden show-place!

**CAPITAL**



QUALITY IS

JOB ONE!

HWY. #7, GEORGETOWN

Call Now

**873-1626**

Number  
**1**  
In Customer Satisfaction

**TUITMAN'S GARDEN CENTRE**

ACTON  
853-2480