



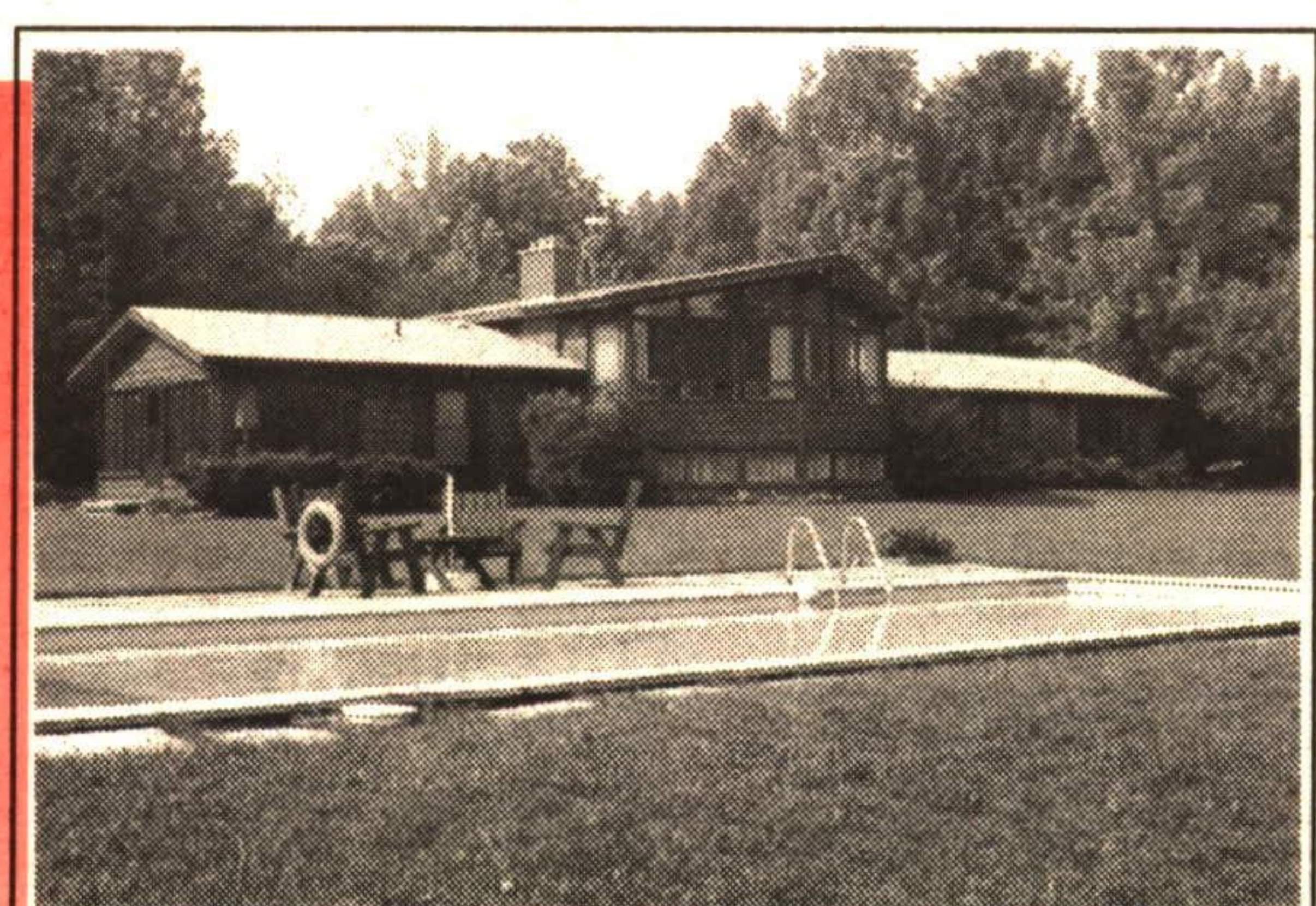
877-5211

and Ask for Donna Rae*

\$219,900

THE THREE "C"'S

Charming, character, country. 1 acre close to Ballinafad. Possible 5 bedrooms, \$219,900. Motivated vendor. Call Now Donna Rae* 877-5211. RM254-91



YOU BET

You'll love this lovely country home on a spectacular 8 acres. Within minutes of Ballinafad. Spacious immaculate cedar home with plenty of large windows overlooking the inground pool. \$312,000 for this gorgeous property is worth your call. Call Donna Rae, Sales Rep. at 877-5211. RM223-92

GORGEOUS COUNTRY PROPERTY
north of Georgetown
\$219,900.
BONUS 5% Mortgage for 2 years
Call Donna Rae* 877-5211 RM094-92

WOW!!!

\$279,000 Huge family home boasting executive taste throughout; sparkling inground pool with plenty of backyard left over. Quiet dead end street. Call Donna Rae* 877-5211. RM184-92

PICTURE PERFECT

3 bedroom sidesplit in town on a quiet, private crescent. Walk to mall, doctors and public schools. Immaculate 10++ throughout and includes upgrades such as a new roof and windows in '91. Call Donna Rae*. RM217-92

WORTH THE LOOK NOW

Large family home. Finished basement. Sunroom addition. Gorgeous deep deep deep fenced lot. 2 car garage. All this for \$179,900. Call Donna Rae* RM107-92

28 ACRES

Heated workshop, 300 sq. metres. Walkout from basement with 2nd kitchen and washroom (possible in-law), gorgeous property. Great location for horses.

REDUCED **\$239,900**

\$239,900.

Will buy you this gorgeous home with a unique design. 16' ceiling, skylight and 16' stone wall boasting an almonid painted woodstove. 4 bedrooms (large). 10' x 10' playhouse. Center fireplace dividing the living rm and dining rm. Donna Rae* 877-5211. RM183-92

THREE FAMILIES...

could easily live in this massive 3 family home on 5 acres in the country. Large country kitchen. 5 washrooms and private huge deck overlooking a pond. Immaculate and excellent decor throughout. 3 separate entrances - one for each family section. Call quickly. Donna Rae*, 877-5211. RM219-92

PLUS

300 sq. meter workshop. Carpenters and car buffs welcomed. Call Donna Rae* 877-5211 or Res. 873-1058. RM194-92

EXECUTIVE 10+++

Off Trafalgar and close to Steeles for commuting is this gorgeous stone home. Ceramics, plush carpets, hardwood floors and perfection throughout. The upstairs boasts a gorgeous inlaw suite that is as elegant as the main floor. The family room is a showpiece in itself. Great colour choices and decorating. **JUST MOVE IN.** Donna Rae*. RM215-92

THE BETTER WAY...

873-1058 RES.
24 Hour Service

RE/MAX Above the Crowd!

DONNA RAE*

RE/MAX SUBURBAN (91)
877-5211

*Sales Rep.



WOW! THE BETTER WAY... TO BUY OR TO SELL IN GEORGETOWN