

SAVE UP TO 50%*

JUST SELECT THE VEHICLE OF YOUR CHOICE AND WE'LL DEDUCT UP TO 50% OFF THE STICKER AND YOU PAY ON THE DIFFERENCE.

ON ANY NEW CAR OR TRUCK

1992 ESCORT LX

2 & 4 DOORS

\$8379*

MSRP \$14,202. STK. #2225

3 AVAILABLE



Air conditioning, power steering/brakes, Convenience Group., AM/FM Cassette, more

1992 RANGER

S/CAB XLT

\$11,025*

MSRP \$20,417 STK. #82138

3 AVAILABLE



4L Engine, Automatic, Air Conditioning, cruise, tilt, aluminum wheels, handling package, sliding windows, more

1992 MUSTANG LX

\$8749*

MSRP \$15,349. STK. #3201

8 AVAILABLE



Air Conditioning, Power Steering/Brakes, rear windows, aluminum wheels, floor mats, tinted glass, more.

1992 AEROSTAR

\$11,220*

MSRP \$22,439. STK. #8211

11 AVAILABLE



Automatic, 7 passenger, Captains Chair, air conditioning, AM/FM/Cassette, Console, luggage rack, cruise, tilt, more

1992 TEMPO GL

\$8622*

MSRP \$14,370. STK. #4282

32 AVAILABLE



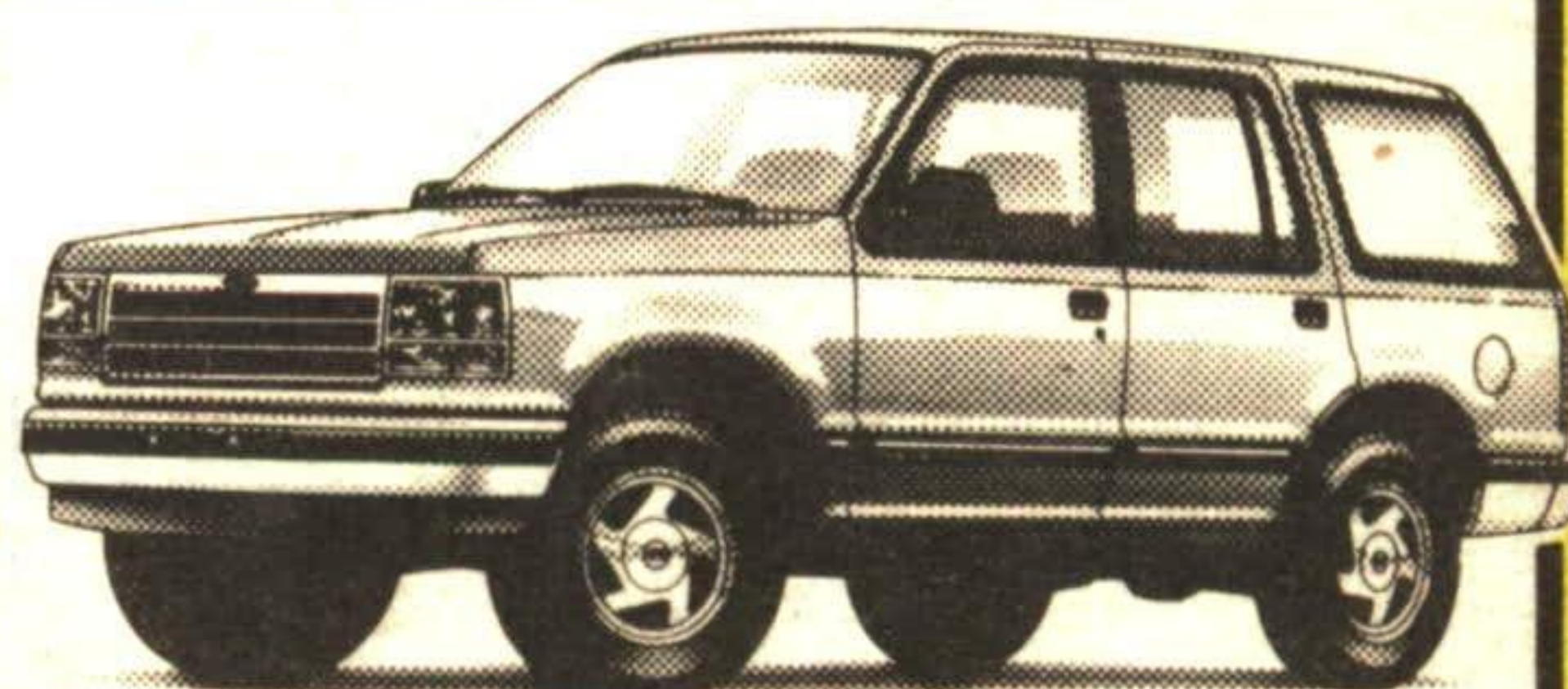
Automatic, Air Conditioning, Tu-tone Paint, Power Steering/Brakes, AM/FM, Tinted Glass, more.

1992 EXPLORER

\$10,640*

MSRP \$25,952. STK. #8217

5 AVAILABLE



4 X 4, Air Conditioning, Automatic, AM/FM/Cassette, Luggage Rack, Privacy Glass, Defroster, Captains Chairs, more

1992 THUNDERBIRD

\$12,033

MSRP \$21,487. STK. #6202

4 AVAILABLE



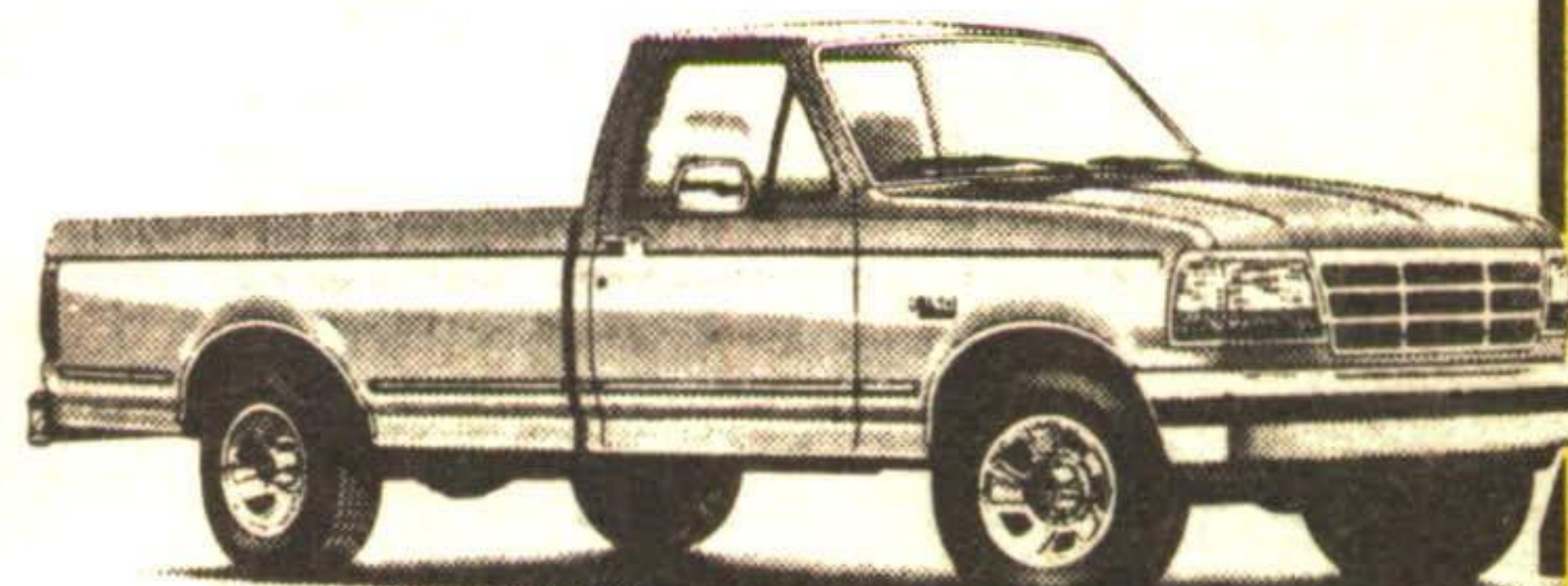
Air Conditioning, Power Seats, AM/FM/Cassette, Power Locks, Cruise Control, Tilt Steering, Aluminum Wheels, Floor Mats, more

1992 F-SERIES

\$12,238*

MSRP \$23,090. STK. #8297

15 AVAILABLE



XLT, Air Conditioning, Power Windows/Locks, Automatic, 5L Engine, Cruise, Tilt, Sliding Window, Camper Package, Tu-Tone Paint, more

***50% OFF PLAN IS A LEASE PURCHASE PROGRAM.**

O.A.C. 24 mos., 50,000 km. 6¢/km over. Plus taxes, license. Upon delivery Lessee pays first month in advance and a refundable security deposit.

CAPITAL



QUALITY IS JOB ONE!

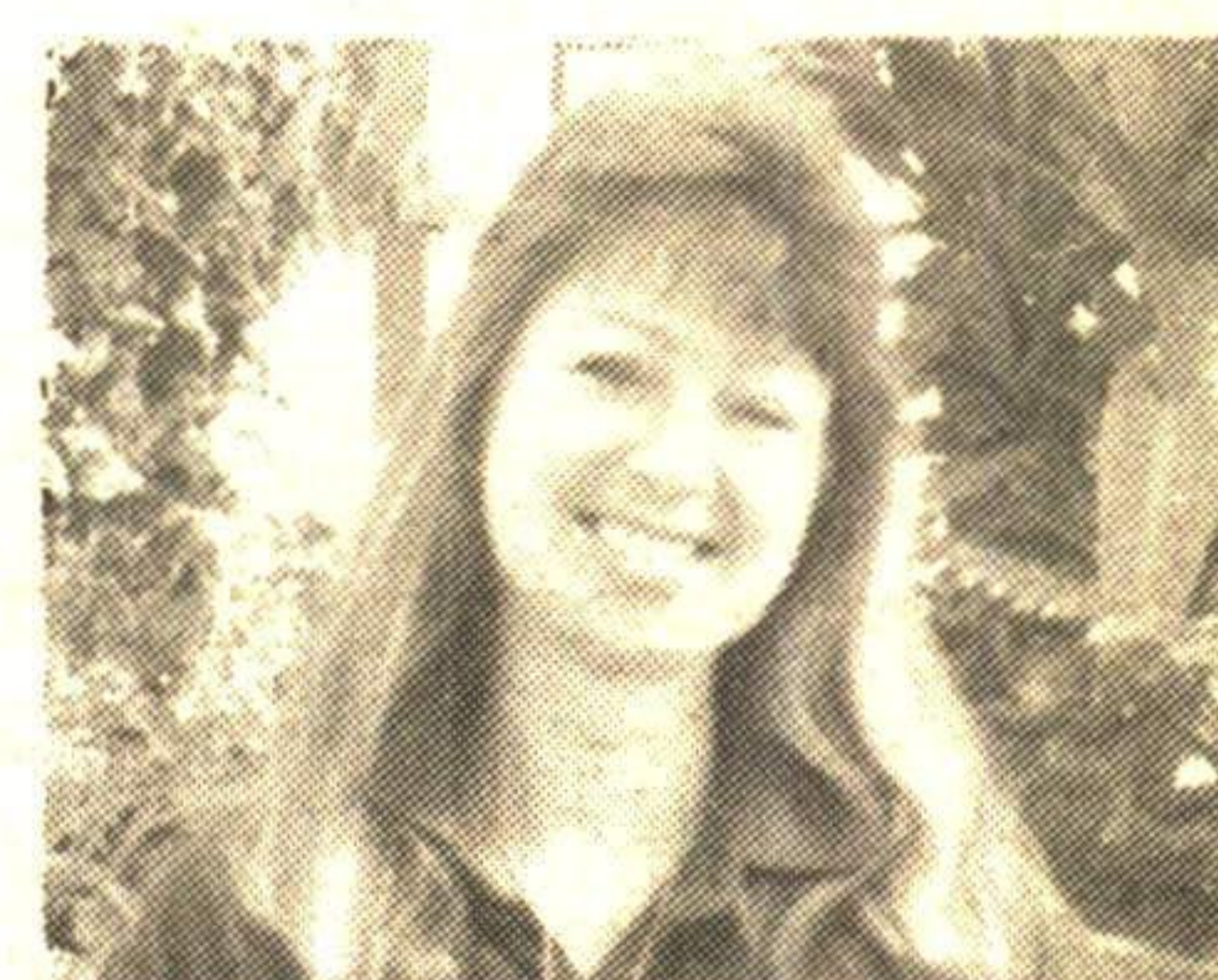
HWY. #7, GEORGETOWN

Call Now

873-1626

Number 1 In Customer Satisfaction

GREEN THUMB GARDENING



By **CHRISTINE COLE**

LATE SUMMER BLOOMERS

The end of summer does not have to be the end of flowers in your landscape. By this time many annuals, perennials and shrubs are beyond their prime or have finished blooming. This allows other plants to become the focal point in your yard. Late-season flowering shrubs can be the answer. Many display spectacular and showy flowers in late summer or early fall. As a result, these shrubs bridge the gap between summer flowers and a landscape dominated by autumn-colored leaves. They're an excellent way to brighten a corner of the yard in the growing season.

The following is a short collection of late-season flowering shrubs:

Pee Gee Hydrangea: Large shrub or small tree that quickly grows to 8 feet at maturity. It possesses incredibly large (6-8 inch long), cone shaped flowers in mid-August and lasts for several weeks. During this time their pure white flowers gradually change to pink.

Annabelle Hydrangea: This shrub also grows fast in a partially shaded location, but only reaches a height of 3-4 feet. By August the flowers are flat, white heads and about 4-5 inches in diameter.

Rose of Sharon (Hibiscus): This is also a tall but slender shrub (up to 7 feet tall) with distinctive upright branches. It has very attractive trumpet-shaped flowers (similar in size and shape to the Hibiscus grown as a houseplant) in shades of pale pink to purple and red. Blooms in August-September and performs best in full sun to partial shade.

Each week Christine Cole of Tuitman's Garden Centre and Landscaping, Highway 25, 1 mile south of Acton, 853-2480, will be presenting helpful tips and information to assist you in creating your garden show-place!

TUITMAN'S GARDEN CENTRE
ACTON
853-2480