

MORTGAGE RATES THIS WEEK

RATES TAKEN AUG. 14, 1992

| Institutions | Variable | 6 Mths. | 1 Yr. | 2 Yrs. | 3 Yrs. | 4 Yrs. | 5 Yrs. |
|------------------------|----------|------------------|------------------|------------------|--------|--------|--------|
| Bank of Montreal | 6-1/2 | 6-1/2 7-1/4op | 6-1/2 7-1/2op | 7-1/4 | 8 | 8-1/4 | 8-3/4 |
| Canadian Imperial | 6-3/4 | 7-1/4op | 6-1/2 | 7-1/4 | 8 | 8-1/4 | 8-3/4 |
| Hongkong Bank | 6-1/2 | 6-1/2 7-1/4op | 6-1/2 7-1/2op | 7-1/4 | 8 | 8-1/4 | 8-3/4 |
| Laurentian Bank | n/a | 6-3/4 7-1/4op | 6-1/2 7-1/2op | 7-1/4 | 8 | 8-1/4 | 8-3/4 |
| National Bank | n/a | 6-3/4 7-1/4op | 6-1/2 7-1/2op | 7-1/4 | 8 | 8-1/4 | 8-3/4 |
| Royal Bank | 6-1/2 | 6-1/2 7-1/2op | 6-1/2 7-3/4op | 7-1/4 | 8 | 8-1/4 | 8-3/4 |
| Scotiabank | 6-1/2 | 6-1/2 7-1/4op | 6-1/2 7-1/2op | 7-1/4 | 8 | 8-1/4 | 8-3/4 |
| Toronto-Dominion | 6-1/2 | 6-1/2 | 6-1/2 7-1/2op | 7-1/4 | 8 | 8-1/4 | 8-3/4 |
| Cabot Trust | n/a | 6-3/4 | 6-1/2 7-1/2op | 7-1/4 | 8 | 8-1/4 | 8-3/4 |
| Canada Trust | n/a | 6-1/2op | 6-1/2 | 7-1/4 | 8 | 8-1/4 | 8-3/4 |
| Central-Guaranty Trust | n/a | 6-1/2 7-1/4op | 6-1/2 7-1/2op | 7-1/4 | 8 | 8-1/4 | 8-5/8 |
| Co-Operative Trust | n/a | 6-1/2 7-1/4op | 6-1/2 7-1/2op | 7-1/4 8 | 8 9 | 8-1/4 | 8-3/4 |
| General Trust | n/a | 7 7-1/2op | 6-1/2 7-1/2op | 7-1/4 | 8 | 8-1/4 | 8-3/4 |
| Household Trust | n/a | 7-1/2 | 7-1/2 | 8-1/4 | 8-5/8 | 8-7/8 | 8-3/4 |
| Jet Power Credit Union | n/a | 7-1/4op | 6-3/4op | 7-1/2op | 8-1/4 | 8-1/2 | 8-3/4 |
| Montreal Trust | n/a | 6-5/8 7-1/8op | 6-1/2 7-1/2op | 7-1/4 | 8 | 8-1/24 | 8-3/4 |
| National Trust | 6-3/4 | 6 | 6-1/2 7-1/2op | 7-1/4 | 8 | 8-1/4 | 8-1/2 |
| Premier Trust | n/a | 6 | 6-1/2 7-1/2op | 7-1/4 | 8 | 8-1/4 | 8-1/2 |
| Prenor Trust | n/a | 6-1/2 6-3/4 | 6-1/2 7 | 7-1/4 7-3/4op | 8 | 8-1/4 | 8-1/2 |
| Royal Trust | n/a | 6.15 7-1/4op | 6-1/2 7-1/2op | 7-1/4 | 8 | 8-1/4 | 8-5/8 |

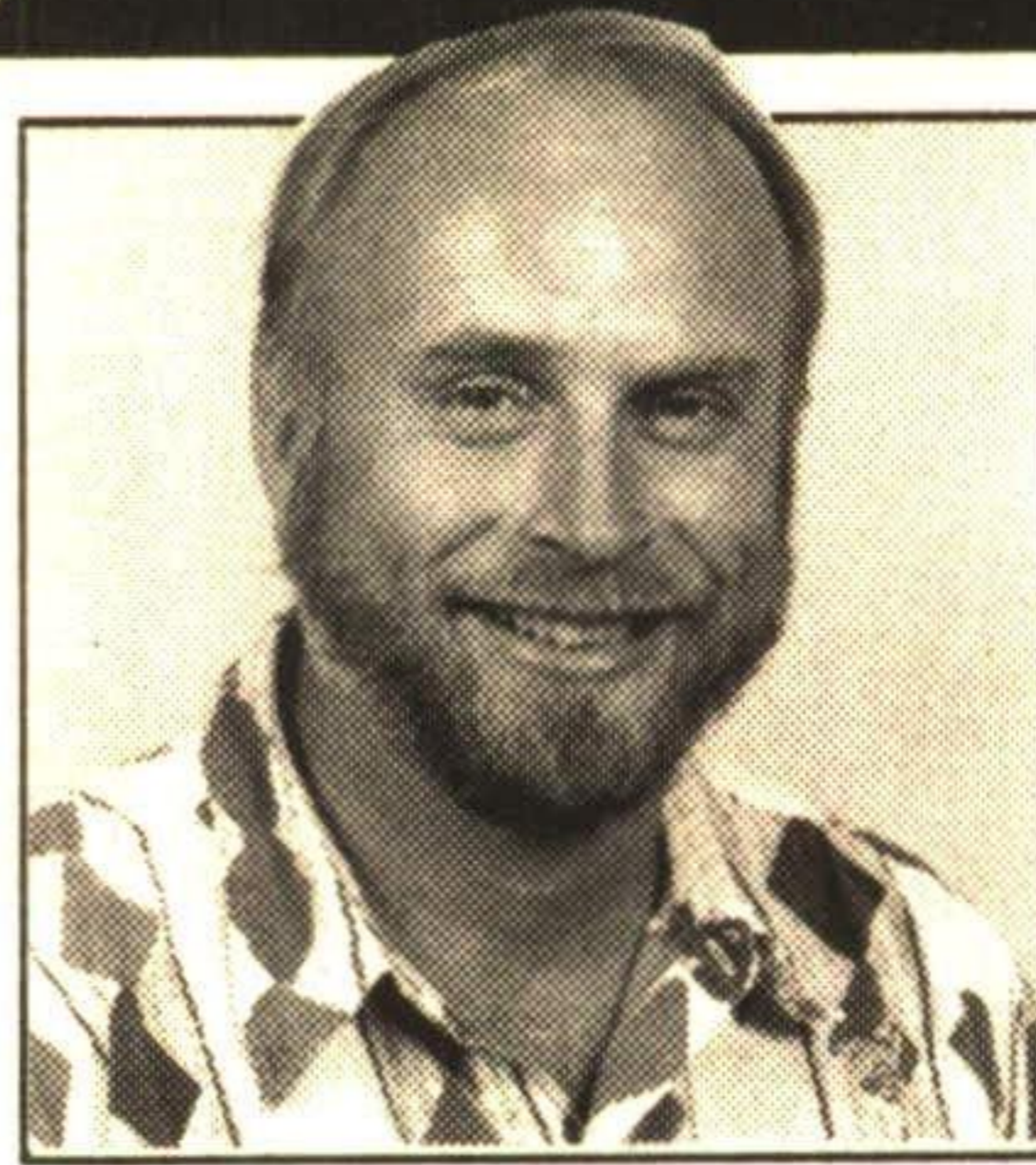
Prepared by Fiscal Agents.
Notes: *Interest rate charged subject to adjustment during term of mortgage. *Please consult institutions for term of years available. All rates are prime rates and subject to change without notice.

R.O.R. = RATES ON REQUEST
op = OPEN
- = NOT QUOTING
R/O = RENEWALS ONLY
N/A - NOT APPLICABLE
1/8 - .125
3/8 - .375
5/8 - .625
7/8 - .875

Countrywide

ALL PRO REALTY INC.
...the obvious choice
873-3377
Res: 873-4991

Countrywide
ALL PRO REALTY INC.
Independent Member Broker



DAVE KRAUSE
Sales Representative*

873-3377 Res. 873-4991

This is a great time to buy!!



FEATURE HOME

SPACIOUS COUNTRY GEM

Spacious home on edge of town. Barn including hydro & water suitable for stabling horses with fenced paddock. Living accommodations feature in-law suite and beautiful 7 acre lot close to small stream with an excellent view. Priced at \$239,900. Motivated vendor. CW92-119

OPEN HOUSE

August 30th - 1-4 p.m.

Directions: Hwy. 7 West (between Georgetown & Acton), 4th Line North 1-1/2 concessions to property.

Come and view this property with your host DAVE KRAUSE

Call for a FREE MARKET EVALUATION Of Your Home

Not intended to solicit properties already listed for sale.

JOHNSTON & DANIEL

Limited Realtor

14386 Creditview Rd., Cheltenham

(416) 838-3830 (416) 846-2270

(Brampton/Toronto Line)

*Sales Representatives



OPEN HOUSE

SUNDAY, AUG. 30th, 2-5 P.M.

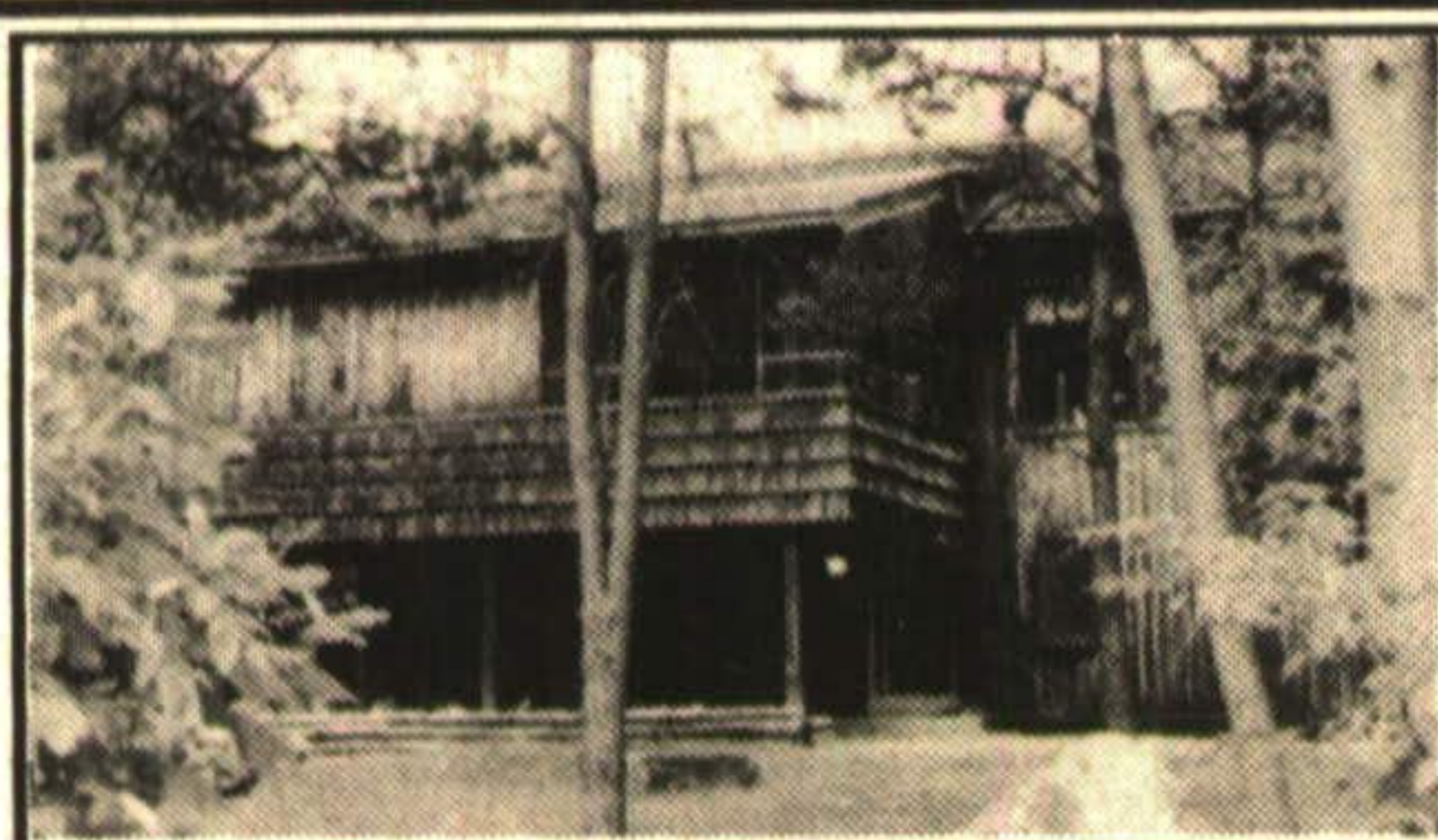


Superb country home on 4.7 ravine acres. 3 years new, this is truly a dream house, total luxury with a splendid bungalow design make this home a joy to visit - even nicer to own! Open concept with atrium opening to two level deck overlooking trees & ponds. Berber wool broadloom, long 'Hunt' windows with built-in mini blinds, glass slided free standing fireplace, bar, all white 'chefs' kitchen - loaded - walkout basement - unfinished, are but a few of the features of this home. Guest wing comprises 2 bedroom, each with window seat & very large fitted & mirrored closet and a 'greenhouse' bathroom. 2 pc. powder, main floor laundry and a dream of a master suite - you've just got to see it. 30' garage. Located on 6th Line Milton, west of Acton, south of #7. More details? Call **GLADYS SCOTT 416-838-3830 or Res. 416-838-0198**.

THE BEST HOMESITE IN THE WEST

\$250,000 - 5 acres on a quiet cul-de-sac in Campbellville, south of 401, in the 'bridle path' in fact! The well is in and there are mature trees & a year round stream - your investment is sound here.

Call **GLADYS SCOTT 416-838-3830 or Res. 416-838-0198**



WOODLAND WHISPERS - POND TOO!

Our bi-level cedar home is hidden in the trees almost 15 ac of them! This home is different - no basement, it's built on solid rock, 3 bedrooms at walk in level, small conservatory - laundry, bathroom with jacuzzi tub. Up is the living area - tree top level! Large LR, pleasant dining area, kitchen, two other rooms, plus screened summer room and 2 pc. FREE heat - you cut the wood, located on 6th line Milton, just south of 15th Sideroad. This is not a Panabode - it was custom designed, however it does need some help. Asking \$279,000. Try your offer with

GLADYS SCOTT* 416-838-3830 Res. 416-838-0198



CENTURY STONE - 45 ACRES - MOHAWK

Classic centre hall with all the endearing charm of another era. 3 generous bedrooms, 1-1/2 baths, farm size kitchen, beamed family room, separate dining with deep pine clad windows, efficient fireplace in living room, wide pine plank floors. Little red barn has three very good stall with water & hydro, 10 acres pasture, paddock, 25 acres good bush. Just a furlong or two from the race course. Asking \$699,000. Open to offers.

GLADYS SCOTT* 416-838-3830 Res. 416-838-0198

CLASSIC EXECUTIVE STYLE

Custom Built Beautiful Link Homes



SOLD

\$149,900

ONLY 2 LEFT

\$149,900

(To be built in Acton)

Artist's Concept



BROWN FAMILY Recommends!

Buy before Sept. and receive 4 New Appliances

6.75%
Interest Rates

Hurry, at this price they will not last!

Brand New Custom Built 1,200+ square foot Beautiful Homes which feature European kitchen, high vaulted ceilings, cathedral bay windows, stained glass entrance door, 3 bedrooms, etc., etc., etc. Priced to sell from \$149,900.

Call **Ed Bain** or **John Doris Architect**
Now at **(519) 853-3401** **(416) 878-5190**

Presented By
Halton Builders, Acton, Ont.