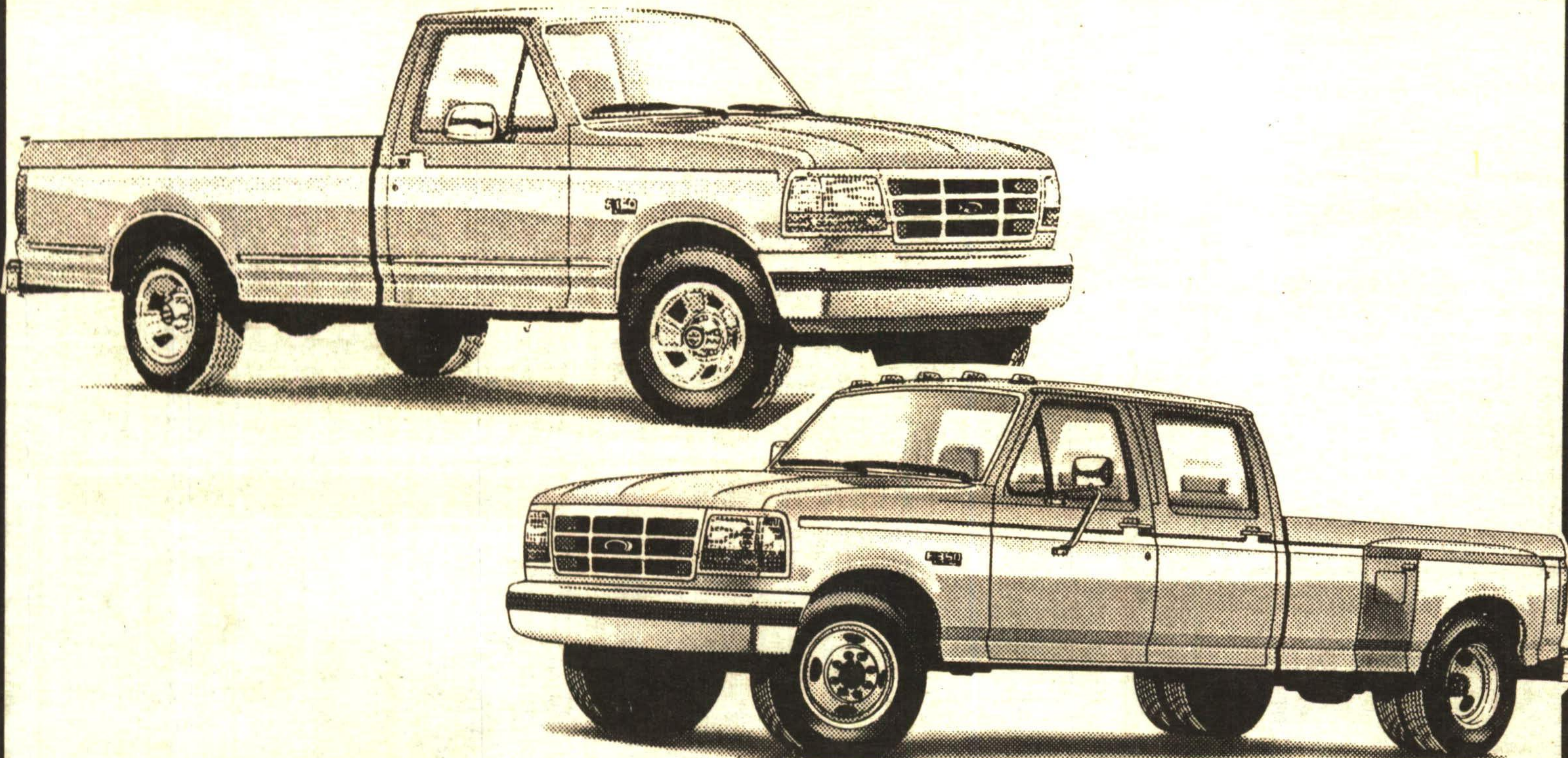


GO WITH THE WINNERS



\$1750 CASH BACK OR 3.9% FINANCING UP TO 48 MONTHS
ON CANADA'S BEST SELLING PICK-UP TRUCKS*

F150 4 x 4 FLARESIDE
XLT Loaded
 #8271

F150 XLT Loaded
 Deep Shadow Blue #8297

F150 XLT Loaded
 Tu-Tone Mocha #82163

F150 XLT Loaded
 Raven Black #82174

F150 XL Including Air
 Bright Red #82217

F150 XLT Including Air
 Raven Black #82239

F250 CUSTOM Diesel
 Oxford White/Dark Grey #82240

F150 XL Including Air
 Dark Mocha #82246

F150 XL Including Air
 Tu-Tone Blue #82248

F150 XL Including Air
 Tu-Tone Mocha #82249

F150 XL Including Air
 Bright Red & Black #82251

PLUS ALL SUPERCABS PRICED TO SELL
 5 To Choose From

*Offers mutually exclusive. Fin. max. \$16,000 for up to 48 mos. OAC. Eg. \$10,000 at 3.9% APR \$225.34 per mo. COB \$816.32. Rebates assigned to dealership. Limited time offer. Reg. cab/cab & chassis.

GREEN THUMB GARDENING



By **CHRISTINE COLE**
BRING OUTDOOR PLANTS INSIDE

Soon our thoughts will turn towards cleaning up the flower beds. But don't forget to salvage some of them to enjoy indoors for the winter.

The variegated and mottled foliage of coleus will add a splash of cheerful color to a room with medium to high light. If it becomes a little 'leggy', it is not receiving enough light. Move it to a brighter location and pinch out the growing tips to force it to branch out more.

German, Swedish and helix ivy, as well as asparagus fern which are used as greenery in mixed hanging baskets and planters, can be replanted and used as trailing houseplants.

The grass-like foliage of the Dracena or spike, which is often used as a centerpiece in planters, can be lifted and used as a floor plant. It will develop into a tall, single stemmed palm.

And, naturally, geraniums can be brought indoors for the winter.

Any plants that you intend to bring in for the winter should be dug before they are damaged by frost. Once they are lifted from the flower bed they should be planted in a pot large enough to accommodate the root system.

Before they are brought indoors each plant should be carefully inspected for pests. Aphids, spider mites, white flies and fungus gnats can rapidly spread to other houseplants. Carefully spray the plants a couple of times before you bring them into the house for winter.

Each week Christine Cole of Tuitman's Garden Centre and Landscaping, Highway 25, 1 mile south of Acton, 853-2480, will be presenting helpful tips and information to assist you in creating your garden show-place!

TUITMAN'S GARDEN CENTRE
 ACTON
 853-2480

CAPITAL

HWY. #7, GEORGETOWN



QUALITY IS JOB ONE!

Call Now

873-1626

Number 1 In Customer Satisfaction