

# Dart leagues set to start

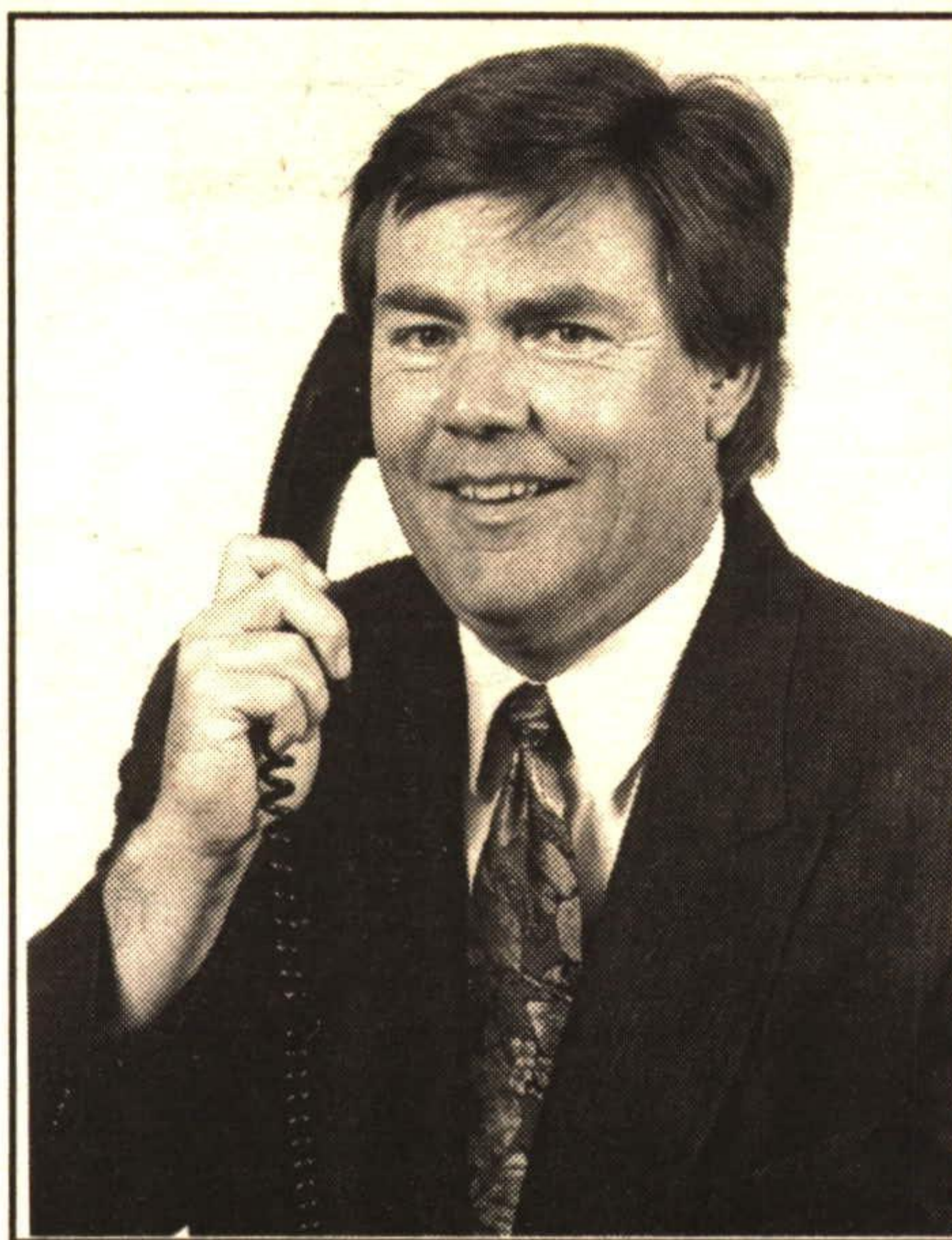
Wednesday, September 9 and Monday the 14th are likely to be the opening days of the winter season - already?

Yes, it is getting close to the time. Team registrations are over for the Halton (Monday night) League and there are 13 definite starters. George and Dragon and Legion lead with four teams each. There are two each from Time Out and Copper Kettle with O'Tooles having one. O'Tooles, last year's winners, are refurbishing and changing style of establishment, I understand. As usual there seems to have been a fair amount of team changes from 'bar' to 'bar'. Monday the 14th is opening night. The executive committee meet on August 25 and there is a captain's meeting on



September 8 at 8 p.m. at the George.

The Industrial League has a meeting with the Legion executive committee this week to determine a few questions on premises and play areas I understand. I trust an amicable solution will be achieved. The season is due to open on September 9. As with the other league there are a few player/team changes and no doubt they will all become apparent as the start beckons.



**Bill McKeown**  
Associate Broker

Call Bill today for a clear concise marketing plan by a proven professional. All property evaluations strictly confidential.

**Mc-Q-Win**

**877-5211**

360 Guelph Street,  
Georgetown, Ontario  
L7G 4B5

Toronto Line: 874-3051  
Erin Line: 833-7117  
Fax: (416) 877-5154



## RE/MAX SUBURBAN (91) INC.

\*NOW OFFERING 8.75% 5 YEAR MORTGAGE RATES  
LOWEST FIXED RATE IN 24 YEARS\* CALL FOR DETAILS

**BILL KNOWS REAL ESTATE ... BILL KNOWS REAL ESTATE ...**

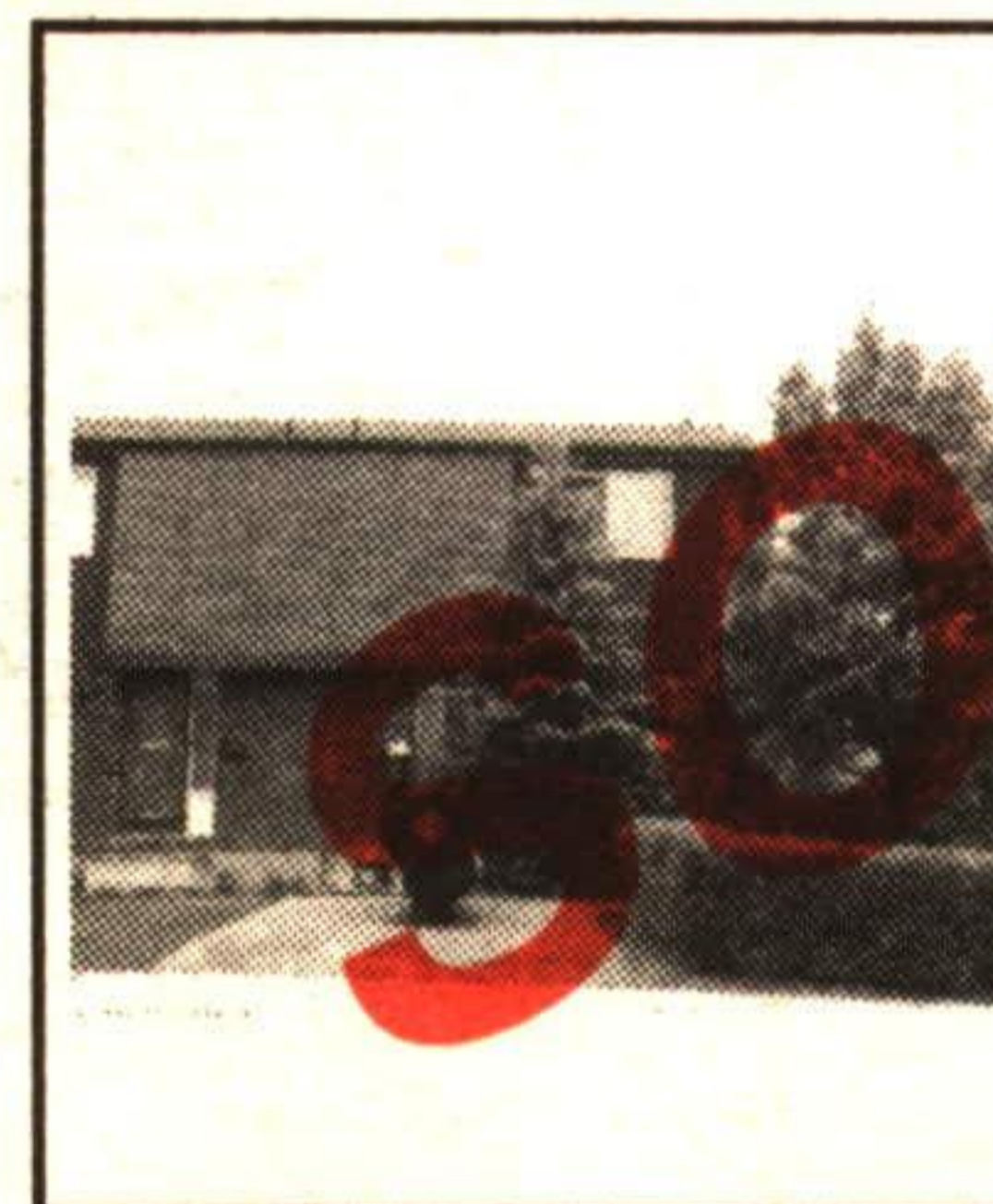
### FOR SALE OR RENT



2500 sq. ft. custom home, 4 bedrooms, 2 fireplaces, sauna, hot tub, pool and much much more - (may be rented as a separate unit). Plus 10,000 sq. feet of industrial space with 12.5 foot ceilings plus small office (1000 feet) for sale or rent. RM087-92

Call Bill McKeown at 877-5211

### TANTALIZING TOWNHOUSE



3 bedroom end unit "Eat-in" den, large principal rooms, finished basement, walkout to family sized backyard. What more could you ask. Call right away at only \$109,900. RM179-92

Call Bill McKeown at 877-5211

### PERFECT COUNTRY



Beautiful 1.2 acre property between Georgetown and Brampton, 4 large bedrooms, master ensuite, oak kitchen with breakfast nook overlooking family room with fireplace, den or office (would be perfect for home business) and much much more. Call for your personal showing today. Offered at \$299,900. RM193-92

Call Bill McKeown at 877-5211

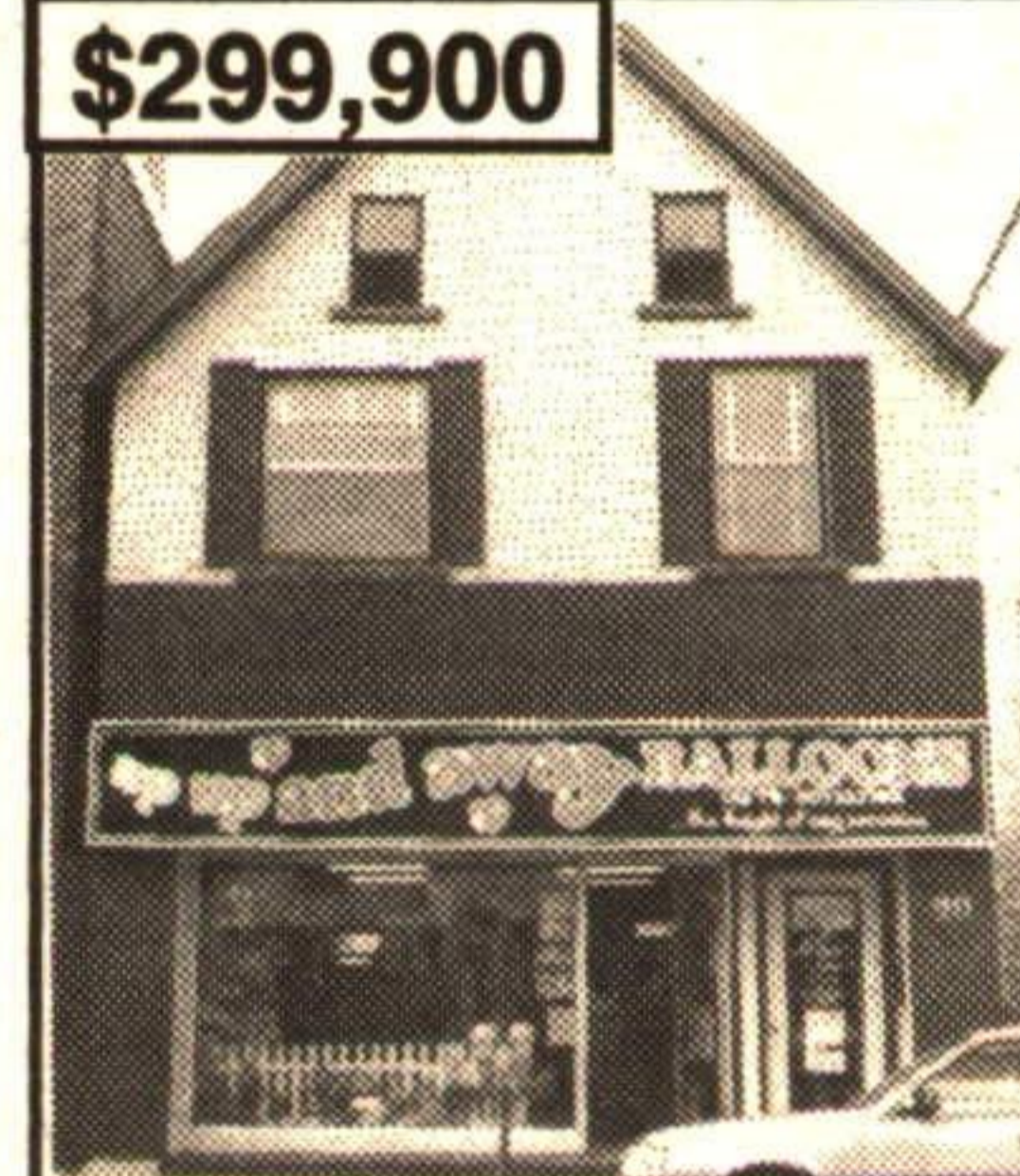
### QUIET CRESCENT



This large 4 bedroom has lots of room for growing families. Eat-in kitchen, separate dining room, main floor family room, garage, inground pool on a 70 foot lot and much, much more for only \$214,900. RM207-92

Call Bill McKeown at 877-5211

### DOWNTOWN



Income property in OLD Georgetown, rented & in great repair. Includes luxury residence, store & an office rental space. A must to see for prudent investors at only \$299,900. RM218-91

Call Bill McKeown at 877-5211

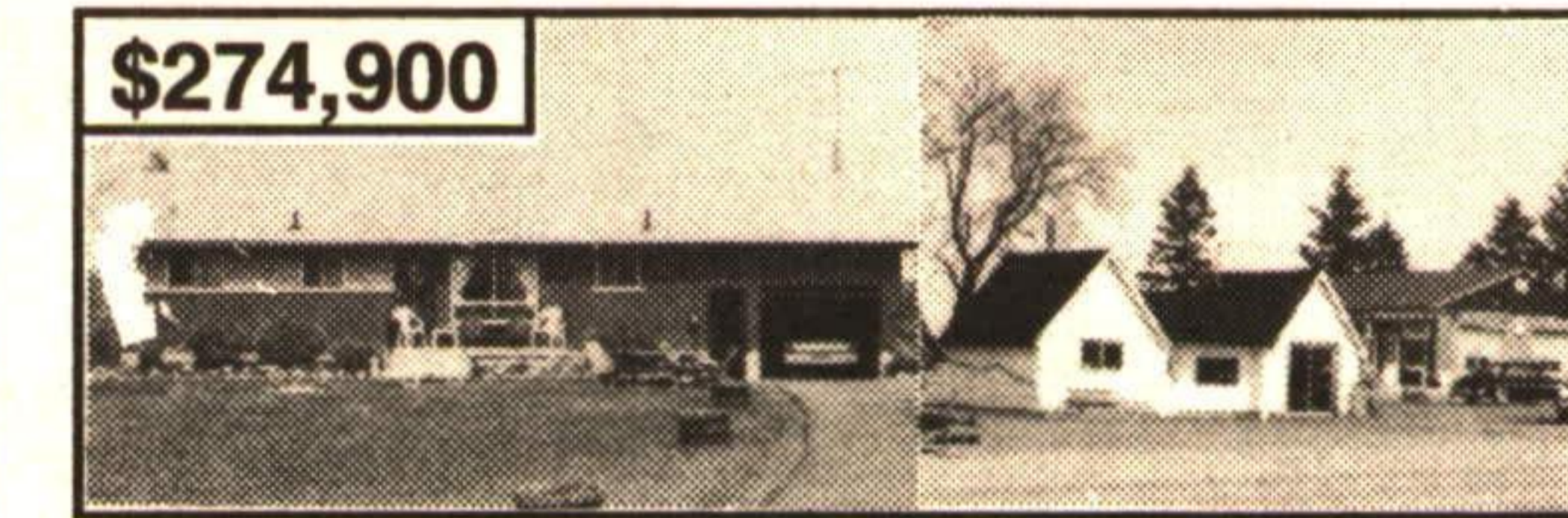
### HIGHWAY 7 COMMERCIAL



One plus acres on a busy corner on #7 just west of Georgetown with an operating fruit and vegetable business. This ideal location makes this land a good investment. Call today at \$595,900. RM089-92

Call Bill McKeown at 877-5211

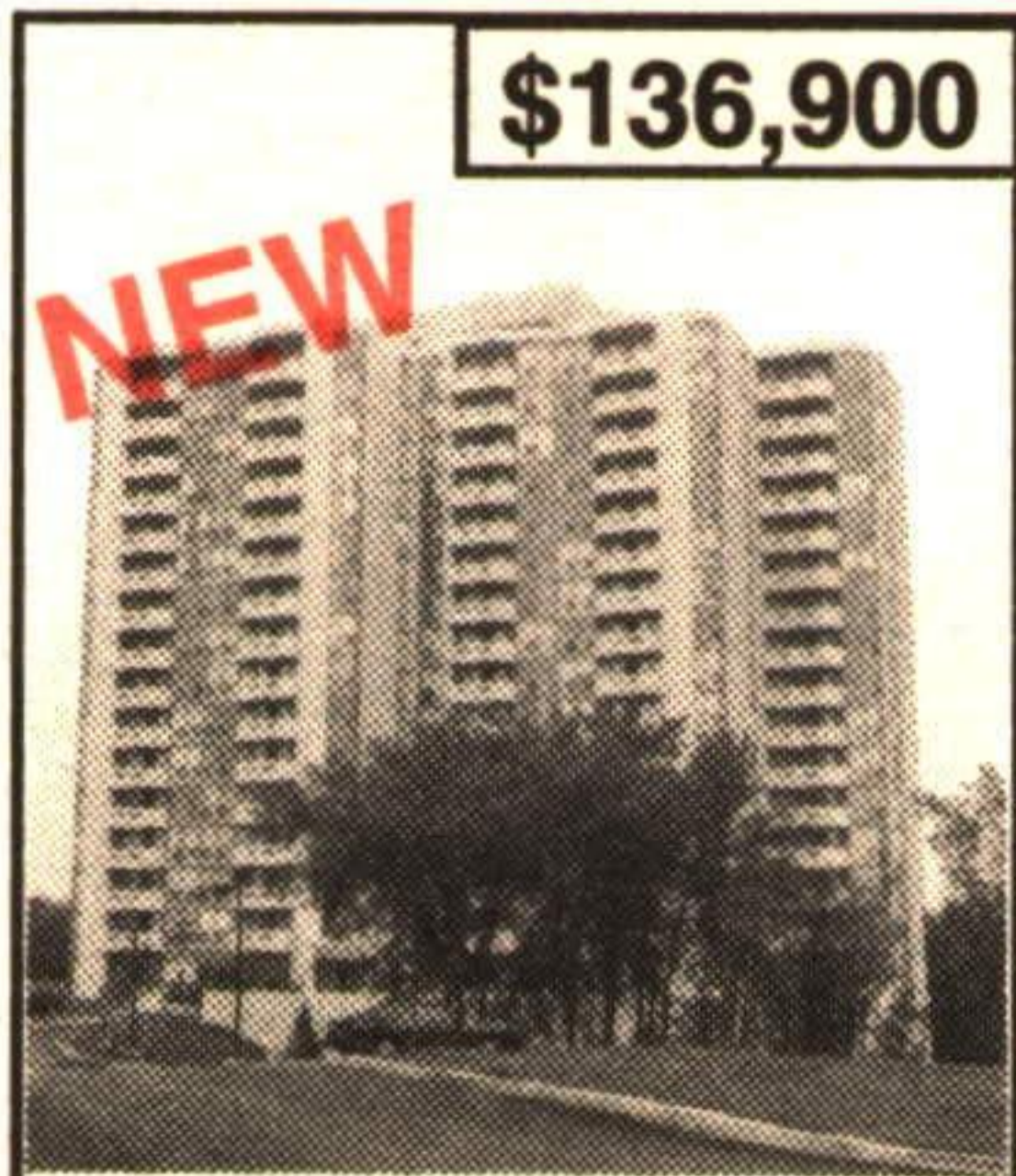
### FOR SALE OR TRADE



Busy Hwy. 6 location, north of Arthur. Ideal for car dealer, body shop, variety store. Currently operating as a used car lot. Nice 3 bedroom bungalow with good appointments. Vendor willing to consider trade for home in this area with 2 car garage. Offered at \$274,900. RM108-92

Call Bill McKeown at 877-5211

### THE SANDS - \$136,900



Two bedroom Sinclair model over 1200 sq. feet of luxury living with Euro style kitchen, 5 appliances included, dining and living room, master ensuite. Call right away for your viewing. RM197-92

Call Bill McKeown at 877-5211

### VACANT LAND R-4

Small site in Georgetown for multi-residential, R4 zoning and 10600 sq. ft. Ideal for townhouse project. Priced to sell at \$129,900. RM228-92

Call Bill McKeown at 877-5211

**BILL KNOWS REAL ESTATE ... BILL KNOWS REAL ESTATE ...**

\*TO QUALIFIED RESIDENTIAL BUYERS / BASED ON 25 YEAR AMORTIZATION\*

Not intended to solicit property already listed for sale

## SCHOOL BUS SCHEDULES 1992-1993

A number of adjustments have been made to the school bus schedules for 1992-93. Information regarding the 1992-93 schedules can be obtained by visiting your school to view the 1992-93 schedules/maps or by contacting the Principal of your school.

For further information, please contact the Transportation Department at:

332-2200 - Burlington, Oakville  
332-2202 - Oakville, Milton  
878-8451 - Milton, Halton Hills

Dave Coons  
Chair

Bob Williams  
Director

## LE CONSEIL DES ÉCOLES CATHOLIQUES DE HALTON INSCRIPTION SCOLAIRE

pour la rentrée en septembre 1992

L'inscription scolaire pour tout enfant admissible mais pas encore inscrit aux niveaux de la maternelle à la 8e année aura lieu à l'École Sacré-Coeur (Georgetown), à l'École Sainte-Marie (Oakville) et à l'École Saint-Philippe (Burlington).

le lundi 31 août 1992  
entre 9 h et 15 h

Pour être admissible à la maternelle, l'enfant doit avoir quatre (4) ans avant le 31 décembre, 1992. Une preuve de l'âge de l'enfant est nécessaire, ainsi que les immunisations requises.

La rentrée des classes pour tous les élèves aura lieu

le mardi 8 septembre, 1992

Les routes d'autobus sont affichées à l'entrée principale de chaque école.

Gilbert McCraw  
Président de la section de langue française

C.G. Byrnes  
Directeur de l'éducation

## THE HALTON ROMAN CATHOLIC SCHOOL BOARD ADVANCED REGISTRATION

1992-93 SCHOOL YEAR

FOR NEW STUDENTS - NOT PREVIOUSLY REGISTERED

### ELEMENTARY SCHOOLS:

JK to GRADE 8: Monday, August 31, 1992, 9:00 a.m.-3:00 p.m. Junior Kindergarten registrants are required to be four (4) years of age by December 31, 1992. Proof of age required and necessary immunizations must be completed.

FOR INFORMATION: Call your local Catholic elementary school.

### SECONDARY SCHOOLS:

Monday, August 31st to Friday, September 4, 1992 - 9:00 a.m.-3:00 p.m.

### FOR INFORMATION CALL

Bishop P.F. Reding Secondary School - 875-0124/5/6  
1600 Main Street East, Milton

CLASSES BEGIN TUESDAY, SEPTEMBER 8, 1992

BUS ROUTES POSTED AT THE MAIN ENTRANCE OF EACH SCHOOL

I. McCauley  
Chair

C.G. Byrnes  
Director of Education

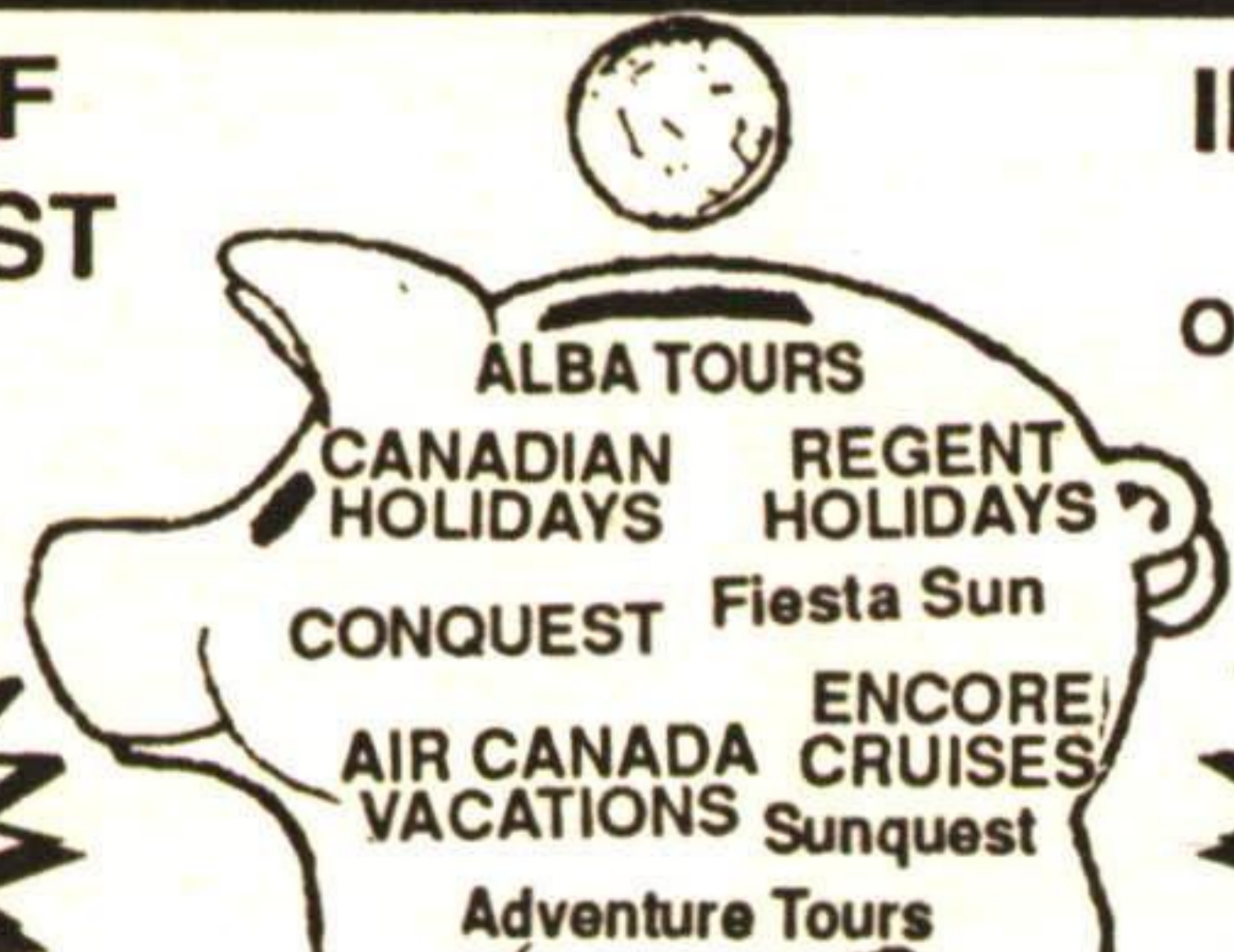
## Prominent Travel (Brampton) Ltd.

WINTER BROCHURES ARE HERE

**10-40% DISCOUNT**

SELL-OFF  
SPECIALIST

INTEGRITY &  
SERVICE  
ONT. REG. #2788279



CRUISES  
& CHARTER  
FLIGHTS

VACATION  
PACKAGES

ROYAL CREST MALL

50 Kennedy Road South, Brampton

TEL: (416) 450-7400

Fax: (416) 450-8022