



Have A Dream

NEED RESULTS

877-5211



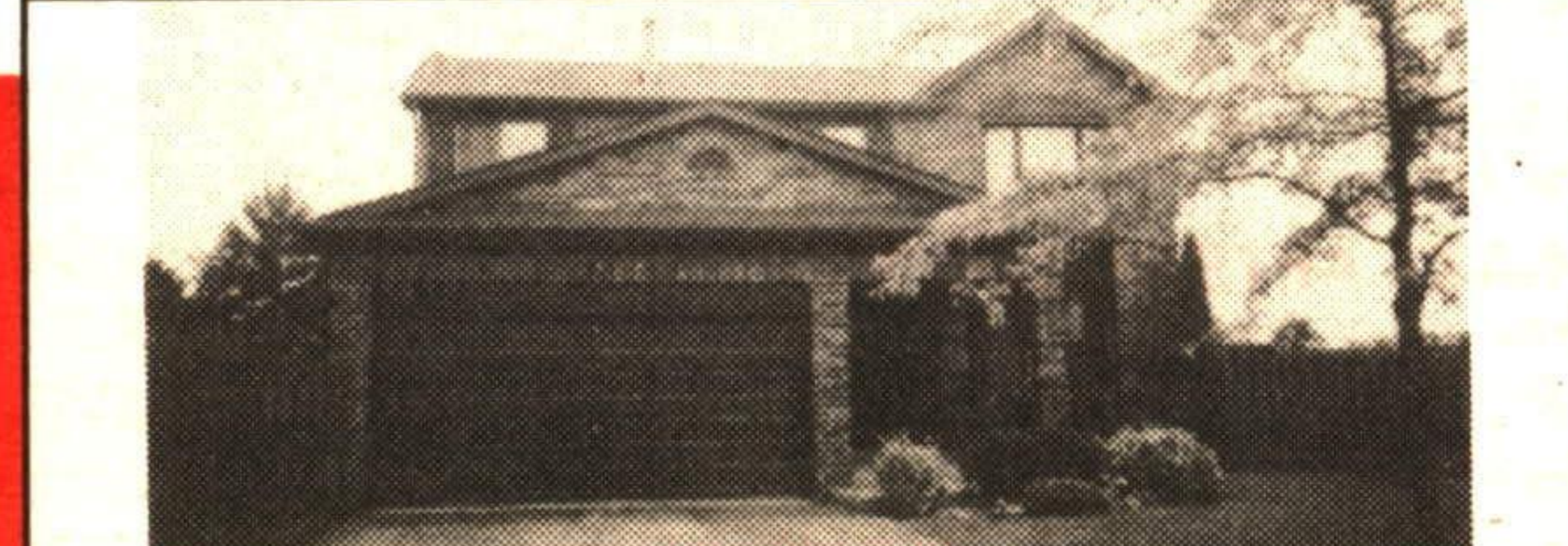
CHANCE OF A LIFETIME \$156,900

For first time buyers, magnificent 3 bedroom bungalow with park like backyard. Finished rec room and hardwood floors throughout. Call Donna Rae*. RM190-92



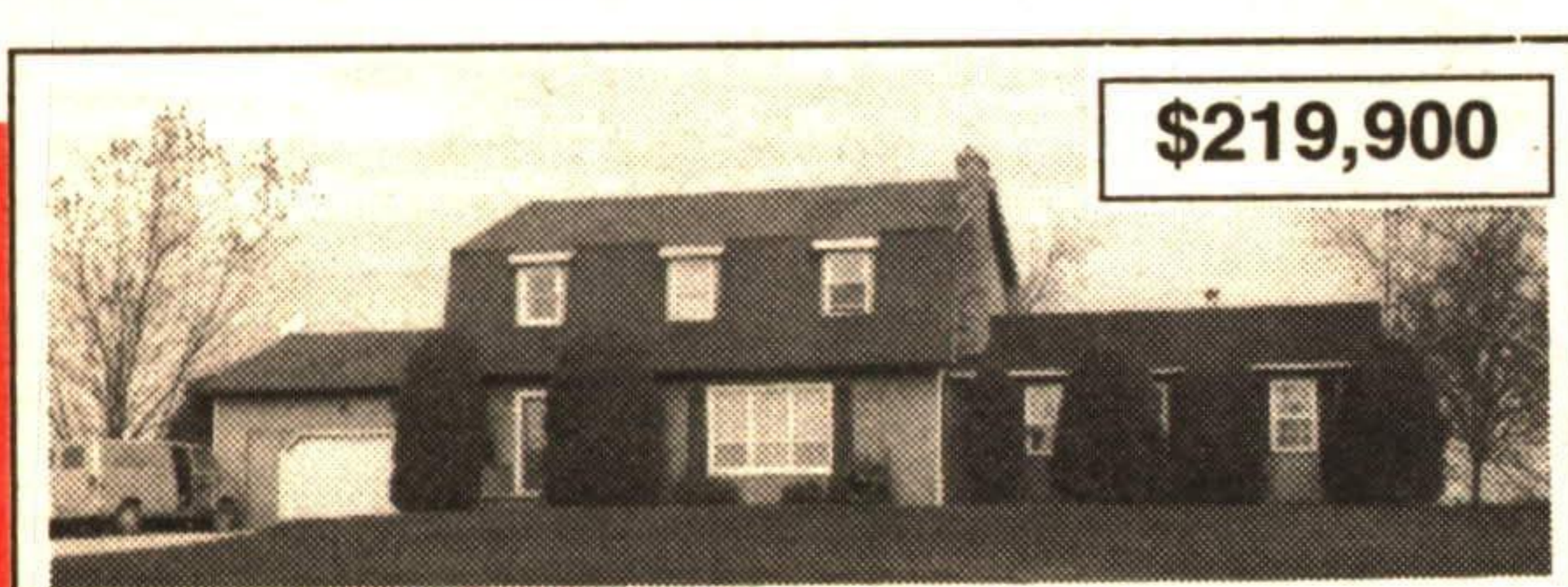
GORGEOUS COUNTRY PROPERTY north of Georgetown \$219,900.

BONUS 5% Mortgage for 2 years
Call Donna Rae* 877-5211 RM094-92



WOW!!!

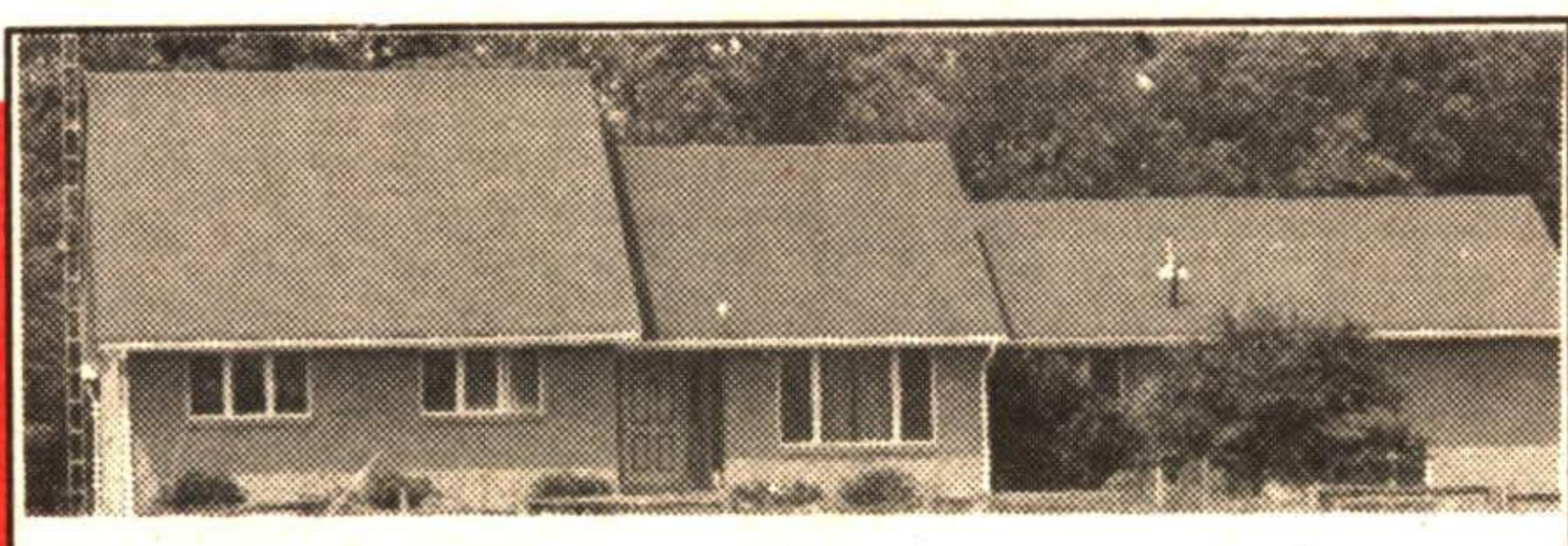
\$279,000 Huge family home boasting executive taste throughout; sparkling inground pool with plenty of backyard left over. Quiet dead end street. Call Donna Rae* 877-5211. RM184-92



\$219,900

THE THREE "C"'S

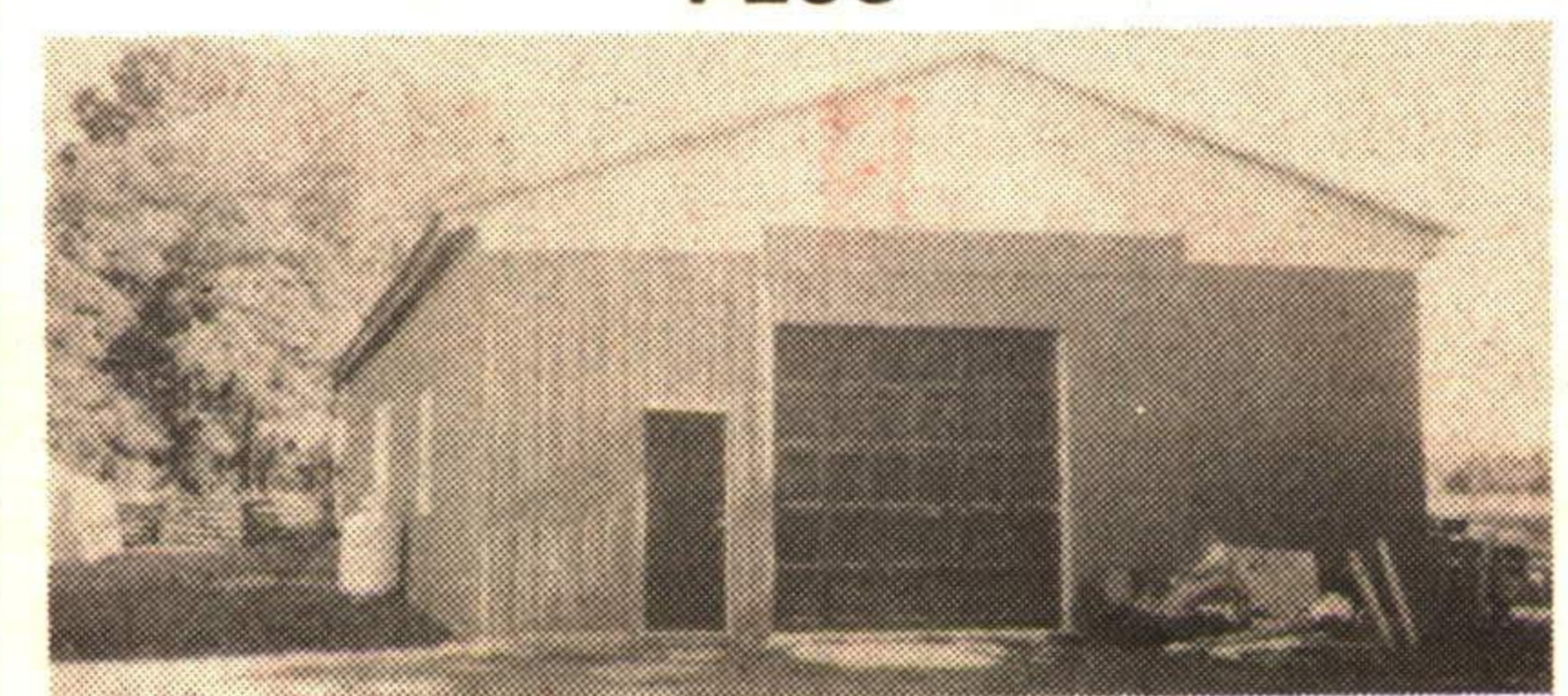
Charming, character, country. 1 acre close to Ballinacra. Possible 5 bedrooms, \$219,900. Motivated vendor. Call Now Donna Rae* 877-5211. RM254-91



28 ACRES

Heated workshop, 300 sq. metres. Walkout from basement with 2nd kitchen and washroom (possible in-law), gorgeous property. Great location for horses.

PLUS



300 sq. meter workshop. Carpenters and car buffs welcomed. Call Donna Rae* 877-5211 or Res. 873-1058. RM194-92



LIMEHOUSE HISTORY

2 homes for the price of one. Live in the one house and rent out the other side. Great help with the mortgage. Over an acre. The kilns on the property are part of the history of this property. Call Donna Rae*. RM139-92



\$179,900

Large home. Four seasons addition, so bring all wicker furniture. Gorgeous private backyard. Walk to all amenities. Call Donna Rae*, 877-5211, Res. 873-1058. RM107-92



\$249,900.

Will buy you this gorgeous home with a unique design. 16' ceiling, skylight and 16' stone wall boasting an almond painted woodstove. 4 bedrooms (large). 10' x 10' playhouse. Center fireplace dividing the living rm and dining rm. Donna Rae* 877-5211. RM183-92

I HAVE A CASH BUYER

For a 2nd or 3rd floor 2 bedroom condo in the Sands. Call Donna Rae* if you are thinking of moving.



IN-LAW SUITE

Gorgeous bungalow with walkout basement converted to in-law suite for family (teenagers). Soft decor and some hardwood floors. Backs onto park. Call NOW. Donna Rae*. RM116-92

I HAVE A CASH BUYER

For a nice clean semi in town. Call Donna Rae* if you are thinking of moving.

THE BETTER WAY...

873-1058 RES.
24 Hour Service



DONNA RAE*

RE/MAX SUBURBAN (91)

*Sales Rep.



100% BLACK