

SAVE UP TO 50%*

JUST SELECT THE VEHICLE OF YOUR CHOICE AND WE'LL DEDUCT UP TO 50% OFF THE STICKER AND YOU PAY ON THE DIFFERENCE.

ON ANY NEW CAR OR TRUCK

1992 ESCORT

LX 2 & 4 DOORS

\$8379*



Air cond., power steering/brakes, Conve., Grp., AM/FM Cass., more

MSRP \$14,202. STK. #2225

6 AVAILABLE

1992

MUSTANG LX

\$8749*



Air Cond., Power Steering/Brakes, rear windows, alum. wheels, floor mats, tinted glass, more.

MSRP \$15,349. STK. #3201

9 AVAILABLE

1992

TEMPO GL

\$8622*



Auto, Air Cond., Tu-tone Paint, Power Steering/Brakes, AM/FM, Tinted Glass, more.

MSRP \$14,370. STK. #4282

42 AVAILABLE

1992

THUNDERBIRD

\$12,033



Air Cond., Pwr. Seats, AM/FM/Cass., Pwr Locks, Cruise Control, Tilt Steering, Alum. Wheels, Floor Mats, more

MSRP \$21,487. STK. #6202

6 AVAILABLE

1992 RANGER

S/CAB XLT

\$10,687*



4L Engine, Auto, Air Cond., cruise, tilt, alum. wheels, handling pkg., sliding windows, more

MSRP \$19,791. STK. #82136

9 AVAILABLE

1992

AEROSTAR

\$11,215*



Auto, 7 passenger, Cpt.s Chair, air cond., AM/FM/Cass., Console, luggage rack, cruise, tilt, more

MSRP \$22,429. STK. #8229

14 AVAILABLE

1992

EXPLORER

\$10,640*



4 X 4, Air Cond., Auto, AM/FM/Cass., Luggage Rack, Privacy Glass, Defroster, Captains Chairs, more

MSRP \$25,952. STK. #8217

6 AVAILABLE

1992

F-SERIES

\$12,238*



XLT, Air Cond., Pwr. Wind/Locks, Auto, 5L Engine, Cruise, Tilt, Sliding Window, Camper Pkg., 2 Tone Paint, more

MSRP \$23,090. STK. #8297

12 AVAILABLE

***50% OFF PLAN IS A LEASE PROGRAM.**

O.A.C. 24 mos., 50,000 km limit. 6¢/km over allowance. Plus taxes, license. Upon delivery Lessee pays First mo. in advance and a refundable security deposit.

CAPITAL



QUALITY IS

JOB ONE!

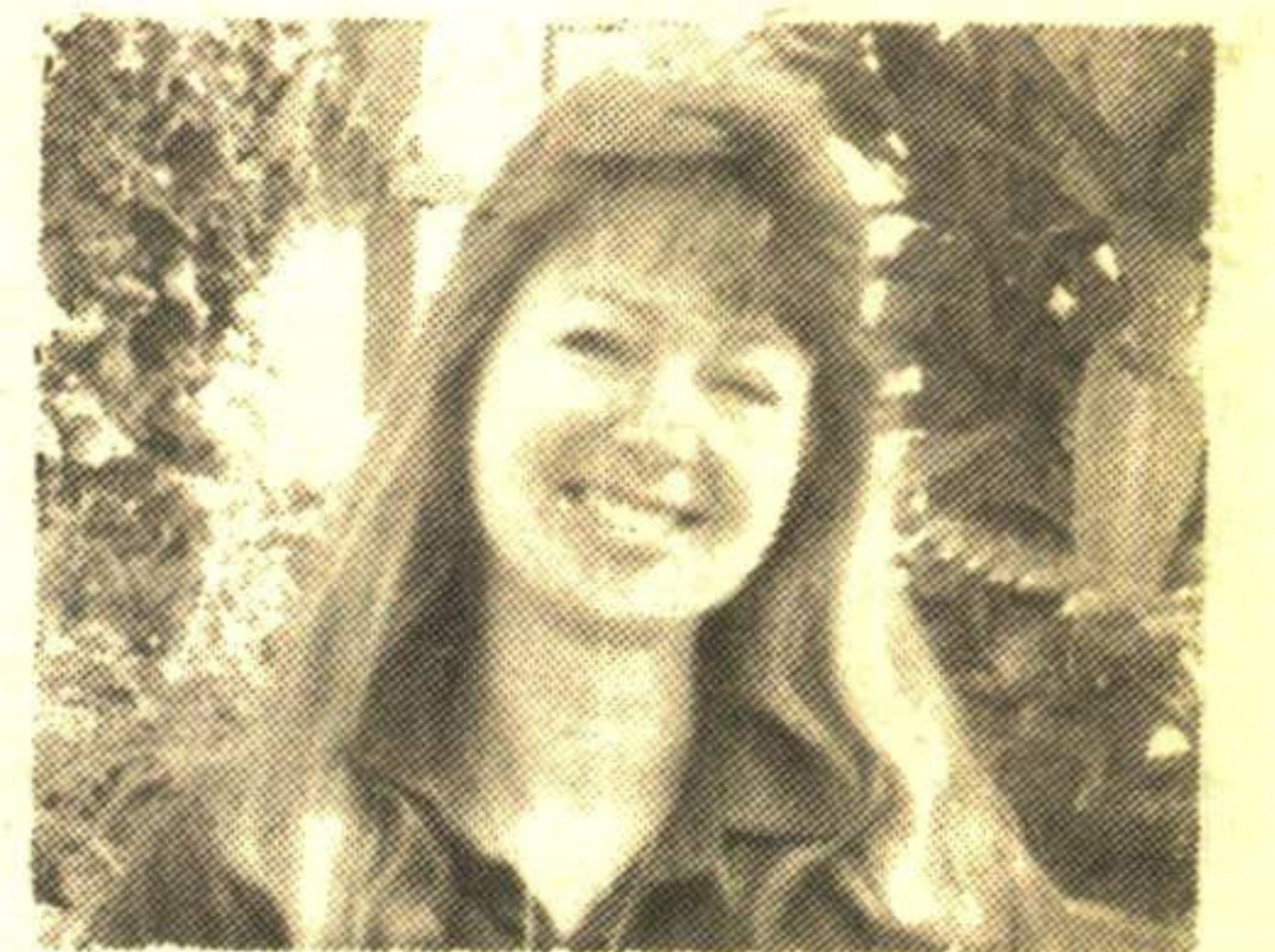
HWY. #7, GEORGETOWN

Call Now

873-1626

Number 1 In Customer Satisfaction

GREEN THUMB GARDENING



By CHRISTINE COLE

Blooming Beauties

HOW TO KEEP YOUR ANNUALS HEALTHY AND BLOOMING ALL SUMMER LONG

1. Always choose plants to suit the sunlight condition. Sun-loving annuals do not perform well in shaded conditions, & visa versa for shade-loving plants.
2. Prepare & amend the soil before planting where needed. Heavy clay soils & light sandy soils can be improved with the addition of organic matter such as peat moss, manure &, or, clay breaker.
3. Keep the plant watered regularly. The flowers will quickly fade without enough water, & conversely, too much water can do as much harm - especially on sensitive plants like impatiens, begonia & fuscias that quickly deteriorate with excessive water. A thick layer of mulch (cocoa beans, bark, marble chips & lava rocks) will help to conserve soil moisture, keep the soil temperature cooler & an added benefit - it will suppress weeds (which compete with the annuals for soil moisture & nutrients).
4. Fertilize on a regular basis. This can be done with water soluble fertilizer that you water in or slow release granules that you work into the soil or slow release pebbles that you sprinkle on the soil (for pots & planters).
5. Remove faded flowers from plants before they go to seed. This is especially important on petunias, geraniums, pansies & marigolds. Just removing the petals is not sufficient. You must remove the swollen area below the bloom (which will form the seeds).

Each week Christine Cole of Tuitman's Garden Centre and Landscaping, Highway 25, 1 mile south of Acton, 853-2480, will be presenting helpful tips and information to assist you in creating your garden show-place!

TUITMAN'S GARDEN CENTRE
ACTON
853-2480