

LOOK!

CERTIFIED AND READY TO GO!!



1990 TEMPO - 4 DR \$6995

Air/Auto #91126



1989 TEMPO - 4 DR \$5995

Auto/Air/Stereo #91151



1990 GMC 3/4 \$11995

V8/Auto 21 km #9231



1989 PONTIAC 6000 LE \$6995

4DR/Air/Loaded #9185



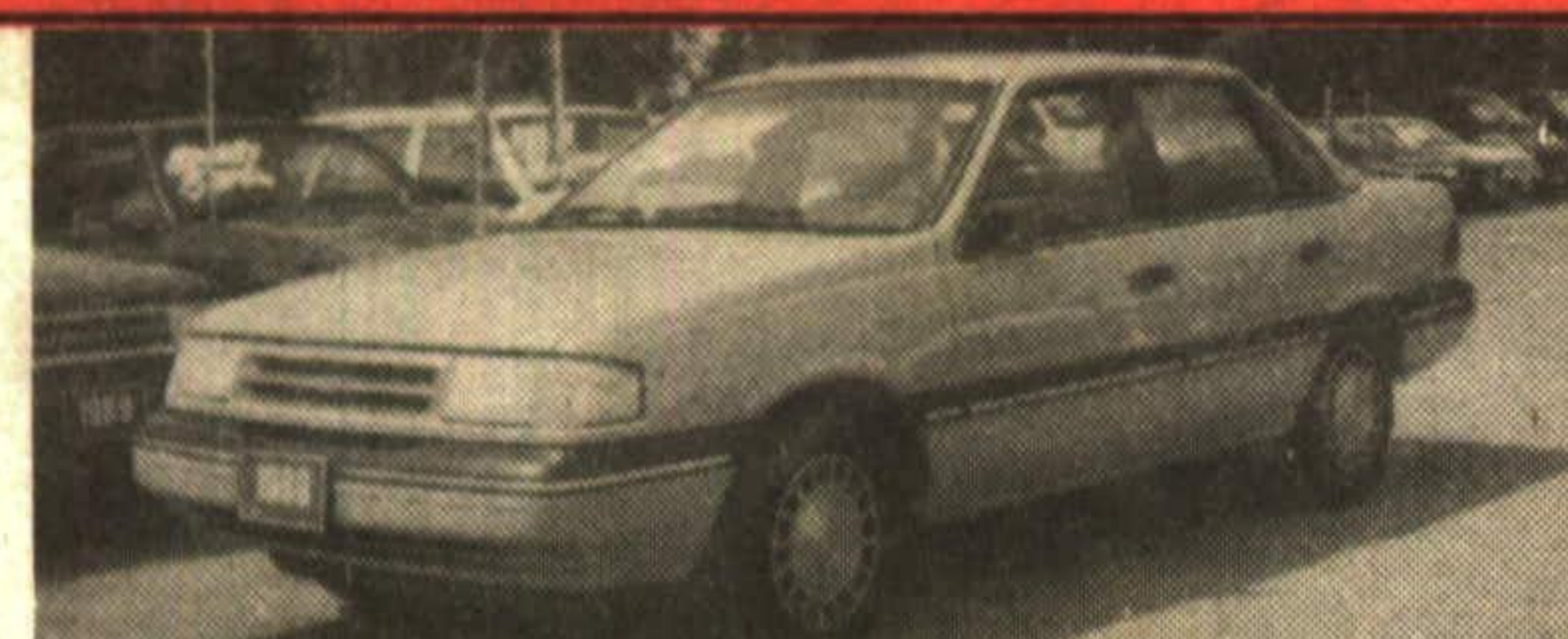
1989 CALAIS - 4 DR \$9495

Air/Loaded 53 km #9157A



1989 CAVALIER WGN. \$6995

Wgn/Air/Auto/Cass #9232



1989 TEMPO - GL \$5995

Auto/Air/Pwr #91137



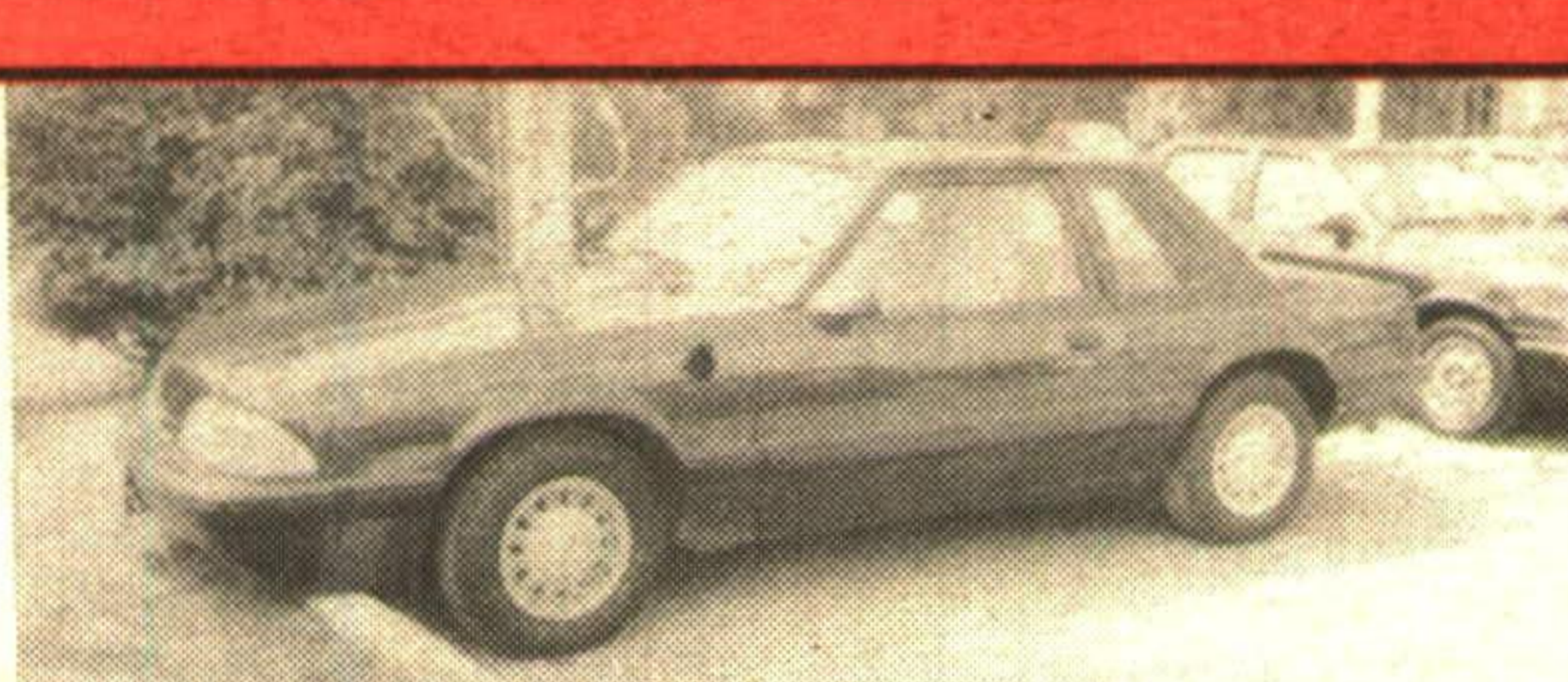
1989 MUSTANG - 3 DR \$5995

Air/PW/PL/Cass #4133A



1989 ESCORT \$4995

4 Dr/Auto #9218



1988 MUSTANG - 2 DR \$4995

Cruise/Cass/PL #91154

GREEN THUMB GARDENING



By CHRISTINE COLE

Keep your cool this summer with vines

The proper placement of a thick, dense vine on your house can provide you with a cooling effect all summer long. Deciduous vines on the west wall of the house will create a shaded area on the wall during the summer while in the winter (when they're leafless) the sun can shine on the wall to help warm the house. Evergreen vines planted on any wall will insulate it in the winter and shade it during the summer.

The most appropriate vines for this use are those that are self supporting. They attach themselves to the house wall (brick, stone, wood) with rootlets that grow out of the stem or branch. The following are excellent choices to cool any wall.

Boston Ivy: Self clinging, even to the smoothest surface. Has deep green lustrous foliage that turns a spectacular scarlet in fall.

Virginia Creeper: A native, hardy vine that grows rapidly and also turns red in the fall.

Trumpet Vine: Produces large, showy orange-red trumpet shaped flowers in mid-summer.

Climbing Hydrangea: Large white flowers produced in late June. Flowers are a half ball - similar to the Annabelle Hydrangea flower. Leaves are rounded in shape and quite glossy.

Euonymus or Wintercreepers: This is the only evergreen vine available. And it produced attractive orange fruit in the fall.

Each week Christine Cole of Tuitman's Garden Centre and Landscaping, Highway 25, 1 mile south of Acton, 853-2480, will be presenting helpful tips and information to assist you in creating your garden show-place!

TUITMAN'S GARDEN CENTRE
ACTON
853-2480

CAPITAL



QUALITY IS JOB ONE!

- 2 GREAT LOCATIONS -

ACTON
MAIN ST. N.
(HWY. #25)
853-2370

and

GEORGETOWN
HWY. #7
AT DELREX BLVD.
873-1626

Number
1
In Customer Satisfaction