

CAPITAL FORD GIVES YOU THE LOWEST RATES AVAILABLE ON TEMPO AND AEROSTAR

3.9%
Financing up to 48 months

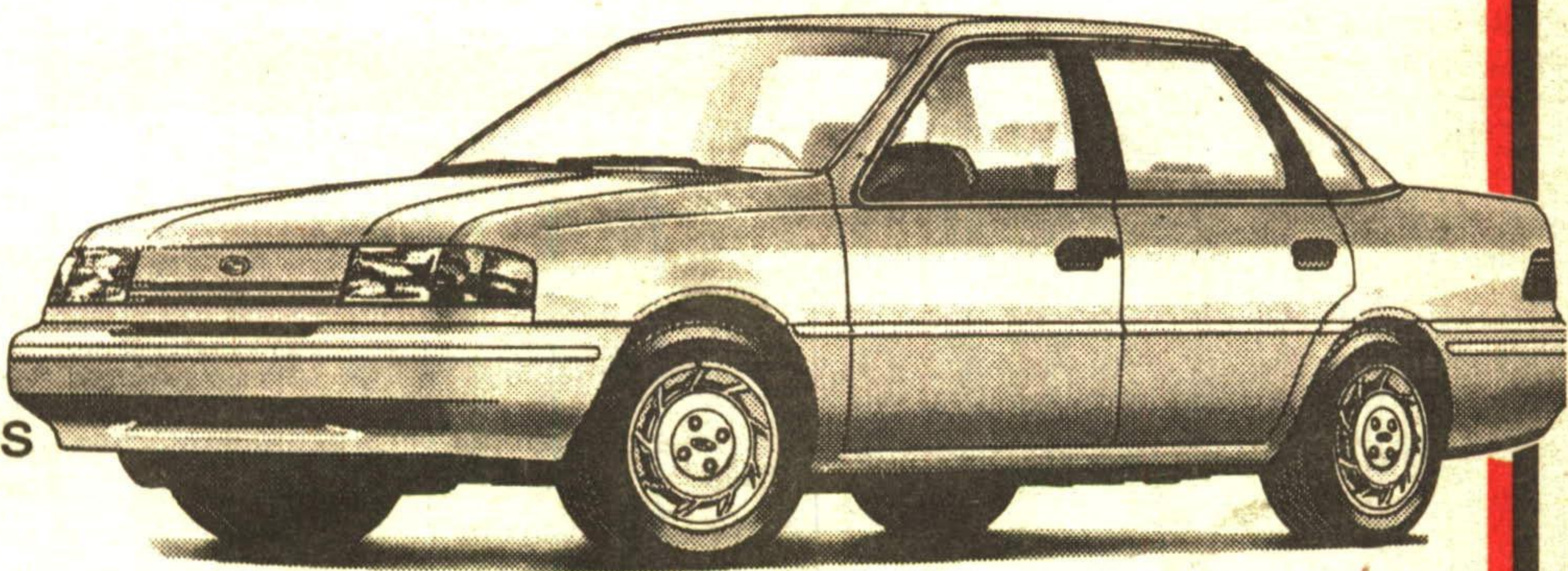
EXCLUSIVE TO CAPITAL FORD

TEMPO

42 AVAILABLE

- GL-4 Door Sedan
- Automatic Transmission
- Air Conditioning/Tinted Glass
- Electric Defroster
- Dual Power Mirrors
- AM/FM Stereo
- Sport Instrumentation
- Interval Wipers
- Power Steering/Brakes
- Plus all Standard Factory Equipment

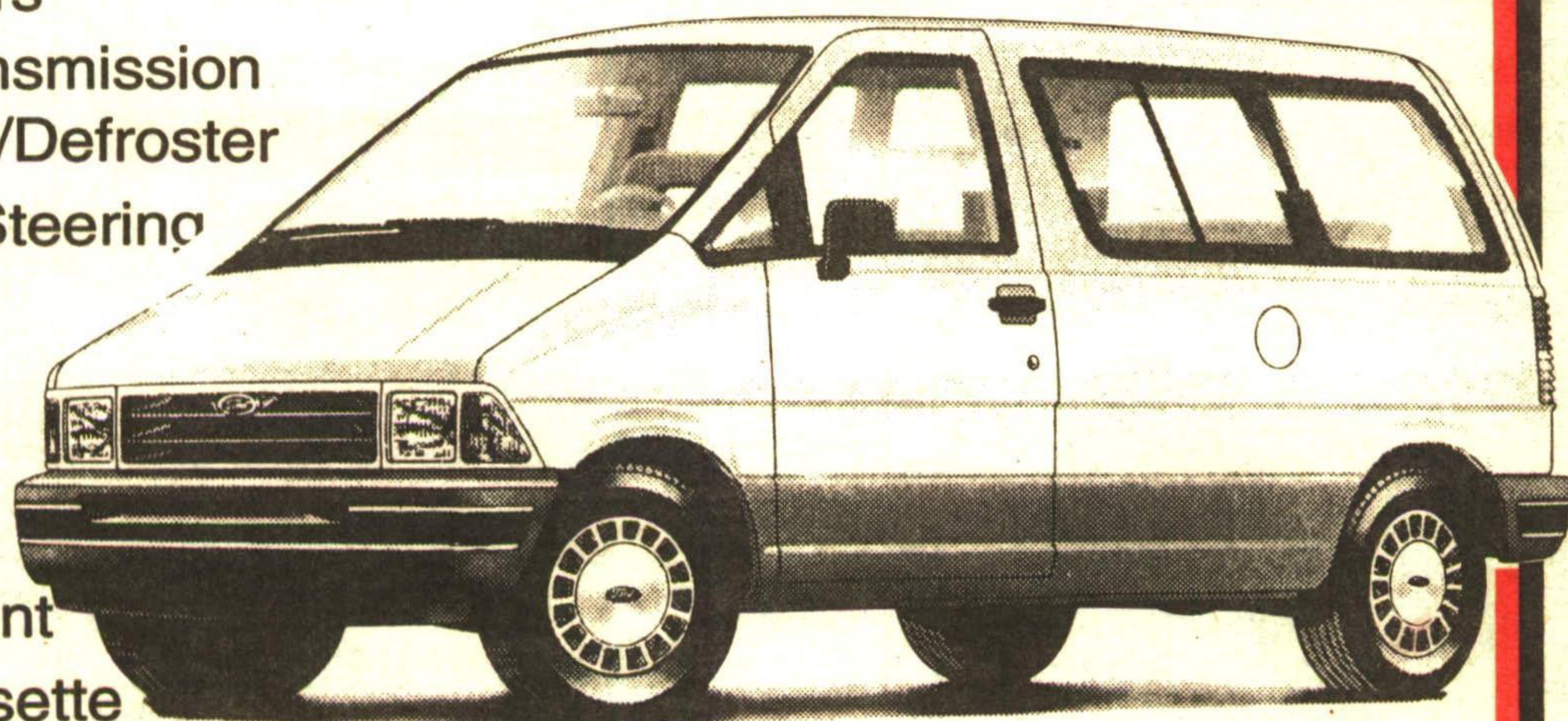
CASH PRICE \$9,999*



AEROSTAR

13 AVAILABLE

- 7 Passenger XL Trim
- Dual Captains Chairs
- Auto Overdrive Transmission
- Rear Wiper/Washer/Defroster
- Speed Control/Tilt Steering
- Privacy Glass
- Air Conditioning
- Floor Console
- Luggage Rack
- Deluxe Tu-Tone Paint
- AM/FM Stereo Cassette
- Plus All Standard Factory Equipment



*Rebates assigned to dealer. Tempo frt. (475), taxes & lic. extra. *Financing for a maximum of \$15,500 on Tempo and \$18,000 on Aerostar for up to 48 mos. O.A.C. Eg. \$10,000 @ at 3.9% APR - \$225.34 per mo. COB. \$816.32. Limited time offer. Offers mutually exclusive. Financing cannot be combined with cash price.

GREEN THUMB GARDENING



By **CHRISTINE COLE**

RHODODENDRON'S

Rhododendron's are beautiful broad-leaved evergreens that are attractive garden plants during every season of the year. When in bloom, few other shrubs can rival their showy flowers. Their clusters of trumpet-shaped flowers range in colors from light pink, mauve to bright red. Sometimes the flowers are so numerous that the foliage is partially hidden. There is now several varieties - that have a small stature at maturity (3-5 feet), and that are hardy to 30°C. Such as; P.J.M., Nova Zembla, Roseum Catawbnense, and more.

The successful culture of rhododendron's is a worthwhile endeavour. The planting site and soil are the first steps toward a healthy, flowering shrub. The best site is one that is protected from the winter westerly winds and sun. Rhododendron's planted in an exposed location may be affected by windburn, dessication and scorched leaves. Rhododendron's also require an acid, well-drained soil that is high in organic matter. Unfortunately, this soil texture is rare on this area, therefore the soil will have to be amended to produce such a medium. In alkaline soils it is advisable to excavate the planting area to a depth of two feet, place a five inch layer of gravel in the bottom of the bed and fill in the rest with a light topsoil and peat moss mixture or straight peat moss. The peat moss provides the acidity required to grow healthy rhododendron's. Over time the soil may lose its acidity, mulching with shredded oak leaves or the addition of aluminium sulphate to the soil will lower the PH (more acid) to a desirable level.

Once rhododendron's are established they require little maintenance. And if the location is properly chosen little or no winter protection is necessary. However, the branches of your Christmas tree placed over the shrub in tee-pee fashion will prevent wind burn and dessication and the dropped needles will be a beneficial mulch. Rhododendron's flower on the seasons wood and should only be pruned after it has flowered.

Each week Christine Cole of Tuitman's Garden Centre and Landscaping, Highway 25, 1 mile south of Acton, 853-2480, will be presenting helpful tips and information to assist you in creating your garden show-place!

CAPITAL

QUALITY IS JOB ONE!

- 2 GREAT LOCATIONS -

ACTON
MAIN ST. N.
(HWY. #25)
853-2370

and

GEORGETOWN
HWY. #7
AT DELREX BLVD.
873-1626

Number 1
In Customer Satisfaction

TUITMAN'S GARDEN CENTRE
ACTON
853-2480