

**CAPITAL FORD
GIVES YOU THE
LOWEST RATES
AVAILABLE ON
TEMPO**

3.9%

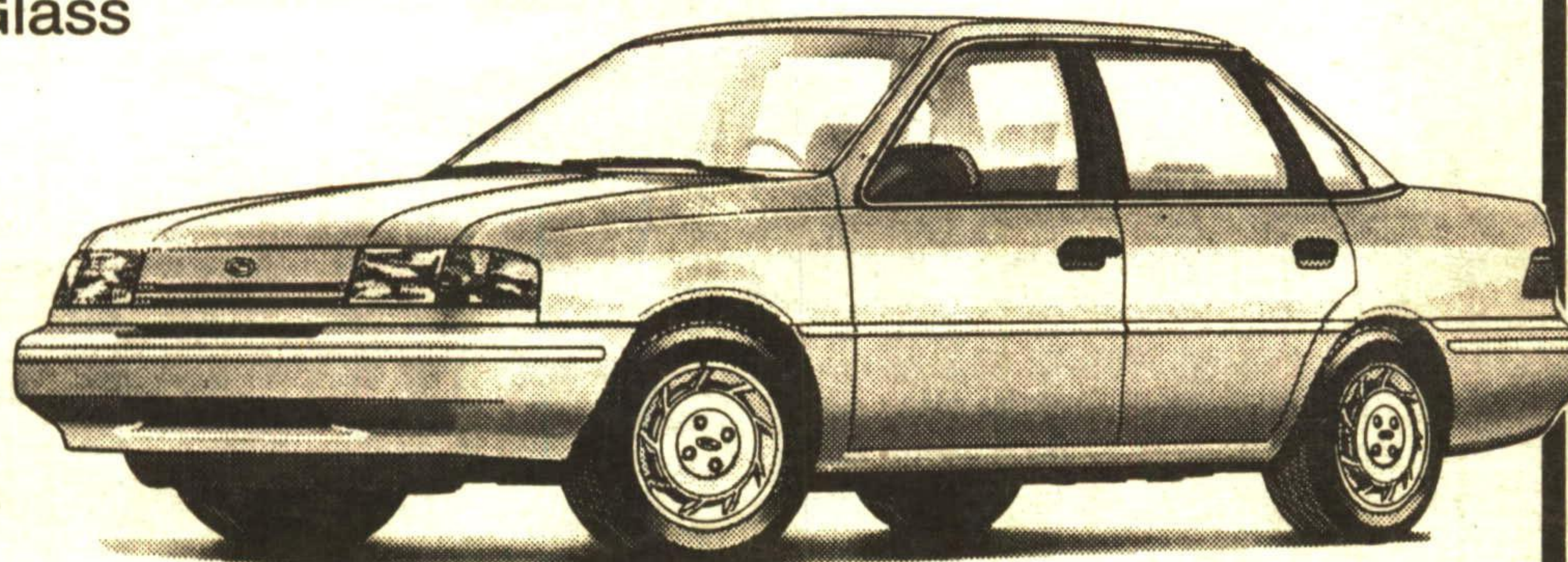
**FINANCING UP
TO 48 MONTHS**

EXCLUSIVE TO CAPITAL FORD

TEMPO

**50
AVAILABLE**

- GL 4 Door Sedan
- Automatic Transmission
- Air Conditioning/Tinted Glass
- Electric Defroster
- Dual Power Mirrors
- AM/FM Stereo
- Sport Instrumentation
- Interval Wipers
- Power Steering/Brakes
- Plus all Standard
Factory Equipment



*Rebates assigned to dealer. Financing for a maximum of \$15,000 for up to 48 months. Limited time offer.

CAPITAL



QUALITY IS JOB ONE!

- 2 GREAT LOCATIONS -

ACTON
MAIN ST. N.
(HWY. #25)
853-2370

and

GEORGETOWN
HWY. #7
AT DELREX BLVD.
873-1626

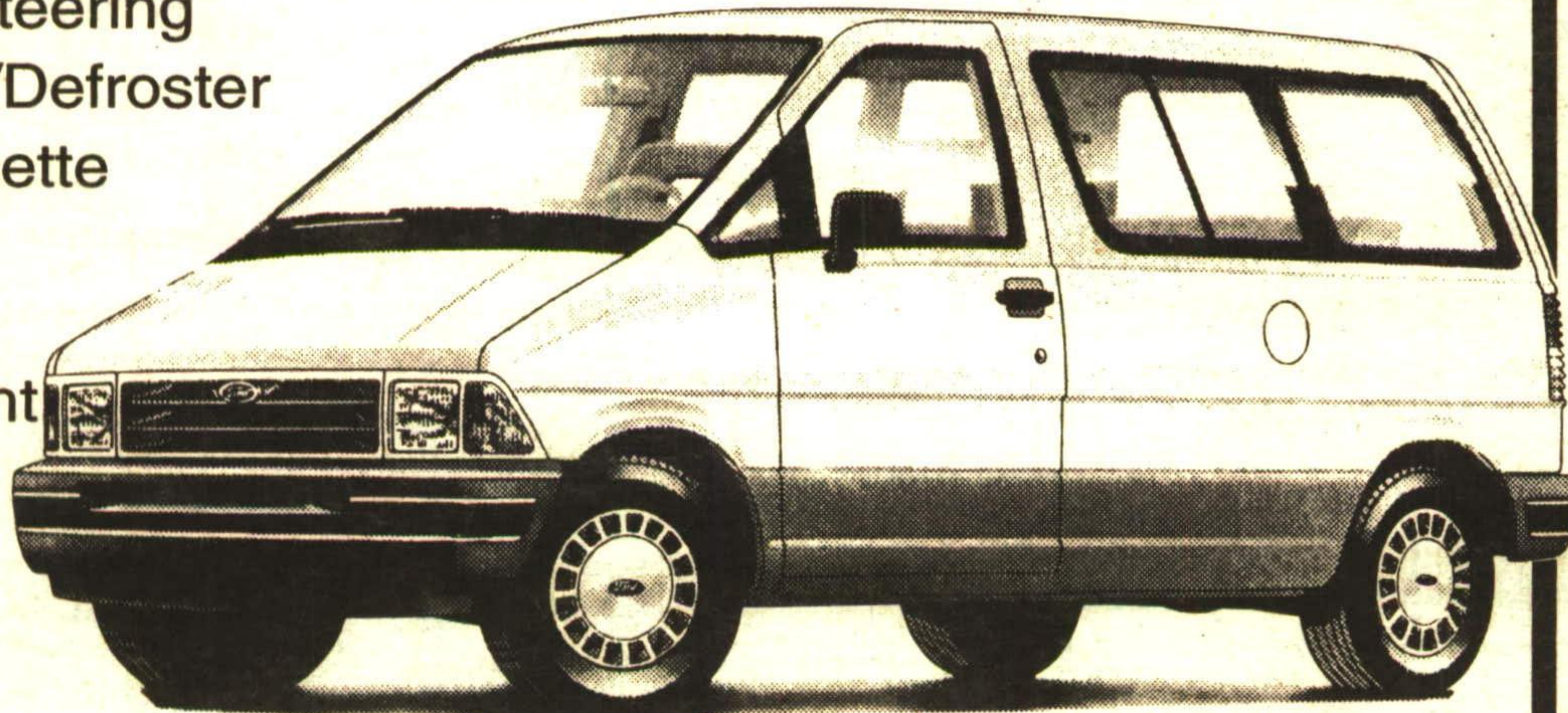
**Number
1
In Customer
Satisfaction**

AEROSTAR

- 7 Passenger XL Trim
- Dual Captains Chairs
- Auto Overdrive Transmission
- Air Conditioning
- Speed Control/Tilt Steering
- Rear Wiper/Washer/Defroster
- AM/FM Stereo Cassette
- Floor Console
- Luggage Rack
- Deluxe Tu-Tone Paint
- Privacy Glass
- Plus All Standard
Factory Equipment

**AVAILABLE
3.9%
FINANCING
UP TO 48
MOS. ON
AEROSTAR**

**19
AVAILABLE**



*Rebates assigned to dealer. Financing for a maximum of \$18,000 up to 48 months. (Limited time offer)

CAPITAL



QUALITY IS JOB ONE!

- 2 GREAT LOCATIONS -

ACTON
MAIN ST. N.
(HWY. #25)
853-2370

and

GEORGETOWN
HWY. #7
AT DELREX BLVD.
873-1626

**Number
1
In Customer
Satisfaction**

**GREEN THUMB
GARDENING**



By **CHRISTINE COLE**
**LANDSCAPING
WITH HERBS**

Herbs do not have to be limited to the confines of a herb or vegetable garden. Many of them have great landscape value. Using herbs this way will provide an attractive display, a pleasing aroma and fresh seasonings.

The culinary plants also have a no hassle culture. They thrive in poor soil. A rich, fertile soil will produce a lush, attractive plant but the flavor will not be as pungent or strong.

The following are a few that you might consider for your landscape:

THYME has always been prized for its ornamental use. It is a fast growing ground cover with small purple flowers in mid-summer. It releases a light fragrance when it's tiny, velvety leaves are slightly crushed.

GARLIC adds an exotic flair to a garden. Its tall, flat onion-like leaves provide contrast to other plants. During the summer it displays a large white globular flower head.

TRICOLOR SAGE has attractive multicolored foliage that grows about 2 feet high. The leaves are oblong in shape and slightly woolly. It has the same flavor as the regular green-leaved sage.

LEMON BALM is a vigorous, spreading plant with unusual wrinkled leaves that have an intense lemon scent. Makes an attractive ground cover.

CHIVES grow in tight clumps composed of short tubular leaves. During mid-summer it displays a bright purple ball-shaped flower. Even the seed heads are attractive when the flower has faded.

Each week Christine Cole of Tuitman's Garden Centre and Landscaping, Highway 25, 1 mile south of Acton, 853-2480, will be presenting helpful tips and information to assist you in creating your garden show-place!

**TUITMAN'S
GARDEN CENTRE**
ACTON
853-2480