

NOTICE!

FACTORY REBATES ON MAYTAG

LIMITED TIME OFFER!



MAYTAG HEAVY-DUTY WASHERS

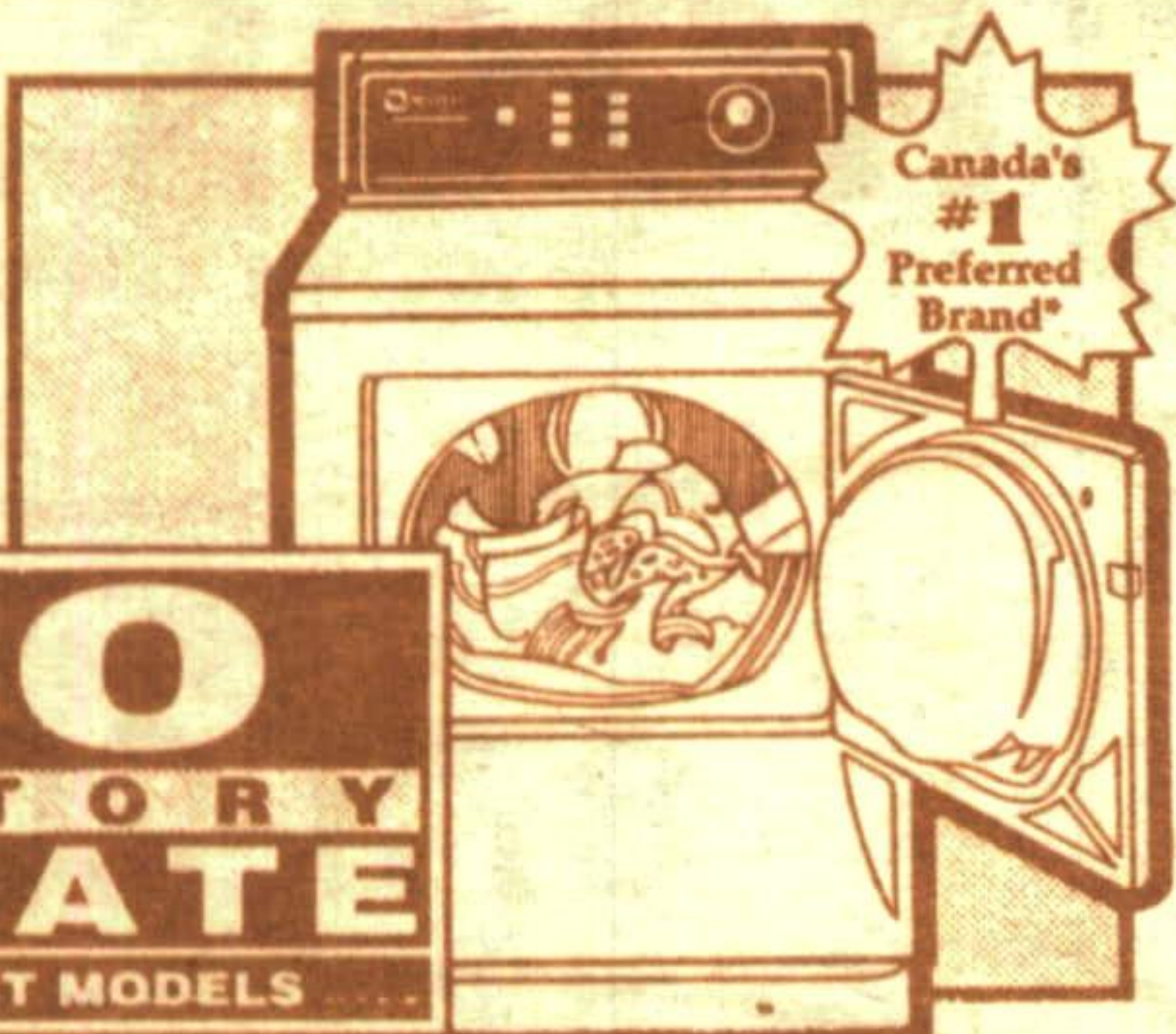
- Built to last longer, fewer repairs
- Costs less to service
- Porcelain enamel top

\$50
FACTORY REBATE
ON SELECT MODELS

*Based on Canadian consumer brand preference surveys

MAYTAG BIG-LOAD DRYERS

- Commercially proven
- Larger door opening



\$40
FACTORY REBATE
ON SELECT MODELS



MAYTAG JETCLEAN™ DISHWASHERS

- No pre-washing
- Dependably Quiet
- Unsurpassed capacity

\$50
FACTORY REBATE
MODEL WU1005

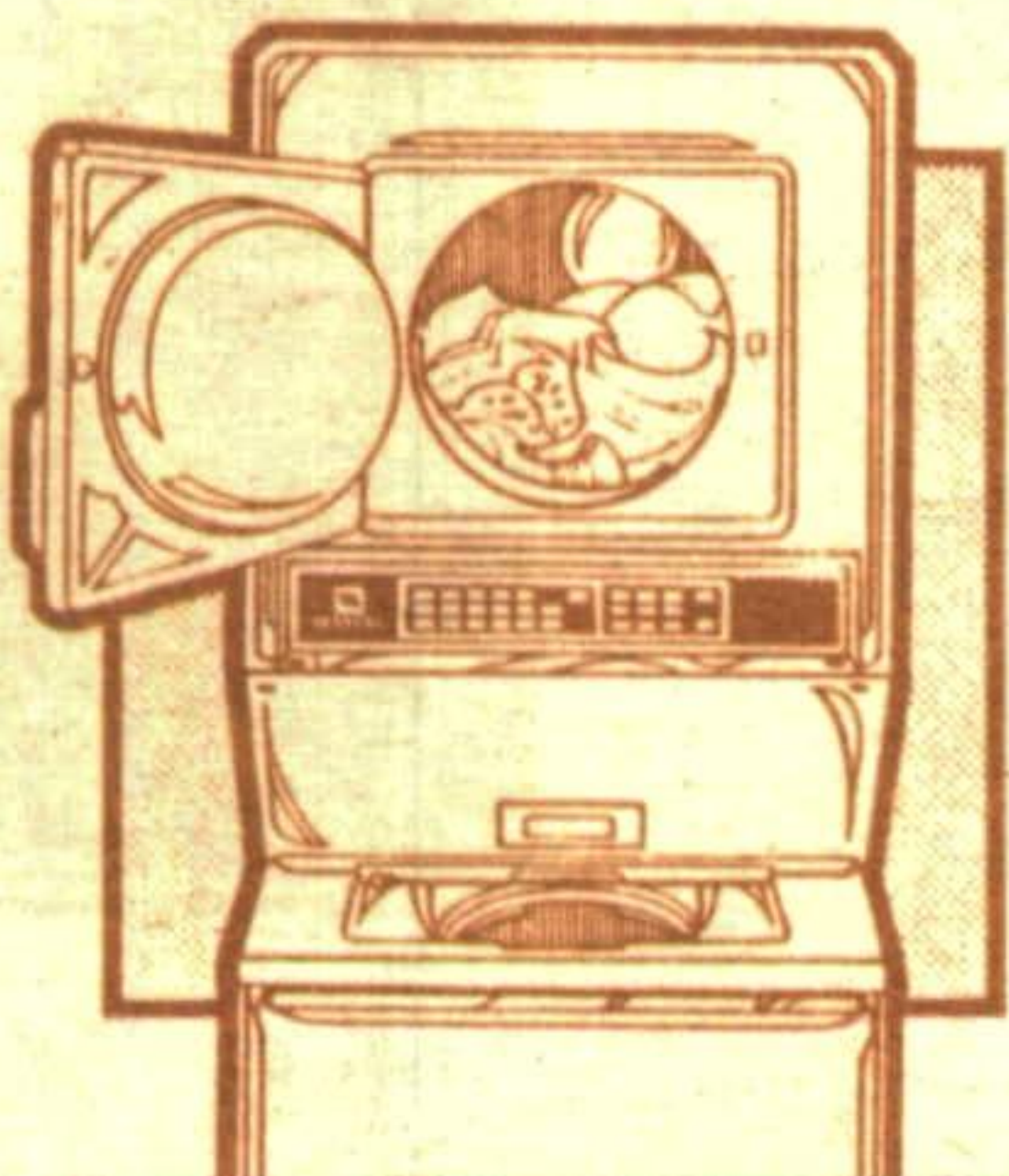
MAYTAG REFRIGERATORS



\$100
FACTORY REBATE
SIDE BY SIDE MODELS

- Heavy Duty Shelves
- Flexible Storage
- No-Break™ Bins

MAYTAG STACKED PAIR



\$60
FACTORY REBATE
ALL MODELS

- Full-size washer & dryer
- Only 27 1/2" wide
- Computer touch controls

Appliance Parts **877-2551** Mon. - Sat.

GOODLET'S

86 Main St. S. Downtown Georgetown



homeland furniture
3 floors quality furniture
Credit Terms available



Serving Halton Hills and Area for more than 50 years



Emily and Angus McDonald pose proudly on their wedding day, August 9, 1899 in Limehouse

McDonald family of Limehouse was a part of our heritage for a century

By JOHN McDONALD

On Saturday, September 28, 1991, my brother Fred and I helped move our aunt, Mrs. Archie (Doreen) McDonald and family from Limehouse.

This move represented something very historic in our family chronicles and perhaps to the social fabric of Limehouse and area.

On this very day, the last descendants of Angus and Emily McDonald left the village of Limehouse after nearly a century.

It would have been in the middle 1890's that young Angus McDonald, a "hewer of wood," arrived in the Acton and Limehouse area from Grey County, probably with a crew of barn builders and eventually fell in love with Emily Scott. Emily (1881-1966) was one of 10 Scott children who spent most of their lives in the area. Her parents, William and Rachael Scott were Equestrian Township pioneers.

Angus and Emily were married on her father's farm on August 9, 1899. Her father was William Scott (1847-1923), who owned the farm immediately north of Limehouse

Presbyterian Church on the Sixth Line. According to The Acton Free Press, "The marriage took place on the lawns under a beautiful arch and in the presence of a large number of relatives. The bride was attired in a steel grey dress and looked charming and the bridegroom looked the picture of happiness."

The newlyweds made their first home in Acton. By 1899, Angus was an employee at Beardmore's Tannery and they later moved to Blue Springs. Except for a very few years, the McDonalds worked and raised their family in or near Limehouse.

It was on June 5, 1925 that Angus purchased the farm known as Lot 24, Concession 4 in Esquesing Township. This location was on the Grand Trunk railway line (later known as the Canadian National) immediately next to a section of the Niagara Escarpment. The site had been used for quarrying and lime works since 1872 and was known as Dolly Varden. Angus worked the farm there and was an employee of Canada Lime Works.

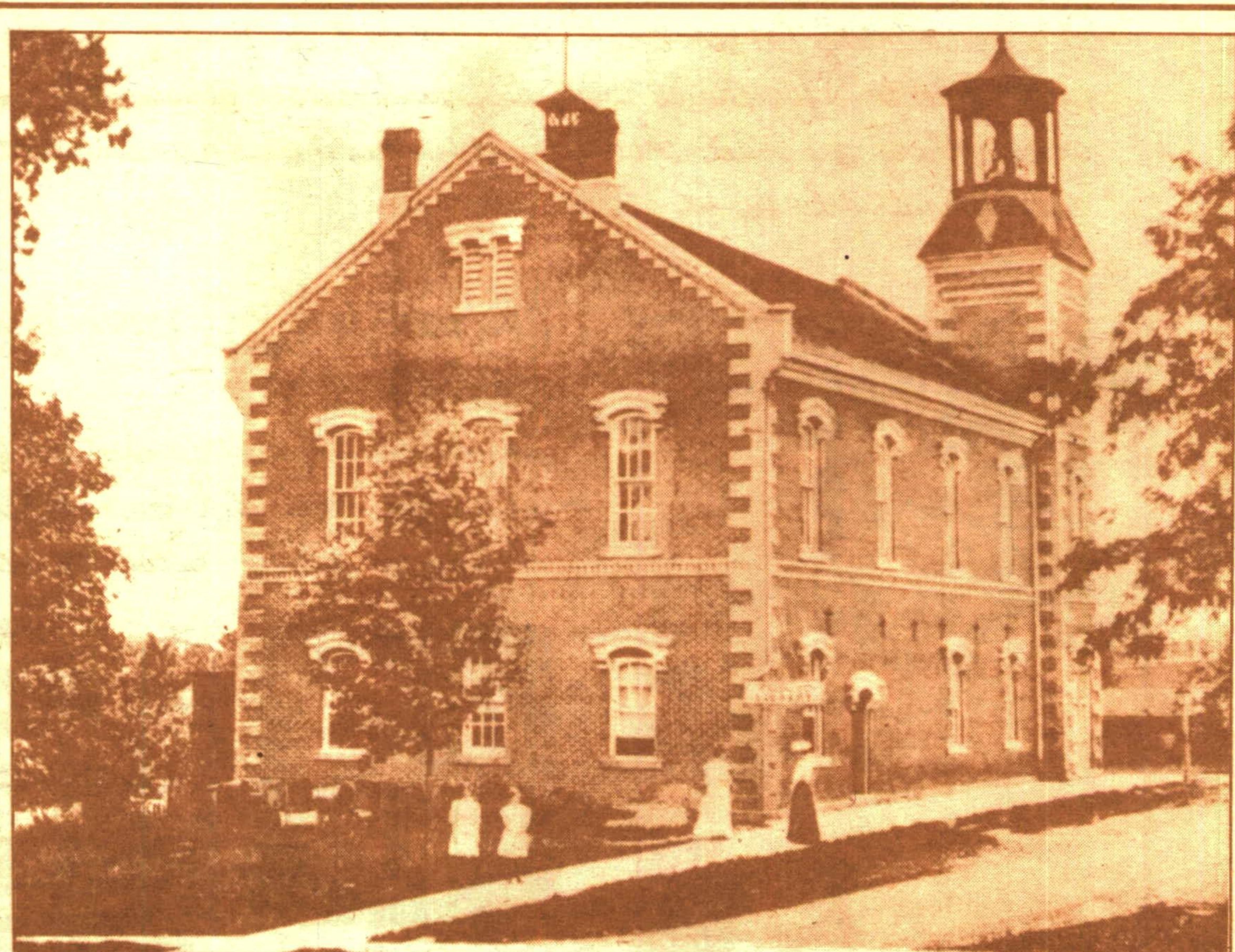
Angus and Emily had 11 children: John William (1900-1958), Ronald Alexander (1903-1967), Christina Pearl (1905-1985), Angus Joseph (1907-1965), Arthur Kenneth (1909-1977), Margaret May (1911-1981), John Russell (1913-1967), Archibald Robert (1915-1987), Hector Scott (1917-1938), Clifford Daniel (born in 1919 and lives in Georgetown) and Norman Hugh (born in 1923 and lives in Huntsville).

Each child, and many of their descendants, lived and worked in either Limehouse or neighboring Dolly Varden at some point in their life. All would have attended Gibraltar School (the old Limehouse School on the Fifth Line, south of the village.)

Angus, who was born in Glenleg Township, Grey County, in 1869 died at Guelph in 1934.

The Berlin Wall has come done. The Americans and Soviets are sorting out their differences. The last of the McDonalds move out of Limehouse. It is a changing world.

I hope this will inspire others to submit some letters/articles about their ancestors.



Georgetown Town Hall

Built in 1878, the town hall stood on Guelph Street at the corner of Cross Street (across from the present Ambulance Building). Gradually abandoned by the Town after the new

municipal building was built on Main Street in 1948, the old town hall was destroyed by fire in 1965.