



COUNTRY ROADS

Treat yourself to a countryside tour when everything is a blaze of colour.....

Here are just a few of the interesting places to stop and visit while attending the local fairs and fall events!

**** **TERRA COTTA HARVEST OF COLOUR** ****

Sept. 29th. 8 a.m. to 4 p.m. at
Terra Cotta Conservation Park
Crafts • Wagon rides • Old-time fiddlers etc.



Acton Fall Fair THIS WEEKEND

Friday, Saturday and Sunday September 13, 14, 15th.

Friday	Saturday	Sunday
Midway Opens Queen Contest	Baby Show Heavy Horse Pull	Antique Tractor Pulls Pet Show



The Brass Thimble



WILDLIFE ART, PRINTS, POTTERY, CARVINGS,
CRAFTS BY CANADIAN ARTISANS
QUALITY CUSTOM FRAMING AT COUNTRY PRICES

TUESDAY - SUNDAY 11-5

KING STREET, TERRA COTTA

1-416-873-1007 MARILYN LAUGESSEN

Clay Concepts Studio & Gallery



Carol-Ann Michaelson

523 Main Street
Glen Williams, Ontario
L7G 3T1
(416) 873-2147

Greens In Things

A variety of unique gift items
Pine Accessories
Specializing in silk plants & flowers

Marley and Fred Rogers
416-838-2718

West of Hwy. 10 on Peel Rd. 12
(1448 Old Baseline Road)
Located North of Cheltenham

Top O'Trafalgar Farm

Apple Farm

Country Store



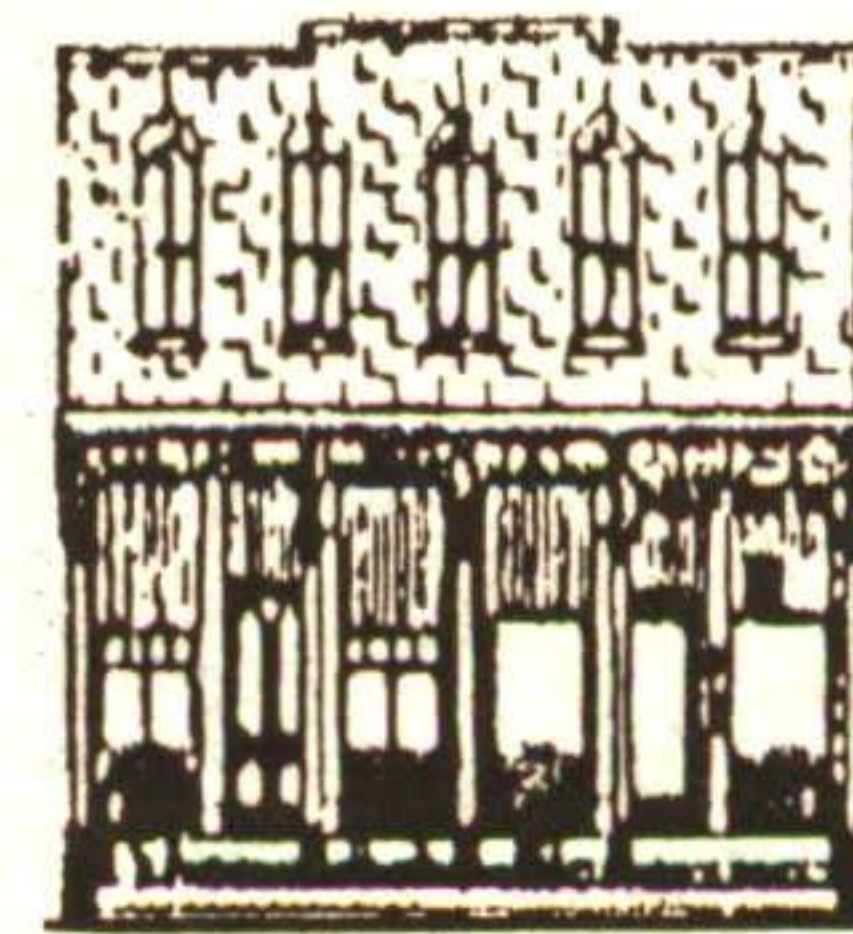
Apples - twelve Varieties
also Organically Grown
Apple Cider from our Press

Hay Rides
Miniature Horses
Hiking Trails
& Picnic Tables

519-833-7111

Trafalgar Rd., Erin
9 km. North of Hwy. 7
2 km. South of Hwy. 24

CHELTENHAM GENERAL STORE



Crafts - Collectables
Frozen Yogurt
Cappucino &
Cake Room

416-878-2729

British Gifts, Books, Toys & Foods



149 CHURCH ST. E.
ACTON, ONT.

519-853-1633

Mon. - Sat. 10 - 5:30 p.m., Sun. 12 - 5:30 p.m.

Blue Willow Tableware
Thomas the Tank
Beatrix Potter
Soaps & Toiletries

Biscuits, Tea
Jams, Marmalades
Chocolates & Sweets

Chudleigh's

AN ENTERTAINING TASTE OF THE COUNTRY

Light lunches, fruit pies, baked goods,
gourmet foods, children's play area, wagon
rides and birthday parties.

In the Fall, pick your own apples.

Hwy. 25, 2 minutes north of the 401

(416) 878-2725

(416) 826-1252

Halton County Radial Railway Museum

located on Guelph Line

Rockwood

ALL ABOARD!

519-856-9802

SEPT. & OCT.: Sat., Sun. & Holidays

Hours: 10:00 a.m. to 5:00 p.m.

FALL EXTRAVANGZA Sun. Oct. 6

Numerous cars available for your tour
through the fall countryside

Hwy. 7 East to County Road, 44 South on Guelph Line, or
Exit 312 off 401, North



Fall Foliage Tours

Mystery Day Trip
October 10, 1991
Tour #1417 \$40.00 P.P.
Tour includes: Transportaiton, Lunch, and more.
Bring money because there will be a chance to buy things. Join us for the fun and excitement of not knowing where your going.

Denny's

DENNY'S BUS LINES LTD.
R.R. 2, Acton, Ontario L7J 2L8

Day Trip to Kitchener Area

October 30, 1991

Tour #1418 \$35.00 P.P.

Tour includes: Transportaiton, Hot Buffet Luncheon, Woodside Hist. Site, 2hr Countryside tour with stops at covered Bridge, an Old Order Mennonite Farm Shopping in St. Jacobs.

AGAWA CANYON 3 Day Trip

Departing: Sep. 20 thru Sept. 30

Oct. 5 & Oct 12

Single \$415 - Double \$315 - Twin \$325

Triple \$299 - Quad \$285

Tour Includes: Transportation, 2 nights accommodation all day train ride into Agawa Canyon, cruise on Chi Cheemaun, 2 Breakfasts, 1 lunch, 1 dinner, luggage handling, escort service.

All Prices Include G.S.T

Erin 833-9117 Acton 853-3641



MILTON FARMER'S MARKET

"ONTARIO'S ONLY MAIN STREET MARKET"

DOWNTOWN MILTON FROM MARTIN TO JAMES STREETS
EVERY SATURDAY MORNING UNTIL OCTOBER 26th



A PROJECT OF THE MILTON CHAMBER OF COMMERCE
IN CO-OPERATION WITH DOWNTOWN BUSINESS IMPROVEMENT
AREA AND FOODLAND ONTARIO

