

Milton couple claim top prize in 'Rally'

Sandra and Frank Waugh from Milton are the lucky Grand Prize winners of \$2,500 in prizes from "Rally 'Round Halton." "Rally 'Round Halton" was a family orientated treasure hunt. Participants used a map to follow the route to various tourism attraction sites around the Region. At the designated sites, participants recorded answers to trivia questions on a ballot to be eligible for a grand prize draw. The Waughs travelled to 16 tourism sites around the Region to answer the trivia questions. The answers to the trivia questions were entered on a ballot that was drawn for the grand prize at the completion of this annual event.

Regional Chairman Peter Pomeroy made the prize presentation which included season passes to local attractions, gift certificates, dining passes, and gifts.

Norval

Booth at Steam-Era

By KAY WILSON

Norval United Church morning service on Sept. 8 will be at 11:15 a.m. The Covenant Service will be held that evening at 7:30 p.m. in Norval Church, when the Rev. Ann Rowsell will be inducted into the three charges of Home, Huttonville and Norval. The service and guest speaker will be in charge of the Dufferin, Peel Presbytery and a joint choir will represent the three churches.

A social hour will follow. Steam Era and Norval Church Booth Steam Era is over for another year with good weather and attendance down slightly from last year, which was still good.

Norval United Church members were there with their booth and home-made pies a specialty. The warm days meant cold drinks and ice cream to top the pie, so the ice-cream dippers had a busy time. Cool evenings gave way to hot dogs and coffee.

Thanks to Mary Crawford who

Over 35 businesses in Burlington, Halton Hills, Milton and Oakville donated items for the prize package.

The Waughs have been residents of Milton for 10 years.

"I can't believe we won," said Sandra. "This really made our day! I just picked up the flyer while berry picking at Andrews Scenic Acres and we drove the route over a couple of days. We even went back to some sites twice to make sure we got the answers right."

The contest ran from June 8 to June 23. The goal of the program was to encourage Halton residents to be aware of the tourism sites in the Region. "Rally 'Round Halton" was co-ordinated by Halton Tourism on behalf of tourism related businesses in Burlington, Halton Hills, Milton and Oakville.

had her entire family helping - husband Jack, sons Don and his wife Caroline, Bill and his wife Lynn and daughter Bonnie Neely. The boys and Jack made various trips to Steens Dairy at Erin, as well as the setting up and taking down the booth. Mary also set up a pie making bee, when the ladies turned out over 50 pies. Many thanks to Mary and her family as well as all church members who helped out in this church project.



873-3377

846-8500 Tor.

873-6790 Res.



SANDRA HURLEY
Sales Rep.*

MAPLEVIEW ESTATES SALES OFFICE NOW OPEN!



Drop by Gardiner Drive on Saturday or Sunday on your way to the fair!

This is the final development of 23 single family homes in the "Old Park Area"! Backs onto fairgrounds, steps to schools, golf tennis, cross country skiing, churches, cultural centre, downtown shopping and Civic Centre. For an individual preview please call Sandra Hurley* at 873-3377. CW91-006



"THE SANDS"
\$120,000

Condo living at its best. Immaculate with upgrades, laundry room, 5 appliances, added storage room, tennis courts, indoor pool and much more. For full details, please call Sandra Hurley*. Asking \$120,000. CW91-121



DEMAND THE BEST

This Ricciuto Custom Home is being built for you on 1-1/2 acres in the Silvercreek Estates on Lot 15. This gorgeous home will feature 3000 sq. ft., a 3 car garage and can be yours in only 90 days. Price \$389,900. Please call Sandra Hurley* for more information. CW91-169

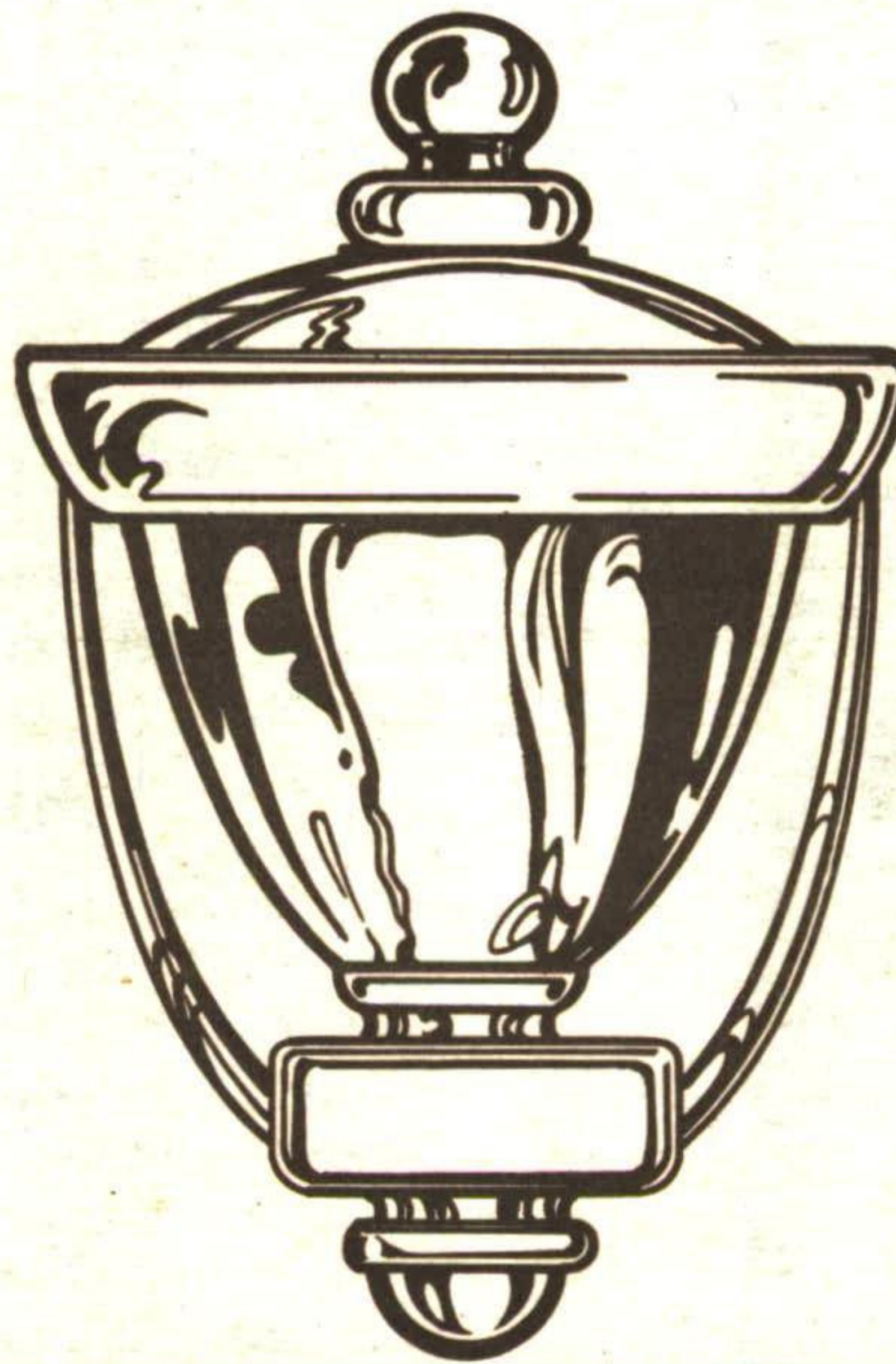


Saturday, Sept. 7th 1 - 4 p.m.
7716 Creditview Road

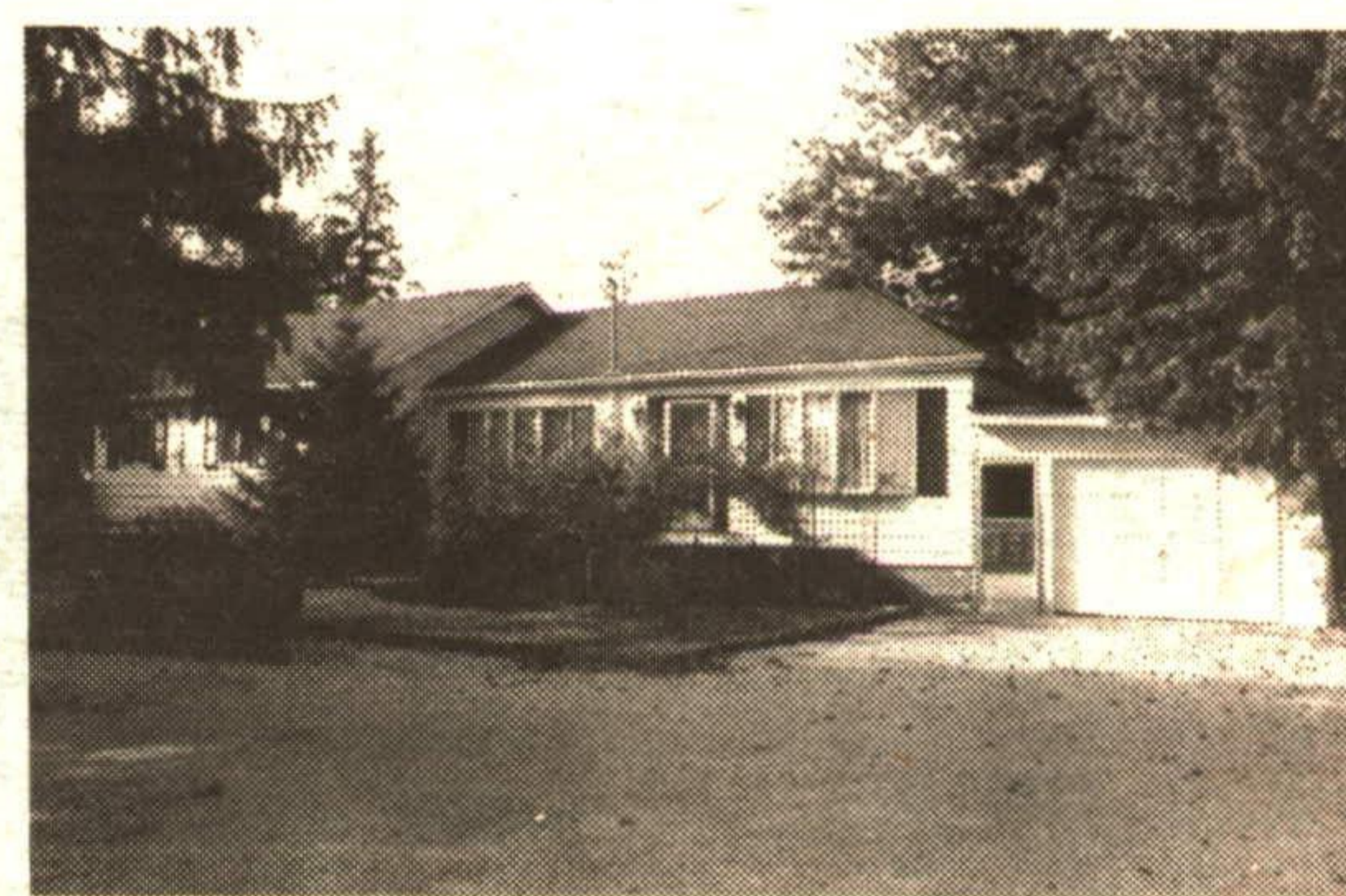


1850 solid brick house on 66' x 147' lot in Churchville. Not a drive-by, must be seen. \$254,000.00. DIRECTIONS: Steeles Ave. to Creditview Road South to sign. 91-393

OPEN HOUSES



Sunday, Sept. 8th 1 - 4 p.m.
R.R.#2, Norval



Beautiful, private 1600 sq. ft. bungalow on lot 112' x 300'. Convenient for the commuter, just West of Huttonville. Price amended to reflect the market \$267,900.00. DIRECTIONS: Winston Churchill Blvd., North of Steeles Ave., South of Embleton. 91-324

FOR MORE INFORMATION, CALL JOAN ROLLINGS, SALES REP.
AT 874-3040 (TOR.) OR 451-4077 (RES.)

ARTHUR F. JOHNSON & ASSOCIATES
LIMITED REALTOR

247 Guelph Street
Georgetown

877-5165

SAME DAY WINDOW AND SCREEN REPAIR SERVICE
15 Years Experience

• Custom Mirror & Plexiglass Cutting & Shaping

RESIDENTIAL - COMMERCIAL
- INDUSTRIAL - RV's AND INDUSTRIAL EQUIPMENT

24 HRS. 7 DAYS A WEEK

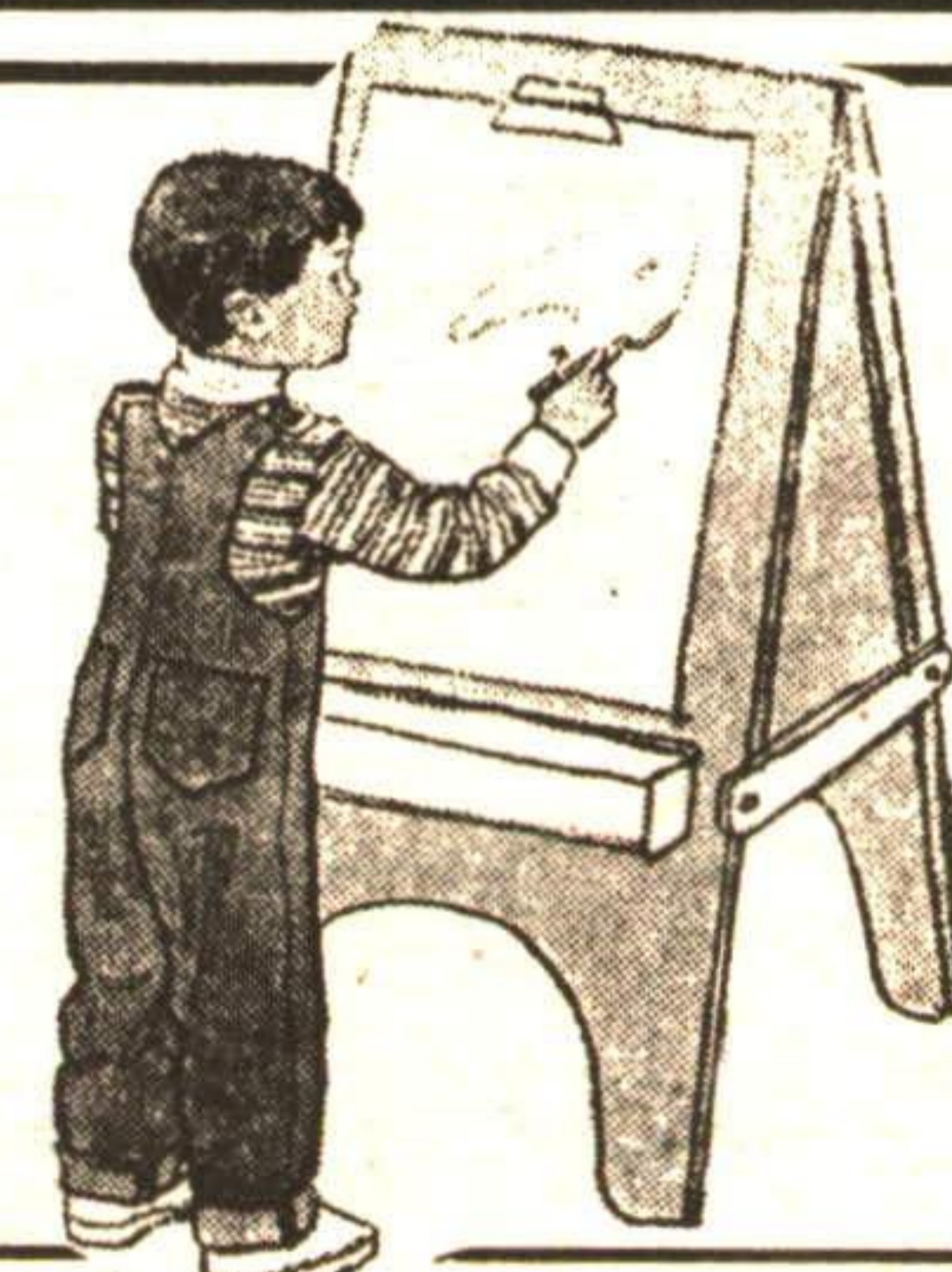
Call Paul

(416) 873-8722



Just for Kids

Day Care - Nursery School - Diaper Service - Toys and more



The Village School
DAY CARE CENTRE

18 MONTHS TO KINDERGARTEN

OPEN 7 A.M. TILL 6 P.M. SUBSIDY AVAILABLE

PROFESSIONAL CARE

HOT MEALS

TRANSPORTATION TO & FROM LOCAL SCHOOLS

60 PARK AVE.

877-7310

GEORGETOWN



JOIN Discovery Toys now and earn a FREE STARTER KIT and FREE BONUS TOYS!

Most of our consultants are enthusiastic mothers with small children who are looking for:

- the FLEXIBILITY of being self-employed
- excellent COMMISSION, RECOGNITION and PRIZES

For full details on this limited time "INVESTMENT REBATE PROGRAM," to book a FUNDRAISER, HOME OR OFFICE DEMONSTRATION call:

MARNIE OLSON
(416) 877-5018

ELIZABETH KERR
(416) 873-8647

Music For Fun

Preparatory Music Classes for Children given by Sharon Dutton, B. Mus. Ed., A.R.C.T.

Classes will start in mid-September in Georgetown and will be offered in three levels for ages 2-6.

FOR MORE INFORMATION, PLEASE CALL Sharon at 873-1177