

ARTHUR F. JOHNSON & ASSOCIATES

LIMITED REALTOR
247 GUELPH ST., GEORGETOWN L7G 4A8
* Sales Representatives
877-5165 874-3040 833-9714

GET SOLD CALL US!!



Promise Made



Promise Kept

HOBBY FARM



7.8 acres of the most gorgeous country setting. Our 4 bedroom raised bungalow sits high on a hill overlooking a 1/2 acre pond & an acre of mature forest. Complemented by our 25' x 50' horse barn & paddock area this home is excellent value at \$339,000. Call Linda*...your country specialist. 91-351

28 ACRES



Explore nature when you visit your home. From the horse barn & paddocks to the stream through the trails you will feel like you have your own conservation area. Our 4 bedroom bungalow is complemented with a huge country kitchen overlooking a welcoming pool surrounded by spectacular landscaping. Call Linda Armstrong* to view. 91-314

CUSTOM EXECUTIVE - PARK AREA

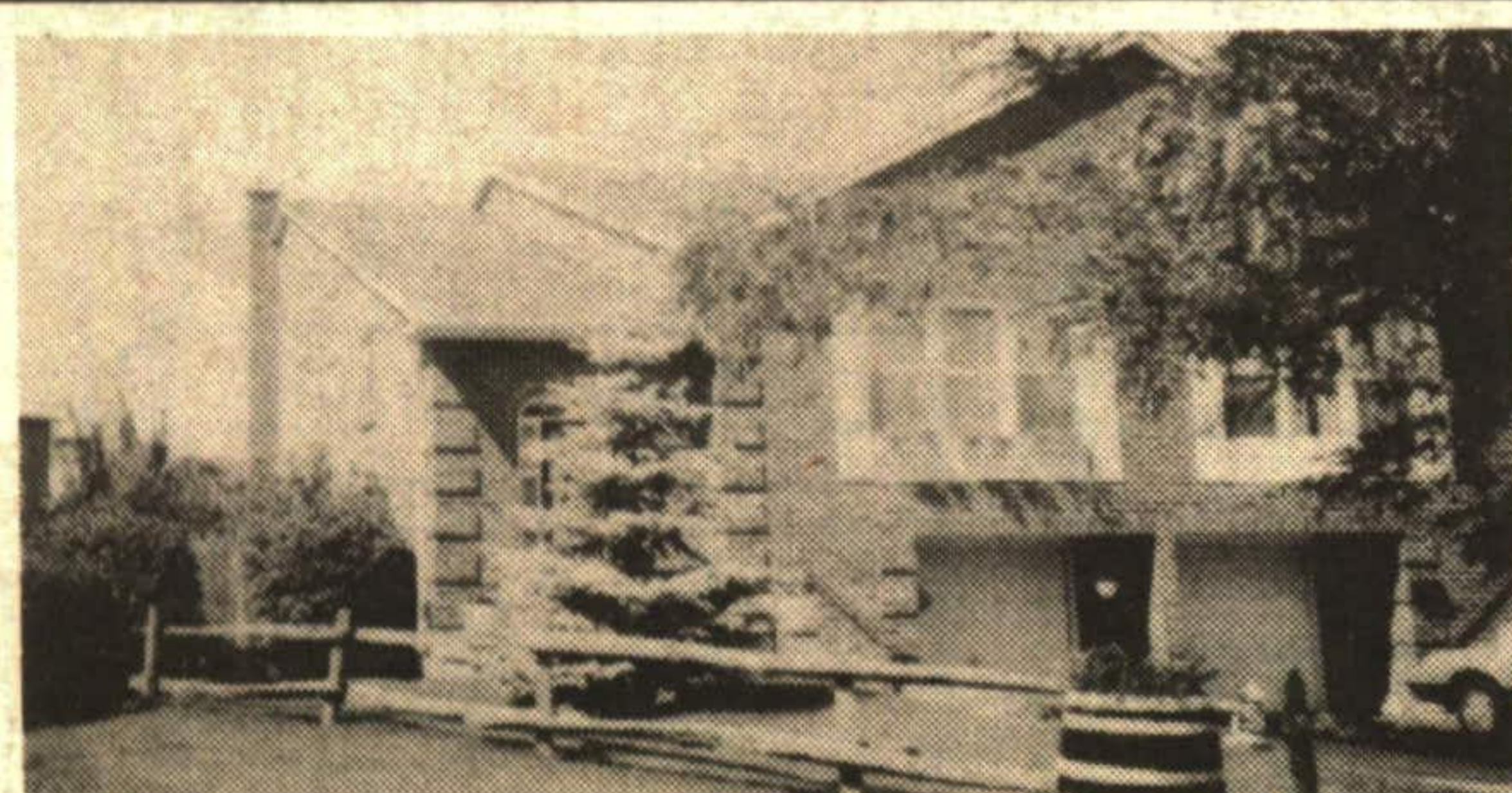


Spectacular unique design - vaulted ceiling and skylight in family room with fireplace and sliding walkout to deck and totally private yard backing and siding onto the woods. Large country kitchen with solid pine cupboards. Main floor laundry with yard & garage entry doors. First time offered - Call Sandra Nairn*. 91-373



Linda Armstrong*
Res. 873-3070

NEW! NEW! NEW! TREED RAVINE LOT



Sandra Nairn*
Res. 873-6146



Tom Comery*
Res. 519-855-4856

2,000 sq. ft. - \$199,900. Super large 3+ bedroom home on pie-shaped lot at end of cul-de-sac. Fireplace, main floor family room. Call Brenda Payton* for more details. 91-326



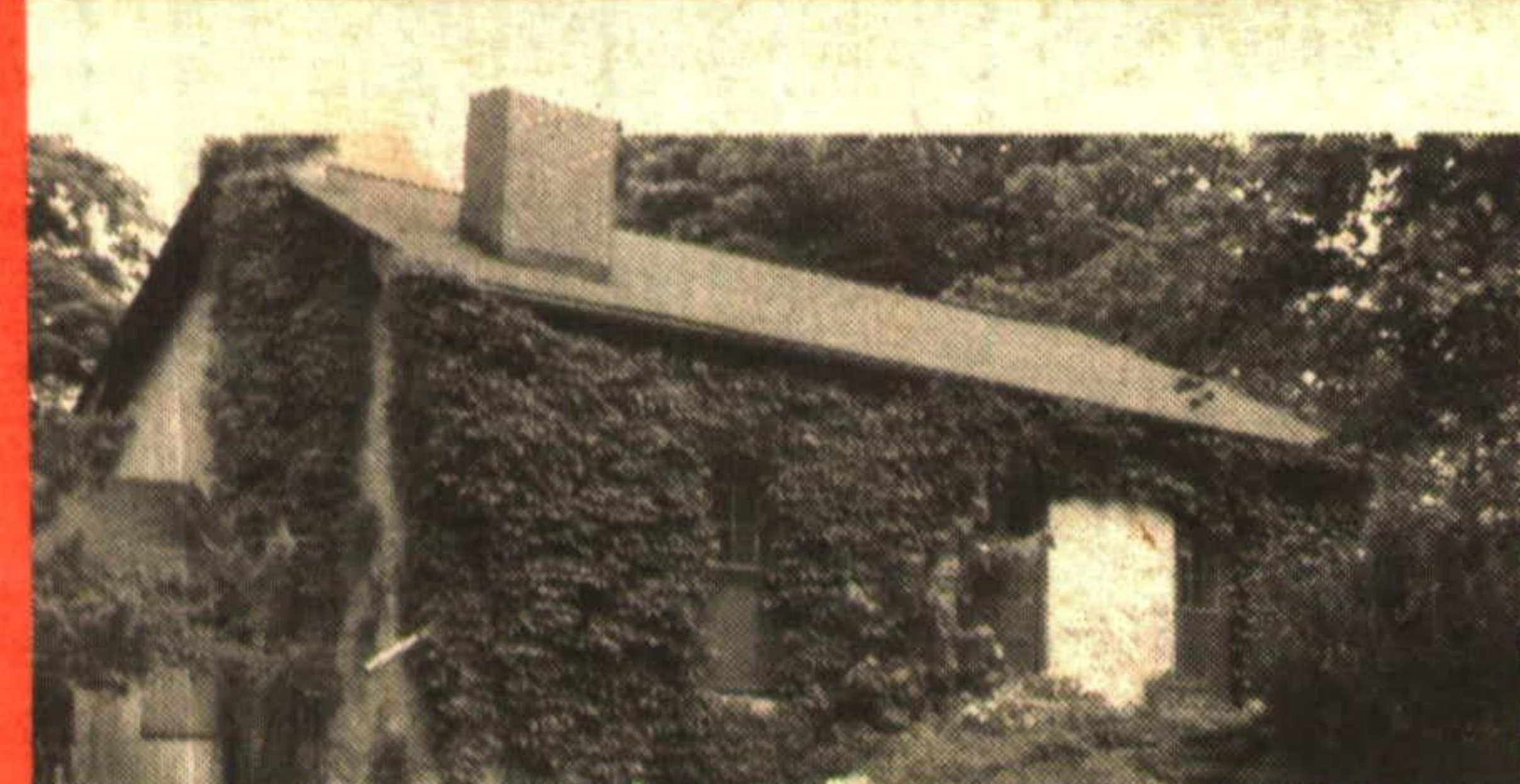
Brenda Payton*
Res. 877-7578

\$239,900. Flamingo model, 3+ bedroom home with main floor family room and den. Mature trees and privacy await your viewing. Call Brenda Payton* for all the details. 91-342



Ev Patterson*
Res. 877-9096

1862 SCHOOL HOUSE



Impressive solid stone pre-Confederation school house set on nearly 4 beautiful, tranquil & private treed acres with stream. Architecturally updated. Ideal artist studio or weekend paradise. To view this gorgeous property call Tom Comery*. 91-313

CUSTOM EXECUTIVE - PARK AREA



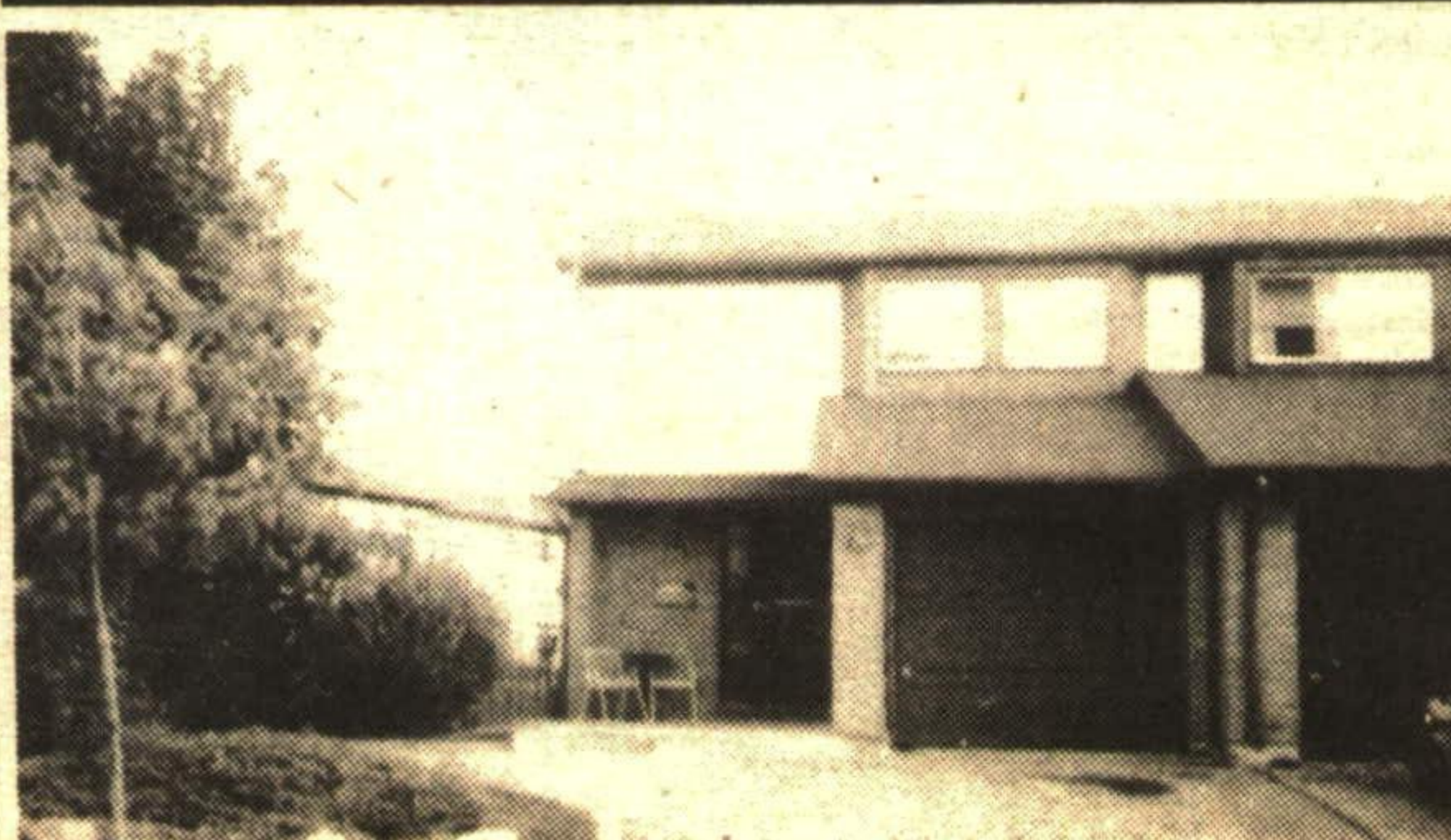
Unique features. Master suite - loads of closets, sitting area, overlooking L.R. & D.R. 6 pce ensuite with jacuzzi, bidet, 3 other br's, 4 other baths, 2 f.p.s., - walkouts, kit with Jennair, quality broadloom, light fixtures & much much more. A must to see. Call Ev Patterson*. 90-339

SOLID LOT! SOLID COMFORT!

ON 2 ACRES

Bright & beautiful 2 yr. old 3 bedroom Confederation log home. Features living room with cathedral ceiling & skylights. Open pine kitchen with walkout to deck. Shows beautifully. \$299,000. Call Tom Comery*. 91-293

NEW LISTING



Only \$120,900. 3 bedroom freehold townhouse, garage, end unit, quiet. Walkout from DR to deck, shows very well, many extras. Call Ev Patterson* for more info. 91-349