

Do you roll from the top? Or pull from the bottom?

I read an article recently about a certain psychologist who analyzed people by the way they placed the toilet paper on the holder.

Honestly.

His theory evolved around a person who places the roll on the holder so it rolls off the top tends to be outgoing, while one who mounts it the other way, is a little introverted.

I agree, the man has too much time on his hands and is grossly overpaid.

But I had to stop and think about the subject for a moment.

I always place the roll so it rolls off the top, while everyone else in my household tends to put it on the opposite way.

That is, when they actually do replace it.

Most times, I enter that little room of solitude to find an empty roll staring me in the face.

Of course, as most people are prone to do, I almost never notice the roll is empty until I require its use.

The cupboard the replacement rolls are stored in is about four and a half feet away, so it always makes for some interesting acrobatics to reach for the new roll.

But enough of that. Back to the original discussion.

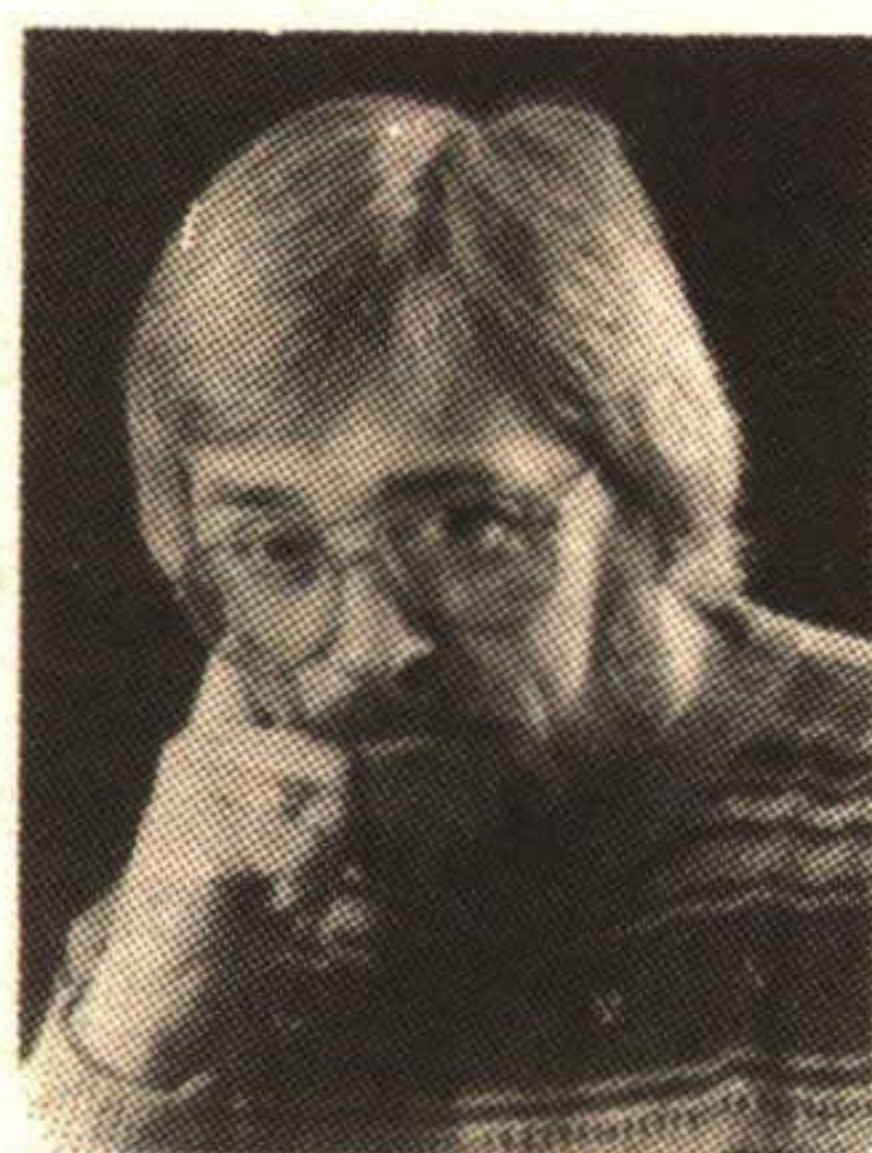
This expert says we all approach the matter from a different perspective, and our approach determines how we mount the roll on the holder.

I wondered if the sex of the roll-replacer was considered in this experiment. After all, the chemistry of the person could be different with the change in gender.

Because my entire household (which are all female) tends to replace it the opposite way to me, I'm really curious to ask this researcher if he really did his homework.

A TED BIT

By
TED
BROWN



After all, I tend to be outgoing, but I sure wouldn't say the rest of the Brown household is a bunch of recluses. Not on your life.

If anything, at times it would be nice for them to become a little more conservative in their approach to the outside world.

But what does this all prove?

Did the researcher check into the affect of colored toilet paper versus white on the experiment? Or recycled paper against the unused variety. (I'm always a little suspicious about "recycled toilet paper.")

Did he actually enter the bathrooms of several hundred householders and watch them to see which way they put it on?

Or did he just stand in the local supermarket and ask the people buying their rolls, "Excuse me, I'm conducting a survey...." then go back to the office and analyze each one?

I don't think so.

After some casual discussion in the office, I decided to conduct my own survey of the preference of my co-workers.

I surveyed 16 people in the office; eight men and eight women. The results were astounding.

It was an even split. I got six "off the top" answers and six "bottom unwinders." And each one with an answer was adamant about it. This was serious stuff.

Of course, I also found four

people had no preference. To quote a few;

"It depends how I pick up the roll," followed by "it doesn't really matter, as long as there's paper left," and a really interested person who simply said, "Who cares?" The last and perhaps most appropriate answers came from one who replied, "Who gives a s—?" (Incidentally, those answers were evenly split between two men and two women.)

On the other hand, the ones with an opinion were really definite about their preference.

"Every bathroom in my house has it from the bottom; I wouldn't allow it any other way," said one.

Another felt very strongly about it, and even admitted to changing the roll of toilet paper when using the facilities at friends' homes.

And yet another gave the reason of it's harder for the little ones in the home to spin it off the roll in a pile on the floor when it rolls off the bottom.

All had sound reasoning and every one was quite serious about it.

And gender of the person didn't seem to show any pattern.

So to get to the "bottom" of this subject, a spokesperson from Kimberly-Clark was contacted to give the official stand from the giant toilet paper manufacturer.

Kimberly-Clark, officially states, "The roll should unwind from the bottom," but I still think that's only one person's opinion.

Besides, Ann Landers says its supposed to roll off the top, and she's probably saved more marriages and family feuds than Kimberly-Clark.

But I found another interesting question came up during the entire survey.

"Do you leave the seat up? Or down?"

That's another story.

Blaze ...

CONTINUED FROM PAGE 1
don't know what to do now...."

Although Adams hadn't moved into the house yet, interior renovations were being conducted at the time. A painter was the last person at the home, according to the Fire Department, but he had left before the fire began.

The cause of the fire was undetermined at press time, but the Hillsburgh District Fire Department (HDFD) is investigating. No injuries were reported.

According to Garry Robertson, assistant deputy chief with the HDFD, they "have a good idea" of what caused the blaze, but "nothing has been determined, yet."

"There were several cans of paint in the house — lids were left off, rags and newspapers lying around, cans of turpentine — and the painter was quite a heavy smoker..." Robertson said. "He had left and gone to lunch, the fire ignited and generated a quick, intense heat that just gutted the building."

The fire began at the rear of the house, but quickly spread to the rest of the home, he added.

All that's left of it are the stone walls, Adams said.

"I tell you, it's really turned me off old homes now," he added. "The lumber in them is so old, and so brittle, firefighters at the scene told me those homes go up just like that."

The home, recently sold to Adams, was the former family home of Lille and Tom Given.

GREEN THUMB GARDENING



By CHRISTINE COLE

July Gardening Guide

*The first week in July, the second application of Cygon 2E should be put on Birch trees to control Birch leaf miners. (This is an insect that causes the leaves to go brown). There is two generations of this insect per season and this application controls the second generation.

*Spring flowering bulb foliage should now be withered and drying. A slight tug will remove it from the bulb if it is completely ripened, if not leave it a little longer until it does come off easily.

*Prune flower heads off of shrubs and perennials that have finished flowering. (Ex. Spireas, Bergenia, Peony.)

*The end of July is the best time of the year to divide or move Irises.

*Pick finished flower heads off of annuals, otherwise they lose interest in flowering and put unnecessary energy into seed production.

*Sow Biennials and Perennial seeds for future flowers. (Ex. Hollyhock, Columbine, Baby's Breath, Canterbury Bells, Delphinium, Shasta Daisy.)

*Disbud (remove) flower buds from Hardy Garden Mums. This will keep them shorter and more compact. They will bloom in September or October.

*Thin fruit on fruit trees such as apples, pears, peaches, plums and nectarines. Cherries do not require thinning. Thinning increases the size and quality of the fruits. Also thinning permits improved air circulation around the fruit reducing chances of disease.

*Pick up and destroy any fallen leaves and fruits from fruit trees.

DENTURES

FULL DENTURE SERVICES
DIRECTLY TO THE PUBLIC

- New Dentures • Relines
- Repairs • Cleaning
- *Dental Insurance honoured
- *Wheelchair Accessibility

A.W. TRENTON, D.T.

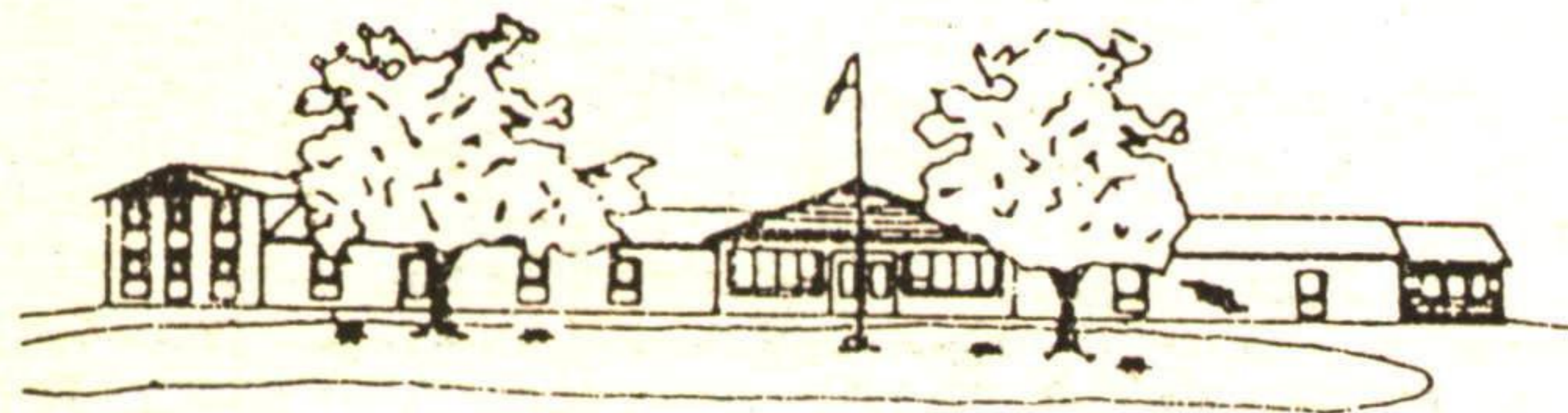
Denture Therapy Clinic

18 Church St.

Georgetown, Ontario

877-2359

EDEN HOUSE CARE FACILITY



RR #2 GUELPH

1-519-856-4622

"A Nice Place to Live"

NURSING HOME

Our brand new "State of the Art" nursing home facility is NOW COMPLETED with all the latest technology requirements.

-Licensed by Ont. Ministry of Health. - Accredited by C.C.H.A. - 24 hour professional nursing care. - One storey building. - Operating since 1969.

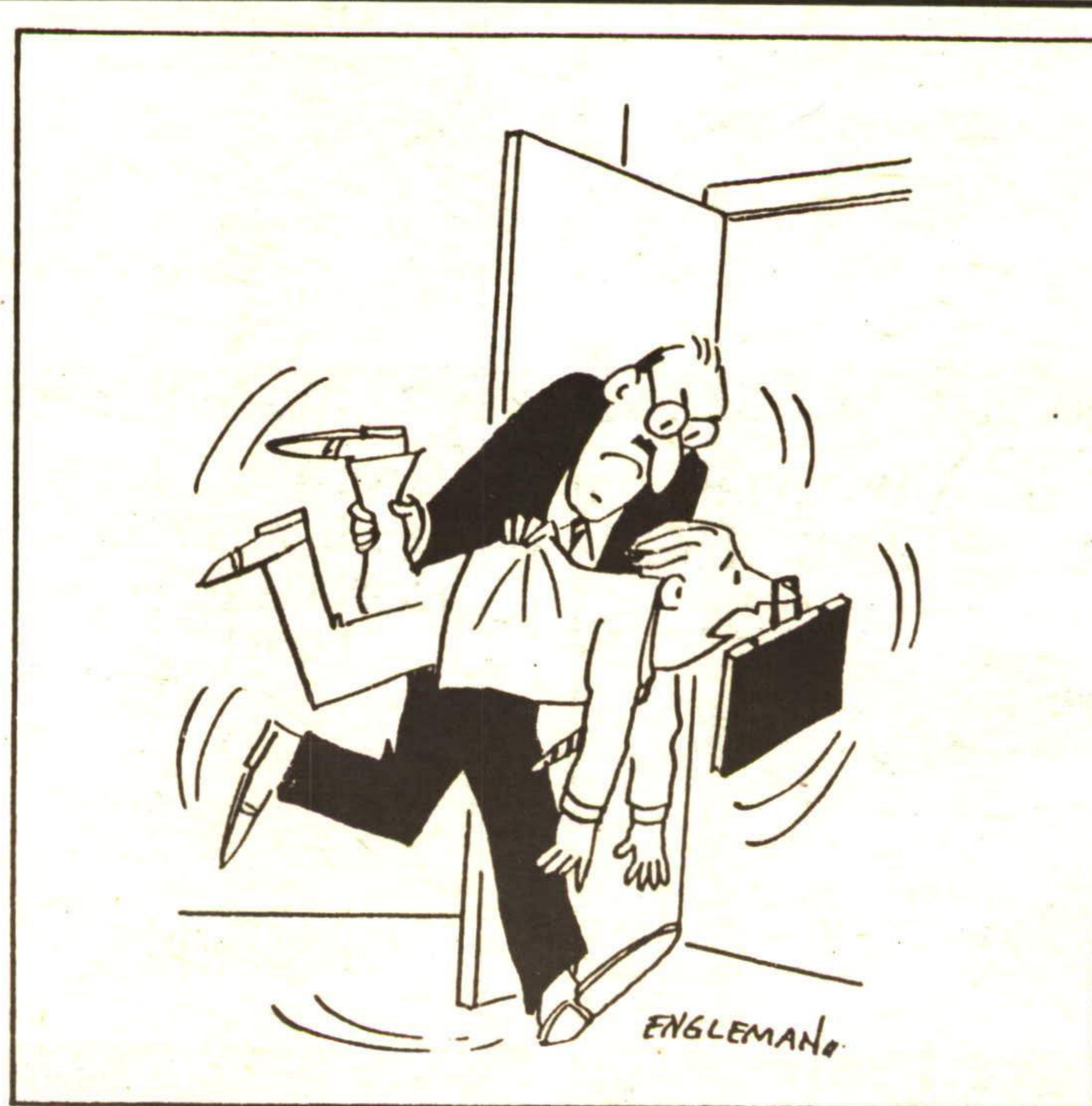
RETIREMENT HOME

Our newly opened retirement facility will continue the tradition of high quality care.

R.R.#2 GUELPH

1-519-856-9447

LOCATED ON BEAUTIFUL SPACIOUS GROUNDS.
Owned & operated by Eden House Nursing Home Ltd.



"I take it you feel you already have enough insurance?"

FOR TRAVEL INFORMATION - GIVE US A CALL

TUI ROOS TRAVEL AGENCY
ASSOCIATE NETWORK

232 GUELPH ST., UNIT 10, GEORGETOWN

873-2000

Each week Christine Cole of Tuitman's Garden Centre and Landscaping, Highway 25, 1 mile south of Acton, 853-2480, will be presenting helpful tips and information to assist you in creating your garden show-place!

**TUITMAN'S
GARDEN CENTRE**

ACTON

853-2480