

# Large turnout celebrated Union Church anniversary

A large congregation enjoyed a beautiful 158 anniversary service at Union Presbyterian church on May 26.

The congregation had asked their own minister Rev. Mary Campbell, to be their special speaker, for this her first anniversary with Union church.

She chose for her Sermon - "How to be a people", with fitting reminders of the past, and for the future, of how to be a people of God.

The regular choir was augmented by friends of the Norval Presbyterian Church Choir. They rendered beautifully the selection "Break Forth into Joy." Guest soloist was Don Madole, who sang two relevant selections, one of which was, "How Lovely are Thy Dwelling."

Many members of the congregation led in prayer. Tina Mid-

## Norval news

By KAY WILSON

dlebrook prayed for "New-born and the Nursery children." Marion Lookman for "Primary children," Rev. Mary Campbell for the "Teens," Terry Leslie for the "Sunday School," John Brydon for "Parents and Partners," Catherine Leslie for "Seniors," Sandy Malcolm for the "Choir," Elsie Dolson for the "Ladies Groups," Bill Ostrander for the "Board of Managers," Bob Rosie for the "Session" and George Rankin for the "Congregation"

As each of these people finished their prayer, they placed a lovely pink rose in a vase, that made a beautiful bouquet. Responsive reading was led by

Lillian Rosie, and the scriptures were read by Elizabeth and Paul Campbell.

Greeting the congregation at the door were Terry Leslie and Herb Dolson. Ushers were Scott Campbell, Bob Rosie, Rein Leslie and David Thompson. Following the service, refreshments and fellowship were enjoyed.

A presentation party was held at the home of Don and Gwen Brander, RR1 Norval, on May 27.

The evening was held in honour of Tracy Whitworth and her husband George Epitropou, now living in Georgetown, who were married earlier this year.

Tracy and her parents Barry and Karen Whitworth, have been a part of the Pinegrove Community for a number of years, now living on the former McGee farm.

In honour of the bridal couple, close neighbours presented them with a set of four oak TV trays.

Attending were Barry and Karen Whitworth, Gertrude McGee, John and Jean Brander, Lou and Linda Ricci, Claude McLaughlin and Spencer and Kay Wilson. Unable to attend were Randy and Helen Ricci, and Gord and Peggy Early.

Following a thank-you from the bridal couple, lunch was served by the hostess and a social time followed.

### Volunteer tutors needed

The North Halton Literacy Guild needs volunteer tutors in the Acton area. We will train you! Please pass the word around. The next workshop is June 4. If interested please call Ave Edington at 873-2200.

## GREEN THUMB GARDENING



By CHRISTINE COLE

## WEIGELAS

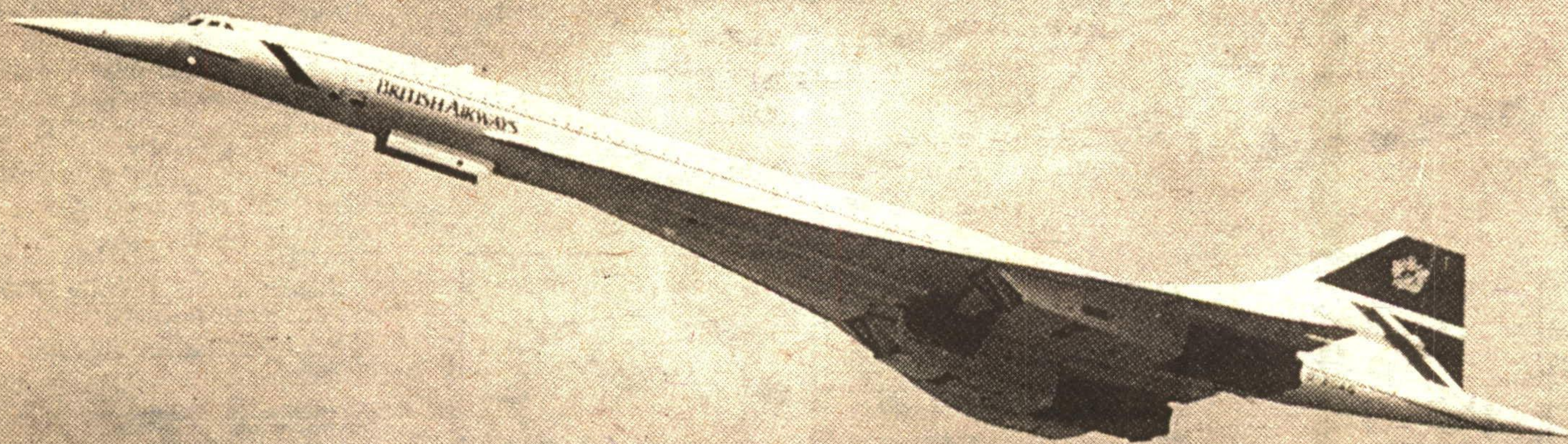
The flowering shrub known as Weigela is about to burst into full bloom at this time of year. The blossoms are usually funnel shaped and more than one inch in length. They can be borne snugly or in clusters. Flowers are in various shades of pink-pale pink (almost white) to deep burgundy wine. Weigelas are prolific bloomers. Some varieties produce so many blooms you can hardly identify the foliage. Throughout the season as new growth develops they continue to bloom but only sporadically.

Most weigela shrubs grow 6 to 9 feet in height at maturity. However, there is a dwarf variety (Minuet Weigela) that grows 2 to 2 1/2 feet tall with all the same flowering qualities as the regular sized shrubs. Their flowers are full-sized (not miniature) and a deep-ruby red color. There is also a variegated weigela with cream and green colored foliage and delightful soft pink flowers. Even when it isn't in flower the two tone foliage provides interesting contrast to other shrubs. It is a compact grower that grows about 4 to 6 feet tall.

All varieties of weigelas are hardy in this region. They all transplant readily from bare root or a container. They will grow in most soil conditions but prefer a well drained soil in full sun. Weigelas are most often used in mixed shrub borders, foundation plantings and as moss plantings.

Each week Christine Cole of Tuitman's Garden Centre and Landscaping, Highway 25, 1 mile south of Acton, 853-2480, will be presenting helpful tips and information to assist you in creating your garden show-place!

# FLYING HIGH



JUST ONE, 1 BEDROOM  
**\$149,900**

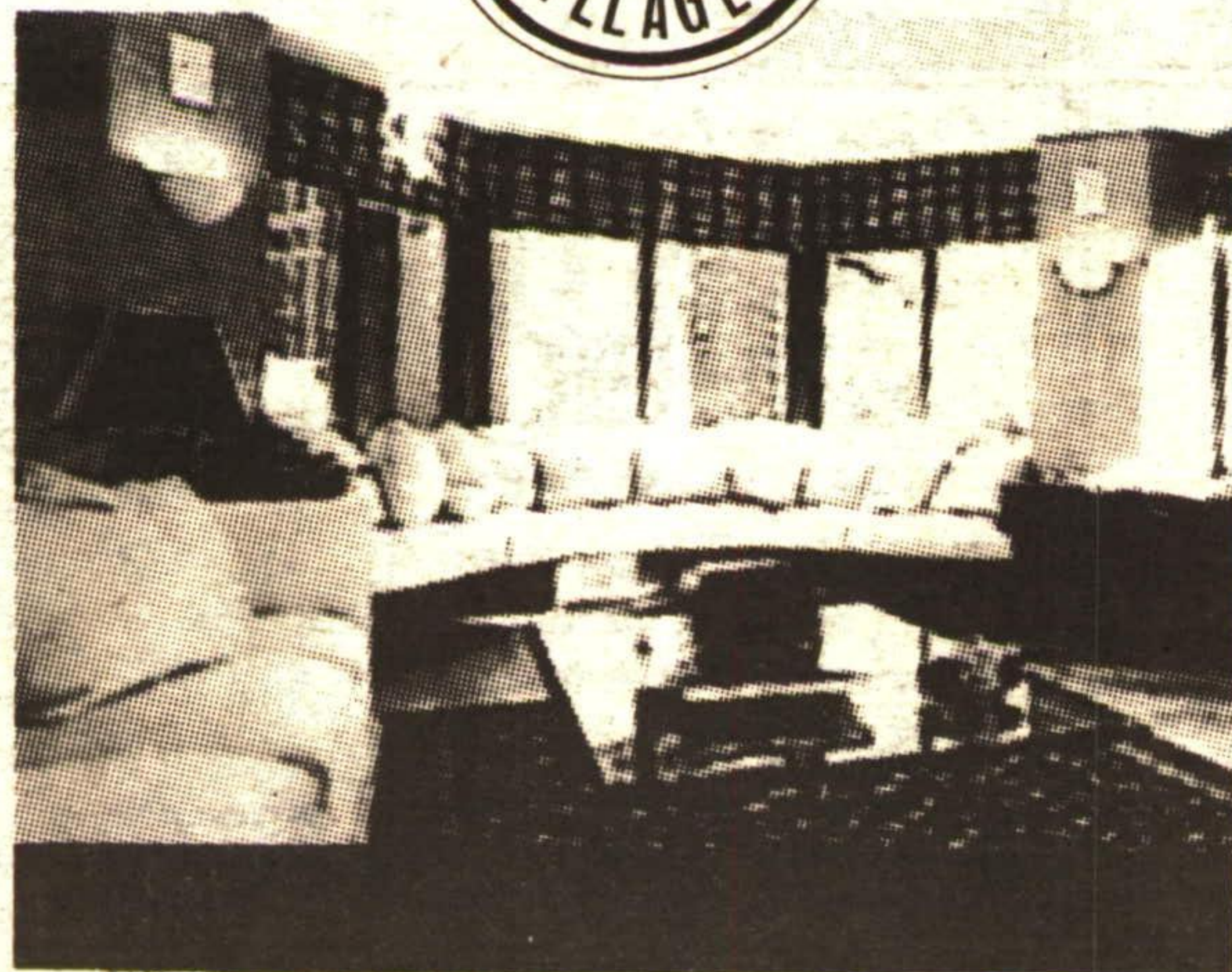
WIN A CONCORDE TRIP FOR 2 TO

ENGLAND

## MODEL SUITES GRAND OPENING

This weekend, visit the fabulously decorated models of Village Parc on The Pond, and you could be the lucky winner of a dream vacation of a lifetime - a Concorde trip to Britain!

Fly high on the Concorde to Britain - the ultimate luxury with absolutely first class service and pampering attention from the inflight British Airways Crew! The dream of jetting to Britain in just under four hours flight time, could be your wish come true by visiting Village Parc on The Pond this weekend!



EARLY SUMMER OCCUPANCY AVAILABLE!

Combined with your choice of no maintenance fees at Village Parc for three years, or 8% two year mortgage financing, makes Village Parc on The Pond your #1 choice in Milton!\*\*

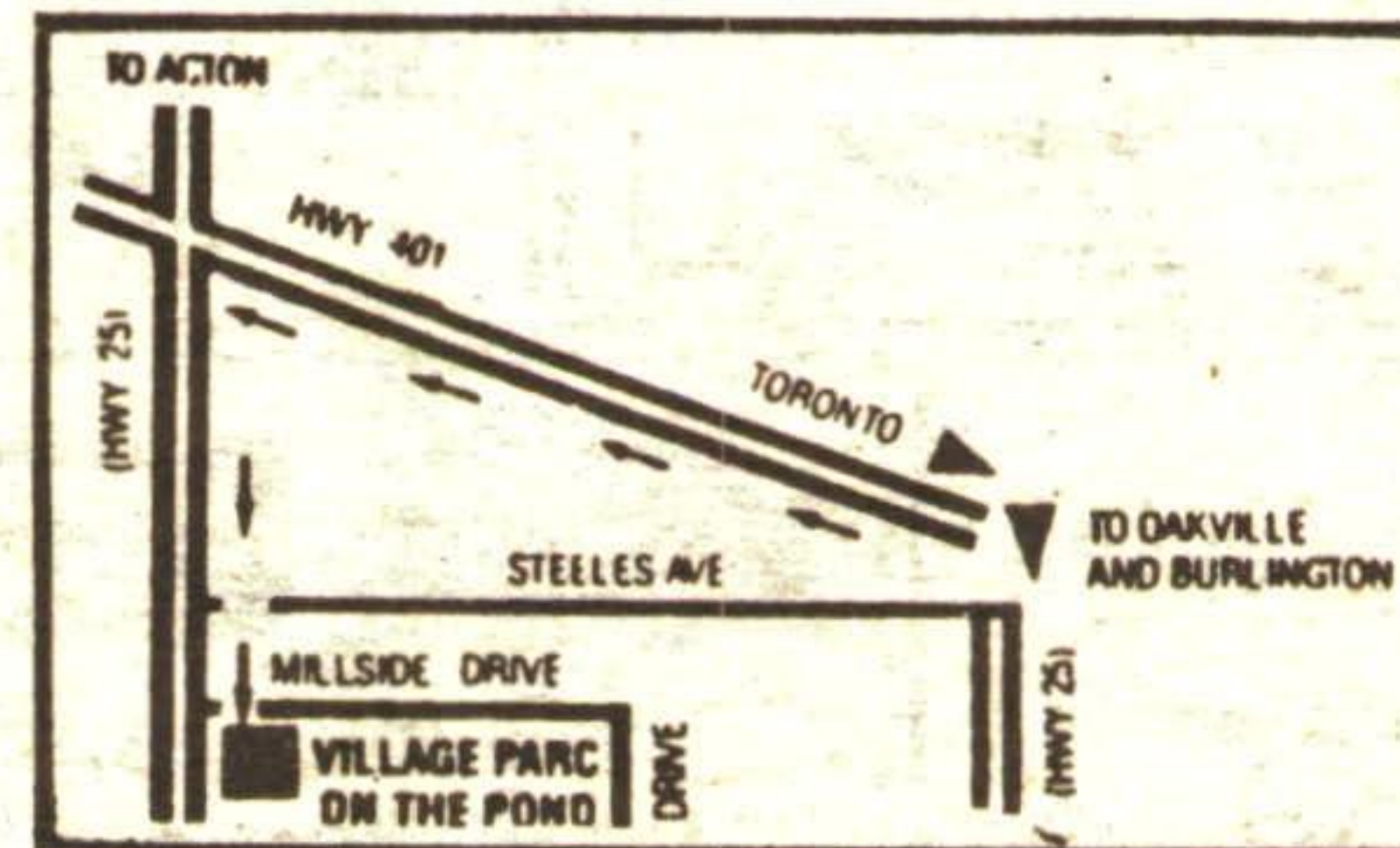
CONTEST OPEN TO MAY 30/91. DRAW TO TAKE PLACE MAY 31/91.

FROM **\$169,900**

2 BEDROOMS, 2 BATHS

SALES OFFICE HOURS  
MON. TO FRI. 12 NOON TO 8PM.  
SAT. AND SUN. 11AM. TO 7PM.

Prices, sizes and specifications subject to change without notice.



MODEL OPENING SPECIAL LIMITED TIME OFFER FOR 2 BEDROOM, 2 BATH			
	SIZE	FLOOR	PRICE
BEN MILLER	1,100 sq. ft.	6	\$197,900 - \$179,900
SHERWOOD	1,225 sq. ft.	6	\$203,900 - \$183,900
SHERWOOD	1,225 sq. ft.	7	\$204,900 - \$184,900
MILLCROFT	1,225 sq. ft.	8	\$205,900 - \$189,900

\*Complete contest details at sales office.  
\*\*Please consult sales representatives for complete details.

Village Parc on THE POND

Bruce Hood Travel

PHONE:  
875-0030 Milton  
360-6441 from Toronto

VISIT WIN VISIT WIN VISIT WIN VISIT WIN VISIT WIN VISIT WIN

TUITMAN'S GARDEN CENTRE ACTON 853-2480