

RE/MAX RE/MAX RE/MAX RE/MAX RE/MAX RE/MAX RE/MAX RE/MAX RE/MAX



DONNA RAE
Sales Rep.

Chances are,
RE/MAX is
going to sell
your home

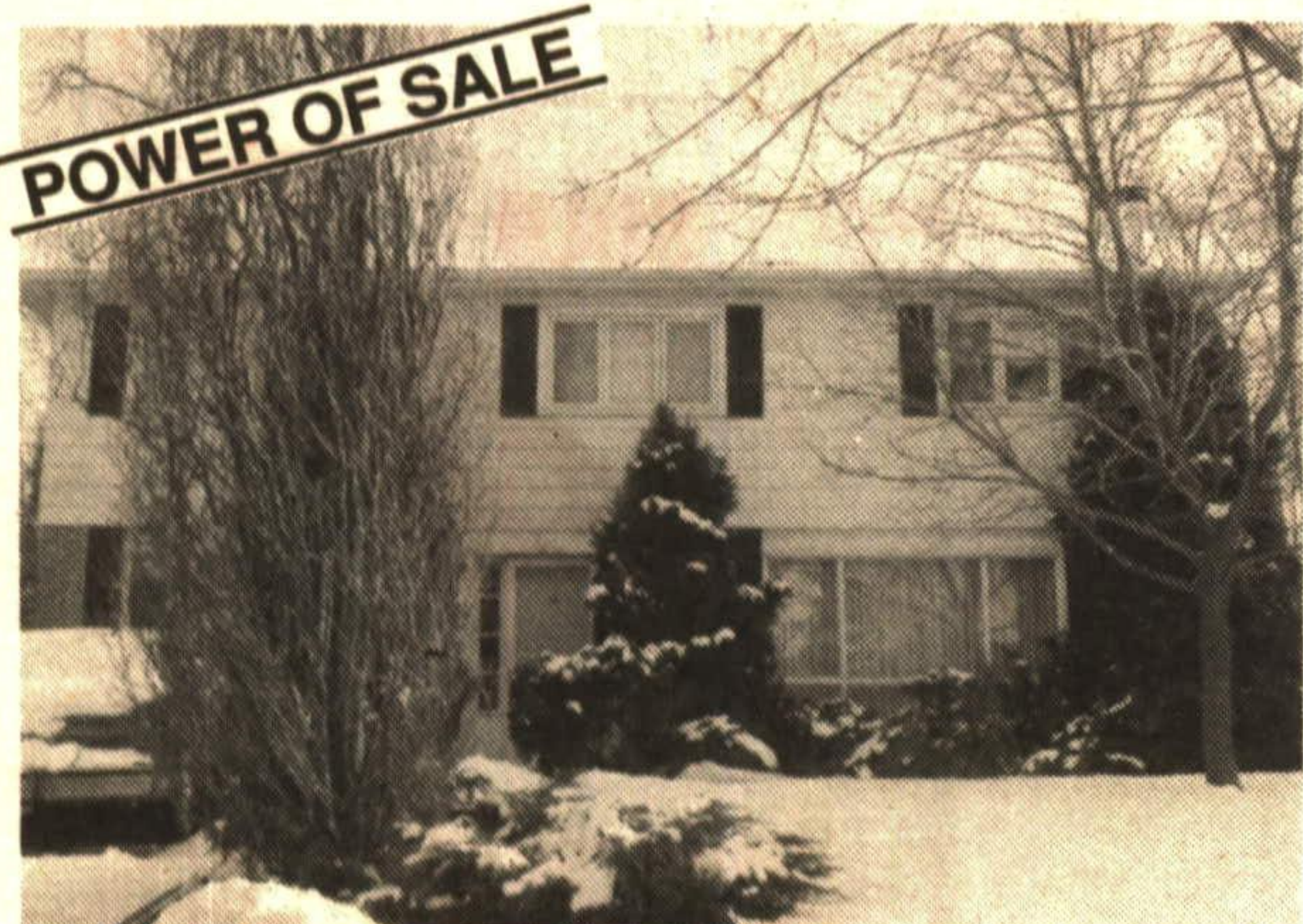


Why not
call
us
first?



RE/MAX
SUBURBAN
(91) INC.

Bus. (416) 877-5211
Tor. (416) 457-1752
Erin (519) 833-7117



GREAT BUY
\$219,000
That's right. Don't miss this one. 4 bedroom, 2 storey home on ravine lot. Custom kitchen. Finished rec room with fireplace. Call QUICKLY Donna Rae, Sales Representative at 877-5211. RM044-91



MASSIVE VICTORIAN
Totally restored but with original wood trim. Gorgeous doesn't even begin to describe this 5 bedroom, 3 full bathroom home. Fantastic Gothic trim, 4+ acres. Call Donna Rae, Sales Rep. at 877-5211 or 873-1058 Res. RM096-90

I HAVE CASH BUYERS JUST WAITING FOR BUNGALOWS AND BACKSPLITS.
If you are thinking about moving and need professional assistance, please call!

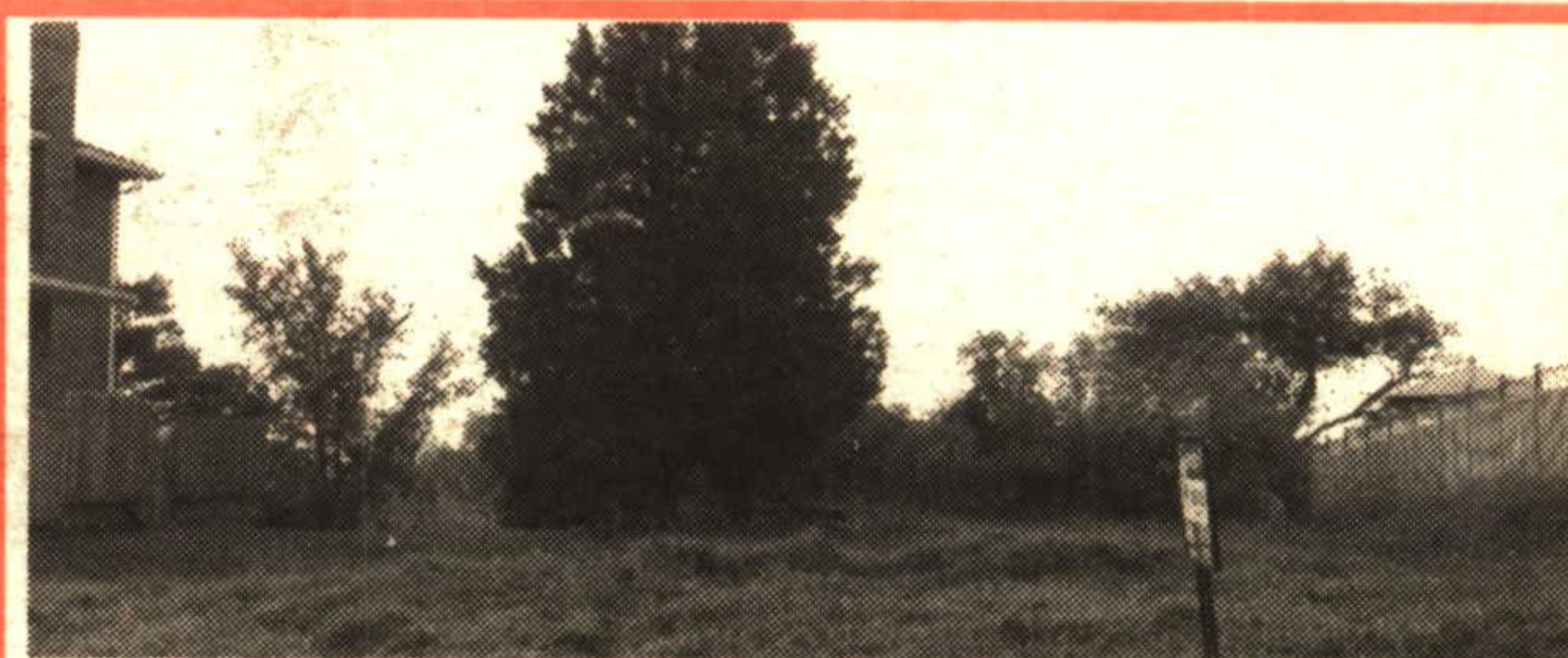
Donna Rae

Sales Representative

Res. 873-1058 Bus. 877-5211



Trafalgar Road location on 2 acres. Lovely bungalow with separate coach house. Call Donna Rae, Sales Representative. RM150-90



DREAM ON

To build your dream home on this ravine property on an executive lot in town. Spring is here so don't hesitate. Once interest rates go down prices go up, so hurry, hurry on this excellent lot. Call Donna Rae, Sales Representative 877-5211, Res. 873-1058. RM153-90

RE/MAX RE/MAX RE/MAX RE/MAX RE/MAX RE/MAX RE/MAX RE/MAX RE/MAX

COUNTRYWIDE COUNTRYWIDE COUNTRYWIDE COUNTRYWIDE COUNTRYWIDE COUNTRYWIDE COUNTRYWIDE COUNTRYWIDE

WELCOME TO

17 College Street, Georgetown

Call Yvan Desjardins for an appointment to visit! **\$209,000**

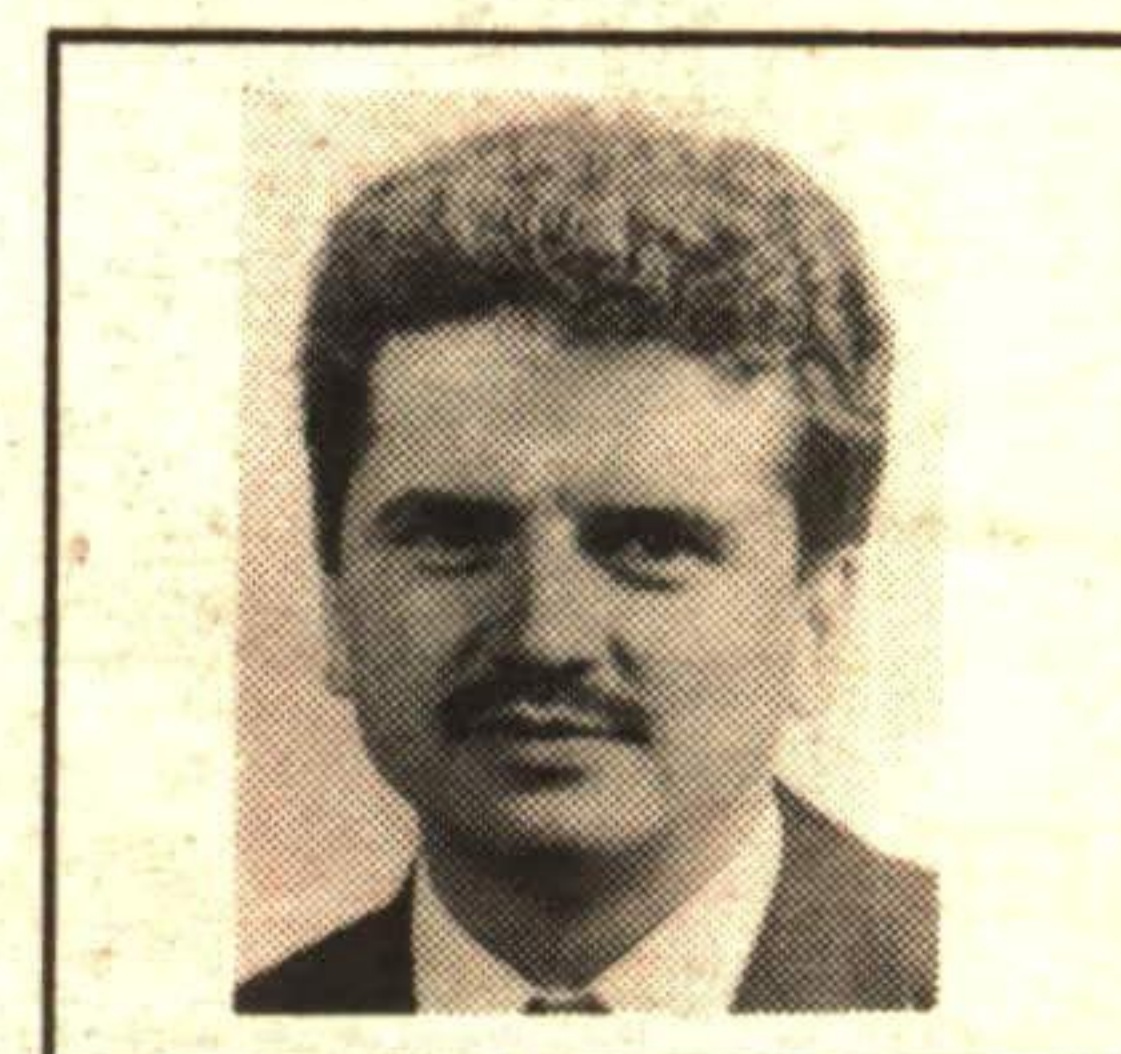


Yvan Desjardins,
Sales Rep.*

Res. 873-2618

Bus. 873-3377

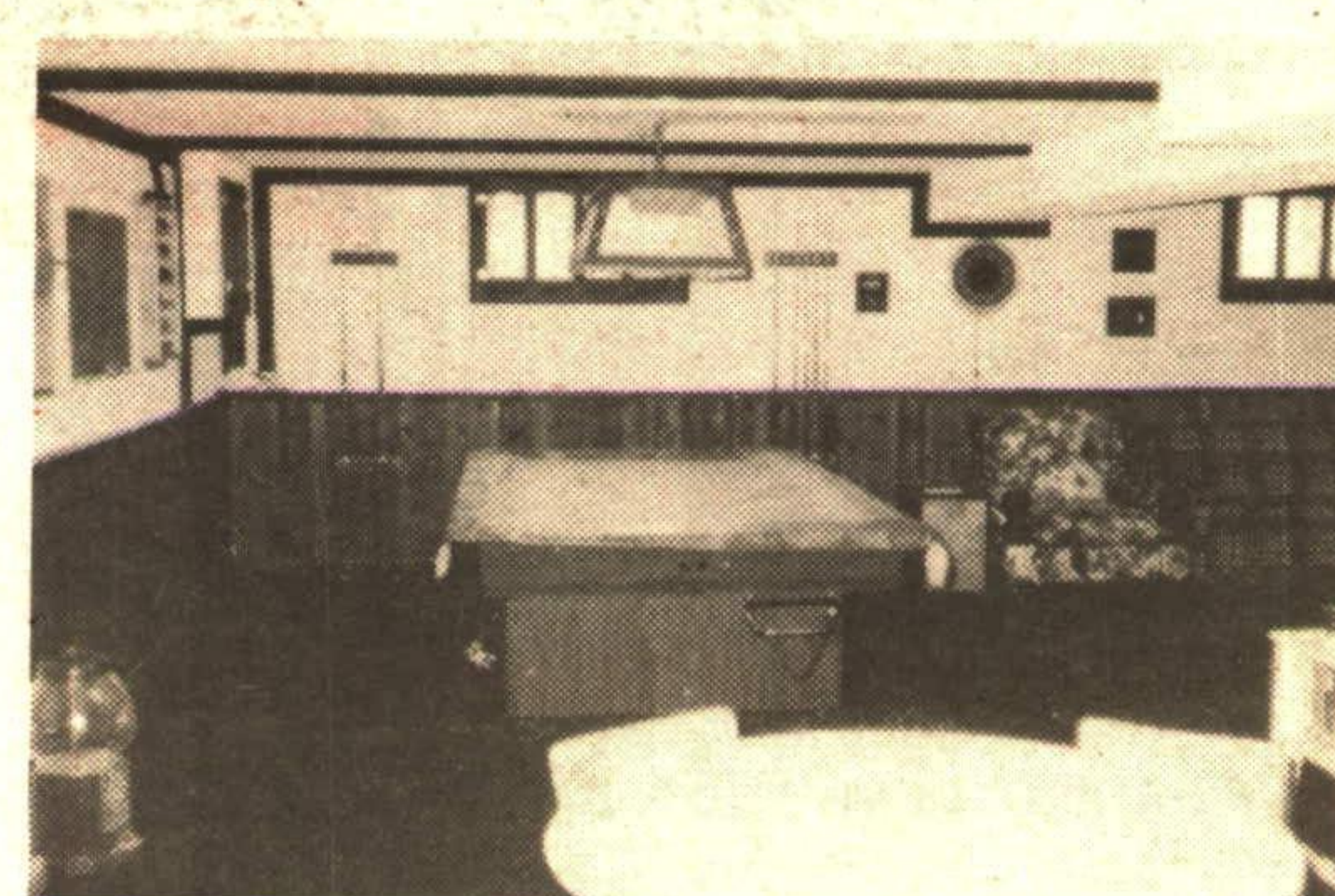
on pager



3 bedroom bungalow. Treated wood deck, fenced, central air, central vac and more.



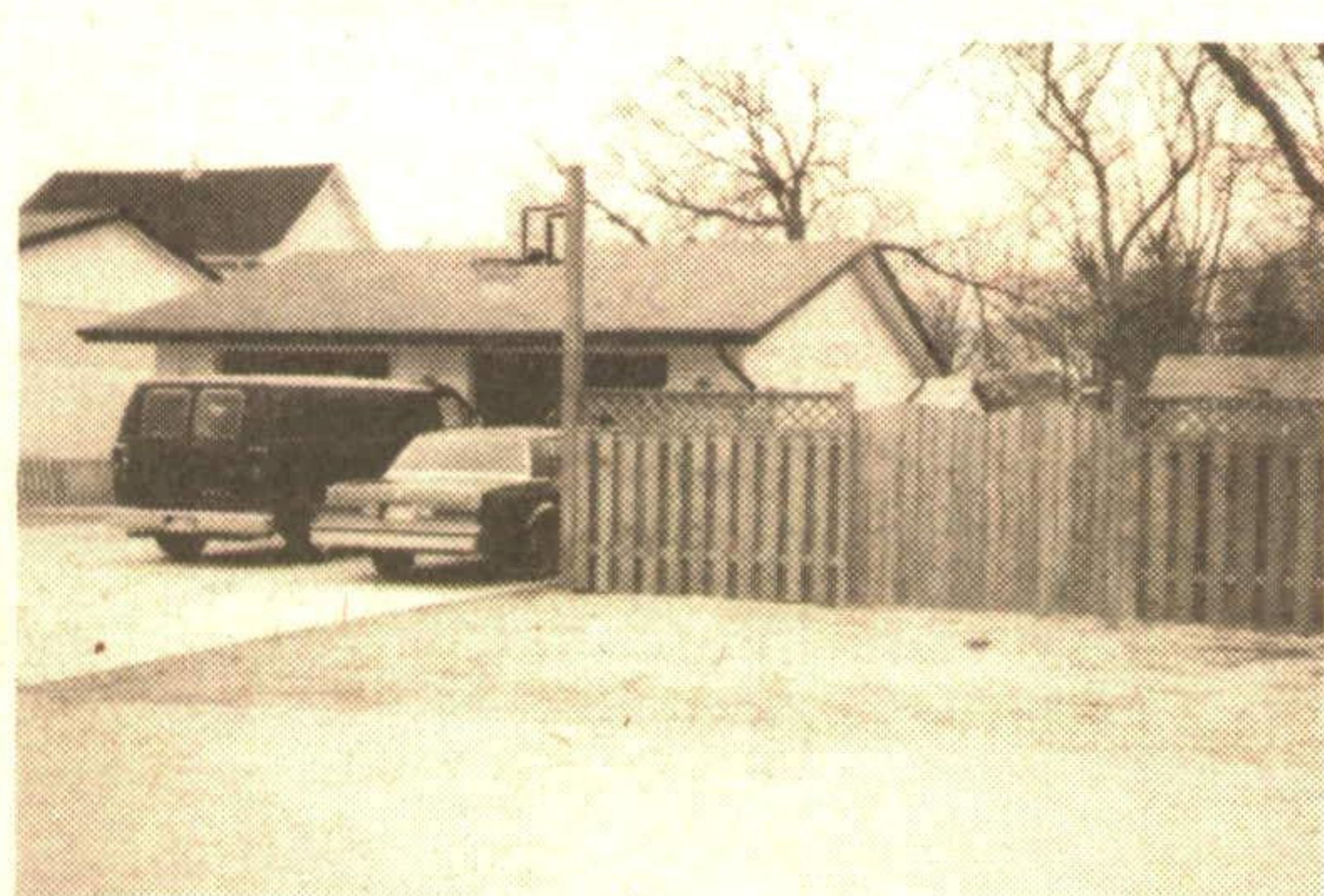
Professionally finished L-shaped rec room . . . you will be proud to entertain.



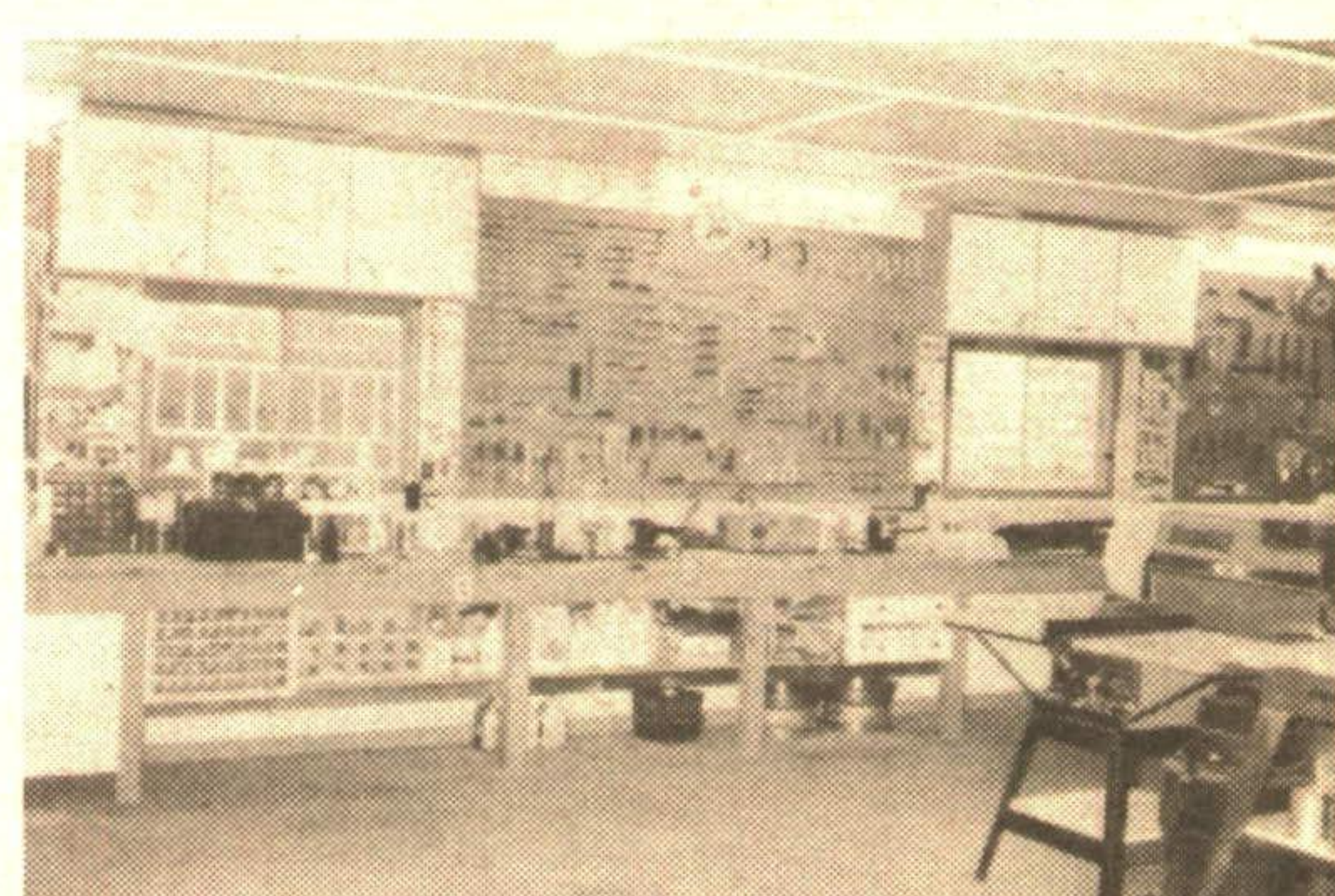
Has room for pool table or ping pong table, fully carpeted, nice and cosy.



Stunning workshop 27' x 28', totally finished, eaves, fascia, concrete drive 6" thick for 6 cars.



Beside the shop a side yard, fully fenced, 25' x 55' with doors, plus an extra storage shed.



Inside the workshop is a forced air furnace, floor drain, extra cupboards, hot and cold water lines and more.

COUNTRYWIDE COUNTRYWIDE COUNTRYWIDE COUNTRYWIDE COUNTRYWIDE COUNTRYWIDE COUNTRYWIDE COUNTRYWIDE