

Kevin Callan gives local student an A for essay on dump/quarry proposal

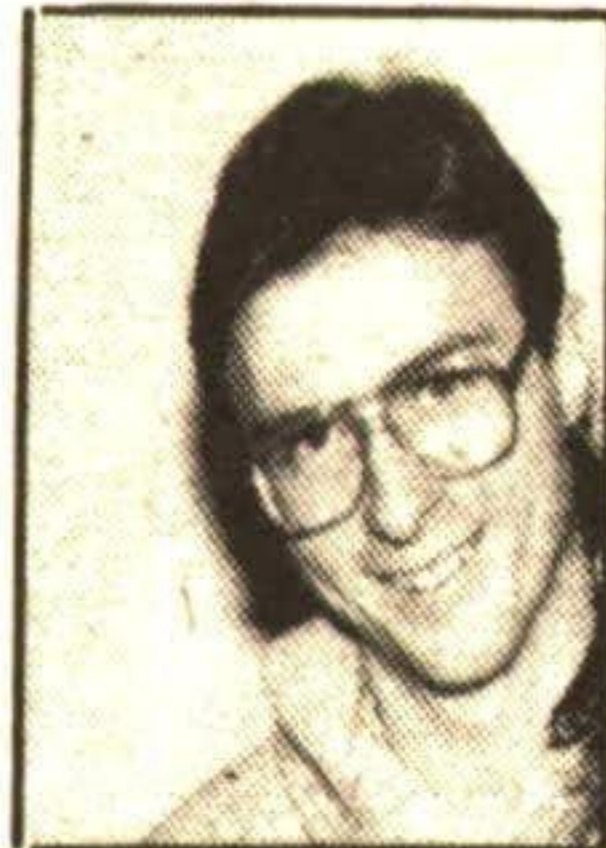
During the last few nights I've burned the midnight oil marking my Environmental Issues students' term papers, with topics ranging from veal farming to environmental contemporary music. One paper in particular I pulled from the pile was titled, "The Acton Quarry as a Proposed Landfill Site" by Jennifer Kingston from Georgetown.

Just to be different I've decided to give you a rest from my pen and decided to let Jennifer state her views on the Acton quarry project to the people of Halton.

The following is the conclusion of her term paper, after looking at both sides (Reclamation Systems Inc. vs. Niagara Escarpment Commission). By the way, I gave her an A.

CONCLUSION

The Acton Quarry proposal as a solid waste landfill site is an environmental issue that has been debated for over three years. Many groups in the surrounding communities are against RSI's proposal and have presented information indicating serious environmental impacts with the hope of preventing this plan from going



Nature's Way

By
KEVIN CALLAN

through. Communities are not convinced that the Acton Quarry can be engineered successfully to provide landfill capacity. One mistake could contaminate the entire water supply. This would be devastating to the communities in the region of Halton Hills.

But the need for landfill in Ontario is serious. It can't be ignored. Where is this waste supposed to go so that it doesn't contaminate the surrounding area? Hopefully this issue will be a lesson to us all that we need to cut down on the amount of garbage we produce. Otherwise, this need for waste capacity will only grow.

The role of geological technicians is to provide data about various geological conditions in order for engineers to produce reports and continue further research. A corporation such as

Reclamation Systems Inc. works with engineering firms in order to produce concise, technical reports that supports proposals. The issue of the proposed landfill site in the Acton Quarry indicates a difference of opinions among engineers as well as the technicians who work for them. One ethical conflict in becoming a geological technician is searching for an engineering firm that is concerned with the safety of the environment. There would be great difficulty providing data on geological conditions in support of a corporation that may be damaging the environment, especially when it is an issue that you are strongly against.

The residents of Ontario should be made aware that a solid waste landfill site has been proposed in a Biosphere Reserve known as the Niagara Escarpment. This environmental issue should be opened to all of Ontario instead of just the communities that feel threatened by it. Damage to the Niagara Escarpment is a threat to all those who benefit from it and the residents of Ontario should be acting to preserve such a valuable resource.

Ways of the Woods is back!

Children, ages 8-12, can participate in another adventure-filled summer at the Ways of the Woods day camp, sponsored by the Halton Region Conservation Authority.

From July 1 to August 23, participants can choose a one-week or two-week program of swimming, caving, Indian crafts, songs and dance, archaeology, or exploring the natural world of insects, owls, mammals, ponds and streams. There is one overnight camp during the first week of a two-week session. Transportation is provided to and

from the park to Halton residents. Participants visit Kelso, Rattlesnake Point, Mount Nemo and Crawford Lake as well as Mountsberg Wildlife Centre, which is the base camp.

The cost is \$80/week/child; second child is \$75/week.

Registration forms are available from Halton Libraries in Acton, Georgetown, Oakville and Burlington, plus Information Burlington, Oakville, Flamborough and Milton as well as the Milton and Oakville Chamber of Commerces. Further information is available from the Halton

Region Conservation Authority (336-1158) or the Mountsberg Wildlife Centre (854-2276).

Bob Morrow & Sons Carpentry Ltd.

- CUSTOM KITCHEN CABINETS
- BATHROOM CABINETS & CERAMICS
- CUSTOM WOODWORKING
- WINDOWS & DOOR INSTALLATIONS
- DECKS, REC ROOMS
- ALL PHASES OF CARPENTRY
- COMPLETE WOODWORKING SHOP

Phone 873-0690

877-0413

877-8796

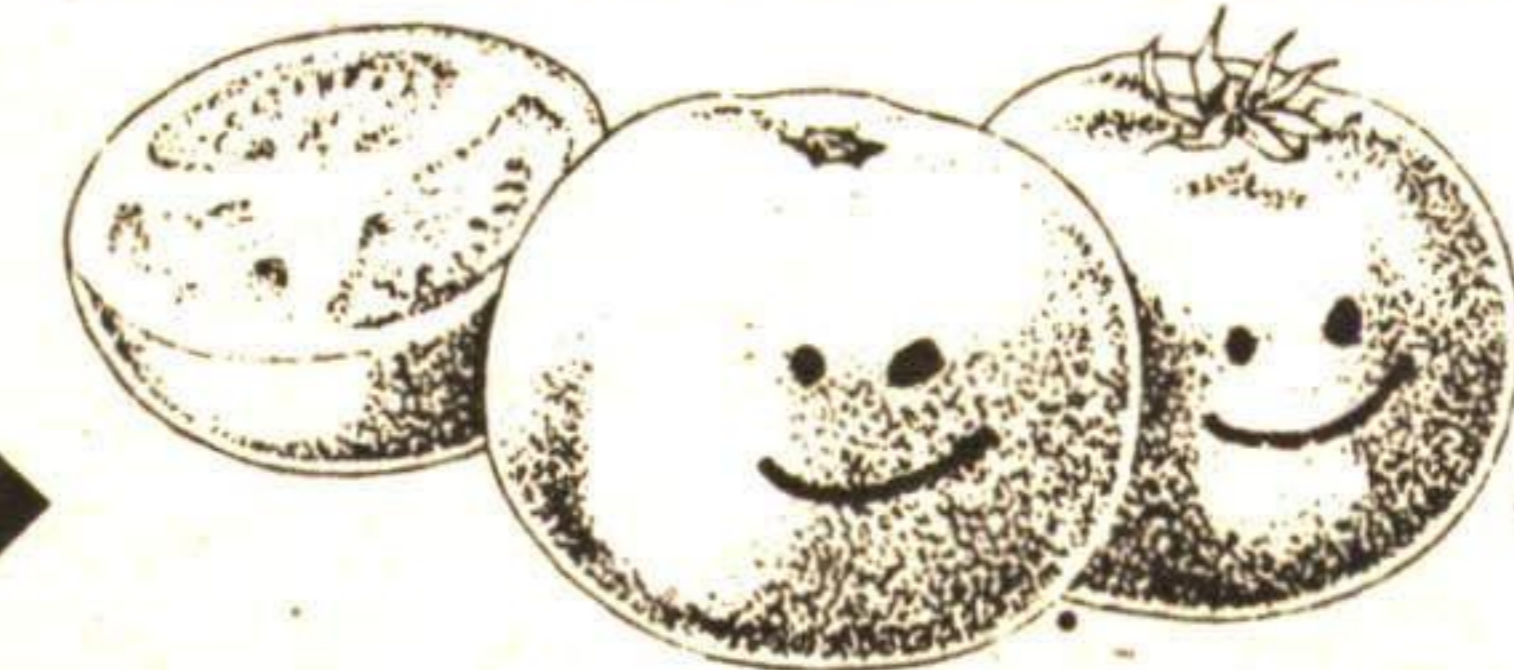
Halton Hills

License

#20388

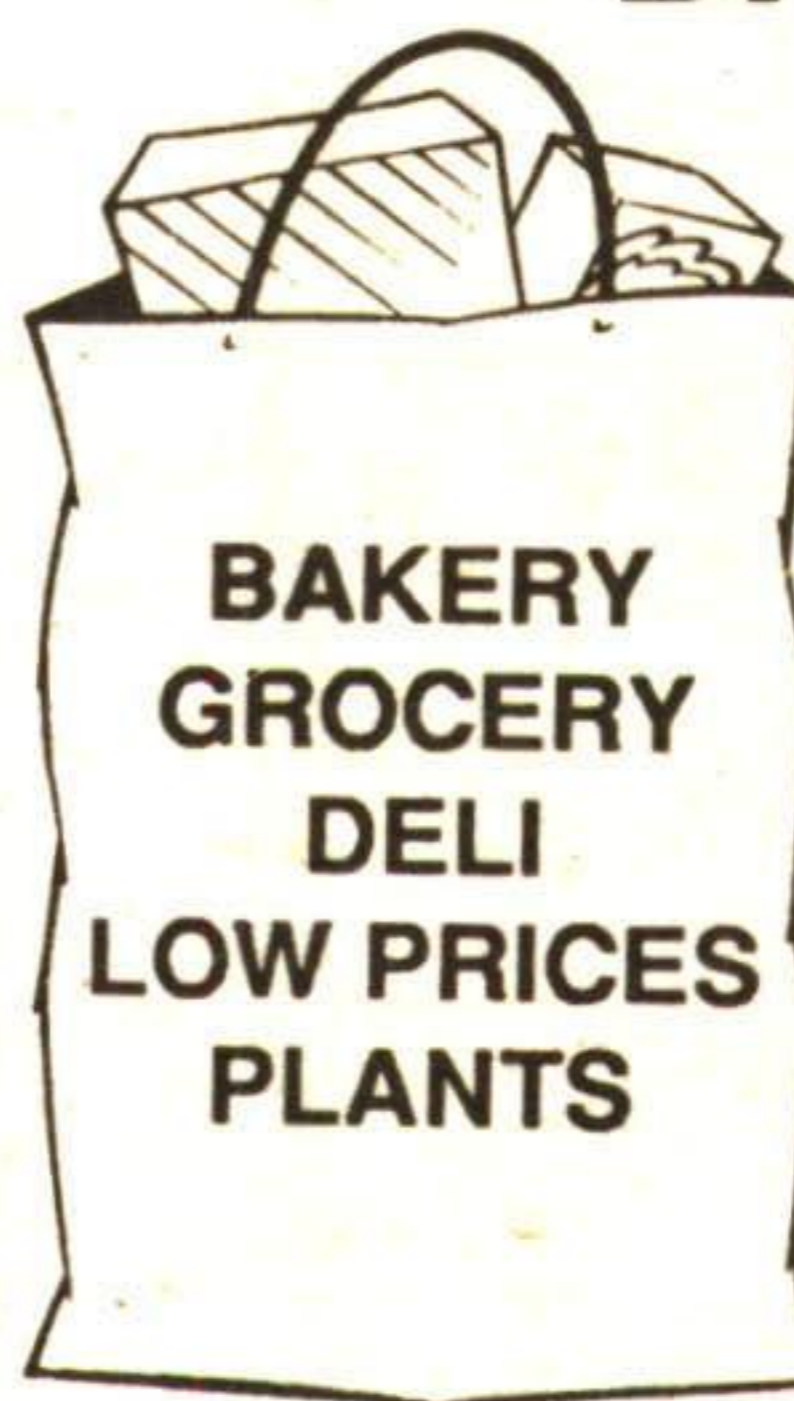
THE GREENHOUSE - TOMATOES

No Fungicide



No Pesticide

**DROP IN AND DISCOVER
VALUES IN BLOOM -
ALL YEAR ROUND**



BAKERY
GROCERY
DELI
LOW PRICES
PLANTS

COUNTRYMARKET - THE GREENHOUSE

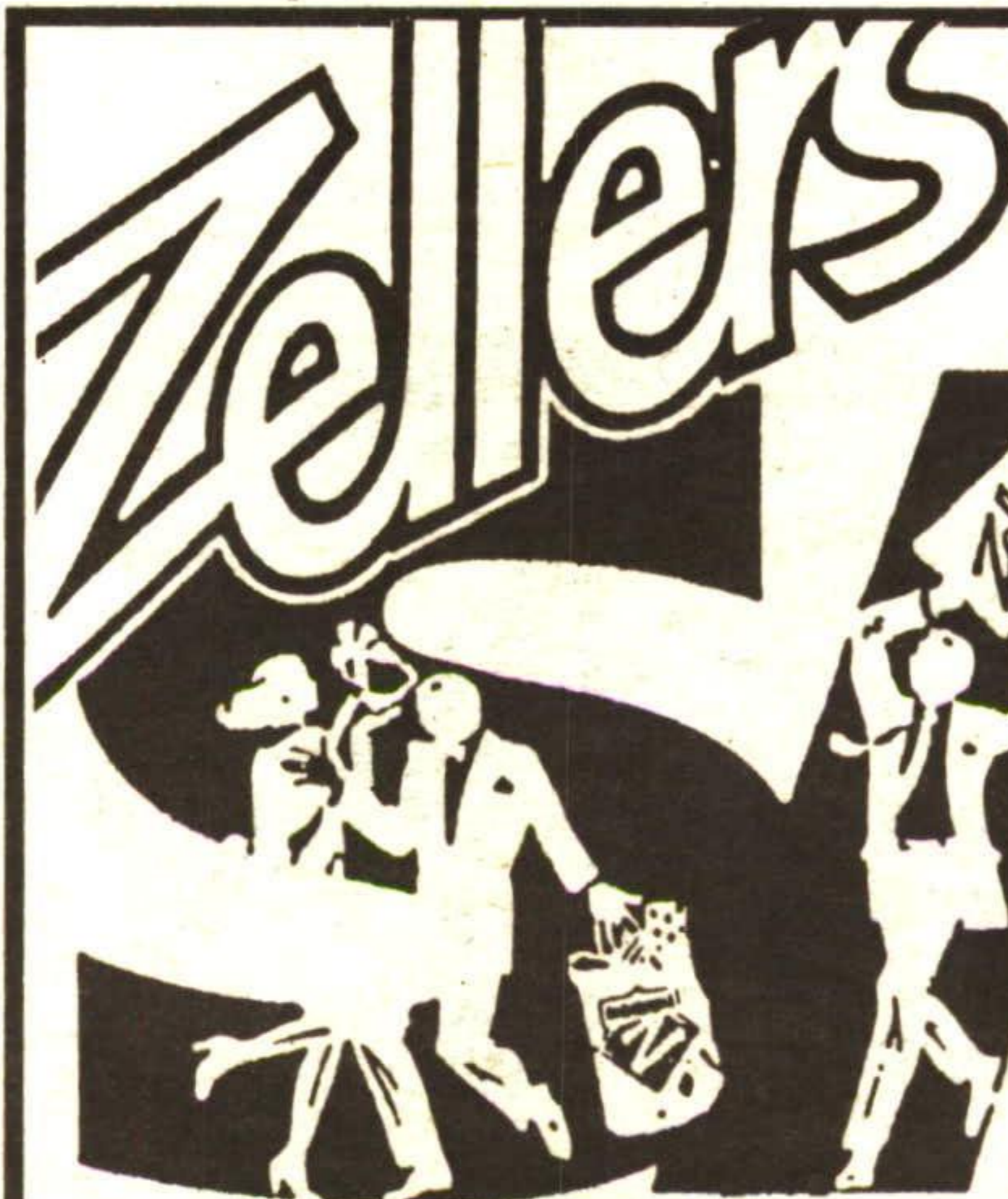
Winston Churchill Blvd.
1/2 mile North of Steeles

Open 7 Days A Week

Senior Discount 10%

Mon., Tues., Wed.

416-454-5389



MONDAY & TUESDAY EASTER

ONLY ONE STORE HAS BRANDNAME VALUES AND CLUB Z POINTS!

MILK CHOCOLATE BUNNY

WITH FRUIT AND NUTS

400gr

2⁴⁹

Reg. *3.49

FRAMED PRINTS

LIMITED EDITION
MATTED WOOD FRAME
16 x 20

16⁹⁷

Reg. \$19.97

BBQ TANK

20 LB. PROPANE TANK

17⁹⁷

Our Everyday Low Price

CHAMPION VEGETABLE GARDEN SEEDS

5 FOR 1⁰⁰

Reg. 29¢ each

PRICES IN EFFECT MARCH 25th-26th ONLY

Because... the lowest price is the law!

Georgetown Marketplace

Mon. to Fri. 10 a.m. to 9 p.m.

Sat. 9 a.m. to 9 p.m.



Your Week Ahead Horoscope

- ARIES**
Mar. 21-Apr. 19
Take the time to investigate your insurance policies. Be more organized. Seek help from a friend who can give you good advice.
- TAURUS**
Apr. 20-May 20
A business trip may be in the offing. Use it to its full advantage. Set new goals, both at home and at work. Romance may be headed for disaster.
- GEMINI**
May 21-June 20
Use your common sense in sorting out those problems that have been nagging at your conscience. Originality counts at work.
- CANCER**
June 21-July 22
Your loved one has an unexpected surprise. Be generous. Business associates show more cooperation than in the past.
- LEO**
July 23-Aug. 22
Hang on to your self confidence, it will be sorely tested. Teamwork is the best solution to your problems at work. Rely on it.
- VIRGO**
Aug. 23-Sept. 22
Trouble at home may be avoided by diplomacy. A relative is in desperate need of attention and you are cornered into filling that need. Exercise caution.
- LIBRA**
Sept. 23-Oct. 22
This is a good time to catch up on correspondence. Someone is waiting to hear from you. Get involved in a philanthropic endeavor.
- SCORPIO**
Oct. 23-Nov. 21
Be prepared to speak your mind to those in authority. Your honesty will be rewarded. More demands are made on your time. Be fair.
- SAGITTARIUS**
Nov. 22-Dec. 21
A positive attitude will get you through major changes at home. Financial speculation will net big rewards.
- CAPRICORN**
Dec. 22-Jan. 19
Budget problems cause considerable changes in performance of those you work with; volunteer to undertake more responsibilities.
- AQUARIUS**
Jan. 20-Feb. 18
Young people play an important role in your life and expect your consideration and respect. Don't disappoint them.
- PISCES**
Feb. 19-Mar. 20
Major purchases are due at this time. Discuss them thoroughly with your spouse and be considerate of his/her opinion.



ANNE GENOE

Countrywide

ALL PRO REALTY INC.
328 Guelph Street
Georgetown, Ontario L7G 4B5
Tel: (416) 873-3377

All trademarks, logos and slogans are the property of Countrywide Real Estate Group Inc. Each Countrywide office is independently owned and operated. Not intended to solicit properties currently listed for sale.