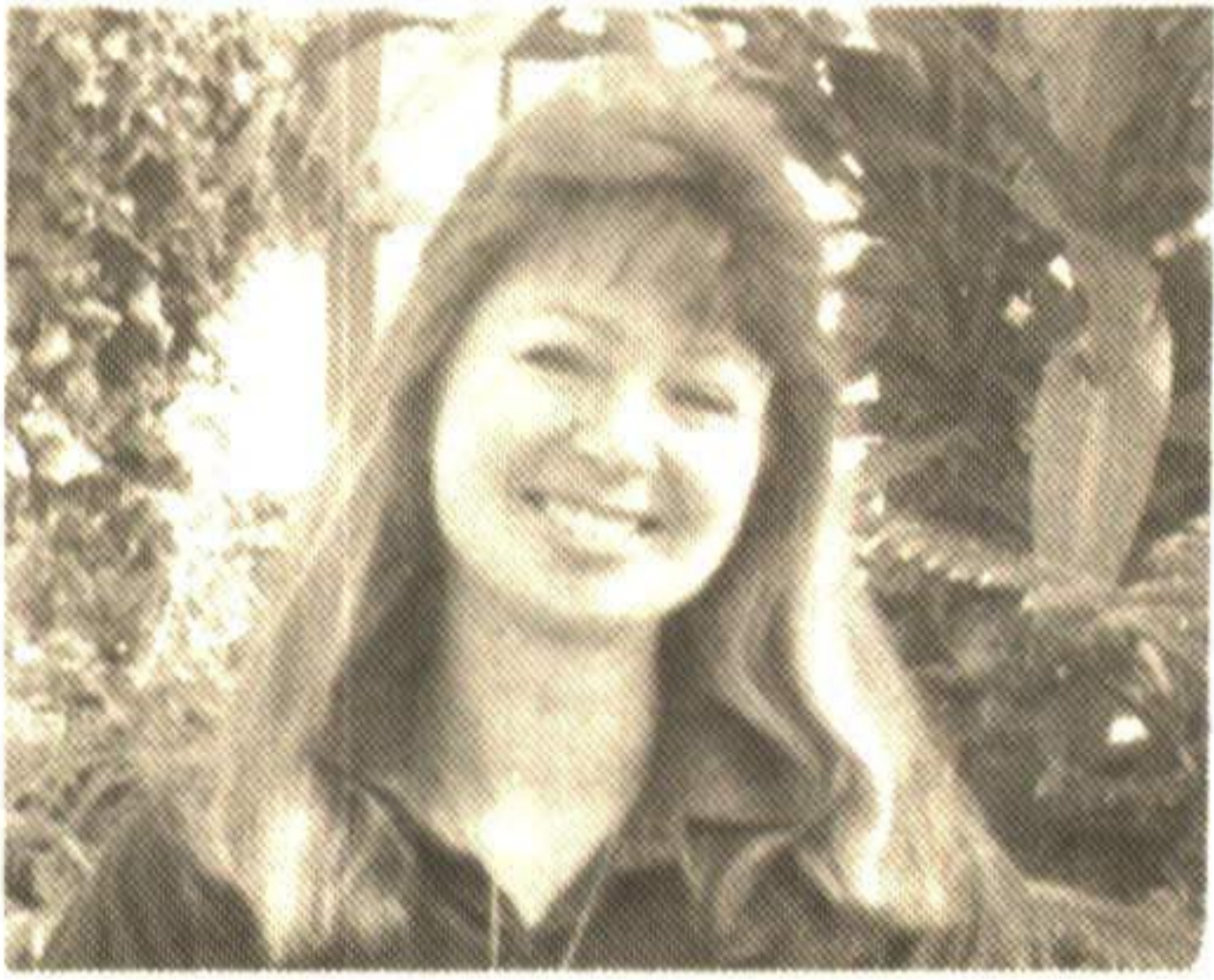


## GREEN THUMB GARDENING



By CHRISTINE COLE

## GROWING YOUR OWN FRUIT

Why not let your garden grow more for you? You can easily grow your own fruit (and eat it too!) To grow fruit trees in your yard you do not have to be a professional orchardist. Extensive fertilizer, spraying and maintenance programs are not necessary to produce an abundant crop. The availability of dwarf and semi-dwarf trees makes it possible to have fruit trees on smaller lots.

Apples, Pears, Plums are hardy in this region. However, peaches and cherries can be marginal to half-hardy. Winter injury and late frost damage restrict their growth to protected sites in your yard. This does not mean that they can not be successfully grown here but that their planting location should be carefully planned. Tart cherries tend to be much harder than their sweet cherry counterpart.

Occasionally there is some confusion surrounding the subject of pollination of fruit trees. (Pollination involves the transfer or pollen which fertilizes the flower and results in the development of fruit). Most Apples, Pears, Plums and Cherries are self-sterile. This means that the pollen from a tree can not fertilize itself. To produce fruit on these trees you must have two different varieties planted. For example: you could plant a MacIntosh and a Spartan apple tree to pollinate each other and produce fruit but you could not produce fruit from two MacIntosh apple trees. Most Plum trees are also self-sterile but Italian Prune Plum and Reine Claude are two varieties that are self-fertile. Self-fertile fruit trees are able to produce fruit from their own pollen. Besides the two plum varieties mentioned Tart Cherries and most peaches are self-fertile. Therefore you only have to plant one tree to produce fruit.

Besides the compatibility of pollen, there is other factors that are important for fruit set. Without bees there would be very little fruit produced. Fruit trees are generally not pollinated by the wind. Bees are the major insects that transfer pollen from flower to flower. Poor, wet weather during the flowering period can decrease their movement. Most insecticides are fatal to bees, therefore fruit trees should not be sprayed when bees are visiting them. A late frost at the flowering stage can damage the flowers so that they can not be fertilized.

Each week Christine Cole of Tuitman's Garden Centre and Landscaping, Highway 25, 1 mile south of Acton, 853-2480, will be presenting helpful tips and information to assist you in creating your garden show-place!

## TUITMAN'S GARDEN CENTRE

ACTON  
853-2480

## Kindergarten sign-up

If you have a child who will be 5 years old by Dec. 31 1991 then now is the time to take the first step to the future, Kindergarten Registration. Registration has already started and we encourage you to register by Mar. 30. For information call your local school principal or the Education Centre in your area.

### The Newfie Store

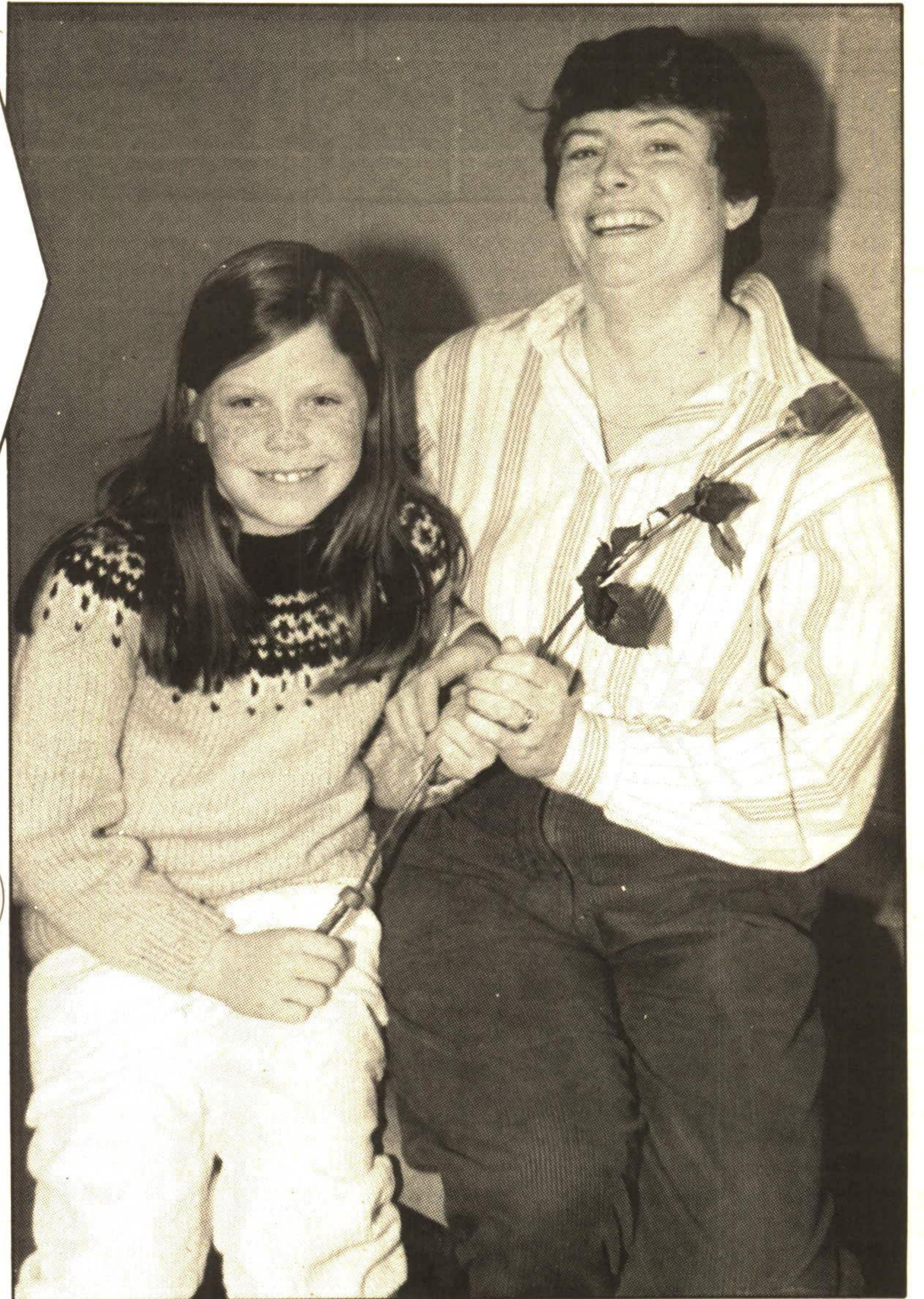
We specialize in: • Fresh Fish  
• Live Lobster • Maritime Products

MOORE PARK PLAZA  
74C Main St. N., Georgetown  
(416) 873-6122

## A ROSE FOR TEACHER





In a surprise assembly at Harrison School, Grade 3 teacher Linda Howatt received a rose from her student Amy Smuck, as did all 22 teachers at the school. Organized by parents and principal Max Jackson, the teachers thought they were attending an assembly to release a red-tailed hawk in an environmental studies unit. Instead, they received roses.

TED BROWN Halton Hills Weekend.



## Introducing kid's-sized combos at kid's-sized prices!

# KID'S MENU

	<b>Hamburglar® Combo</b>	HAMBURGER REGULAR FRIES REGULAR SOFT DRINK	\$1.99
	<b>Grimace® Combo</b>	CHEESEBURGER REGULAR FRIES REGULAR SOFT DRINK	\$2.19
	<b>Ronald Combo</b>	KID'S MAC™ REGULAR FRIES REGULAR SOFT DRINK	\$2.39
	<b>McNugget Buddies Combo</b>	4 CHICKEN McNUGGETS REGULAR FRIES REGULAR SOFT DRINK	\$2.89

## McDonald's new Kid's Menu is here.

For children 12 years & under at participating McDonald's.



185 GUELPH ST.  
GEORGETOWN

## Your Week Ahead Horoscope

- ARIES**  
Mar. 21-Apr. 19  
Be cautious; don't jump on the bandwagon without giving considerable thought to the consequences.
- TAURUS**  
Apr. 20-May 20  
Your creativity blossoms. Help someone you love with a long standing problem. Travel is not good at this time.
- GEMINI**  
May 21-June 20  
Romance gets a second chance; don't pass it up or you will regret it later. Strengthen your body with vigorous exercise.
- CANCER**  
June 21-July 22  
Business associates will be impressed with your genius; however don't go overboard. Subtly is the key.
- LEO**  
July 23-Aug. 22  
Be prepared to take a loss in both finances and romance. Nothing good lasts forever. Time heals all wounds.
- VIRGO**  
Aug. 23-Sept. 22  
Knowledge is the key to success; take the opportunities offered to increase yours. More freedom will be the result.
- LIBRA**  
Sept. 23-Oct. 22  
Tone down your activities. An overloaded schedule will lead to a stressful situation. Curl up with someone special.
- SCORPIO**  
Oct. 23-Nov. 21  
A thorough cleansing of the spirit as well as the home is in order. Throw out those things that are cluttering up your psyche and causing problems.
- SAGITTARIUS**  
Nov. 22-Dec. 21  
A broken relationship can be mended. Family members need your support now; don't turn your back on them.
- CAPRICORN**  
Dec. 22-Jan. 19  
Someone looks up to you for guidance; they have confidence in you so you have confidence in yourself.
- AQUARIUS**  
Jan. 20-Feb. 18  
Bad habits need to be broken for health reasons. Going back school at this time would be an excellent decision.
- PISCES**  
Feb. 19-Mar. 20  
Don't procrastinate. Those in supervisory positions will notice and be impressed. Spending money at this time is unwise.



ANNE GENOE

# RE/MAX

MILTOWNE REALTY CORP.

An Independent Member Broker  
(519) 853-2086 Res. 853-1505  
Tor. Line (416) 454-9101

## DENTURES

FULL DENTURE SERVICES DIRECTLY TO THE PUBLIC

- New Dentures • Relines
- Repairs • Cleaning
- \*Dental Insurance accepted
- \* Wheelchair Accessibility

A.W. TRENTON, D.T.

Denture Therapy Clinic

18 Church St.

Georgetown, Ontario

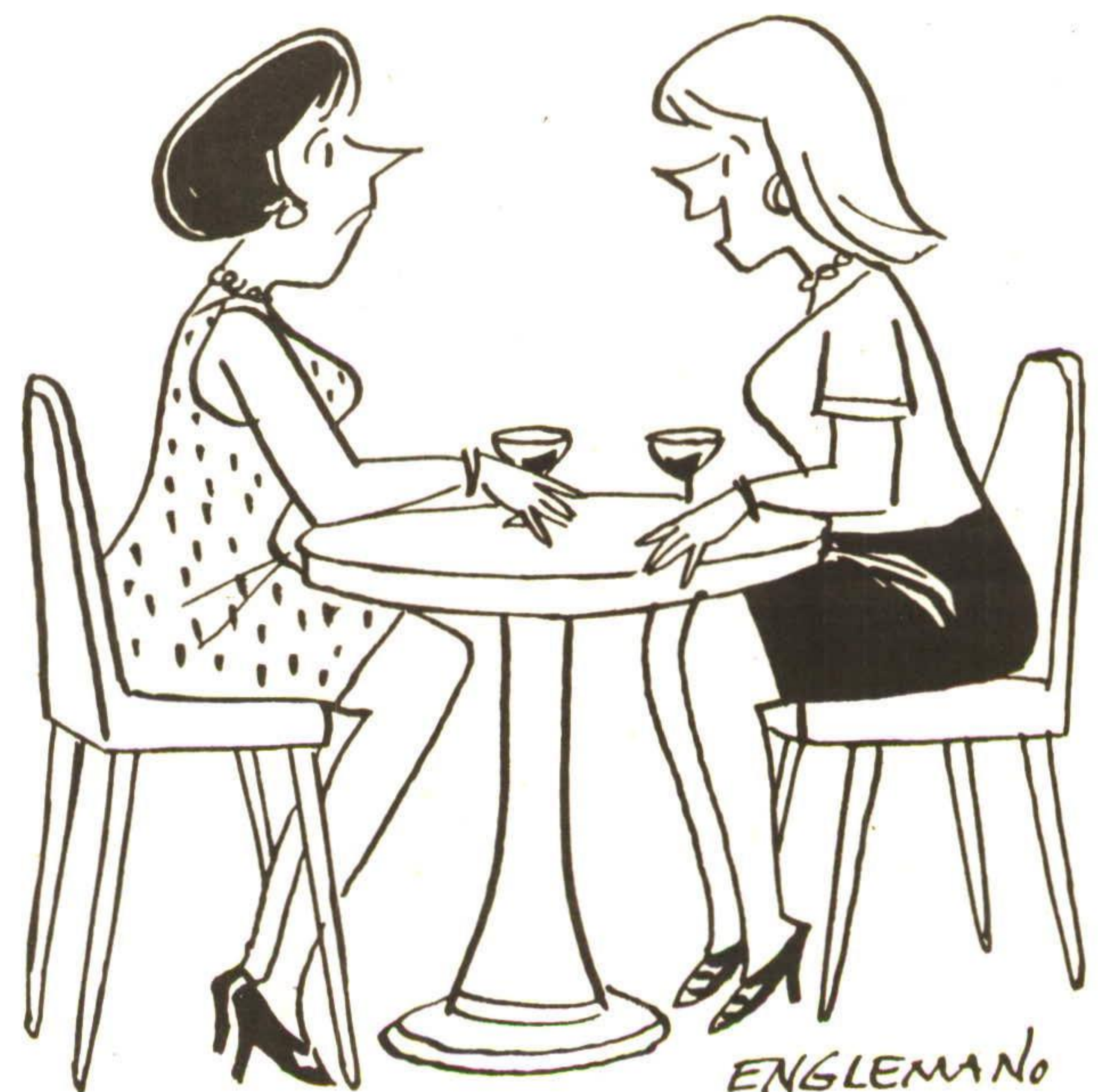
877-2359

## March Break Fun

From Mon. March 11 to Fri. March 15 kids of all ages are invited to take a break for fun, history and prizes at the Halton Region Museum's March Break program. Every afternoon, from 12 to 4 pm visitors to the drop-in program are invited to join a treasure hunt and win a prize, get a taste of pioneer cooking and more! There is a \$3.50 per child participant fee and for more information call Sandy Lucs at 875-2200.

## St. Patrick's Supper

Saturday, March 16, 6-8 p.m., Knox Presbyterian Church on Main St. in Acton is holding a St. Patrick's Day Supper. For tickets call 853-0360 or 853-2727 or are available at Village Variety Shoppe at 853-0411.



ENGLERMANO

"I never met a man who accepted women's lib more... he let's me pay for everything!"

FOR TRAVEL INFORMATION - GIVE US A CALL

## TUI ROOS TRAVEL AGENCY

ASSOCIATE NETWORK

232 GUELPH ST., UNIT 10, GEORGETOWN  
873-2000