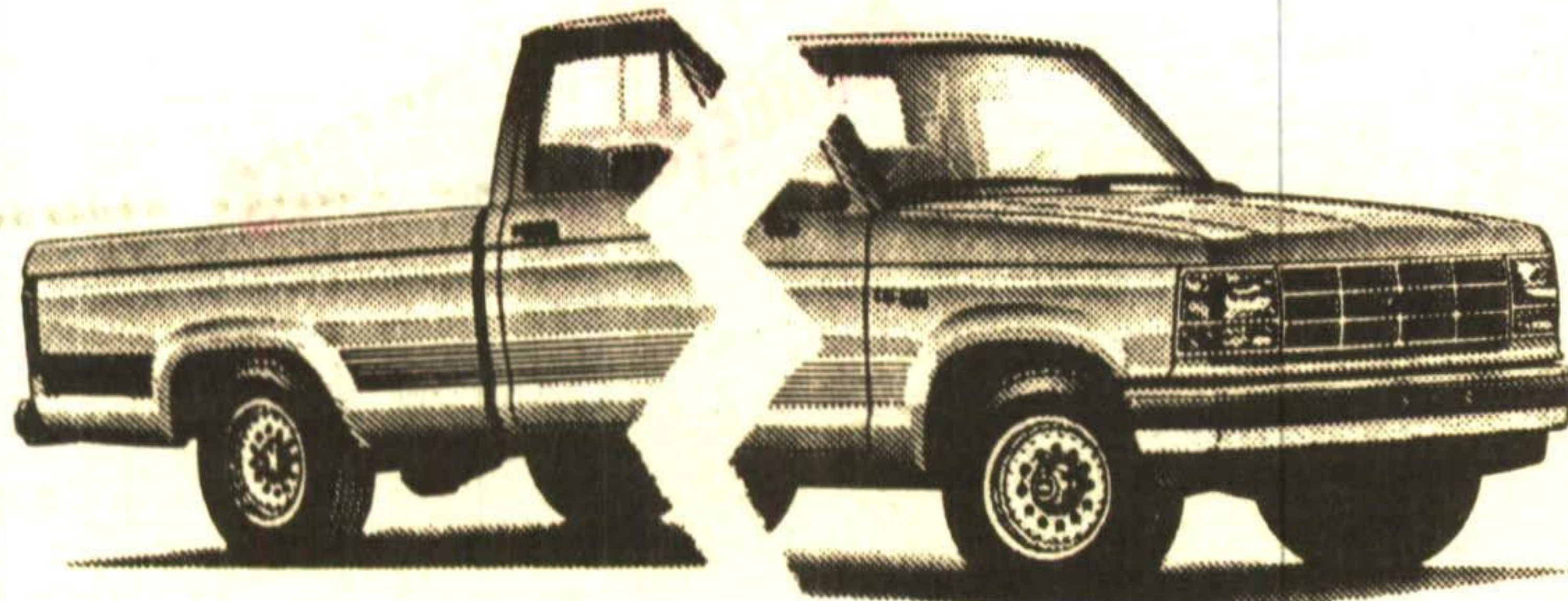
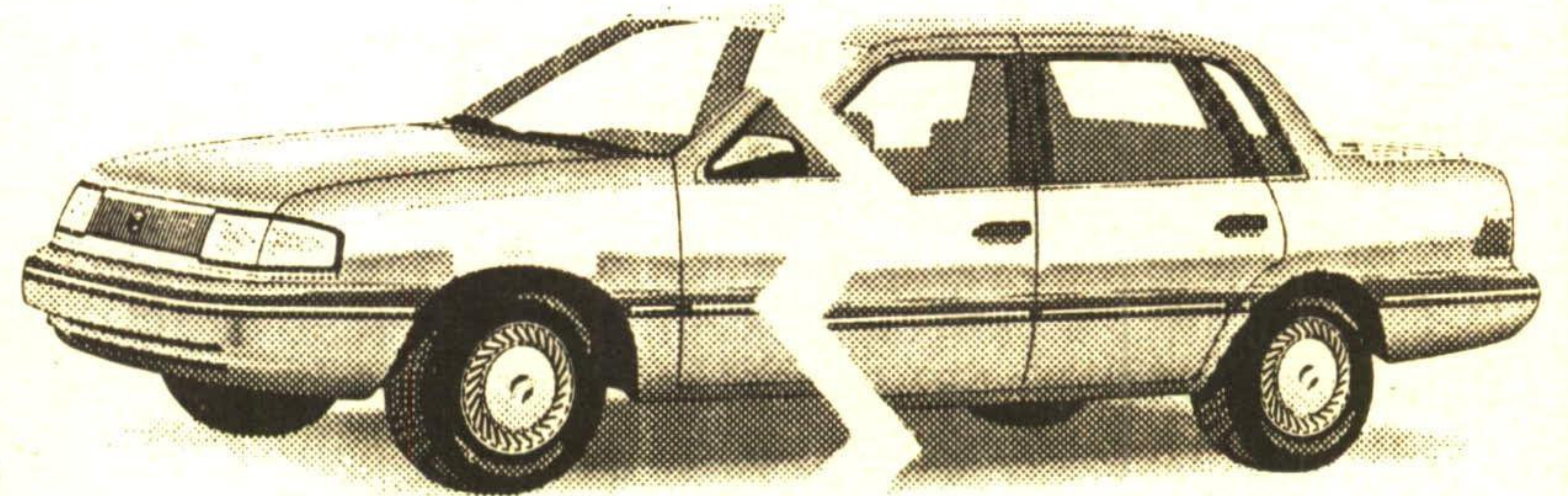


# DRIVE ANY NEW VEHICLE IN INVENTORY AND PAY ON ABOUT HALF **The PARK PLAN**



**DECISIONS  
HARD  
FOR YOU?  
MAKE IT  
EASY!!  
MAKE HALF  
A DECISION!!**



## 1991 RANGER



**The  
PARK PLAN  
ASK US!!**

## 1991 TOPAZ L

### PARK LINCOLN MERCURY PRE-OWNED VEHICLES

<p><b>1989 MUSTANG GT CONVERTIBLE</b> Hot Red with white leather sport buckets. 5.0L HO with automatic overdrive. Only 25,625 miles. #1037-A</p>	<p><b>1989 AEROSTAR CARGO VAN</b> Colonial white 6 cyl., auto O/D, power steering &amp; power brakes. Only 42,250 miles. Just the ticket for the handy-man!! #1053-B</p>	<p><b>"4X4"</b> <b>1989 F250 S/C PICK-UP</b> In Bright Regatta Blue &amp; Colonial White tu-tone, matching blue cloth captains chairs, air, AM/FM cassette, spd. control, power windows &amp; locks. Vehicle is also equipped with full flared running boards &amp; cap. Only 31,060 miles!!! &amp; balance of factory EXTENDED WARRANTY!! #1097-A</p>	<p><b>1989 F250 SUPER CAB</b> 8 cyl. with automatic transmission. Blue with tinted glass, cruise &amp; tilt steering. Cap included. Super clean unit!!! Lo, lo mileage!! Only 13,480 miles. #1036-A</p>	<p><b>1988 GRAND MARQUIS "LS"</b> Finished in light sandalwood. V8 automatic O/D tilt steering, speed control, automatic climate control. Yes folks, it's fully loaded!! 51,327 miles. #1098-A</p>
<p><b>1988 LINCOLN MK VII LUXURY</b> Sport Coupe, finished in diamond blue clear coat with matching cloth &amp; leather interior. High output 5.0L V8 with automatic overdrive transmission, all options befitting a vehicle of this calibre. Only 58,072 miles. #0244-1</p>	<p><b>1988 F150 XLT PICK-UP</b> Cabaret Red/White tu-tone. 8 cyl. automatic O/D with power brakes, steering, windows &amp; locks, also air, cruise, tilt &amp; tinted glass. With 35,467 miles only &amp; EXTENDED WARRANTY!! #0422-A</p>	<p><b>WE WILL PAY THE GST ON PRE-OWNED VEHICLES UNTIL JANUARY 31/91</b></p>	<p><b>1988 FORD MUSTANG HATCHBACK</b> 5.0L HO 5 speed with air. Oxford white with tan interior. Low km. LADY DRIVEN HONEST!! 34,375 miles. #242-A</p>	<p><b>1988 GMC PASSENGER VAN</b> Finished in tu-tone blue. V8, auto O/D, cruise, air, AM/FM cassette &amp; aux. heater. 7 passenger with captains chairs "STX" package. Family fun! 64,851 miles. #0394-A</p>
<p><b>1988 LINCOLN MARK VII LSC</b> Sporte Coupe finished in Sandalwood frost. 5.0L V8 automatic overdrive. Loaded. Very classy looking automobile! Well cared for - one owner car! #1057-A</p>	<p><b>1987 GRAND MARQUIS LS</b> Ocean Blue clear coat with complementing velour int. 5.0L EFI with automatic O/D. Fully loaded. Extremely well cared for, affordably priced. 80,640 miles. #0079-B</p>	<p><b>1987 AEROSTAR XL</b> Finished in soft silver clear coat metallic with charcoal interior. V6, automatic, 7 passenger. 43,765 miles. Ideal family van! #0400-B</p>	<p><b>1987 F150 XLT</b> Finished in Blue &amp; Silver tu-tone. V8, automatic O/D. Fully equipped including air, cruise, AM/FM cass., power locks &amp; windows. Really sharp looking truck! Only 59,168 miles. #1027A</p>	<p><b>1987 F350 D.R.W.</b> "Welders Special" - V8 Diesel, 5 spd., 1 yr. unlimited km's warranty! Excellent shape - ready to work! #P1129</p>
<p><b>1987 E150 CARGO VAN</b> Twilight Blue. V8, auto, O/D. Capt.'s chairs, AM/FM radio. Power steering &amp; brakes. Perfect for work! One owner. Only 71,250 miles. #1104-B</p>	<p><b>1985 PONTIAC BONNEVILLE</b> Finished in midnite blue with matching interior. V6, automatic. Well equipped with air, AM/FM &amp; cruise control. Comfortable &amp; reliable transportation! One owner. Only 75,625 miles. #1044-B</p>	<p><b>1984 CADILLAC DEVILLE</b> Beautifully finished in medium red metallic with luxurious leather interior! All creature comforts and in outstanding condition! Go first class in full size luxury! Only 66,633 miles. #1101-B</p>	<p><b>1987 MERCURY TOPAZ</b> 4 drs. Twilight Blue with Charcoal interior. 4 cyl., 5 speed with AM/FM &amp; air cond. Power steering &amp; brakes. One owner, excellent value! Only 59,520 miles. #1100-A</p>	<p><b>1989 CHEVY BLAZER 4 X 4</b> In two-tone blue-grey, V6, automatic, fully equipped, top of the line, "Tahoe Package". Both fun and practical. Let it snow!! Only 37,349 miles. #1085B</p>

# PARK LINCOLN - MERCURY

Located Conveniently in Halton Hills  
on Highway 7 - between Georgetown and Acton

**877-2261**

8.9% 24 month 'Selected Vehicles'



**798-7822**