

**CHRISTMAS INVENTORY LIQUIDATION BLOWOUT**

**60% OFF ALL DIAMOND RINGS**

**UP TO \$2500 INSTANT CREDIT**

**UP TO 50% OFF**

**KERNS JEWELRY**

52nd ANNIVERSARY  
Georgetown Marketplace 877-1230  
"The diamond people since 1939"

## How to create a wild neighborhood

By KEVIN CALLAN

There's nothing more entertaining and enlightening than to watch the daily happenings around one's backyard birdfeeder. By the first month of cold spells and snow squalls, I've got to know every hyper-active chickadee, cursed at every bossy bluejay, and chased away every alley cat and greedy squirrel. It's a regular soap opera out there!

The following charts, from "Attracting Backyard Wildlife" by Bill Merilees, will help any birdfeeder fanatic trying to enhance their backyard for a variety of feathered friends:

### Commercial Seed Preference

Seed Type	Species
White Proso Millet	House Sparrow
	Song Sparrow
German Millet	House Sparrow
Red Proso Millet	Dark-eyed Junco
	Song Sparrow
Sunflower Seeds	Chickadees
	House and Purple Finch
	Evening Grosbeak
Canary Seed	Dark-eyed Junco
Peanuts	Blue Jay
Hulled Oats	European Starling
Cracked-corn	Dark-eyed Junco
Thistle	American Goldfinch

### Other Foods Preferred

Food Item	Species
Suet	Woodpeckers
	Chickadees
	Jays
	Nuthatches
Chick Scratch	Dark-eyed Junco
	Song Sparrow
Chopped Peanuts or Peanut Hearts	Chickadees
	House Finch

Peanut Butter Mixes Woodpeckers  
Jays  
Chickadees  
Nuthatches

Shrubs and trees that attract birds to backyards year round: Hawthorn; Choke Cherry; Red-Osier Dogwood/Grey-Osier Dogwood; Highbush Cranberry; Nannyberry; Russian or Autumn Olive; Honeysuckle; Yellow and White Birch; Mountain Ash; Sumac; Crabapple.

Throughout the winter months I enjoy creating new exciting recipes for my backyard visitors. Basically, these "Chef's surprises" are made by mixing two main ingredients: fat, usually suet or peanut butter, and seed grains of a wide variety. Fruit, kitchen scrapes, and break are a few other tid-bits to add now and again.

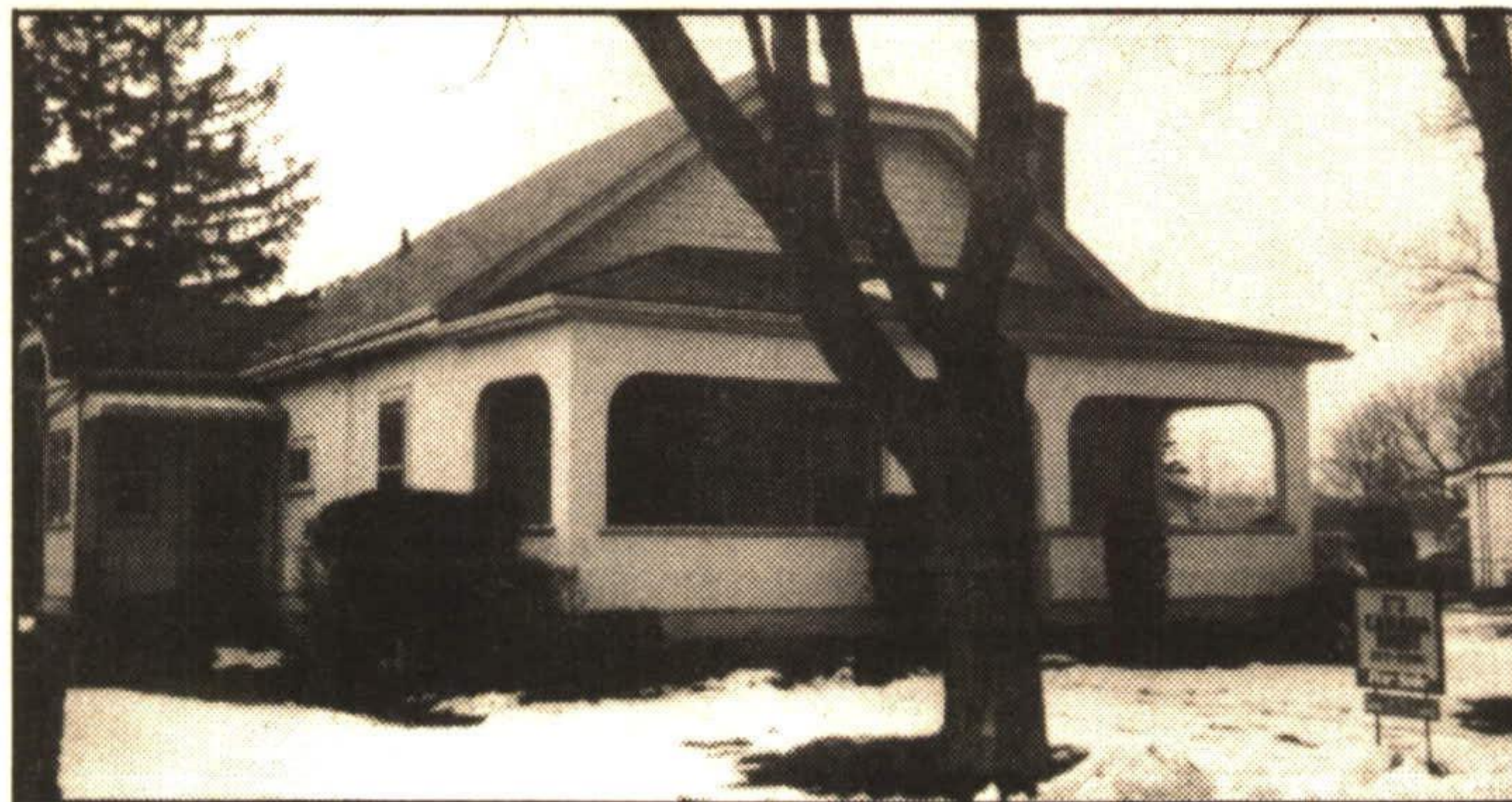
Exotic seeds, such as thistle (niger) seed, buckwheat, and poppy seed, can be found at a specialty feed store or a pet shop.

When adding fat, make sure not to use bacon grease - the salt content is way too high.

More importantly, make sure to continue feeding, especially if you are the only backyard feeder in the neighborhood. Winter birds become extremely dependent on your regular hand-outs. In fact, many species of birds have increased in population due to backyard birdfeeders, while others have decreased dramatically.

To get the children involved in backyard feeding, this "Chickadee Ball" recipe is a sure thing: Cut up or grind one pound of suet. Heat slightly until suet softens and becomes sticky. Stir in enough whole or shelled sunflower seeds (about 1 cup/250 ml) so that the mixture becomes stiff. Roll into 5 cm (2 in.) diameter balls and cool in refrigerator or freezer. Hang out in mesh bag and await the thankful feathered friends while enjoying a hot chocolate by the kitchen window.

## NEW LISTING! NEW LISTING!



### FIRST TIME BUYERS

Take a look at this 3 bedroom two storey home in the older area of town, walking distance to GO train, living room, dining room, eat-in kitchen, new roof, new furnace, lovely lot. Great starter home. For full details call JOHN A. EDGAR at 877-9500 or 453-2900. CT90-56

CANADA TRUST REALTY

## Sorority sisters help out

Acton's Xi Epsilon Chi Sorority Chapter started out the year in a "rootin'-tootin'" fashion, sitting among corn stalks and eating chili, dressed in western garb.

This is when they exchange summer experiences and family news. Also the chapter's priorities are planned for community service and financial donations.

The Cancer Society has always been on the sorority's list and they support the fund drives for stricken families. In some incidences, Social Services may give them a call. You will also see them helping the Red Cross during their blood clinics.

The sisters' skate exchange was very successful and they are distributors for Regal.

Women in Sorority are called "sisters." Why? When you need a helping hand, who do you call? A sister. Beta Sigma Phi is worldwide.

The sorority would like to take this opportunity to wish you and yours a Happy Holiday Season.

## Best at bridge

Switching to individual rather than team play Monday, the Georgetown Duplicate Bridge Club had the following winners: George Sargent was first; Cora Fairbridge, Rene March and Jack Kaarsemaker were tied for second; and Mike Lorusso was third.

Christmas bridge is this coming Monday at 1 p.m. at the Georgetown Legion, followed by a two week break.

### Toastmasters Club

We fix your knocking knees, dry mouths, sweaty palms, blank minds, so you can express yourself clearly and confidently. Weekly meetings on Mondays at 8 p.m., Glen Williams Town Hall. Call Roger 877-6709, John 877-8028 or Pauline 873-0793.

### PINS Meeting

Parents In Need of Support, formerly called Toughtalk, welcomes parents with problems or concerns about their teens and pre-teens to its 7:30 p.m. meetings on the third Thursday of each month at Trinity United Church, Mill St. E., Acton. Call 853-1512.

## DEVELOPMENT CHARGES PROPOSAL PUBLIC INFORMATION MEETING

On December 12, 1990 the Regional Municipality of Halton received and tabled a draft study that proposes new development charges and policies. The purpose of this study is to review and update Halton's development charge policies and practices to ensure their conformity to the Development Charges Act, 1989.

A Public Information Meeting pursuant to Section 4 of the Act will be held to explain the study's purpose, methodology, and proposed modifications to Halton's development charges. The purpose of the Meeting is to inform the public of the proposal under consideration and to solicit public input. The meeting will be held as a Special Meeting of the Region's Administration and Finance Committee which is a Standing Committee of Regional Council.

All interested persons are invited to attend the Public Information Meeting which will be held on:

Wednesday, January 9, 1991  
6:00 p.m.-9:00 p.m.  
Council Chambers  
Regional Administration Building  
1151 Bronte Road  
Oakville, Ontario  
L6J 6E1

Please note that those who will attend the meeting or provide written submissions can obtain a draft copy of the study from the Finance Department, Regional Administration Building, 1151 Bronte Road, Oakville during business hours. Written comments are required by no later than Friday, January 18, 1991.

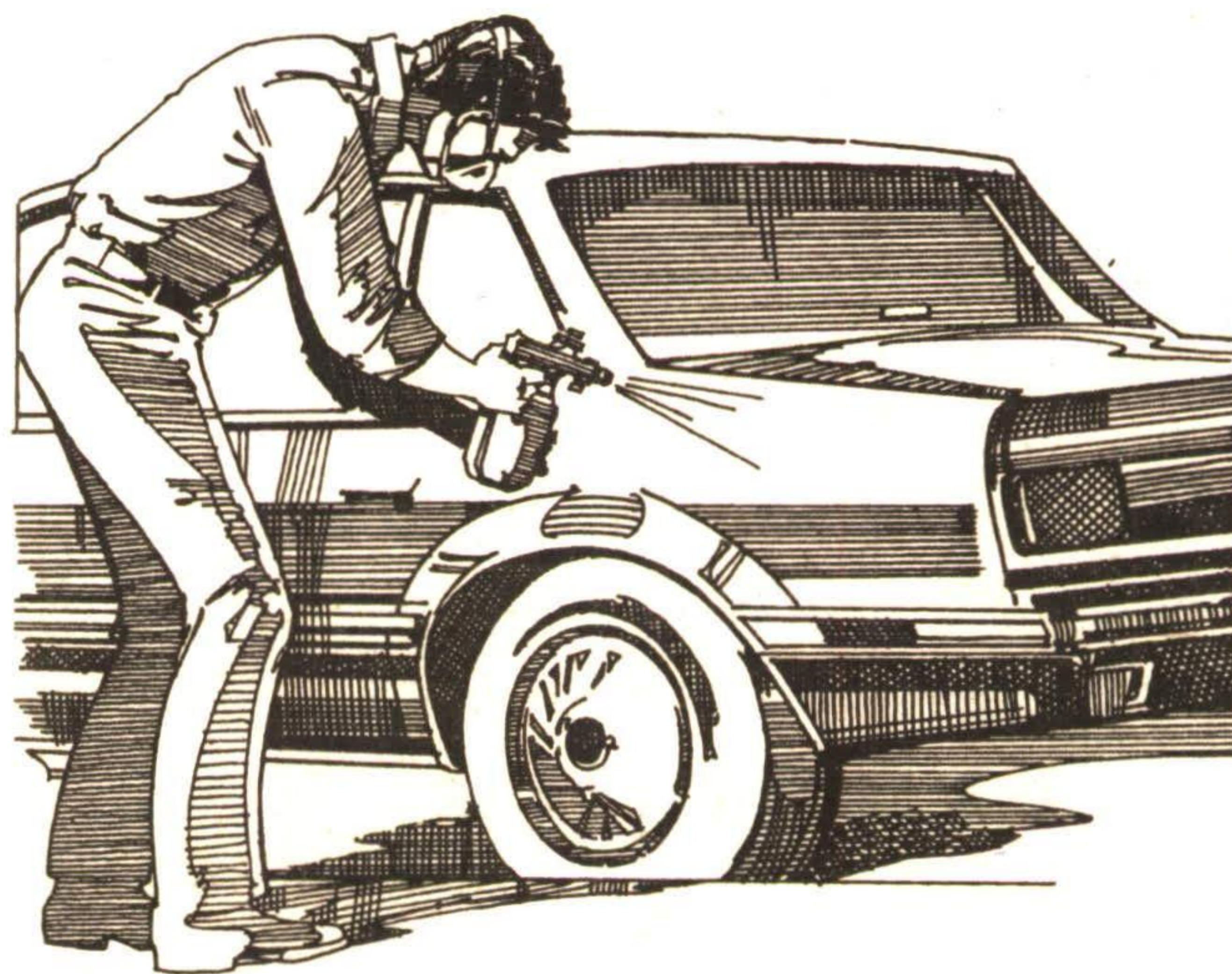
Comments received in writing and those expressed at the Public Meeting will form input into the final report which will be presented to the Administration and Finance Committee on February 13, 1991 and tentatively to Council, along with supporting by-law(s), on February 20, 1991.

Any comments or requests for further information regarding this study, may be directed to Dave Birkett (ext. 345) or Mark Scinocca (ext. 626) at 827-2151, 878-8113 (Halton Hills) the Regional Municipality of Halton, Finance Department, 1151 Bronte Road, Oakville, Ontario, L6J 6E1.

J. Louise Temple  
Regional Clerk



## UNDER NEW MANAGEMENT Perfect To The Finishing Touches



Careful attention to detail sets our shop apart from others.

We're not satisfied with the job until you are - whether it's taking out a small dent or restoring a badly damaged vehicle to like-new condition.

Insurance work is always welcome, and we're happy to give free estimates in writing.

Mel, Doug & Don Edwards

853-1370

Speyside Auto Body

R.R. #4, Acton  
1 mile S. of Acton on #25 Hwy.