

ARTHUR F. JOHNSON & ASSOCIATES
LIMITED REALTOR

247 GUELPH ST., GEORGETOWN L7G 4A8
* Sales Representative ** Associate Broker



LOWEST PRICE BUNGALOW!

Peel Village, 3 bdrm., beautifully fin. rec. rm. with bar. Interior is immaculate. A must to see - very private. Incl. 5 appliances, all window coverings. Call Pam Reid*. 90-422



IMPRESSIVE CUSTOM BUILT

Family room with fireplace. Central air, pool, etc. Offered at \$389,000. Ev Henderson*. 89-344



MOVE INTO PRESTIGE AREA

Attractive 2 bdrm. home on 50'x113' lot in Churchville. Close to "GO", shopping, 5 min. to Hwy. 401. Eat-in kit., 4 appliances, new furnace, cent. Call Joan Rollings*. 90-431



4 BEDROOM TOWNHOUSE

\$139,000 for this E-X-T-R-A- large townhouse. Master bedroom has 2 piece ensuite. Finished basement. New P.T. fence. New sidewalks in 1989. Iris Irwin*. 877-7494. 90-364



QUIET COURT SETTING

Immaculate, 4 bdrm. home, main fl. fam. room, 16x32 inground pool, upgraded broadloom, windows and furnace, private patio area, gas BBQ plus many other extras at \$215,000. Make an offer. Call Herb Spitzer*. 90-444



NEW LISTING LIMEHOUSE COUNTRY LIVING

On 3/4 of an acre sits this 3 bedroom split level home. Main floor family room with Franklin fireplace. Living room has stone fireplace, 2 baths, detached 2 car garage. Lots of parking. Call Ursula Zeidler* to show you. 90-449



130' LAKEFRONT \$179,900

Gorgeous location, has 3rd bdrm. off rec. rm., dining rm, eat-in kit. & w/o to deck overlooking the lake plus much more. Call Don Hearn* today. 90-433



BIG IS THE WORD

To describe this bright spacious family home. Has eat-in kitchen, mainfloor family room, log burning fireplace. Located on lthe edge of countryside. Call E.G. (Ed) Wood** to view. 90-338



BACKING ONTO RAVINE

4 bedroom home on Eden Place. Asking only \$235,500. Inground pool, etc. Call Bill Henderson*. 90-323



BARGAIN HUNTERS \$179,900

3 bdrm. brick and stone bungalow on 151' x 100' lot with a beautiful view. Finished rec. rm. with brick fireplace, games rm, central air. \$93,000 mtg. at 11-3/4%. Due Sept. 1993. Call Gloria Foreman*. 90-386



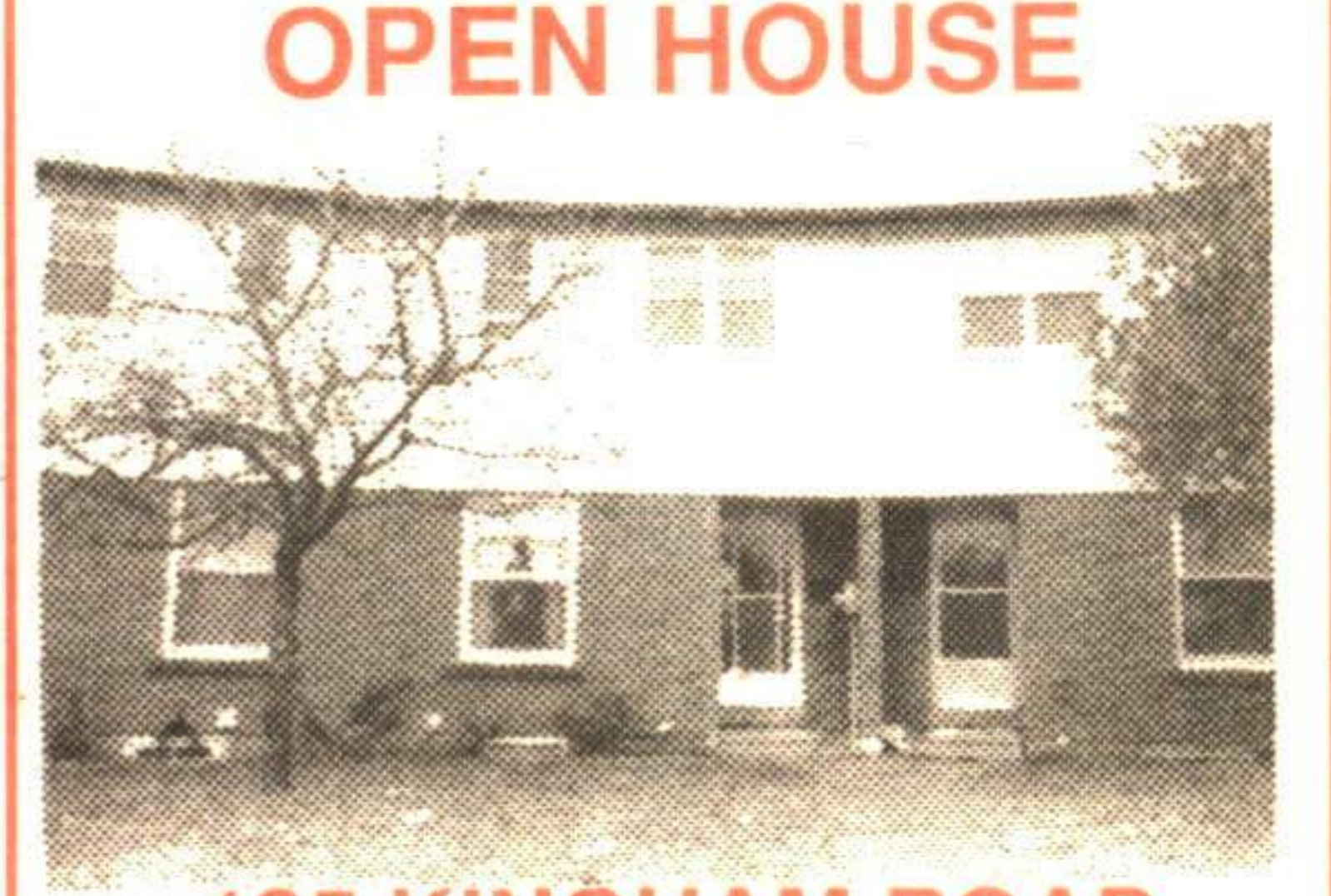
STEPS TO PARK

Quiet dead end street, 4 bedrooms, eat-in kitchen, dble garage, circular staircase and more. Contact Nick Lorito*. 90-379



BETTER THAN NEW TOWNHOUSE

Tastefully decorated end unit, basement finished with 2 pc. bath, good location, move in condition. Bert Hutchinson*. 90-405



OPEN HOUSE

135 KINGHAM ROAD \$125,900

2:00-5:00 SUN., DEC. 2nd SEEING IS BELIEVING! Call Brenda Payton* regarding details and directions. This one won't last! 90-447



CUSTOM RANCHER ON RAVINE

Sprawling and spacious 4 bedroom home with walkout on lower level in superb area of town. Asking \$289,900. Call Ev Patterson*. 89-291



DETACHED HOME \$179,900

3 bedroom up, 2 bedrooms down, charming custom made pine kitchen cupboards. French doors, nice trim. 75' x 125' lot. Do it! Call Alice Pokluda**. 90-366



ERIN 5 ACRES

Solid new bright, raised bungalow. Tom Comery*. \$299,000. 90-235



VICTORIAN WITH STYLE

A most comfortable country style home in the park area. \$239,000. Phil Carney*. 90-286



NEW LISTING IN-LAW SUITE

Excellent older home near "GO" Train. Separate entrance to in-law suite. Call Doug Anderson* for details. 90-421



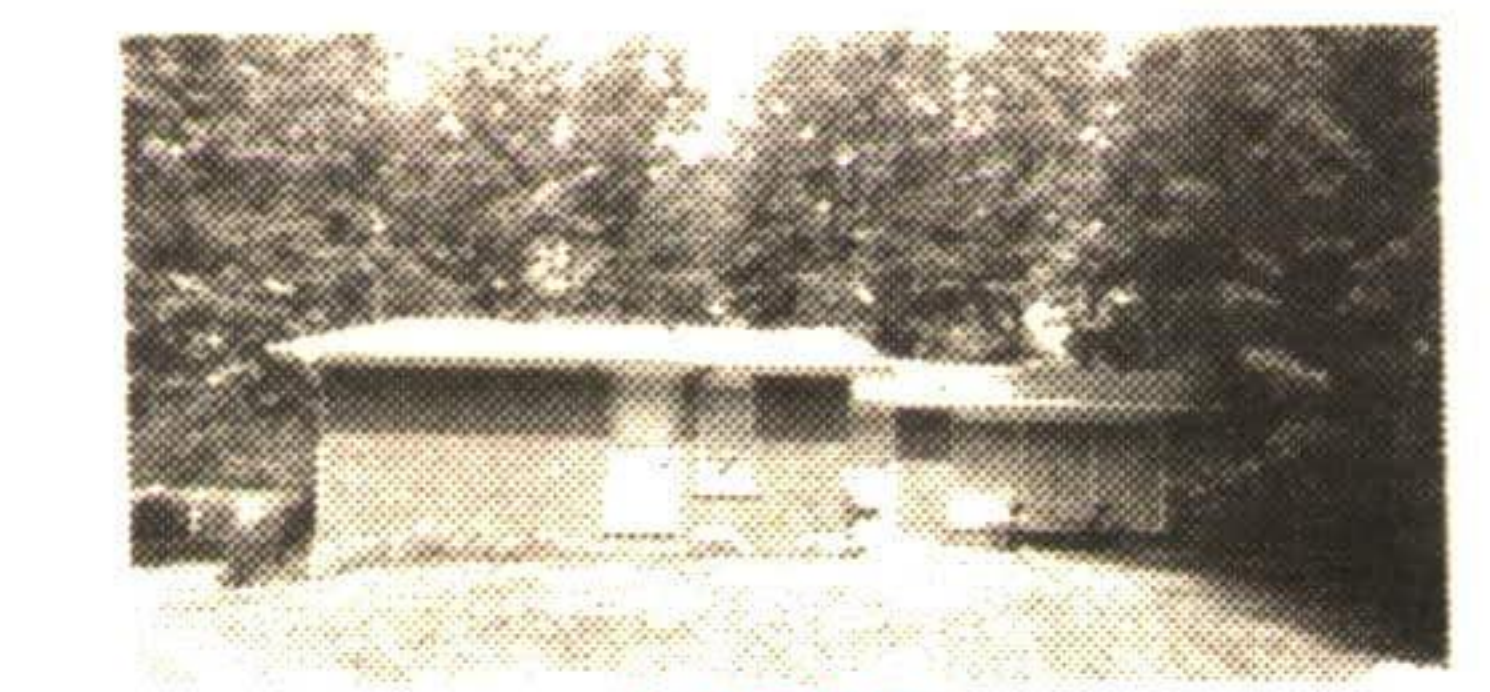
25 ACRE ESTATE LOT

Enjoy this natural secluded piece of Ontario. Branch of West Credit River winds through. Enjoy the cottage home w/fireplace while you plan your future retirement home! Asking \$335,000 - open for offers. Harry Burt**. 90-331



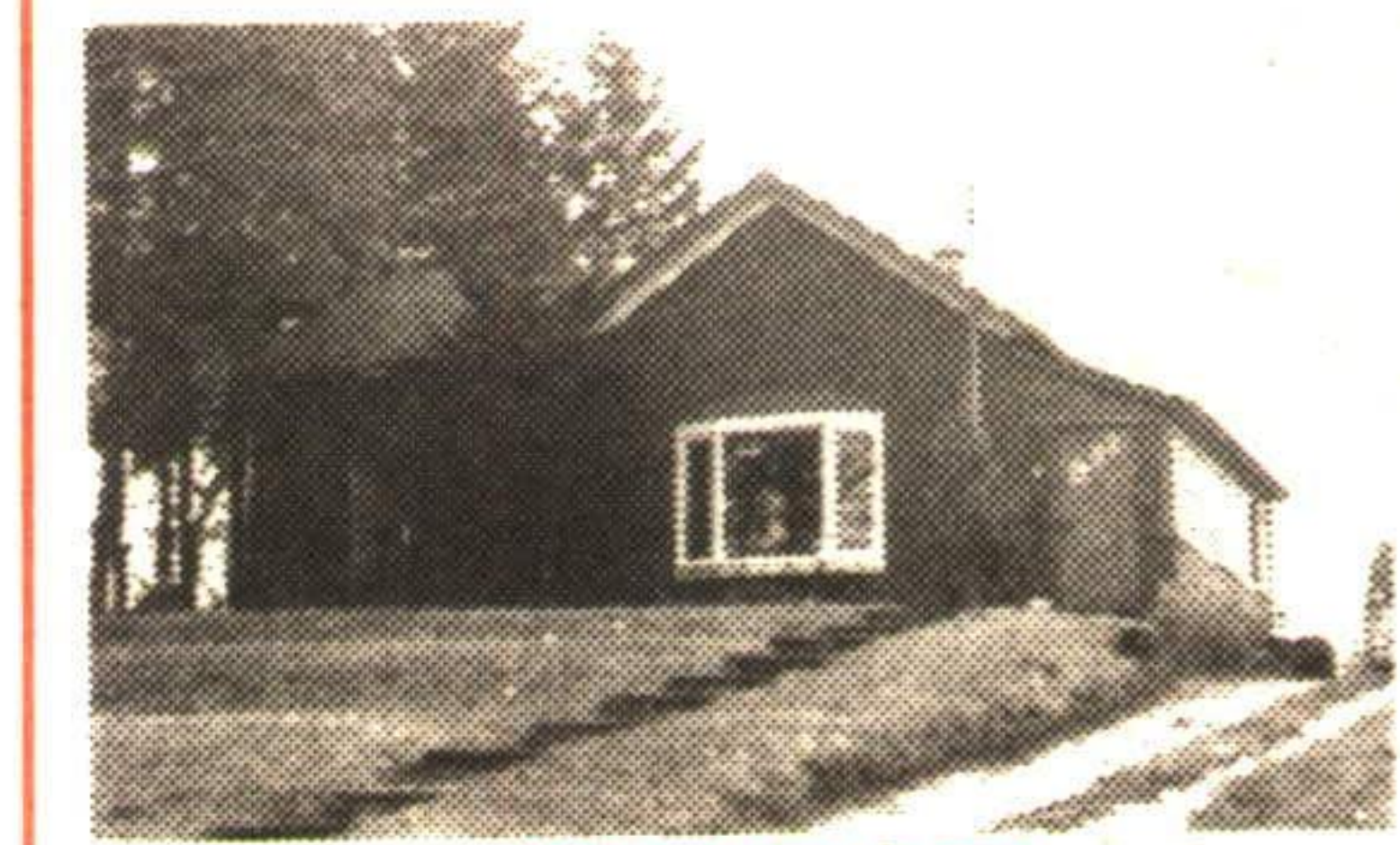
SHADY LANE EDGE OF TOWN

This dream rancher with large rooms is picture perfect and set well back from the road. "GO Train". \$319,000. Michele Smith*. 90-319



NEW SOUTH OF TOWN \$219,900

Just look at this super buy. A custom built spacious three bedroom home featuring smart floor plan, 2 baths, hardwood floors, sauna. Surrounded by tall shade trees. Hurry! Call Helen Atkinson**. 90-325



GREAT BEGINNINGS!

Looking for a house under \$150,000. Try this for size - a cozy 2 bdrm. bungalow just steps from "GO" Train. Call for details, Marilyn Worrall*. 90-448



ATTENTION COMMUTERS!

Enjoy the beauty of the country in this elegant 3 bdrm. home on a 3/4 acre lot. The gorgeous green house kitchen is only one of its many features. Quality and value throughout and only a 5 min. drive to the 401. Offered at \$269,900. Chris Vale*. 90-372

CHRISTMAS IN FLORIDA!

On a one acre lot, just north of Tampa in "Green Acres" subdivision. Close to Golf Course, deep sea fishing, hunting & lots more! Build your dream home (or camp out). Think NOW for your retirement . . . Only \$9,900. Call Anna Mary Lostritto* 843-2656, 453-1286. 90-384



SPECTACULAR RAVINE

A-1 neighborhood. Outstanding sidesplit on a quiet crescent location and a RAVINE LOT make this home almost impossible to compare. But you don't need to. This home has everything you've been looking for. Linda Armstrong* will show you. 90-365



VENDOR WILL LISTEN!

To a reasonable offer, will hold mortgage. Come and see Century home, 85 acres. Call Cathy Perego*. 89-437



ONE LEVEL CONVENIENCE

All brick home on a lovely ravine lot, new broadloom, hardwood, central air, fireplace, walkout, 2 extra bedrooms and more. Call Sandra Nairn* but hurry! 90-399



CONDO LIVING AT IT'S BEST!

In this immaculate, sunny 2 bdrm. unit... includes 5 appliances, extra parking space, added storage space, tennis, indoor pool, etc. etc. It's the luxury you deserve! Carol McMurray*. 90-401