

HALTON HILLS

# Marketplace

**PRIME  
ADVERTISING  
SPACE FOR SALE  
CALL  
873-0301**

360 Guelph St., Georgetown  
877-5211

Your weekly guide to Fantastic Bargains, Specials,  
Real Estate and Classified Listings!

VOLUME 7 -- NO. 4

SATURDAY, Nov. 24, 1990

**ARTHUR F.  
JOHNSON &  
ASSOCIATES**  
LIMITED REALTOR

247 GUELPH ST., GEORGETOWN L7G 4A8  
\* Sales Representative \*\* Associate Broker

**BUILD YOUR  
DREAM HOME!**

Half acre lot in registered subdivision. Roads and hydro to be completed in 1992. Must Sell! Only \$48,500. Call Pam Reid\* now. 90-425



**IMPRESSIVE CUSTOM BUILT**  
Family room with fireplace. Central air, pool, etc. Offered at \$389,000. Ev Henderson\*. 89-344



**MOVE INTO PRESTIGE AREA**  
Attractive 2 bdrm. home on 50'x113' lot in Churchville. Close to "GO", shopping, 5 min. to Hwy. 401. Eat-in kit., 4 appliances, new furnace, cent. Call Joan Rollings\*. 90-431



**4 BEDROOM TOWNHOUSE**  
\$139,000 for this E-X-T-R-A large townhouse. Master bedroom has 2 piece ensuite. Finished basement. New P.T. fence. New sidewalks in 1989. Iris Irwin\*. 90-364



**IT'S TRUE**  
In Georgetown 1 1/2 storey 3 bdrm., formal dining & living, huge mud room off kitchen, beautiful 50 x 127 ft. lot. Immediate possession. Only \$139,900. Call Herb Spitzer\*. 90-400



**MAKE THIS YOUR FIRST HOME**  
Only \$159,900. 3 bdrm., brick bungalow, large mature 132 ft. lot. Wooden deck off kitchen, detached garage, close to schools and downtown. Come and take a tour. Call Ursula Zeidler\* for directions. 90-403



**130' LAKEFRONT  
\$179,900**  
Gorgeous location, has 3rd bdrm. off rec. rm., dining rm., eat-in kit. & w/o to deck overlooking the lake plus much more. Call Don Hearn\* today. 90-433



**BIG IS THE WORD**  
To describe this bright spacious family home. Has eat-in kitchen, main floor family room, log burning fireplace. Located on the edge of countryside. Call Ed Wood\*\*. 90-338



**BACKING ONTO RAVINE**  
4 bedroom home on Eden Place. Asking only \$235,500. Inground pool, etc. Call Bill Henderson\*. 90-323



**TREED 1/2 ACRE - NORVAL**  
Charming 3 bedroom brick home offering privacy and seclusion. \$140,800 mortgage at 11 1/4% due Oct. 1991. 10 min. to 401. Only \$199,000. Call Gloria Foreman\*. 90-404



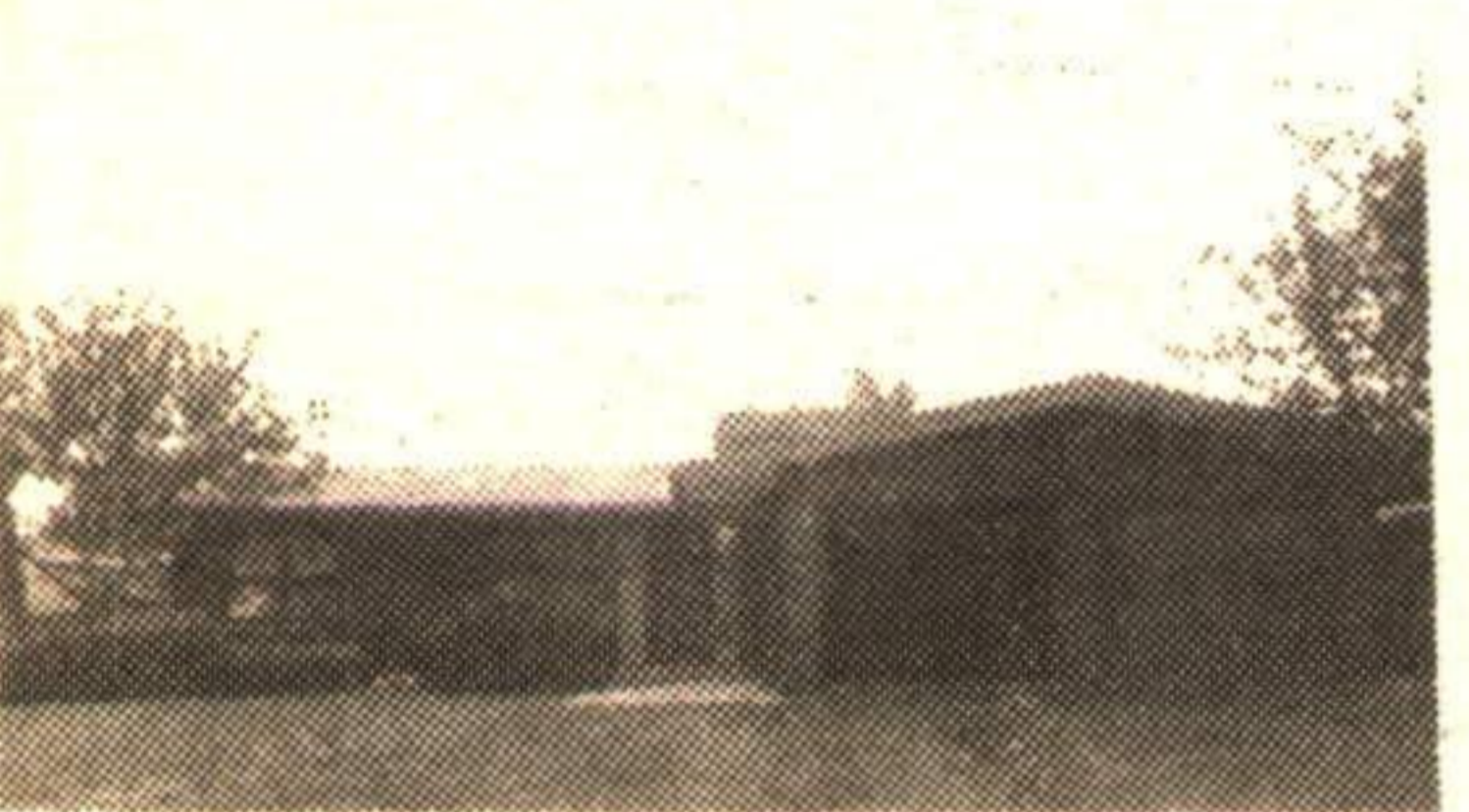
**STEPS TO PARK**  
Quiet dead end street, 4 bedrooms, eat-in kitchen, dble garage, circular staircase and more. Contact Nick Lorito\*. 90-379



**BETTER THAN NEW TOWNHOUSE**  
Tastefully decorated end unit, basement finished with 2 pc. bath, good location, move in condition. Bert Hutchinson\*. 90-405



**BAYFIELD SUBDIVISION**  
Reduced below builder price - \$499,900 on premium ravine lot. Custom built - be a smart shopper & compare. Call Brenda Payton\*. 90-298



**CUSTOM RANCHER ON RAVINE**  
Sprawling and spacious 4 bedroom home with walkout on lower level in superb area of town. Asking \$289,900. Call Ev Patterson\*. 89-291



**DETACHED HOME \$179,900**  
3 bedroom up, 2 bedrooms down, charming custom made pine kitchen cupboards. French doors, nice trim. 75' x 125' lot. Don it! Call Alice Pokluda\*\*. 90-366



**ERIN  
5 ACRES**  
Solid new bright, raised bungalow. Tom Comery\*. 90-235



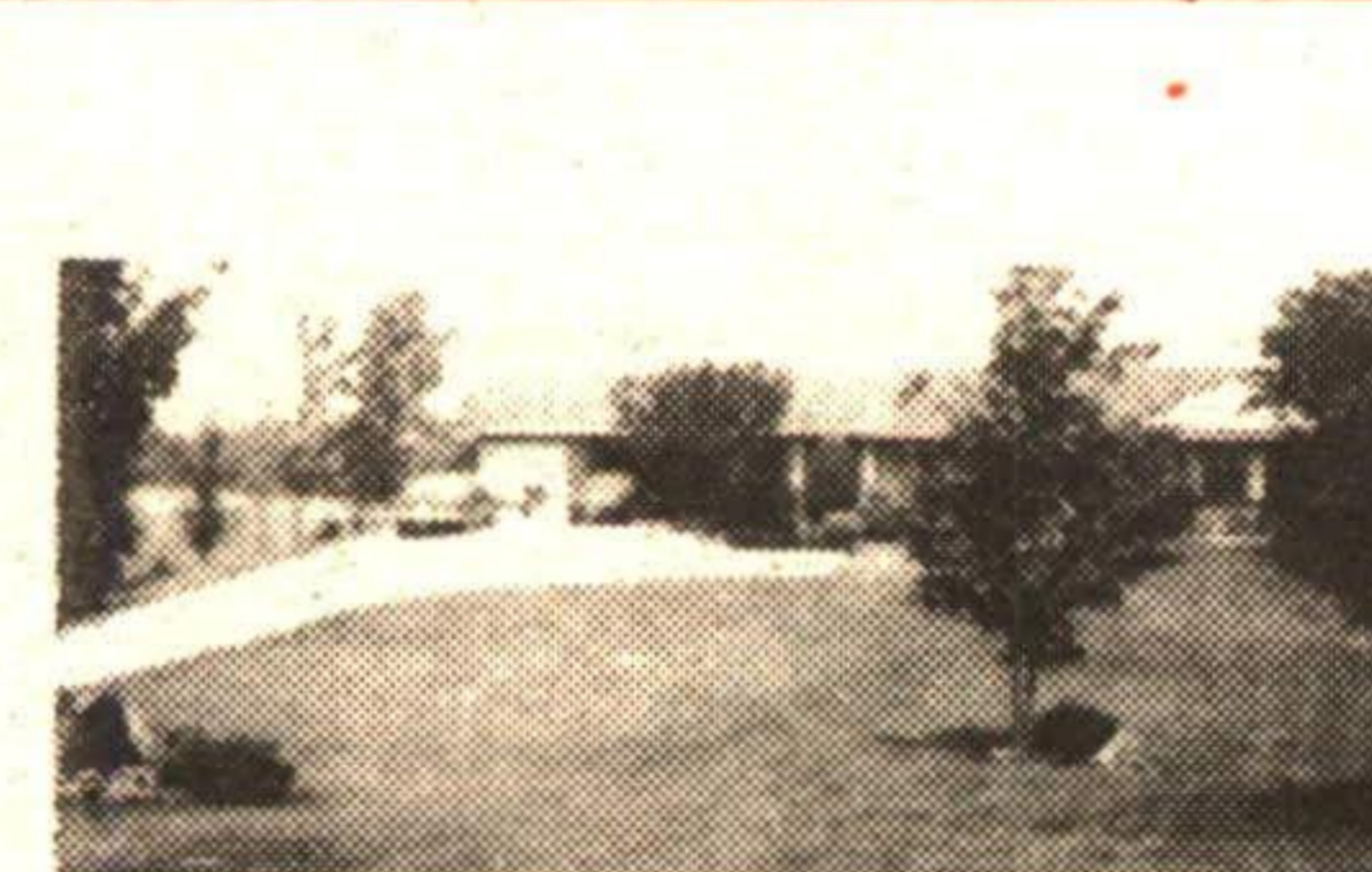
**VICTORIAN WITH STYLE**  
A most comfortable country style home in the park area. \$239,000. Phil Carney\*. 90-286



**NEW LISTING  
IN-LAW SUITE**  
Excellent older home near "GO" Train. Separate entrance to in-law suite. Call Doug Anderson\* for details. 90-421



**25 ACRE ESTATE LOT**  
Enjoy this natural secluded piece of Ontario. Branch of West Credit River winds through. Enjoy the cottage home w/fireplace while you plan your future retirement home! Asking \$335,000 - open for offers. Harry Burt\*. 90-331



**SHADY LANE - EDGE OF TOWN**  
This dream rancher with large room sis picture perfect and set well back from the road. "GO Train". #319,000. Michele Smith\*. 90-319



**NEW - SOUTH OF TOWN  
\$239,000**  
Just look at this super buy. A custom built spacious three bedroom home featuring smart floor plan, 2 baths, hardwood floors, sauna. Surrounded by tall shade trees. Hurry! Call Helen Atkinson\*\*. 90-325



**"LONG AND WINDING ROAD"**  
Leads to this 23 acre mini-farm with endless possibilities. Ideal home for two families. Sound interesting? Call Marilyn Worrall\* for more information. 90-314



**ATTENTION COMMUTERS!**  
Enjoy the beauty of the country in this elegant 3 bdrm. home on a 3/4 acre lot. The gorgeous green house kitchen is only one of its many features. Quality and value throughout and only a 4 min. drive to the 401. Offered at \$269,900. Chris Vale\*. 90-372



**BRAMPTON - DETACHED**  
3 bdrms., large kit., neutral decor, liv. rm. with w/o to patio. Finished basement with real stucco mouldings and hand painted design. Call A.S.A.P. Anna Mary Lostritto\*. 90-427



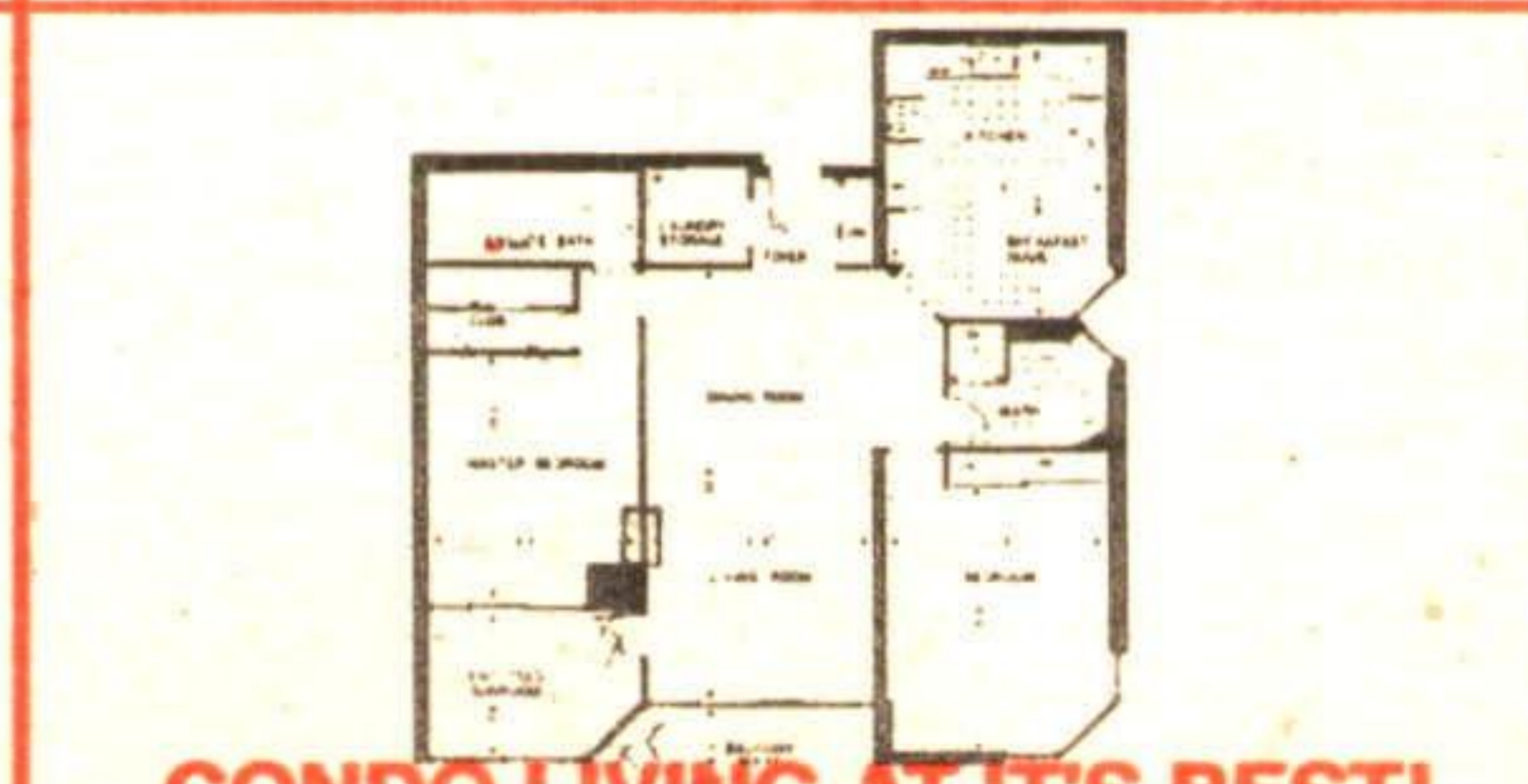
**SPECTACULAR RAVINE**  
A-1 neighborhood. Outstanding sidesplit on a quiet crescent location and a RAVINE LOT make this home almost impossible to compare. But you don't need to. This home has everything you've been looking for. Linda Armstrong\* will show you. 90-365



**VENDOR WILL HOLD MORTGAGE**  
85 ac. farm, century home, pond, woods and more. See it with Cathy Perego\*. 89-437



**ONE LEVEL CONVENIENCE**  
All brick home on a lovely ravine lot, new broadloom, hardwood, central air, fireplace, walkout, 2 extra bdrms and more. Call Sandra Nairn\* but hurry! 90-399



**CONDO LIVING AT IT'S BEST!**  
In this immaculate, sunny 2 bdrm. unit...includes 5 appliances\*, extra parking space, added storage space, tennis, indoor pool, etc. etc. It's the luxury you deserve! Carol McMurray\*. 90-401