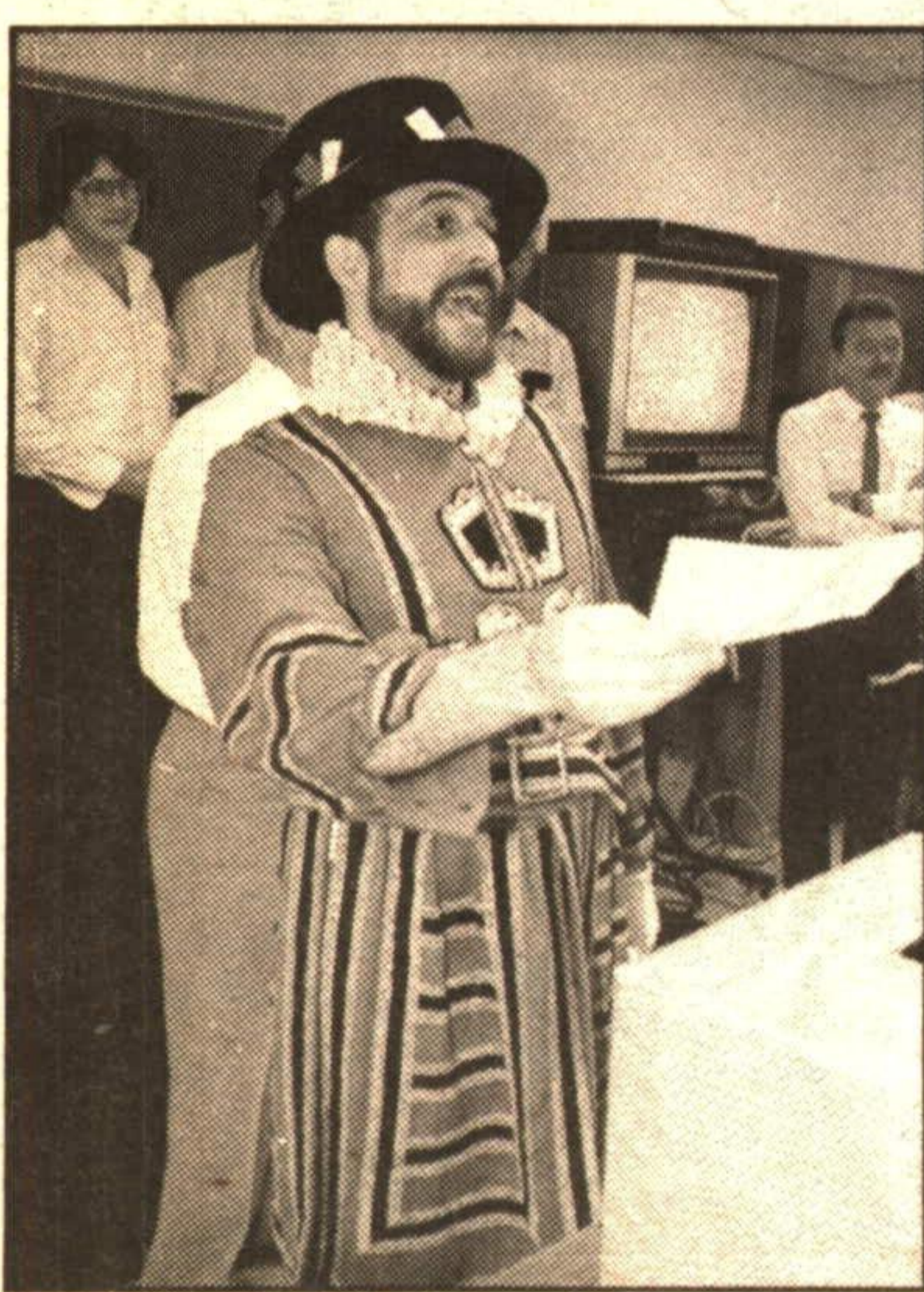


## Tally-ho to England

A dozen lucky employees and spouses from Varian will be enjoying four days in London, England in the near future after winning the Air Canada Lucky Dozen Celebration draw. Varian Customs and Traffic Manager Blake Baxter entered the contest by sending Varian's air waybills to Air Canada for the months of July and August. From tens of thousands, the Varian entry was drawn with Baxter's name. Varian officials awarded the 11 remaining trips to other employees by running a draw within the Georgetown plant. Winners were drawn by Air Canada's Wayne Morgan (in a Beefeater's uniform) Wednesday. Air Canada personnel and winning employees include (from left), Dwayne McDougal, Air Canada Area Sales Manager; Warren Tiede, Public Relations Air Canada; Janice Little, Varian Senior Accounting Clerk; Louis Girard, Air Canada Director of Cargo Sales, Ontario; Wayne Morgan, Air Canada Customer Service Rep; and Varian employees, Supervisor Steve Leonard, Machinist Elaine Hill, Master Technician Mike Fraser, Senior Technician Harold Andres and Blake Baxter. In addition to the trip and hotel accommodation, winners share 1000 British pounds spending money and the use of a minibus for the trip.

TED BROWN/WeekEnd



## GEORGETOWN PHOTO

Gift Ideas for the Whole Family

**VIVITAR AUTO FOCUS PS 135**

**SALE** REG. \$139.95 **99.95**

---

**VIVITAR 320 Z (with Zoom Lens)**

**SALE** REG. \$259.95 **219.95**

**BOTH ITEMS INCLUDE CASE, FILM, BATTERIES, ALBUM & 3-YEAR WARRANTY.**

MILTON PHOTO 878-3361    ACTON PHOTO SHOP 853-4814    GEORGETOWN PHOTO 873-1237  
 1 HOUR DEVELOPING SERVICE AT ALL 3 LOCATIONS

### CONSUMERS DISTRIBUTING

#### CORRECTION

We regret that due to limited supply, the following items may not be available at all store locations during the "Smart Santa Sale" flyer.

CATALOGUE	DESCRIPTION
794-511	Ni-Cad Battery Kit
672-147	Black Thunder Sound Machine
672-097	Pocket Flyer Truck
672-071	Remote Control Car Crusher
672-063	Overnite Battery Charger
626-796	Music Centre
610-766	45 Pc. Florina Dinnerware
563-254	AM/FM CD Player

**Tooth Chatter**  
 by **ALEX TRENTON,**  
 Denture Therapist

#### RELINING DENTURES

Loose dentures on a resorbed jaw bone, cause the distance between the nose and chin to become too short. As a result, the mouth and lip muscles sag, therefore causing the skin to become wrinkled and lined. The answer to this problem is either new dentures or "relining." If your dentures are under 5 years old, relining is probably the answer.

With relining, impressions are taken of the gums and bone as they are now. New plastic is added inside the dentures so they adapt to the new jaw contours. This makes the nose-to-chin distance longer, and makes the lips and cheeks fuller, therefore some of the wrinkles actually become "ironed out." It also makes the denture fit more snug to the gums, so that the denture becomes tighter.

Your gums are constantly changing, and shrinking of the gums can create sharp ridges forming, because of the pressure of the denture. This can cause considerable discomfort, and can lead to permanent gum damage. Relining your denture is a quick, inexpensive way of giving you much needed comfort.

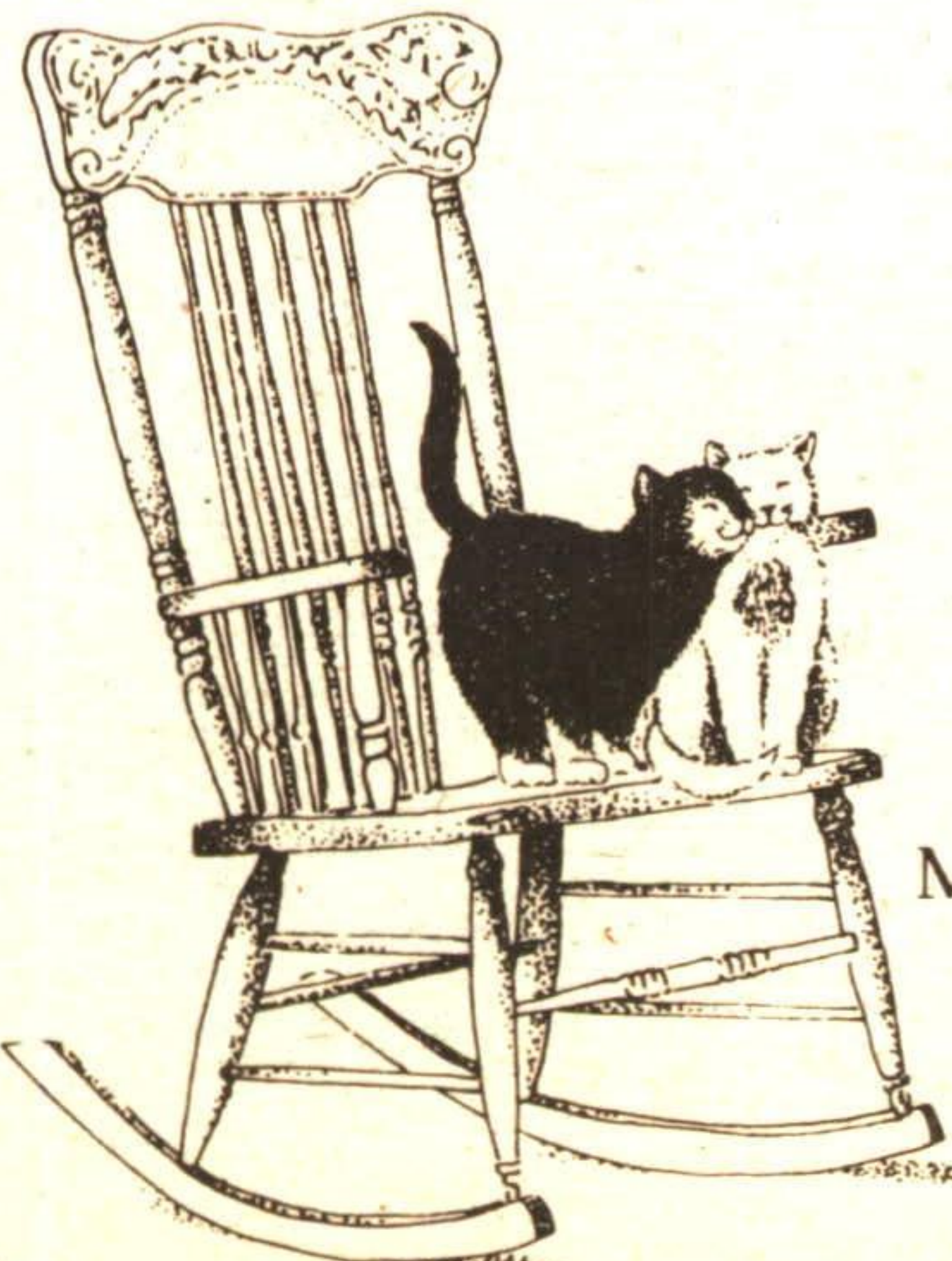
Your dentures and mouth tissues should be checked once a year, as ill fitting dentures can lead to various health problems.

A.W. Trenton, D.T.,  
 Denture Clinic, 18 Church Street,  
 Georgetown, Ont. L7G 2A5  
 (416) 877-2359

our classic embossed

# BOSTON ROCKERS NOW ON SALE

**BUY FACTORY-DIRECT AND SAVE!**  
 Quality Hand-Crafted Canadian Heirloom Furniture for Over 130 Years



**DOMINION CHAIR**  
 SINCE 1860  
 • BASS RIVER N.S. •

Steeles Avenue  
 Hwy. 25 & 401, Milton  
 Telephone: 875-4687  
 Monday-Saturday 9am to 9pm  
 Sunday: Noon-9pm

LEN TUITMAN AND STAFF PRESENT

## GREEN THUMB GARDENING

CREATE SOMETHING UNIQUE FROM ORDINARY HOUSEPLANTS

A few creative touches can turn ordinary houseplants into something extraordinary. It doesn't require any special powers, just a few tools and accessories and a dose of patience.

Here is a few ideas to get you going, but don't stop here, let your imagination loose and create your own masterpiece.

\* Train long, trailing stems of hanging houseplants around a ring that is secured into soil. Once the stems grow and fill out on the ring it grows into a living wreath. This works well with Ivy plants, Hoyas and Stephanotis.

\* A similar technique is to allow a trailing plant to grow up a cork or bark pole inserted upright into a pot of soil. Plants that develop aerial roots (roots that grow out of the stem) are particularly suited to this because they will anchor into the pole. This creates a slender, upright piece of greenery. Aerial roots readily develop on Pothos and numerous varieties of Philodendrons.

\* A thin, fan-shaped piece can be made by weaving trailing stems through a short trellis. Ivies are well suited to this treatment.

\* Topiary-like plants can be created from indoor plants too. Removing the bottom branches and/or leaves and then pruning the remaining head into a ball or other shape produces a formal topiary effect. As the head grows it will have to be occasionally pruned back into shape. Tall houseplants such as Weeping Fig, Covette, Citrus and Hibiscus work particularly well for topiary.

Each week Christine Cole of Tuitman's Garden Centre and Landscaping, Highway 25, 1 mile south of Acton, 853-2480, will be presenting helpful tips and information to assist you in creating your garden showplace!

# CAMPBELLVILLE

## Country Christmas

Saturday & Sunday  
 December 1 & 2, 1990  
 10 a.m. - 6 p.m.

Welcome, one and all, to an old-fashioned down home Christmas party! Our halls are decked, the carollers are in tune, sleigh bells ring, friendly shopkeepers offer greetings of the season and complimentary refreshments and amid the festivities, you'll find a wonderful array of the finest handcrafted clothing, giftware, art, furniture, antiques and holiday treats for your Christmas gifting.

- |   |   |
|---|---|
| CAMPBELLVILLE OPERA EMPORIUM<br>Gifts - Crafts - Cafe & Take Out - Ice Cream - Homebaking | OLD IS BEAUTIFUL<br>Early Canadiana - Collectables & Primitives |
| THOMAS THEKAN<br>Furniture Maker<br>Handcrafted for enduring quality                      | RED ROOSTER ANTIQUES & COLLECTABLES                             |
| MARANATHA LOG HOUSE FLOWERS<br>Fresh-Dried-Silk-With the creative touch of antiques       | LUMBERYARD TEAROOM<br>Breakfast-Lunches-Afternoon Teas          |
| 1846 LOG HOUSE GALLERY<br>Handmade pottery & much more                                    | GRANNY'S PLACE<br>Antiques - Crafts & Quilts                    |

The Village of Campbellville  
 located south of the 401  
 (Exit #312 at the Guelph Line)