

# Farmer turns land into compost site

The first commercial composting site in Halton will begin its initial operations next week.

Scott Farms in Milton, located west of Trafalgar Rd. on Britannia Rd., will be accepting leaves and other yard waste materials from Halton Hills and other regional municipalities beginning this Monday (Nov.5). The Town of Milton has not yet committed itself to use the site.

According to manager Jim Scott, Halton Hills is being charged \$30 per tonne of leaves and natural yard waste. A higher fee of \$50 per tonne will be charged for materials that need to be ground up at the farm.

Right now, the Town ships its leaves, along with other solid waste, to landfill sites at a cost of \$116 per tonne. These tipping fees are expected to rise as high as \$170 per tonne next year.

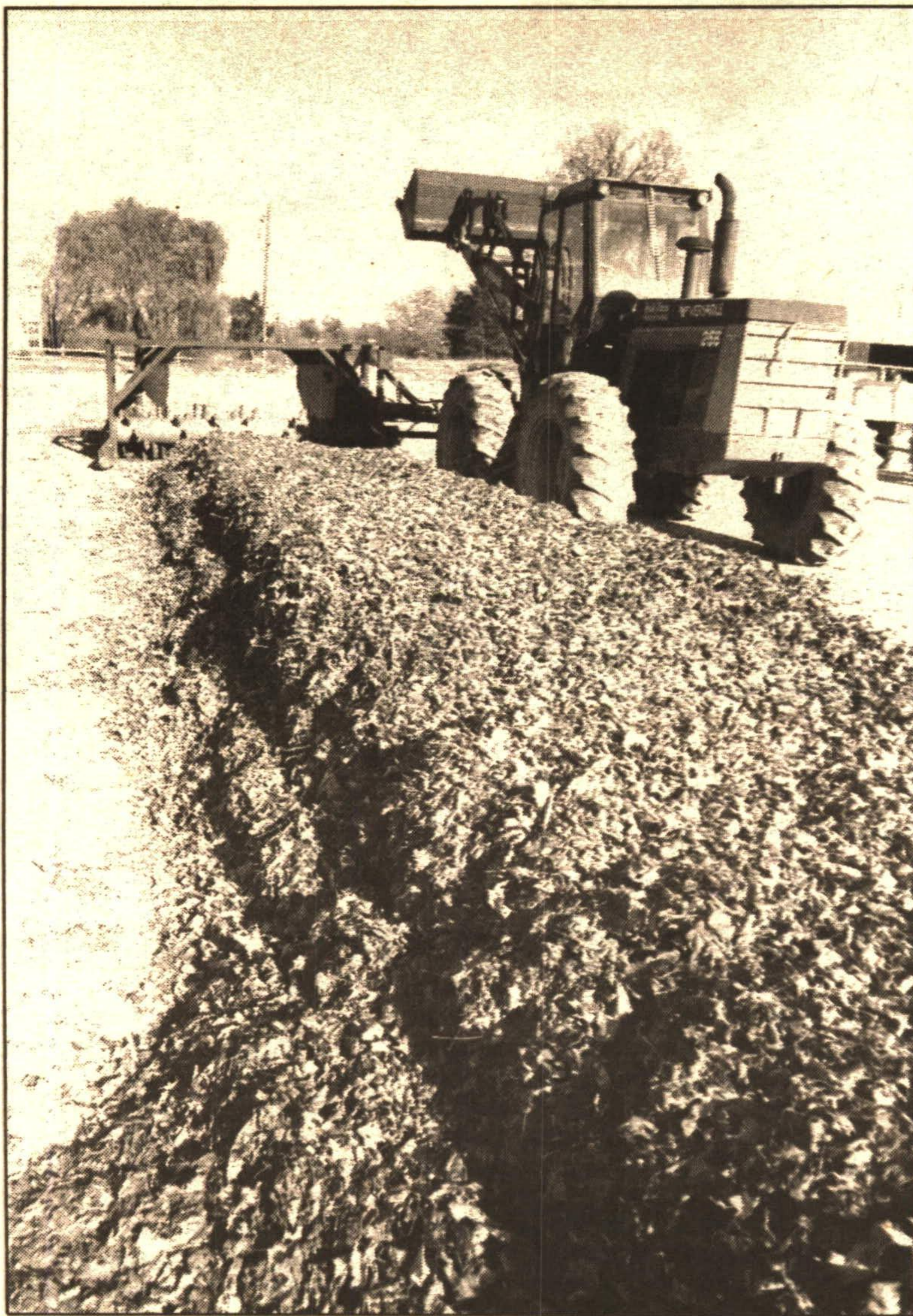
Approximately four acres of Scott's 150-acre farm will be utilized as a compost site. Scott received final approvals from the Ministry of Environment (MOE) two weeks ago, and is currently engineering the site to make it operational.

Although Halton Hills will be collecting urban yard waste this Monday during its special curbside pickup, the Region is planning on placing "green bins" at each of its transfer stations, including Georgetown's Leferink site. Residents will be encouraged to take their yard waste to the stations, which will be transported to Scott's for composting.

Scott notes that he must collect at least 2,000 tonnes per year in order to support the costs of his operation. He plans to use the compost product on his farm, and any surplus will be sold in bulk to other farm operations, he added.

Scott's licence from the MOE allows 100 tonnes per day. He expects his operation to be open 12 months of the year.

"I'll probably have more customers willing to buy the compost



**Jim Scott of Milton's Scott Farm demonstrates how he will turn heaps of leaves and assorted yard waste at his new composting site. The operation is the first commercial composting business in Halton Region, which recently received Provincial approval. Halton Hills will be shipping its natural yard waste to the site beginning this Monday.**

STUART JOHNSTON WeekEnd

than bring materials in," Scott said in an interview Wednesday. "We are able to compost leaves, apple

pulp, green waste, grass clippings and assorted yard waste. All we're doing is monitoring nature."

## \$3.5 million for Manor redevelopment

The Ontario government announced it will give \$3.5 million to help redevelop Halton Centennial Manor, a home for the aged in Milton.

The money will go toward an estimated \$20 million redevelopment into a 200-bed facility. The \$3.5 million is in addition to the original \$6.5 million announced by the ministry last year.

Zanana Akande, Ontario's Minister of Community and Social Services said, "The new facility will provide a much better and more private home-like environment for its elderly residents. And, through services which are planned as part of the redevelopment, seniors who live at home in the community will benefit as well."

Akande said the ministry capital represents 50 per cent of the estimated development costs, with

the municipality responsible for the remainder. The municipality plans to replace both Pettit and Martin Houses with a modern building more suited to the changing needs of the elderly.

New construction on the site of the existing Halton Centennial Manor building is the first of three phases of a plan to develop long-term care services throughout Halton for seniors.

## News in brief

### Christmas Seal campaign launched

Halton Region Lung Association's annual Christmas Seal Campaign represents the gift of life to the over five million Canadians who suffer from respiratory disease. Christmas Seals were first used in Canada to help fight the spread of tuberculosis. With this disease under control, The Lung Association is now dedicated to preventing diseases such as lung cancer, asthma, emphysema and other lung diseases which affect so many Canadian children and adults.

"Our goal for the 1990 campaign is \$170,000," said Dr. Roger Haddon, president of the Lung Association - Halton Region. "The Lung Association wants to remind our generous supporters to send in their contributions which will be used to support medical research and community programs to prevent the spread of lung diseases in Canada," added Dr. Haddon.

"We need the public's support to help us eliminate destructive lung diseases," said Dr. Haddon. "A little Christmas Seal on a card or gift to someone you care about can go a long way to stamp out lung diseases and make millions of Canadians breathe easier," concluded Dr. Haddon.

### Travel computer

Travelling out of the country?

The Halton Regional Health Department now has a computer program which provides information to travellers regarding travel risk, required immunization and pre-travel advice.

This new service is called C.A.T.I.S. - the Computer

Assisted Travel Information System. This is a computer program developed by physicians associated with the Toronto General Hospital's Travel and Inoculation Clinic. This program provides information (to travellers to Asia, Africa, South America, etc.) regarding travel risk, required immunization and pre-travel advice.

If you wish to use this service, phone the local office of the Health Department and request computerized travel information.

### Bookmark Contest

Calling all creative youngsters! Enter the 3rd Annual Halton Hills Public Libraries Bookmark Contest. All designs must be created in black ink on an official entry form available for pick-up at either library. The words "The Library" must appear somewhere on the bookmark. Twelve bookmarks will be chosen. These will be printed and distributed each month during 1991. Entry deadline is 5 pm on November 3, 1990. The winners of the contest will be notified and attend a special presentation on November 8, 1990, during Children's Book Week. For more information please call 873-2681, Georgetown or 853-0301, Acton Library

### Guys and Dolls

Guys and Dolls will be staged at the John Elliot Theatre in Georgetown beginning Nov. 15 for 12 performances. Tickets are on sale at Royal Lepage Real Estate on Guelph St. for \$11 each. The Gala performance Nov. 15 will benefit the North Halton Association for the Developmentally Handicapped. Coffee and dessert will be served in the gallery after the show, but tickets for this show are going fast. As indication of support to NHADH, purchase tickets for the Gala through Anne Sidebottom, 877-5557.

### LEN TUITMAN AND STAFF PRESENT GREEN THUMB GARDENING

#### Your plants need a winter coat too!

Most plants can successfully survive cold winter temperatures but its other effects (snow load, ice, drying winds and hungry rodents) can seriously damage them. A few precautionary measures taken at this time of the year can reduce winter's damage. The following is a list of effective, easy-to-use products that will protect your investment for the winter.

**Rose collar:** This is a resealable plastic product that quickly snaps into a tube to place around the base of rose bushes. When filled with a loose, dry material such as soil, manure, etc. the graft union of the rose is insulated for the winter.

**Tree Wrap:** This is a roll of narrow, slightly wrinkled paper. It is for use in Maple, Fruit Trees and other trees that are prone to bark splitting. When wrapped around the trunk of the tree it reduces the rapid expansion and contraction of tissues that lead to the splitting.

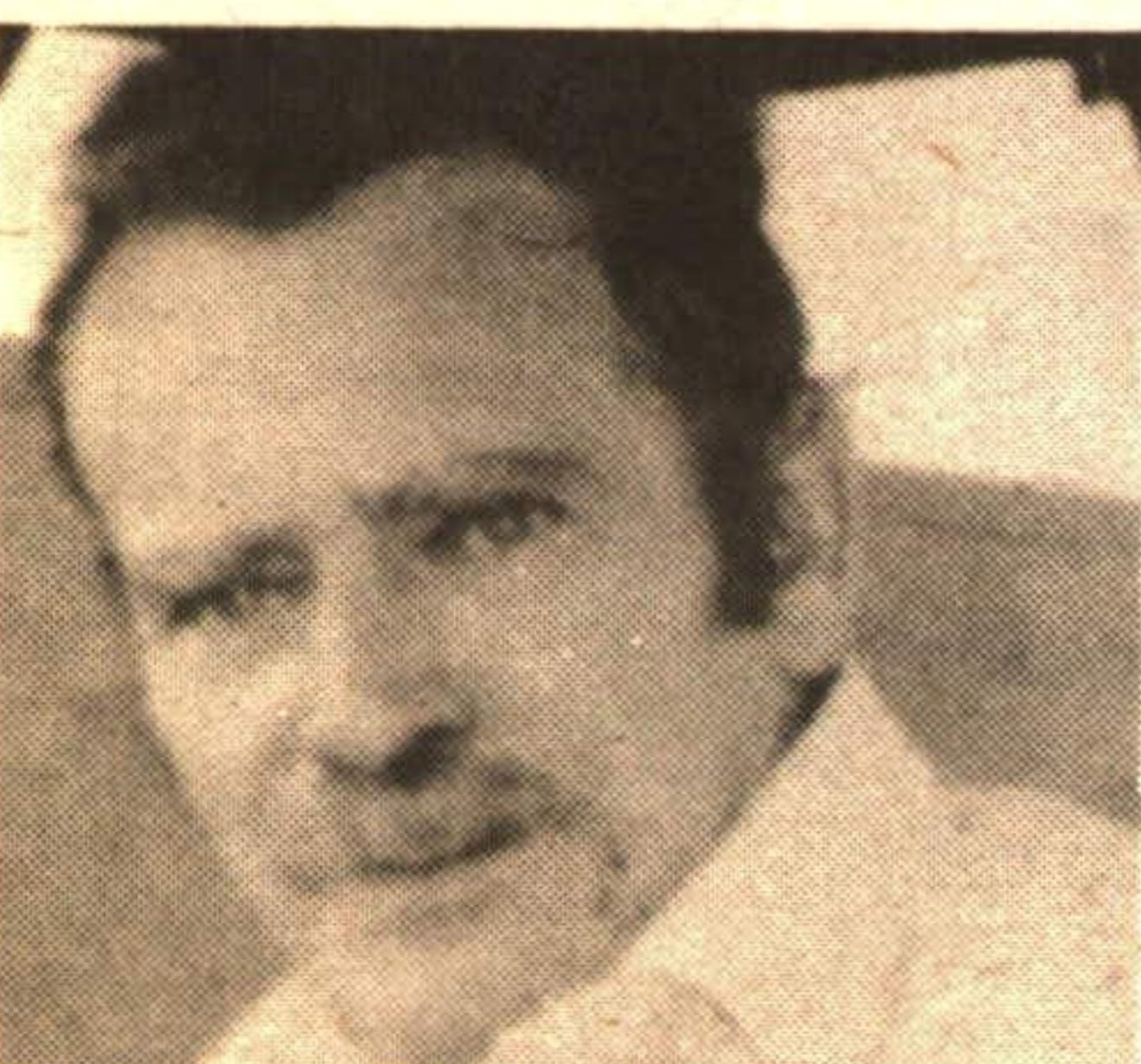
**Winter Wrap:** This is a reusable large mesh tube that prevents upright junipers and evergreen boughs from bending out of shape with heavy snow and ice loads. Burlap can accomplish the same task, but winter wrap is clear and therefore invisible.

**Spiral Tree Guard:** These flexible guards are appropriate for small deciduous trees (shade, ornamental and fruit trees). They protect and prevent rodents and animals from eating the bark.

**Rabbit Repel:** This is a clear liquid that is painted on the trunk of trees to discourage rodents and animals from eating the bark. It is more flexible than tree guards as it can be applied higher on the trunk. This is important in areas where the snow drifts because the animals can reach higher regions in the tree by standing on the drifted snow.

Each week Christine Cole of Tuitman's Garden Centre and Landscaping, Highway 25, 1 mile south of Acton, 853-2480, will be presenting helpful tips and information to assist you in creating your garden showplace!

## Isn't It Nifty Look Who's Fifty



**Love Jenny,**  
(Wendy, Cindy, Mandy & Tammy)

WE CATER ANYTIME—ANYWHERE

## The Kentners

Social Catering Ltd.

62 MILL STREET GEORGETOWN

873-0404 L7G 3H6 846-6639  
GEORGETOWN MISSISSAUGA

• RECEPTION HALLS • DISC JOCKEY • WEDDING CAKES • DECORATIONS  
• PARTY RENTALS • BARMEN • WAITRESSES • FLOWERS • INVITATIONS

SERVING HALTON & PEEL REGIONS FOR OVER 10 YEARS

### CHRISTMAS PARTIES

Office or Home

The Kentners have a wide variety of buffets and party trays to suit your needs.

Call today for our Free Brochure!

OFFICE PARTIES

HOUSE PARTIES

DANCES

COMPLETE BAR SERVICE

FULL STAFF AVAILABLE

HALL RENTALS

PARTY RENTALS

DELIVERY

### CHRISTMAS FAVORITES

CHRISTMAS CHEESE TRAYS

Each Christmas Cheese Tray is centered with Mrs. Claus' fruit and nut cheese ball. Our elves select from Cheddar, Colby, Brick, Swiss, Camembert, Havarti, Gouda and Marble. Each tray is complemented with a variety of biscuits and of course fresh fruits and a garnish of seasonal chocolates.

(serves 15-20) (serves 20-30) (serves 30-50)

\$35.00 \$52.00 \$86.50

FROSTED LIVER PATE

Try our frosted pate to add a festive touch to your holiday table. Accompanied by our homemade garlic toast, our holiday frosting makes this a sure hit. (serves approx. 25) \$34.50

TOASTED BRIE PINWHEEL

Smooth melted brie encrusted in toasted almonds, ready to enjoy with crusty baguettes, red and green grapes and our cranberry liqueur sauce. Just pop it in the oven and enjoy. A sure conversation stopper! (serves 20-40) \$47.50

CREAMY CRAB SURPRISE

A 3 tiered creation of cream cheese, chunky crab meat and spicy seafood sauce. Ready for spreading on an assortment of biscuits. Seafood lovers enjoy. (serves 15-40) \$49.50

### FESTIVE TREATS

SEASONAL FINGER DESSERTS  
Selected at random we present Christmas cake, mince tarts, cranberry streusel tarts, short breads, rum balls, mini fruitcake, Christmas cookies, nanaimo bars, assorted squares, coconut balls and many more.

\$11.00 Doz.

CHRISTMAS COOKIE TRAY

A colorful assortment of traditional Christmas cookies and short breads. (48 pieces) \$20.00

HOMEMADE CHRISTMAS CAKE

Our homemade well aged fruitcake topped with marzipan. \$10.00/lb.

### GIFT BASKETS

"A CHRISTMAS TRADITION"  
Each Kentner Gift Basket is unique. Our staff has shopped the world markets for these special treats. We select an assortment of goodies from the following categories:

•Sweet	•Savory	•Cheese
6 items	- \$17.95 ea	
9 items	- \$25.00 ea	
14 items	- \$40.00 ea	

\*seasonal wrap \*gift card \*wicker basket

### FESTIVE FRIDAYS

• HALL  
• DISC JOCKEY  
• DINNER  
• DECORATIONS  
• CASH BAR

**\$20**  
+TAX  
PER PERSON (MIN. 75)  
Some November dates available